



CHASE COMMERCE PARK | SPACE AVAILABLE FOR LEASE

3821 & 3829 Lorna Road | Hoover, AL | 35244

LEASE RATE: \$14.50/SF • NET OF ELECTRIC & JANITORIAL

AVAILABLE SPACE

SUITE	AVAILABLE SPACE
320	3,125 SF

DETAILS

- Ample parking available
- Building located in close proximity to the Riverchase Galleria and has easy access to shopping, hotels, banks, restaurants, and residential
- Easy access to I-459, U.S. Highway 31 and I-65
- Located in city of Hoover, no city occupational tax



EXCLUSIVELY OFFERED BY

MATT GILCHRIST

mattg@grahamcompany.com

SAM CARROLL, SIOR

samc@grahamcompany.com

205•871•7100 | GrahamCompany.com

Information deemed reliable but not guaranteed



Graham & Co

PHOTOGRAPH

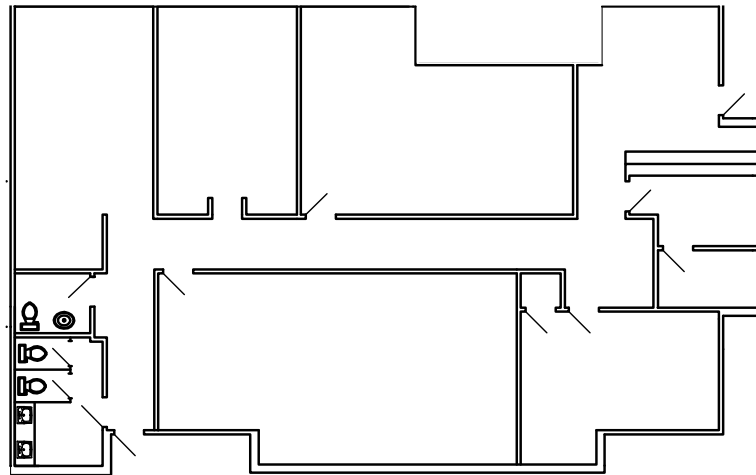


CHASE COMMERCE PARK | SPACE AVAILABLE FOR LEASE

3821 & 3829 Lorna Road | Hoover, AL | 35244

LEASE RATE: \$14.50/SF • NET OF ELECTRIC & JANITORIAL

SUITE 320



FLOOR PLANS NOT TO SCALE

EXCLUSIVELY OFFERED BY

MATT GILCHRIST

mattg@grahamcompany.com

SAM CARROLL, SIOR

samc@grahamcompany.com

205•871•7100 | GrahamCompany.com

Information deemed reliable but not guaranteed



Graham & Co