



INVESTMENT OFFERING | FOR SALE

2111 Parkway Office Circle | Birmingham, AL | 35244 **SALE PRICE: \$2,750,000**

TOTAL BUILDING: ±34,241 SF

DETAILS

- 100% Occupied
- Parking Ratio: 4.0 / 1,000 SF
- Excellent access to I-65, Valleydale Road, and Highway 31

TENANTS INCLUDE

- HP Hotels
- Rausch Coleman Homes
- Berney Office Solutions
- Bridgewell Resources
- Pinnacle Engineering
- Garver



EXCLUSIVELY OFFERED BY

SAM CARROLL, SIOR

samc@grahamcompany.com

205•871•7100 | GrahamCompany.com

Information deemed reliable but not guaranteed



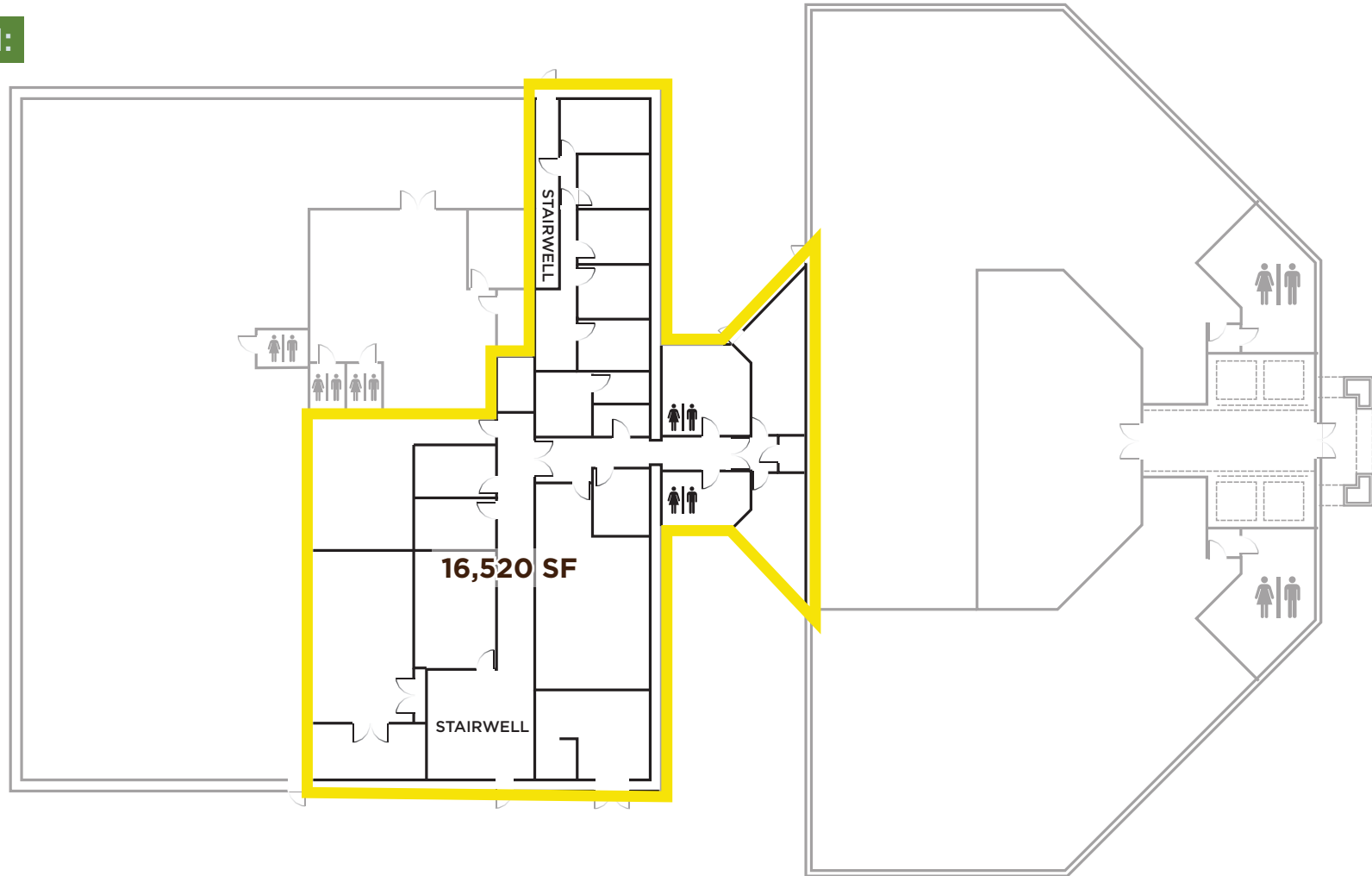
Graham & Co

ENTREPRENEUR

 **INVESTMENT OFFERING** | FOR SALE

2111 Parkway Office Circle | Birmingham, AL | 35244 **SALE PRICE: \$2,750,000**

FLOOR PLAN:



EXCLUSIVELY OFFERED BY

SAM CARROLL, SIOR

samc@grahamcompany.com

205•871•7100 | GrahamCompany.com

Information deemed reliable but not guaranteed



Graham & Co