

FOR LEASE PRIME HWY-9 RETAIL



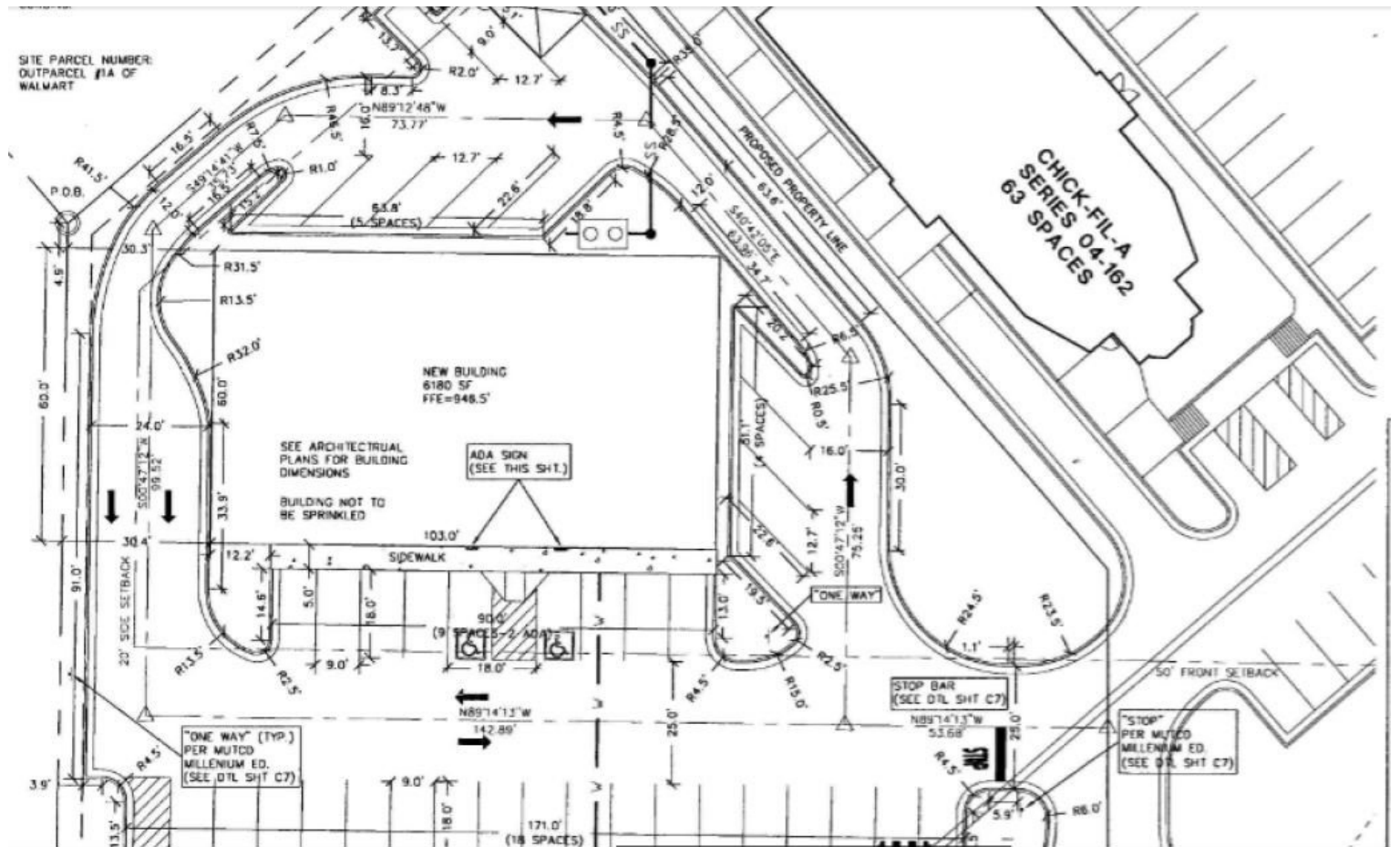
3906 SC-9, Boiling Springs, SC 29316

Prime retail center has an opportunity for 1,200 - 3,600 SF for lease. This is an outparcel to Walmart Supercenter and shares ingress/egress with Chick-fil-A on Hwy. 9 and Rainbow Lake Rd. at a lighted intersection.

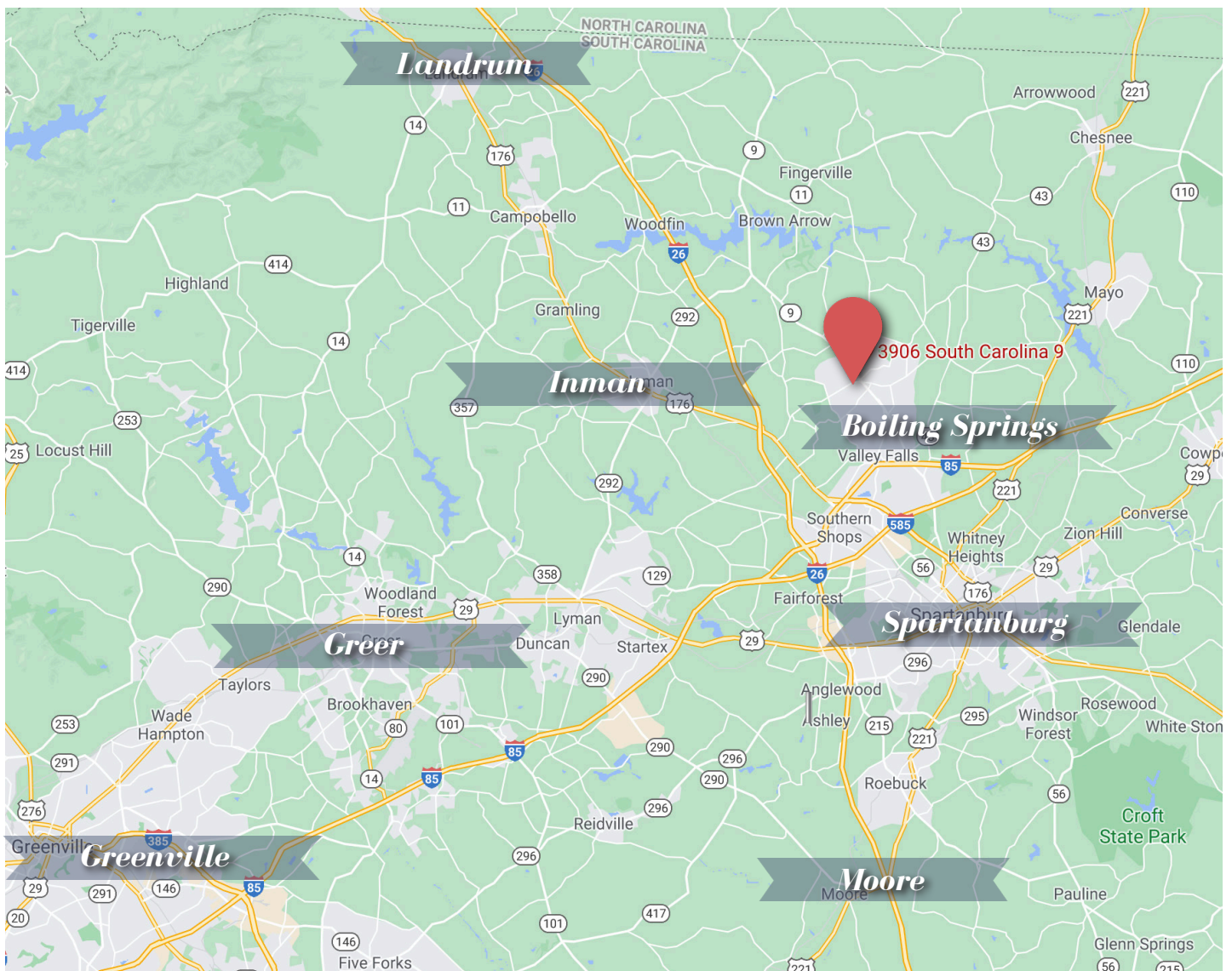
A range of divisible square footage exists between 1,200 - 3,600 SF.

In addition to Lowe's Home Improvement as a traffic generator on Rainbow Lake Rd., new retail immediately across the street includes Starbucks, Marco's Pizza, Aldi and a new 23,000 SF medical facility almost completed with construction.

- **Price:** \$24 PSF NNN
- **Space:** 1,200 - 3,600 SF
- **Property Type:** Restaurant, Street Retail
- **Tax ID:** 2-37-00-027.07
- **County:** Spartanburg







BRIAN AIKEN, CCIM

Senior Broker

+1 843 744 9877 (O)

+1 843 478 8800 (D)

baiken@cbsatlantic.com



ATLANTIC

The information contained herein should be considered confidential and remains the sole property of Coldwell Banker Commercial Atlantic at all times. Although every effort has been made to ensure accuracy, no liability will be accepted for any errors or omissions. Disclosure of any information contained herein is prohibited except with the express written permission of Coldwell Banker Commercial Atlantic.