

# FOR SALE VACANT LAND



*1108 Graddick Road | Mount Pleasant, SC 29464*

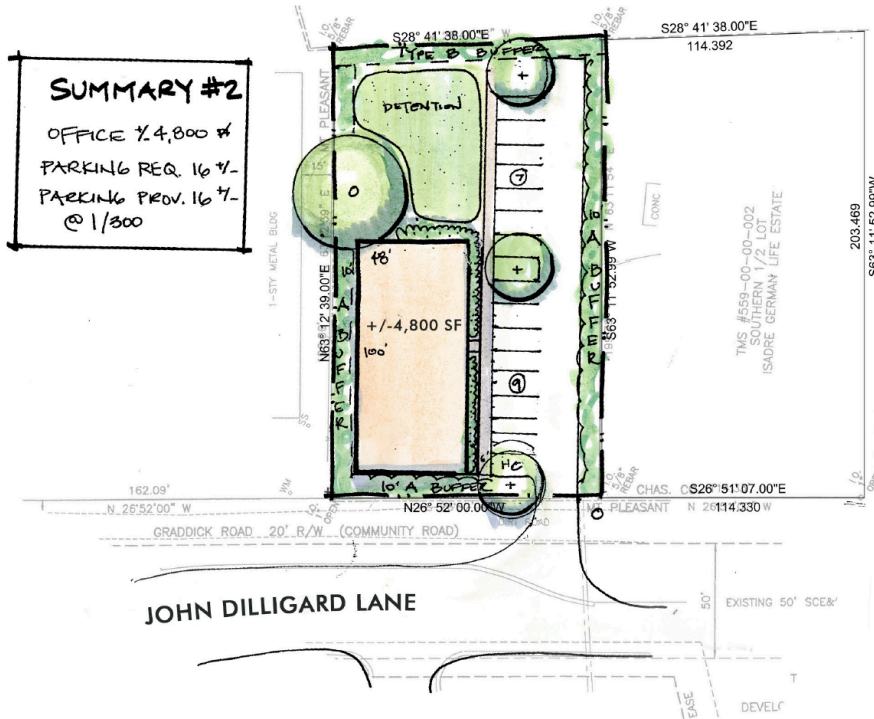
LOCATION, LOCATION, LOCATION! This tract is one of the few infill tracts available in the booming, Mt Pleasant Mid-Town Corridor. Just off of Hwy 17, adjacent to the Wando Crossing Shopping Center, Trident Technical College, I-526 and Hungryneck Blvd, this property is conveniently located in the center of Mt Pleasant. The site was annexed into Mt Pleasant in 2018 and rezoned to Area Wide Business, which allows a variety of commercial uses. There is a contiguous tract also for sale separately that could be assembled for future development. The sellers have provided a rendering of an office concept reflecting a 4800 sf office development. The owners will also consider Build to Suit options for qualified Tenants.

**COLDWELL  
BANKER  
COMMERCIAL  
ATLANTIC**

COLDWELL BANKER COMMERCIAL ATLANTIC | +1 843 744 9877 | CBCATLANTIC.COM  
3506 WEST MONTAGUE AVENUE, SUITE 200 | NORTH CHARLESTON, SC 29418



## PROPERTY DETAILS

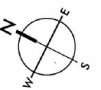


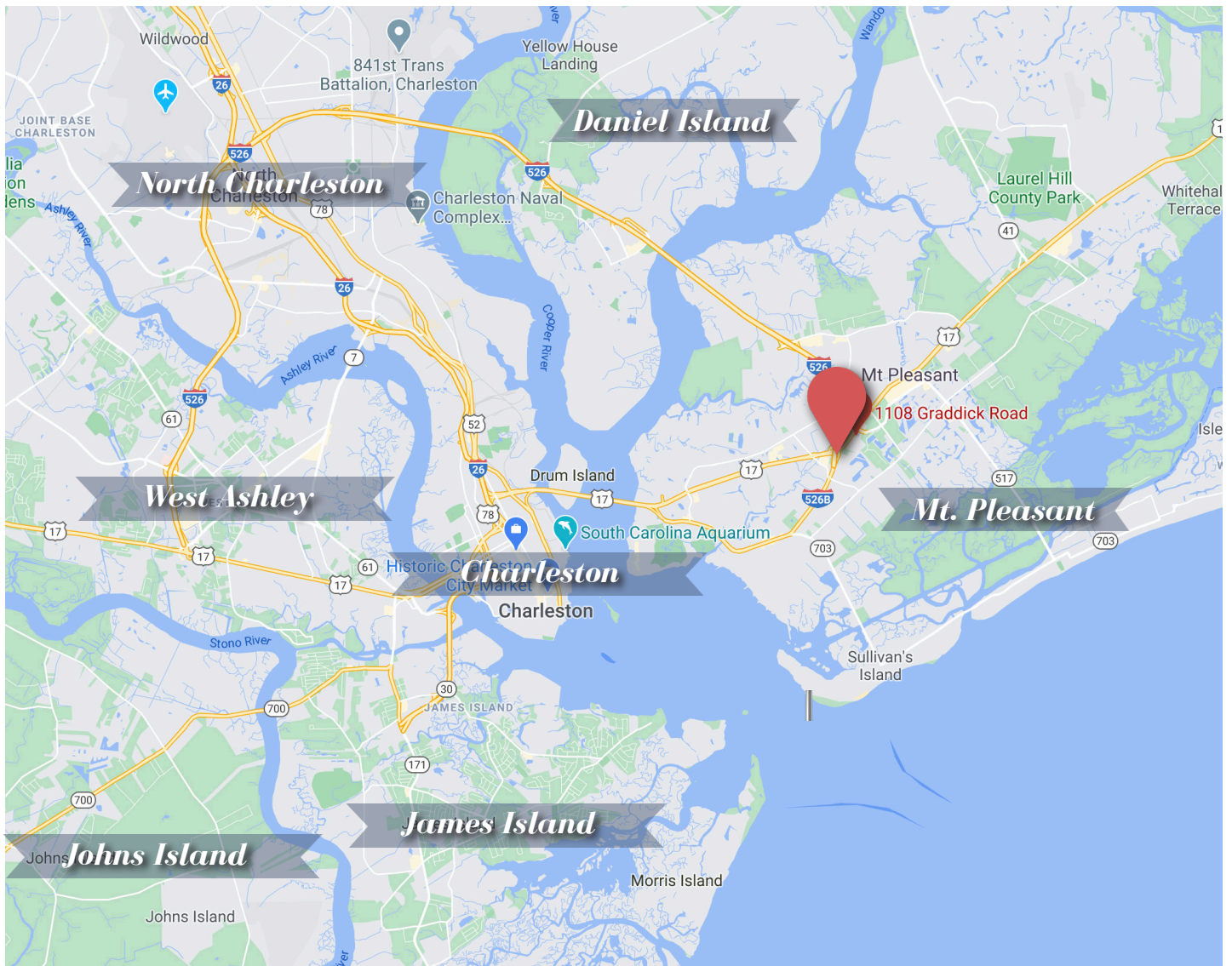
- **Price:** \$550,000
- **Land Area:** 0.53 AC
- **Property Type:** Hospitality, Retail, Retail-Pad
- **Tax ID:** 5590000176
- **County:** Charleston



PROJECT NAME JOHN DILLIGARD LANE  
 PROJECT # 8155  
 DATE: 4.4.19  
 SCALE: 1" = 40'-0"

CONCEPT PLAN





**TREY ZIMMERMAN**

*Senior Broker*

+1 843 744 9877 (O)

+1 843 224 8121 (D)

[tzimmerman@cbcatlantic.com](mailto:tzimmerman@cbcatlantic.com)



**ATLANTIC**

The information contained herein should be considered confidential and remains the sole property of Coldwell Banker Commercial Atlantic at all times. Although every effort has been made to ensure accuracy, no liability will be accepted for any errors or omissions. Disclosure of any information contained herein is prohibited except with the express written permission of Coldwell Banker Commercial Atlantic.