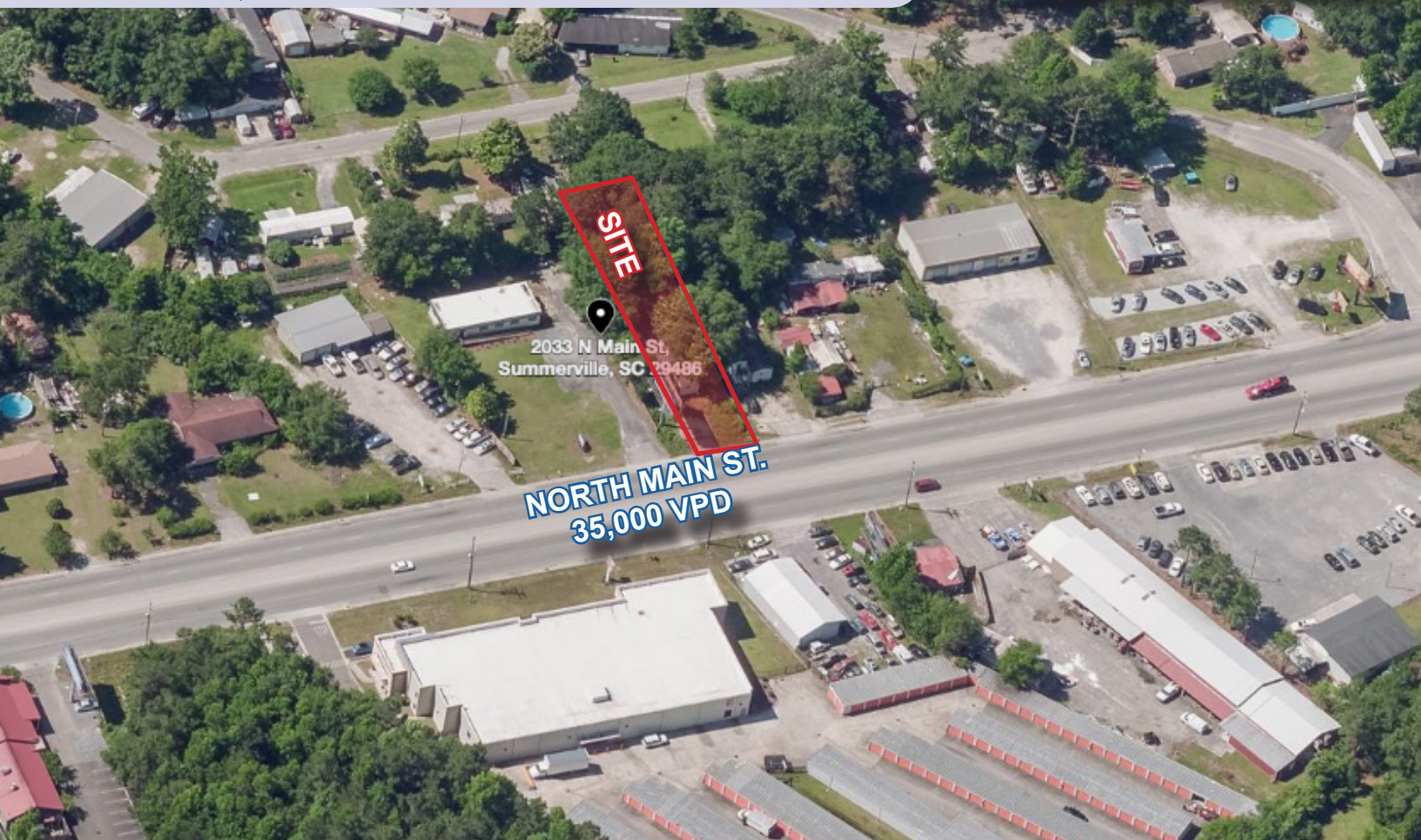


VACANT LAND

2033 N MAIN STREET
SUMMERVILLE, SC 29483

FOR SALE



PROPERTY OVERVIEW

Yes it's a small lot, but can be combined with 2039 N Main St - 0.57 ac (1,755 sf building) and another 0.22 acre 2029 N Main for a total of 1.01 acre. Over 209 ft +/- of frontage with all three lots! Desirable location midway between 126/ Nexton and 176 Carnes Crossroad and the new St Francis Hospital. Billboard does not convey with the property. Owner will create an easement for Billboard sign.

FOR MORE DETAILS CONTACT:

Marlena Franklin | mfranklin@cbcatlantic.com
Coldwell Banker Commercial Atlantic

KEY FEATURES

SALE PRICE:	\$90,000
ACREAGE:	0.22 AC
PROPERTY TYPE:	Office/Retail
ZONING:	General Commercial
FRONTAGE:	52 FT
COUNTY:	Dorchester
TAX MAP:	222-14-04-041
MLS #:	30337490

Main 843-744-9877
Cell 843-834-9151

3506 W Montague Ave Ste 200
North Charleston, SC 29418

CBCAtlantic.com

Coldwell Banker Commercial and the Coldwell Banker Commercial Logo are registered service marks licensed to Coldwell Banker Real Estate LLC. Each Office is Independently Owned and Operated.

VACANT LAND

2033 N MAIN STREET
SUMMERVILLE, SC 29483

FOR SALE



FOR MORE DETAILS CONTACT:

Marlena Franklin | mfranklin@cbsatlantic.com
Coldwell Banker Commercial Atlantic

Main 843-744-9877
Cell 843-834-9151

3506 W Montague Ave Ste 200
North Charleston, SC 29418

CBCAtlantic.com

Coldwell Banker Commercial and the Coldwell Banker Commercial Logo are registered service marks licensed to Coldwell Banker Real Estate LLC. Each Office is Independently Owned and Operated.

VACANT LAND

2033 N MAIN STREET
SUMMERVILLE, SC 29483

FOR SALE



FOR MORE DETAILS CONTACT:

Marlena Franklin | mfranklin@cbsatlantic.com
Coldwell Banker Commercial Atlantic

Main 843-744-9877
Cell 843-834-9151

3506 W Montague Ave Ste 200
North Charleston, SC 29418

CBCAtlantic.com

Coldwell Banker Commercial and the Coldwell Banker Commercial Logo are registered service marks licensed to Coldwell Banker Real Estate LLC. Each Office is Independently Owned and Operated.