

FOR LEASE

MEDICAL OFFICE IN SUMMERVILLE



85 Springview Lane | Summerville, SC 29485

Property Description

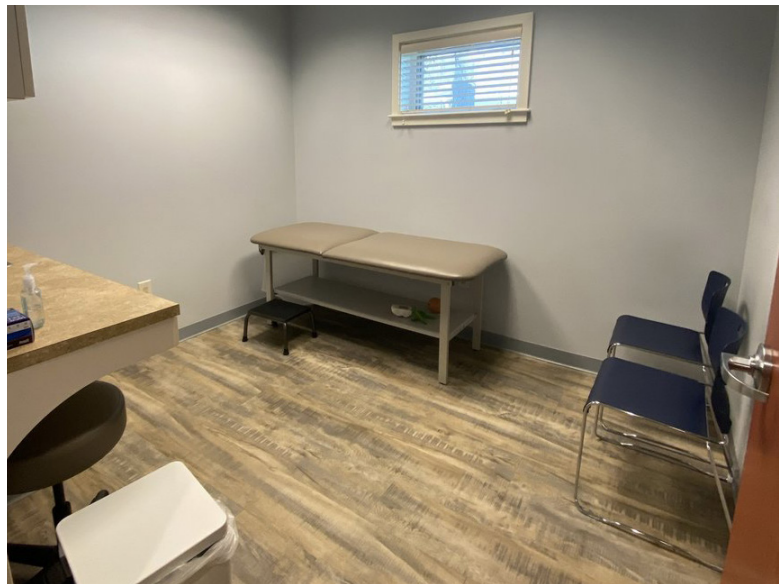
The professional office suites at the Springview Medical Office Building offers leasing to variety of specialty practices within the Healthcare Industry. Current tenants include: The Medical University of South Carolina's Dermatology Practice and Summerville Surgical Associates. Located next to MUSC's Primary Care Practice and within a very short distance to the Summerville Hospital and Medical Campus at the end of the street, this Class A space offers tenants an unique opportunity to participate in the synergy of this large medical complex providing services to the northern region of the Tri-County area. Please, see the brochure included in additional documents. Lease offering is based on NNN terms.

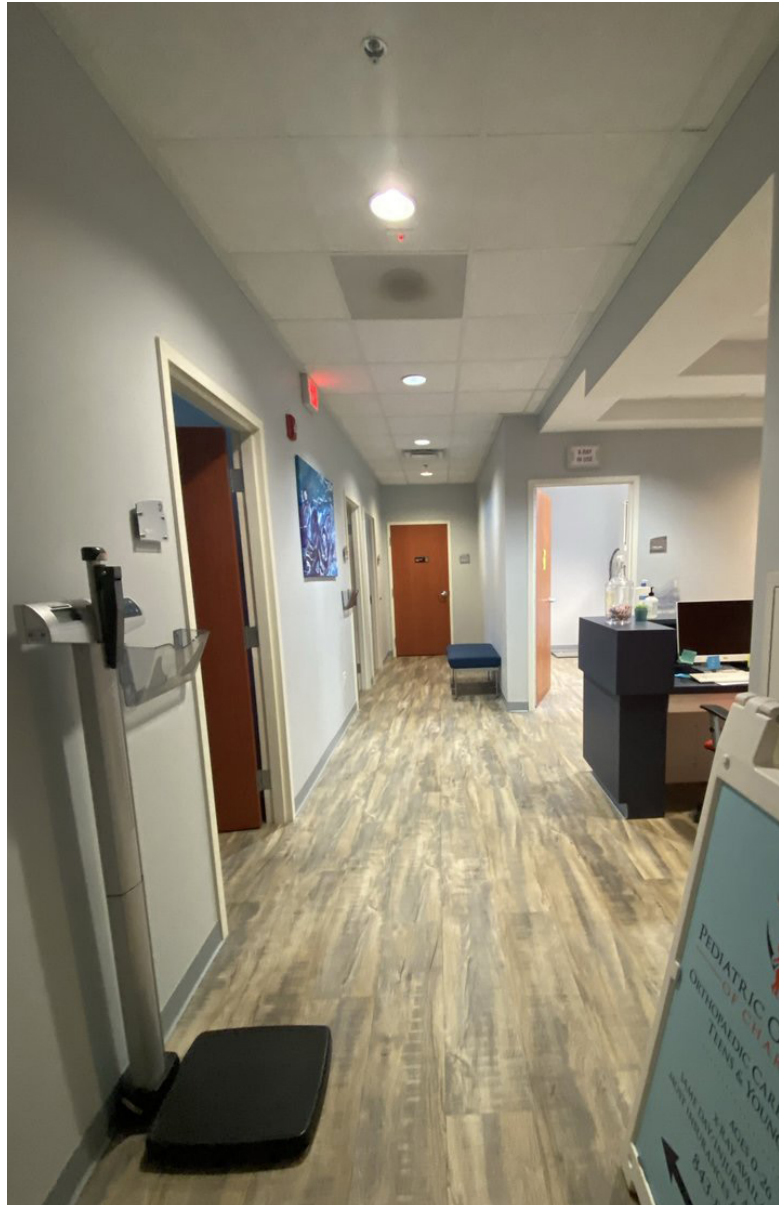
Property Details

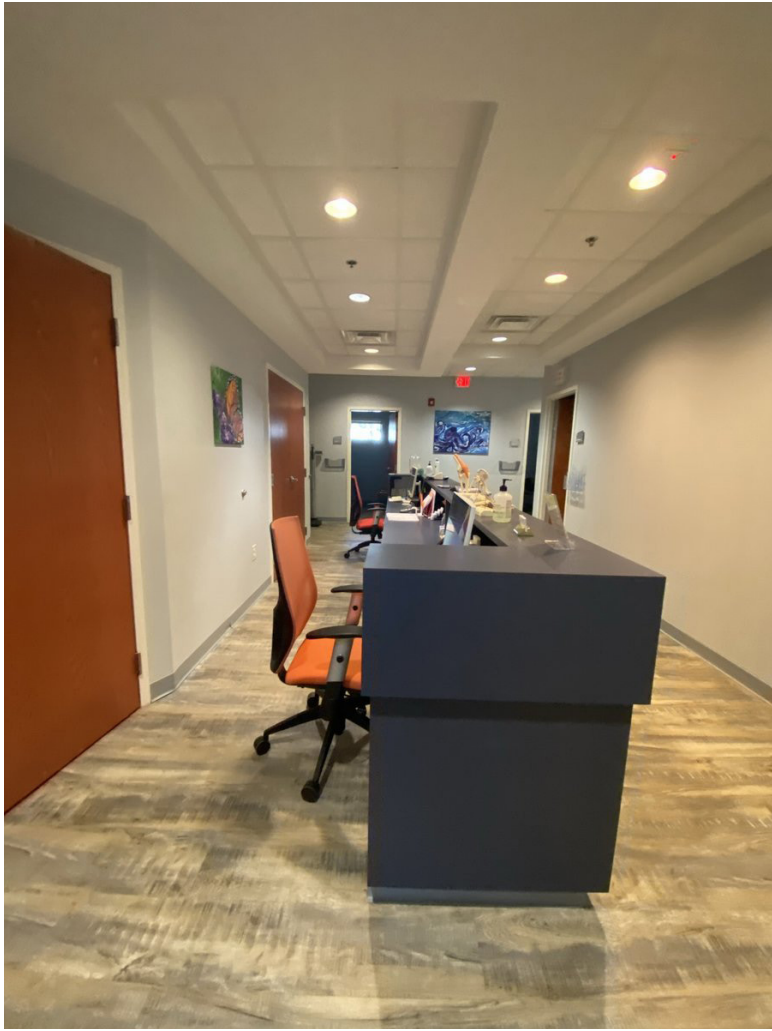
FOR LEASE:	\$16 PSF
AVAILABLE SF:	2,423 SF
GROSS BUILDING:	7,158 SF
PROPERTY USE:	Medical, Office
TRAFFIC COUNT:	31,000 VPD
COUNTY:	Dorchester



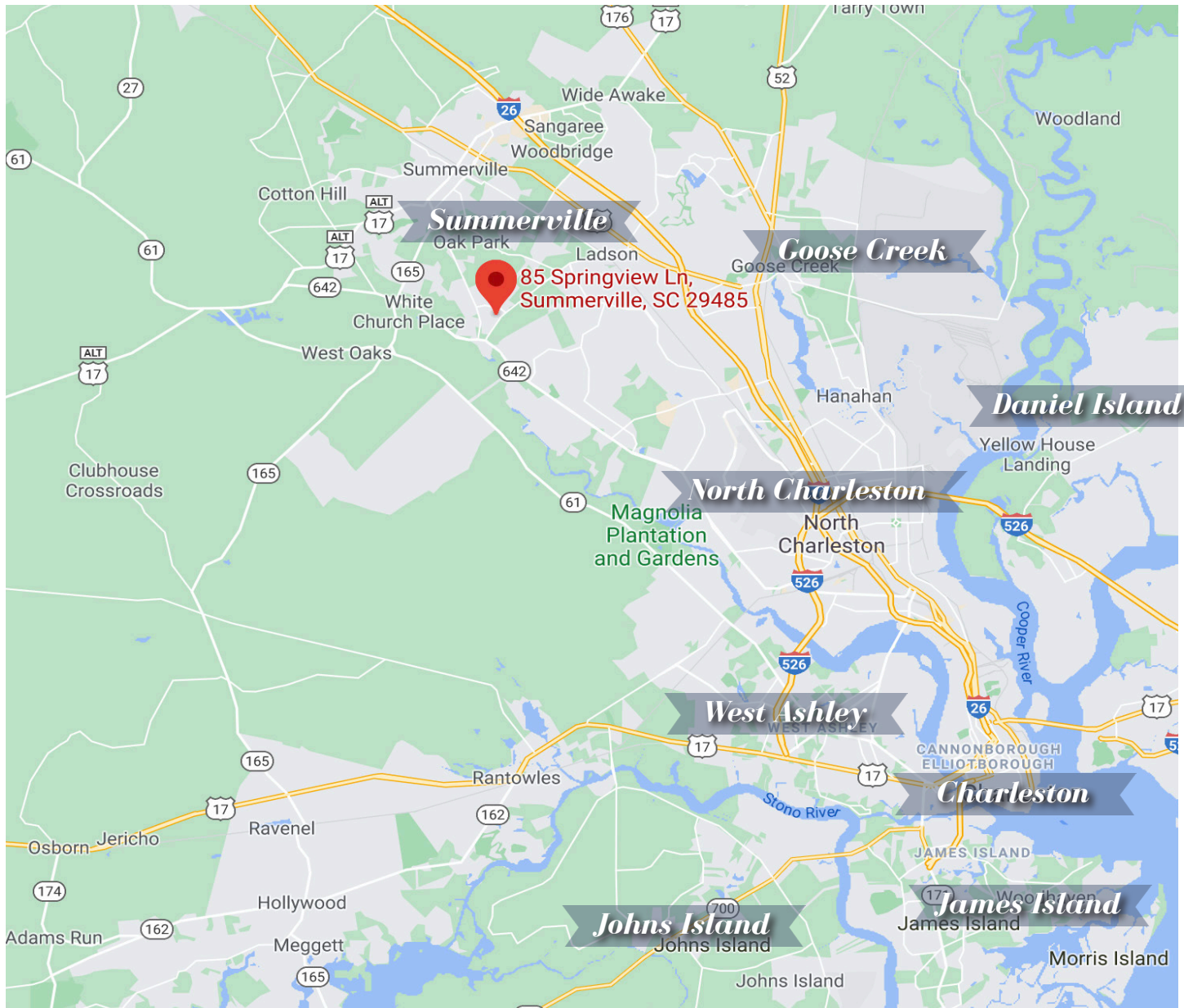












KIP BOWMAN

Broker

843-744-9877 (O)

843-437-0074 (D)

SARA BODELL

Agent

843-744-9877 (O)

864-903-2731 (D)



ATLANTIC

kbowman@cbsatlantic.com

sbodell@cbsatlantic.com

The information contained herein should be considered confidential and remains the sole property of Coldwell Banker Commercial Atlantic at all times. Although every effort has been made to ensure accuracy, no liability will be accepted for any errors or omissions. Disclosure of any information contained herein is prohibited except with the express written permission of Coldwell Banker Commercial Atlantic.