

**LAND FOR SALE**



## ASSISTED LIVING PARCEL IN WEST ASHLEY

0 BEAR SWAMP ROAD | WEST ASHLEY, SC 29455



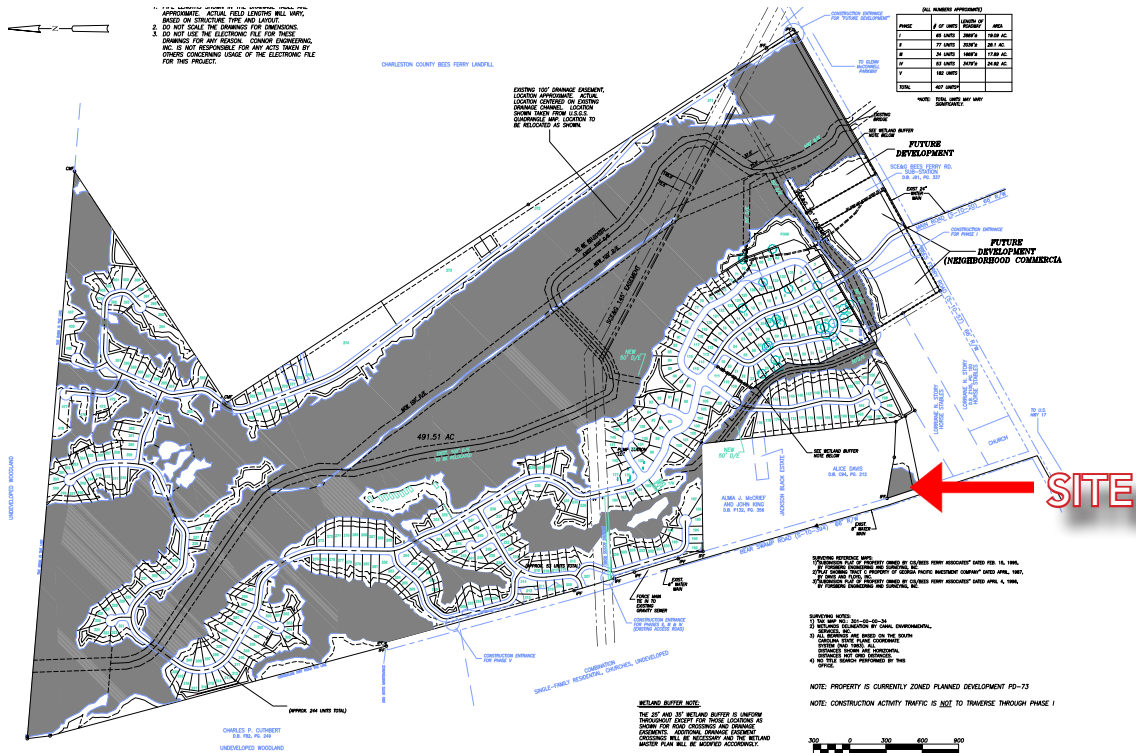
# ATLANTIC

COLDWELL BANKER COMMERCIAL ATLANTIC  
3506 WEST MONTAGUE AVENUE, SUITE 200 NORTH CHARLESTON, SC 29418  
CBCATLANTIC.COM

# ASSISTED LIVING PARCEL IN WEST ASHLEY

0 BEAR SWAMP ROAD | WEST ASHLEY, SC 29455

## PROPERTY OVERVIEW



## OFFERING SUMMARY

**FOR SALE:** \$300,000  
**LOT SIZE:** 2.3 AC

## PROPERTY HIGHLIGHTS

**PROPERTY SUBTYPE:** Assisted Living  
**ZONING:** PD  
**TAX ID:** 286-00-00-043  
**COUNTY:** Charleston

## PROPERTY OVERVIEW

This 2.3 acre parcel is located near the intersection of Bees Ferry Rd and Savannah Highway in West Ashley. The site is part of the Planned Development for Hunt Club which has multi-family access just north of this location along Bear Swamp Rd. Approval is for an Assisted Living facility. Proposed and ongoing development projects in the area include: Sabal Homes along Bees Ferry extension; 8 acres of retail along Savannah Highway at the intersection of Bees Ferry Rd; a large scale multi-family development along Savannah Highway between Bees Ferry and Publix; and Long Savannah, a 3300 ac planned community with proposed access along Bear Swamp Rd.

**DIRECTIONS:** Savannah Highway to a right turn onto Bees Ferry, then left at Bear Swamp Rd. The site is next to the Units Moving and Portable Storage facility.



# ASSISTED LIVING PARCEL IN WEST ASHLEY

0 BEAR SWAMP ROAD | WEST ASHLEY, SC 29455

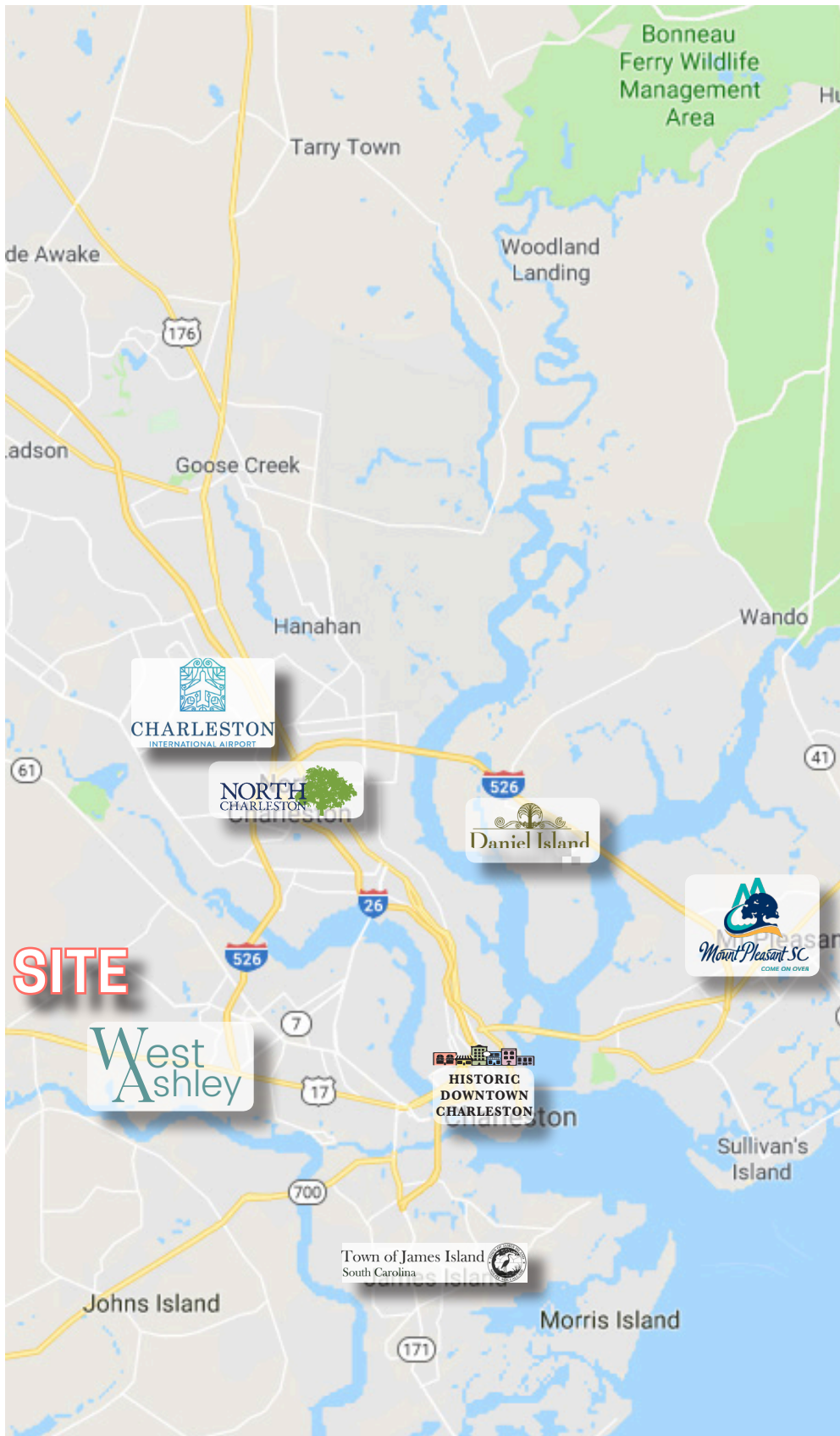
## MAP/DEMOS



DEMOGRAPHICS	3 Mile	5 Mile	10 Mile
POPULATION	10,083	37,169	213,370
HOUSEHOLDS	6,180	20,275	99,216
AVG. HH INCOME	\$87,407	\$84,834	\$70,503

**KIP BOWMAN**  
 843-725-6892 (O) 843-437-0074 (C)  
 kbowman@cbsatlantic.com

**SARA BODELL**  
 843-744-9877 (O) 864-903-27341 (O)  
 sbodell@cbsatlantic.com



**COLDWELL  
BANKER  
COMMERCIAL**

## ATLANTIC

### KIP BOWMAN

Senior Broker

843-725-6892 (O)

843-437-0074 (C)

kbowman@cbsatlantic.com

### SARA BODELL

Sales Associate

843-744-9877 (O)

864-903-2731 (C)

sbodell@cbsatlantic.com

**SITE**

West  
Ashley

### COLDWELL BANKER COMMERCIAL ATLANTIC

3506 WEST MONTAGUE AVENUE, SUITE 200

NORTH CHARLESTON, SC 29418

CBCATLANTIC.COM | 843-744-9877 (O) | 843-744-9879 (F)

The information contained herein should be considered confidential and remains the sole property of Coldwell Banker Commercial Atlantic at all times. Although every effort has been made to ensure accuracy, no liability will be accepted for any errors or omissions. Disclosure of any information contained herein is prohibited except with the express written permission of Coldwell Banker Commercial Atlantic.