



2308 Eubank NE  
Albuquerque, NM 87112

**FOR LEASE**

**Office Suite**



**Available Space:** Suite J      500 RSF      \$420/Mo.

**Lease Type:** Full Service plus Janitorial

**Zoning:** MX-M, Moderate Intensity

- Comments:**
- Excellent Visibility
  - Just North of Menaul Blvd.
  - Plenty of Parking
  - Monument Signage Available on Eubank Blvd.
  - In-Town, Motivated Landlord



The information contained is believed reliable. While we do not doubt the accuracy, we have not verified it and make no guarantee, warranty or representation about it. It is your responsibility to independently confirm its accuracy and completeness. Any projection, opinion, assumption or estimated uses are for example only and do not represent the current or future performance of the property. The value of this transaction to you depends on many factors which should be evaluated by your tax, financial, and legal counsel. You and your counsel should conduct a careful independent investigation of the property to determine that it is suitable to your needs. If square footage is a consideration, all parties are advised to measure the property.

**(505) 268-2800**

**WWW.ROGER-COX.COM**

1717 Louisiana Blvd. NE, Suite 111  
Albuquerque, NM 87110



**ROGER COX**  
AND ASSOCIATES  
PROPERTY MANAGEMENT, LLC

Will Stribling

M (505) 250-6440

stribling@roger-cox.com



2308 Eubank NE  
Albuquerque, NM 87112

FOR LEASE

## Aerial



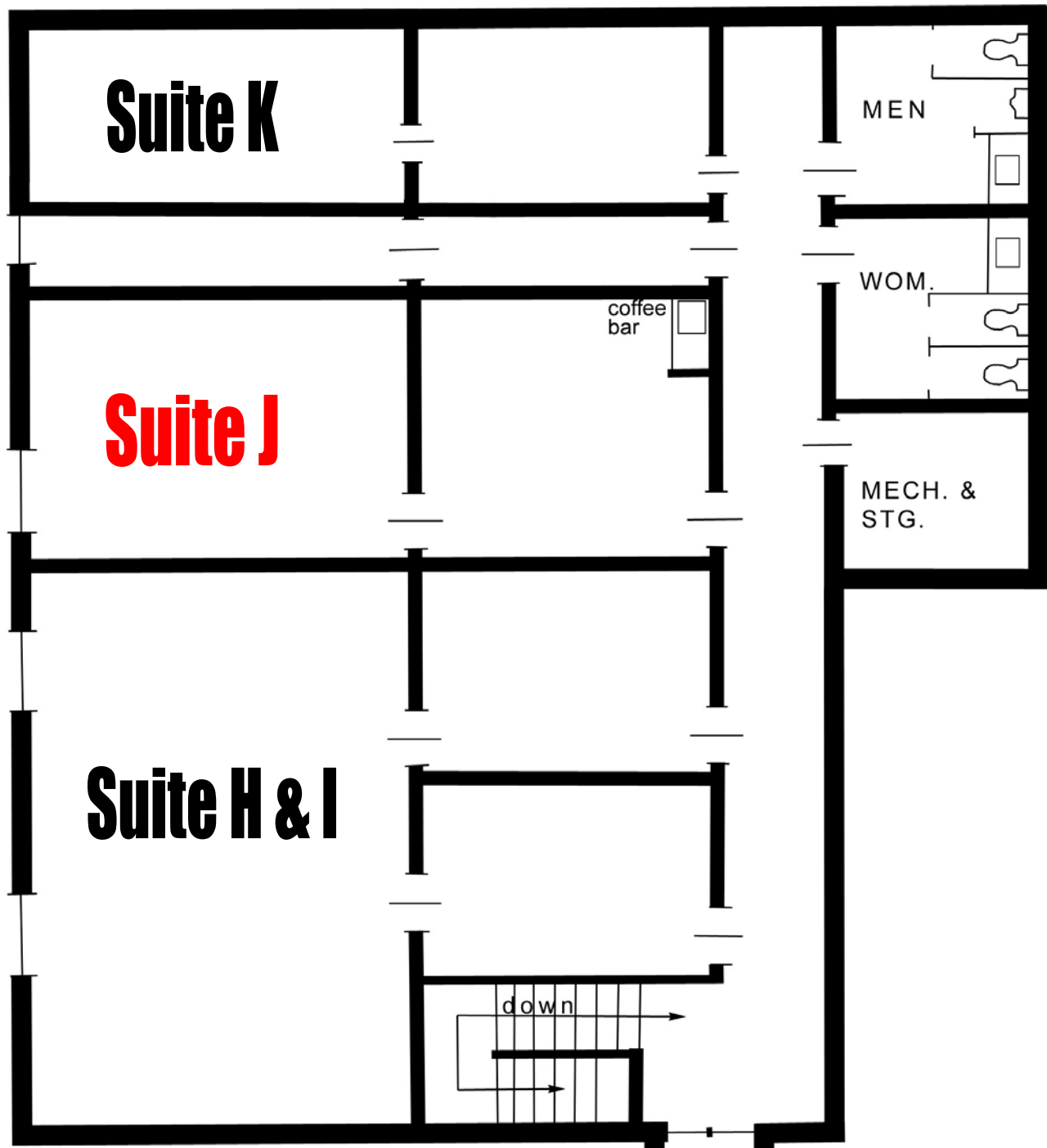
The information contained is believed reliable. While we do not doubt the accuracy, we have not verified it and make no guarantee, warranty or representation about it. It is your responsibility to independently confirm its accuracy and completeness. Any projection, opinion, assumption or estimated uses are for example only and do not represent the current or future performance of the property. The value of this transaction to you depends on many factors which should be evaluated by your tax, financial, and legal counsel. You and your counsel should conduct a careful independent investigation of the property to determine that it is suitable to your needs.



2308 Eubank NE  
Albuquerque, NM 87112

**FOR LEASE**

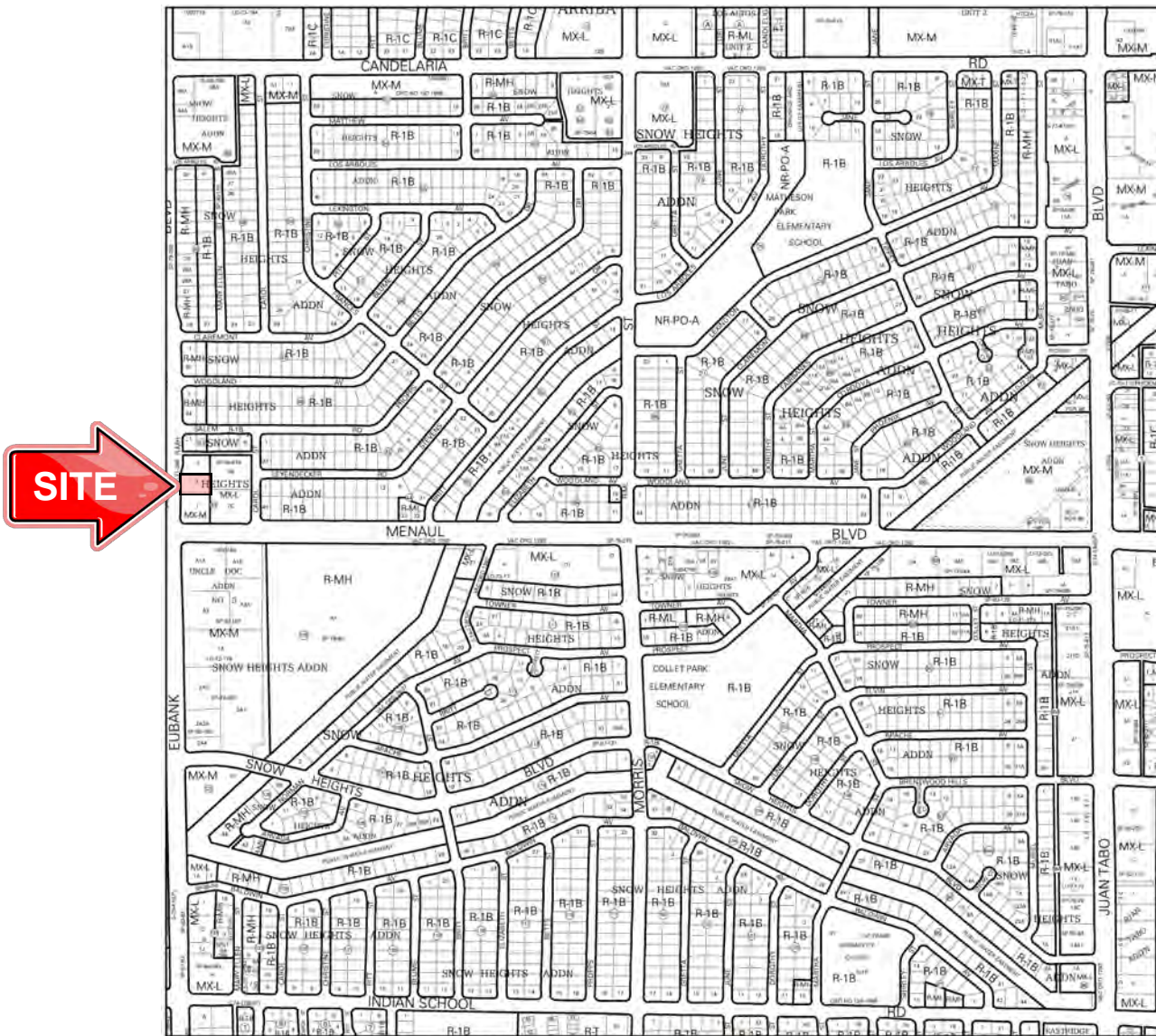
## Floor Plan



2308 Eubank NE  
Albuquerque, NM 87112

FOR LEASE

Zone Atlas Page



For more details about the Integrated Development Ordinance visit: <http://www.cabq.gov/planning/codes-policies-regulations/integrated-development-ordinance>

**IDO Zone Atlas**  
**May 2018**

IDO zoning information as of May 17, 2018  
The Zone Districts and Overlay Zones are established by the Integrated Development Ordinance (IDO).

Zone Atlas Page: **H-21-Z**

- Easement
- Escarpment
- Petroglyph National Monument
- Areas Outside of City Limits
- Airport Protection Overlay (APO) Zone
- Character Protection Overlay (CPO) Zone
- Historic Protection Overlay (HPO) Zone
- View Protection Overlay (VPO) Zone

Gray Shading Represents Area Outside of the City Limits

0 250 500 1,000 Feet

The information contained is believed reliable. While we do not doubt the accuracy, we have not verified it and make no guarantee, warranty or representation about it. It is your responsibility to independently confirm its accuracy and completeness. Any projection, opinion, assumption or estimated uses are for example only and do not represent the current or future performance of the property. The value of this transaction to you depends on many factors which should be evaluated by your tax, financial, and legal counsel. You and your counsel should conduct a careful independent investigation of the property to determine that it is suitable to your needs.