

BRIGG'S PLACE

4636 Dodge Street, Omaha, NE

2,103 SF / For Lease



Holly Jones / Director of Retail Services / holly.jones@lundco.com / +1 402 548 4038

Trey MacKnight / Associate / trey.macknight@lundco.com / +1 402 548 4079

LUND.CO.COM

Independently Owned and Operated / A Member of the Cushman & Wakefield Alliance

Cushman & Wakefield Copyright 2019. No warranty or representation, express or implied, is made to the accuracy or completeness of the information contained herein, and same is submitted subject to errors, omissions, change of price, rental or other conditions, withdrawal without notice, and to any special listing conditions imposed by the property owner(s). As applicable, we make no representation as to the condition of the property (or properties) in question.



**WE ARE
THE CENTER
OF RETAIL**

2,103 SF / For Lease

PROPERTY OVERVIEW

Single story retail building with six individual suites, and large tenant signage with great visibility to over 36,000 cars per day! Co-tenants include: EZ Money Check Cashing, Alohma Midtown and Mar Cafe. Located on the northeast corner of 46th and Dodge Street.




PROPERTY HIGHLIGHTS

Lease Rate	\$10.00 - \$12.00 PSF NNN
Total Available	2,103 SF
Building Size	9,240 SF
Year Built	2002
Total Site Area	36,316 SF
Zoning	General Commercial
Parking Ratio	4,67:1,000 SF
Traffic Counts	36,400 EADT
Operating Expenses	\$6.64 PSF

Suite	Square Feet (min - max)	Price/SF NNN	Date Available
4636	2,103 - 2,103	\$10.00 - \$12.00	Immediately



NEIGHBORHOOD DEMOGRAPHICS

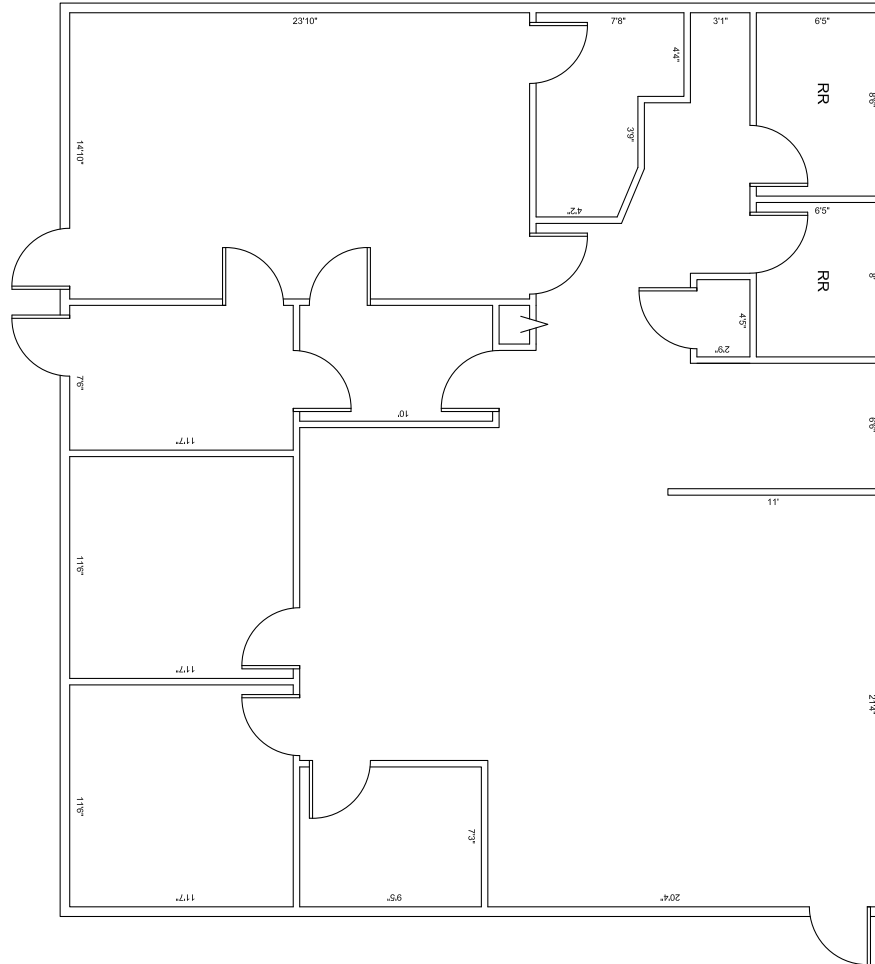
	 POPULATION	 MEDIAN HOUSEHOLD INCOME	 NUMBER OF HOUSEHOLDS
1 Mile	21,410	\$45,677	9,929
3 Miles	147,744	\$40,477	60,420
5 Miles	297,557	\$43,204	117,641

2,103 SF / For Lease

PROPERTY PHOTOS - 4636



FLOOR PLAN - SUITE 4636



** Floor plan measurements are approximate and are for illustration purposes only.

2,103 SF / For Lease

