

ROSS PARK MALL OUTPARCEL FOR SALE OR LEASE

100 Cheryl Drive | Pittsburgh, PA 15237



ROSS PARK MALL ANCHORS



NORDSTROM

SANDY CIKOVIC scikovic@HannaLWE.com 412.261.2200



CHAINLINKS
RETAIL ADVISORS

SITE	Existing 550 SF former bank building on 0.488 acres Four lane drive-thru with 1,200 SF canopy
RENT	Negotiable NNN
SALE	\$500,000
DELIVERY	Immediate
ZONING	C-1 Regional Commercial District and TD-1 Overlay District (McKnight Road Transportation)
FRONTAGE	246' on Cheryl Drive
NOTES	<ul style="list-style-type: none"> Ross Park Mall is Western Pennsylvania's premier shopping mall with 1.237 million SF anchored by Macy's, Nordstrom, Crate & Barrel, JC Penny, and LL Bean

All information furnished regarding property for sale, rental or financing is from sources deemed reliable. No representation is made as to the accuracy thereof, and it is submitted subject to errors, omissions, change of price, rental, or other conditions, prior sale lease, financing or withdrawal without notice. Hanna Langholz Wilson Ellis will make no representation, and assume no obligation, regarding the presence or absence of toxic or hazardous waste or substances or other undesirable material on or about the property.

MARKET AERIAL

100 CHERYL DRIVE, PITTSBURGH, PA 15237

	1 MILE	3 MILE	5 MILE
POPULATION	7,459	67,253	166,685
HOUSEHOLDS	3,649	29,516	73,100
AVERAGE HH INCOME	\$87,431	\$94,624	\$91,290
MEDIAN HH INCOME	\$71,162	\$76,198	\$66,418



SITE

ROSS PARK MALL



ROSS PARK TRAILS
(HOUSING)

COSMOPOLITAN
LUXURY APARTMENTS

ROSS PARK MALL

SHORKEY
MITSUBISHI

MACY'S
HOME STORE

JCPENNEY

MACY'S

REDEVELOPMENT
AREA

CRATE & BARREL

OLD MCKNIGHT RD

SITE

NORDSTROM

L.I. BEAN

THE
CHEESECAKE
FACTORY

CALIFORNIA
PIZZA KITCHEN

US 19 / MCKNIGHT RD

ROSS PARK MALL DR.

WOODHAWK
CLUB
APARTMENTS

HOME
DEPOT



AERIAL OUTLINE

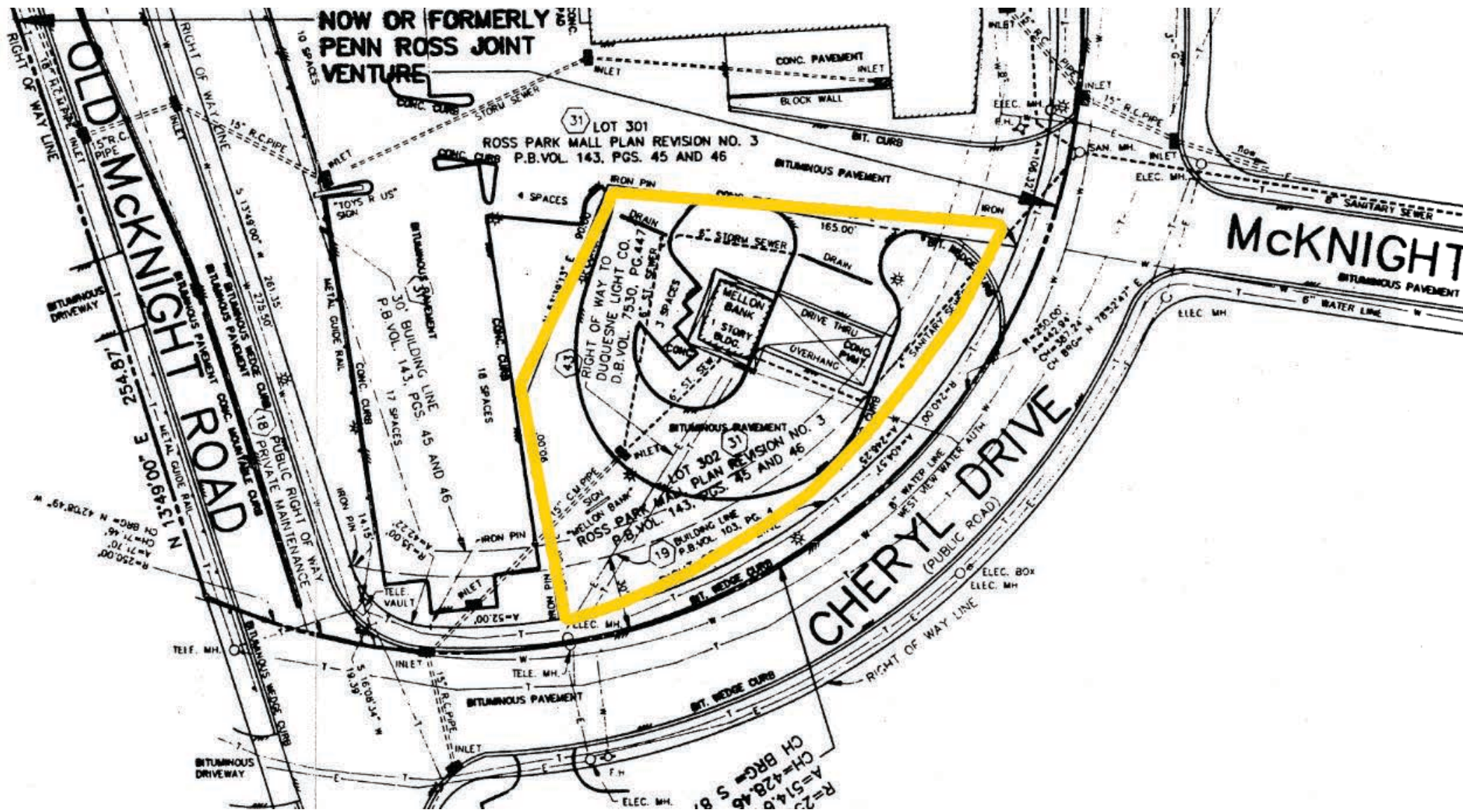
100 CHERYL DRIVE, PITTSBURGH, PA 15237



Cheryl Drive

SURVEY

100 CHERYL DRIVE, PITTSBURGH, PA 15237





ROSS PARK MALL

A SIMON MALL

Pittsburgh's style destination of choice, Ross Park Mall attracts sophisticated, style-conscious shoppers with its accessibility, exclusive selection of luxury brands and delicious eateries.

- The center is set to undergo a **comprehensive redevelopment** that will change the center's footprint and add more unique, first-to-market retail, entertainment, and restaurants.
- Plans include a new Dining Hall and three levels of expanded options for shopping, dining, relaxation and recreation.
- Construction is slated to start in early 2019 with **completion in 2020**.
- The center features a distinctively strong mix of home furnishing and lifestyle retailers that include Crate & Barrel, Pottery Barn, Restoration Hardware and Williams-Sonoma.

