

FOR SALE

Vacant Land Ready for Development

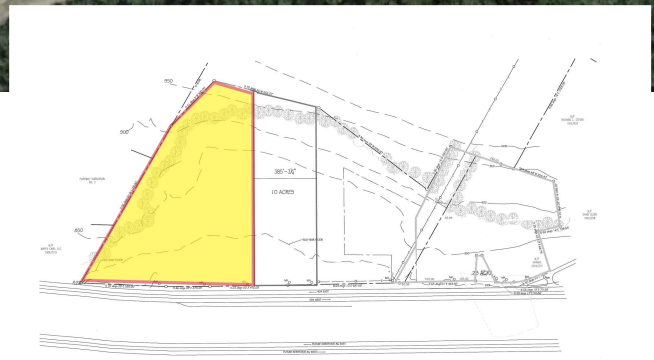
1915 Vestal Pkwy W. Vestal, NY 13850



1915 Vestal Parkway West

PROPERTY HIGHLIGHTS

- 13 Acres +/- Zoned Community Business on Vestal Parkway
- Borders Developmental Residence in Rear
- PDD Plan in Place
- May Be Subdivided
- Owner Will Survey Land With Accepted Purchase
- Part of Larger Lot Which is Developed as Soccer Building and Chucksters Recreation Park
- Utilities Terminate at Easterly Portion of Parcel
- Ideal for Housing Development/Retail Self Storage
- Priced at \$897,000 or 69k/acre



DEMOGRAPHIC SNAPSHOT

	1 Miles	3 Miles	5 Miles
Population	1,714	26,494	59,413
Households	802	11,559	25,689
Median HH Income	\$63,630	\$57,393	\$59,952
Average HH Income	\$76,293	\$73,258	\$78,681
Daytime Population	1,525	24,229	55,473



3630 George F. Highway Endwell, NY 13760

The information submitted herein is not guaranteed. Although obtained from reliable resources, it is subject to errors, omissions, prior sale and withdrawal from the market without notice. Broker has made no investigation and makes no representation of the property.



Karen Klecar

Licensed Real Estate Associate Broker

607.624.0143

KarenKlecar@hannacre.com

1915 Vestal Pkwy W. Vestal, NY 13850 | 1,2,3 Mile Demo Report

2020 Key Demographic Indicators (Esri)	1 mile	3 miles	5 miles
2020 Total Population (Esri)	1,714	26,494	59,413
2025 Total Population (Esri)	1,657	25,757	57,808
2018-2023 Population: Annual Growth Rate (Esri)	-0.67%	-0.56%	-0.55%
2020 Key Demographic Indicators (Esri)	1 mile	3 miles	5 miles
2020 Total Households (Esri)	802	11,559	25,689
2020 Average Household Size (Esri)	2.12	2.25	2.28
2020 Income (Esri)	1 mile	3 miles	5 miles
2020 Median Household Income (Esri)	\$63,630	\$57,393	\$59,952
2020 Average Household Income	\$76,293	\$73,258	\$78,681
2020 Per Capita Income (Esri)	\$34,889	\$31,993	\$34,065
	1 mile	3 miles	5 miles
2018-2023 Per Capita Income: Annual Growth Rate (Esri)	1.89%	1.81%	1.83%
2018-2023 Median Household Income: Annual Growth Rate (Esri)	1.10%	0.85%	0.88%
2010 Age: 5 Year Increments (U.S. Census)	1 mile	3 miles	5 miles
2010 Median Age (U.S. Census)	46.2	42.4	43.3
2020 Median Age (Esri)	49.4	44.0	45.0
2020 Total Population Age 18+ (Esri)	1,429	21,572	48,180
2020 Educational Attainment (Esri)	1 mile	3 miles	5 miles
2020 Education: High School Diploma (Esri) (%)	24%	22%	22%
2020 Education: GED/Alternative Credential (Esri) (%)	4%	6%	5%
2020 Education: Some College/No Degree (Esri) (%)	15%	17%	17%
2020 Education: Associate's Degree (Esri) (%)	9%	13%	14%
2020 Education: Bachelor's Degree (Esri) (%)	18%	20%	21%
2020 Education: Graduate/Professional Degree (Esri) (%)	27%	15%	17%
2020 Educational Attainment Base (Esri)	1,319	19,553	43,950
2020 Daytime Population	1 mile	3 miles	5 miles
2020 Total Daytime Population	1,525	24,229	55,473
2020 Daytime Population: Workers	510	9,611	22,505
2020 Daytime Population: Residents	1,015	14,618	32,968
2020 Daytime Population Density (Pop per Square Mile) (Esri)	485.8	857.1	706.4

Source: Esri, Esri and Infogroup, U.S. Census

1915 Vestal Pkwy W. Vestal, NY 13850 | 1,2,3 Mile Demo Report

2020 Business Summary by SIC	1 mile	3 miles	5 miles
2020 Total (SIC01-99) Businesses	43	910	1,877
2020 Total (SIC01-99) Employees	619	10,555	24,877
2010 Race and Hispanic Origin (U.S.	1 mile	3 miles	5 miles
2010 White Population (U.S. Census)	1,754	25,221	56,363
2010 Black/African American	39	953	1,749
2010 American Indian/Alaska Native	0	36	86
2010 Asian Population (U.S. Census)	21	542	1,779
2010 Pacific Islander Population (U.S.	0	24	45
2010 Other Race Population (U.S.	3	140	309
2010 Population of Two or More Races	18	552	1,166
2010 Hispanic Population (U.S.	31	713	1,488
2010 Hispanic White Population (U.S.	23	426	907
2010 Hispanic Black/African American	1	74	129
2010 Hispanic American Indian/	0	4	11
2010 Hispanic Asian Population (U.S.	0	1	4
2010 Hispanic Pacific Islander	0	11	13
2010 Hispanic Other Race Population	3	107	243
2010 Hispanic Population Reporting	3	89	180
2010 White Non-Hispanic Population	1,731	24,795	55,455
2010 Minority Population (U.S.	104	2,673	6,042
2010 Diversity Index (U.S. Census)	11.6	19.8	19.8
2010 Base for Population by Race	1,835	27,468	61,497
2010 Population Reporting One Race	1,817	26,916	60,331
2010 Base for Population Age 18+ by	1,480	21,670	48,507
2010 Population Age 18+ Reporting	1,472	21,428	47,993
2010 Base for Hispanic Population by	30	712	1,487
2010 Hispanic Population Reporting	27	624	1,308
2010 Base for Hispanic Population	19	434	897
2010 Hispanic Population Age 18+	18	390	811
2010 Base for Population <18 by	355	5,798	12,990