

FOR SUB-LEASE - Built Out Medical Office

Gulfcoast Medical Arts Building

1890 SW Health Parkway, Suite 100, Naples, FL 34109



OFFERING SUMMARY

Lease Rate/ Per Month: \$2,900.00

Suite Size: 750 SF

Year Building Built: 2000

Year Suite Built: 2004

PROPERTY OVERVIEW

Great for satellite office or small start up medical office. Space includes one doctors office, two exam rooms with sinks, nurses station, large granite reception area, and waiting room. The unit has a back door to doctor's covered parking space.

PROPERTY HIGHLIGHTS

- Efficiently built out medical office
- Close to NCH and Physicians Regional
- First floor location
- For Sub-Lease
- One Covered Parking Space
- Covered Patient drop-off & pick-up
- Back door access to parking lot

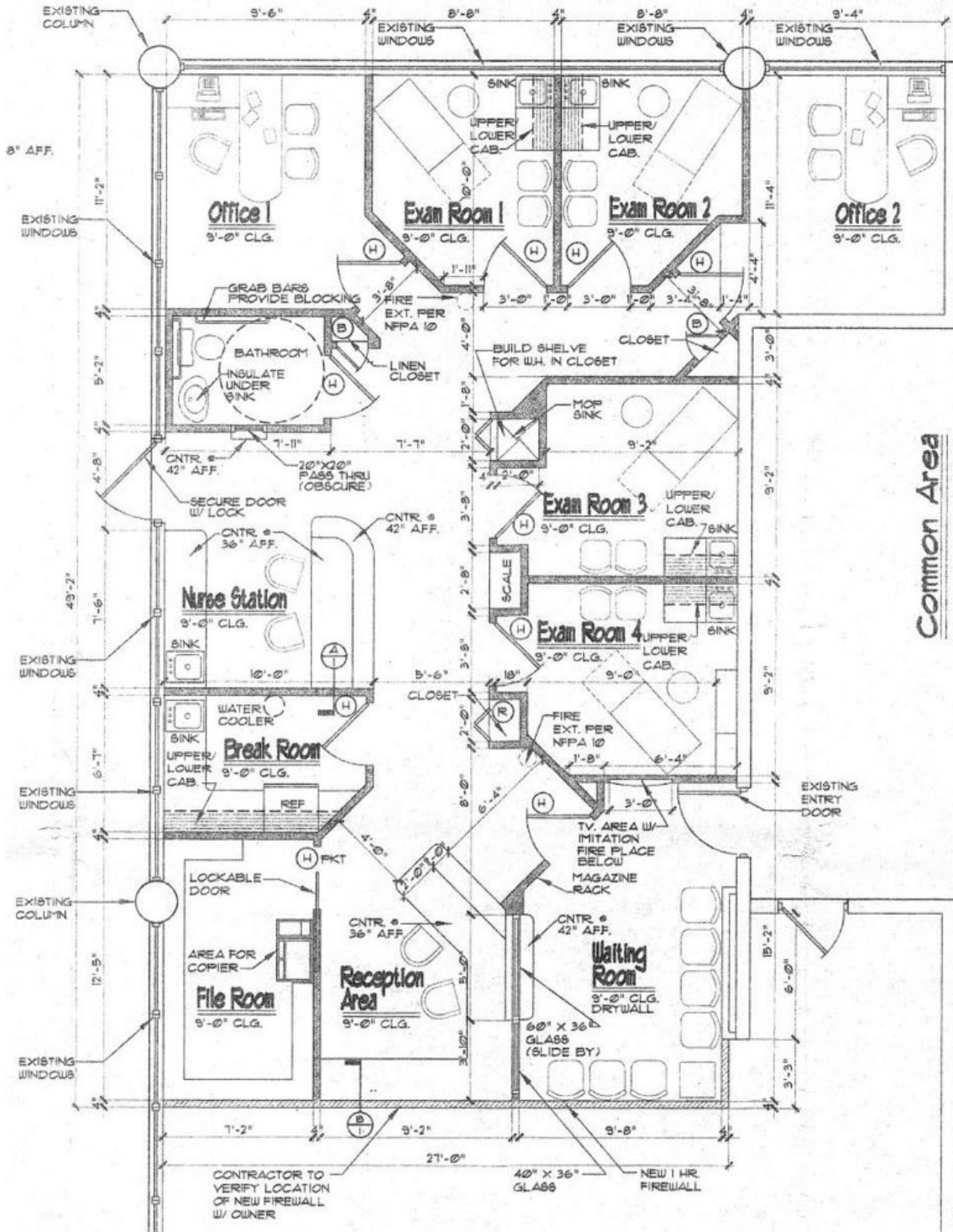
Todd Sabin
Managing Director
239.315.7015
todd.sabin@svn.com

Philip Josberger
Associate Advisor
239.261.2627
philip.josberger@svn.com



The information presented here is deemed to be accurate, but it has not been independently verified. We make no guarantee, warranty or representation. It is your responsibility to independently confirm accuracy and completeness. All SVN® offices are independently owned and operated.

FOR SUB-LEASE - Built Out Medical Office



Todd Sabin
 Managing Director
 239.315.7015
 todd.sabin@svn.com

Philip Josberger
 Associate Advisor
 239.261.2627
 philip.josberger@svn.com



FOR SUB-LEASE - Built Out Medical Office



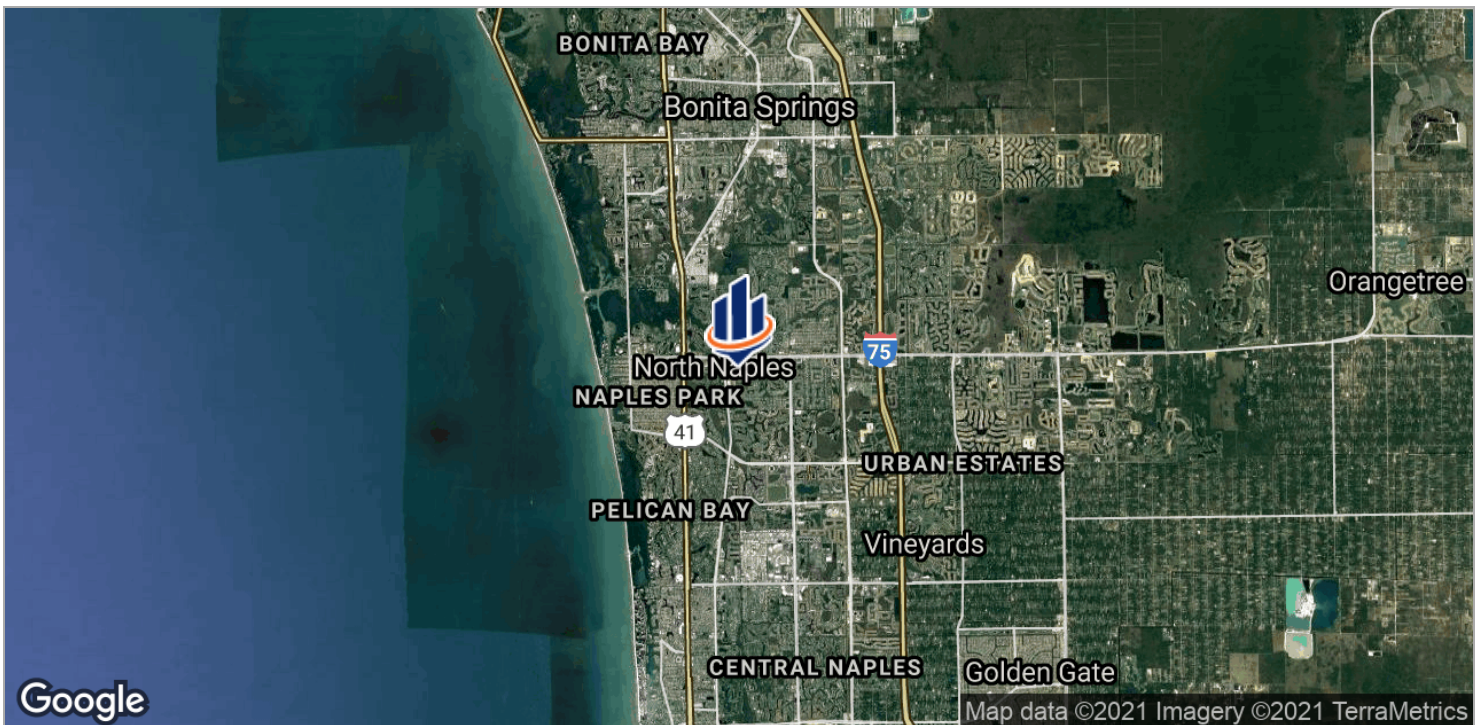
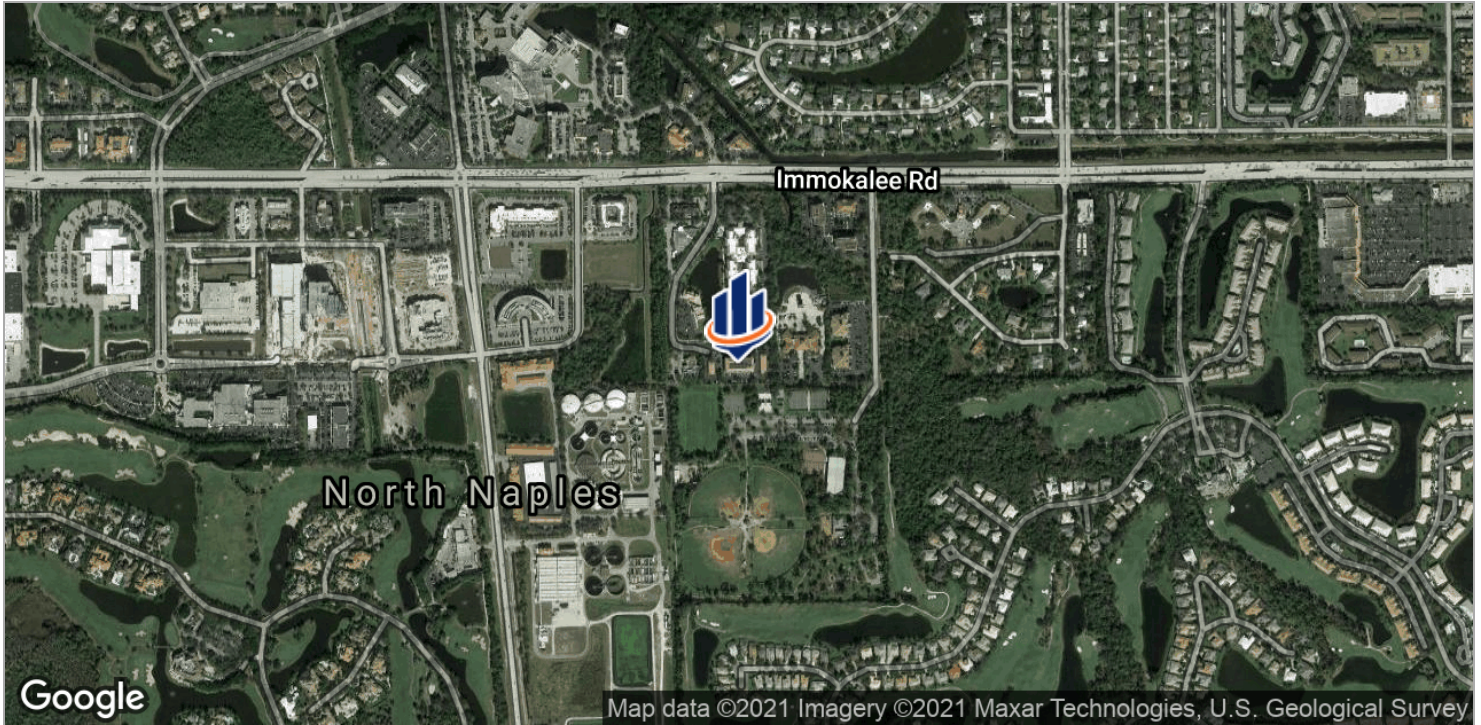
Todd Sabin
Managing Director
239.315.7015
todd.sabin@svn.com

Philip Josberger
Associate Advisor
239.261.2627
philip.josberger@svn.com



The information presented here is deemed to be accurate, but it has not been independently verified. We make no guarantee, warranty or representation. It is your responsibility to independently confirm accuracy and completeness. All SVN® offices are independently owned and operated.

FOR SUB-LEASE - Built Out Medical Office



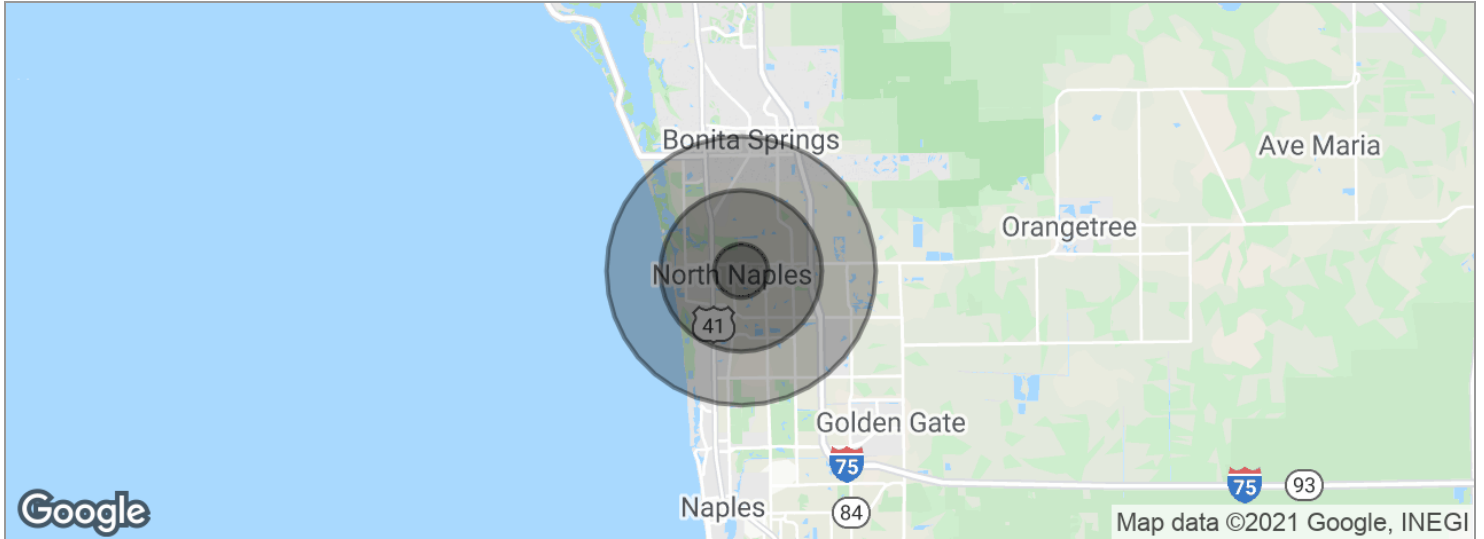
Todd Sabin
Managing Director
239.315.7015
todd.sabin@svn.com

Philip Josberger
Associate Advisor
239.261.2627
philip.josberger@svn.com



The information presented here is deemed to be accurate, but it has not been independently verified. We make no guarantee, warranty or representation. It is your responsibility to independently confirm accuracy and completeness. All SVN® offices are independently owned and operated.

FOR SUB-LEASE - Built Out Medical Office



POPULATION

| | 1 MILE | 3 MILES | 5 MILES |
|---------------------|--------|---------|---------|
| Total population | 5,232 | 44,828 | 101,321 |
| Median age | 54.5 | 51.8 | 51.5 |
| Median age (Male) | 55.2 | 51.5 | 50.9 |
| Median age (Female) | 54.7 | 52.4 | 51.8 |

HOUSEHOLDS & INCOME

| | 1 MILE | 3 MILES | 5 MILES |
|---------------------|-----------|-----------|-----------|
| Total households | 2,062 | 19,110 | 43,804 |
| # of persons per HH | 2.5 | 2.3 | 2.3 |
| Average HH income | \$121,573 | \$108,548 | \$105,871 |
| Average house value | \$361,652 | \$527,101 | \$486,847 |

* Demographic data derived from 2010 US Census

Todd Sabin
 Managing Director
 239.315.7015
 todd.sabin@svn.com

Philip Josberger
 Associate Advisor
 239.261.2627
 philip.josberger@svn.com



The information presented here is deemed to be accurate, but it has not been independently verified. We make no guarantee, warranty or representation. It is your responsibility to independently confirm accuracy and completeness. All SVN® offices are independently owned and operated.