

FOR LEASE - Medical | Office Space

Berkshire Plaza

7385 Radio Road, Unit 104. Naples, FL 34104



OFFERING SUMMARY

Available SF: 2,840 SF

Lease Rate: \$25.00 PSF NNN

CAM: \$8.03 PSF

Year Built: 2001

PROPERTY OVERVIEW

This built out medical office space, includes four exam rooms, two offices, a break-room and a reception area. High concentration of residential creating a very high demand for more commercial growth in this area. This out-parcel property is surrounded by many nearby high profile tenants such as Publix, Aldi, Starbucks, Verizon, Five Guys, Moes and Walgreens.

PROPERTY HIGHLIGHTS

- Out parcel to Publix
- Located at a signalized intersection
- Excellent visibility and signage
- Medical, Office or Retail use
- Located within Berkshire Plaza
- Close proximity to many restaurants and retailers
- Less than one mile from I-75

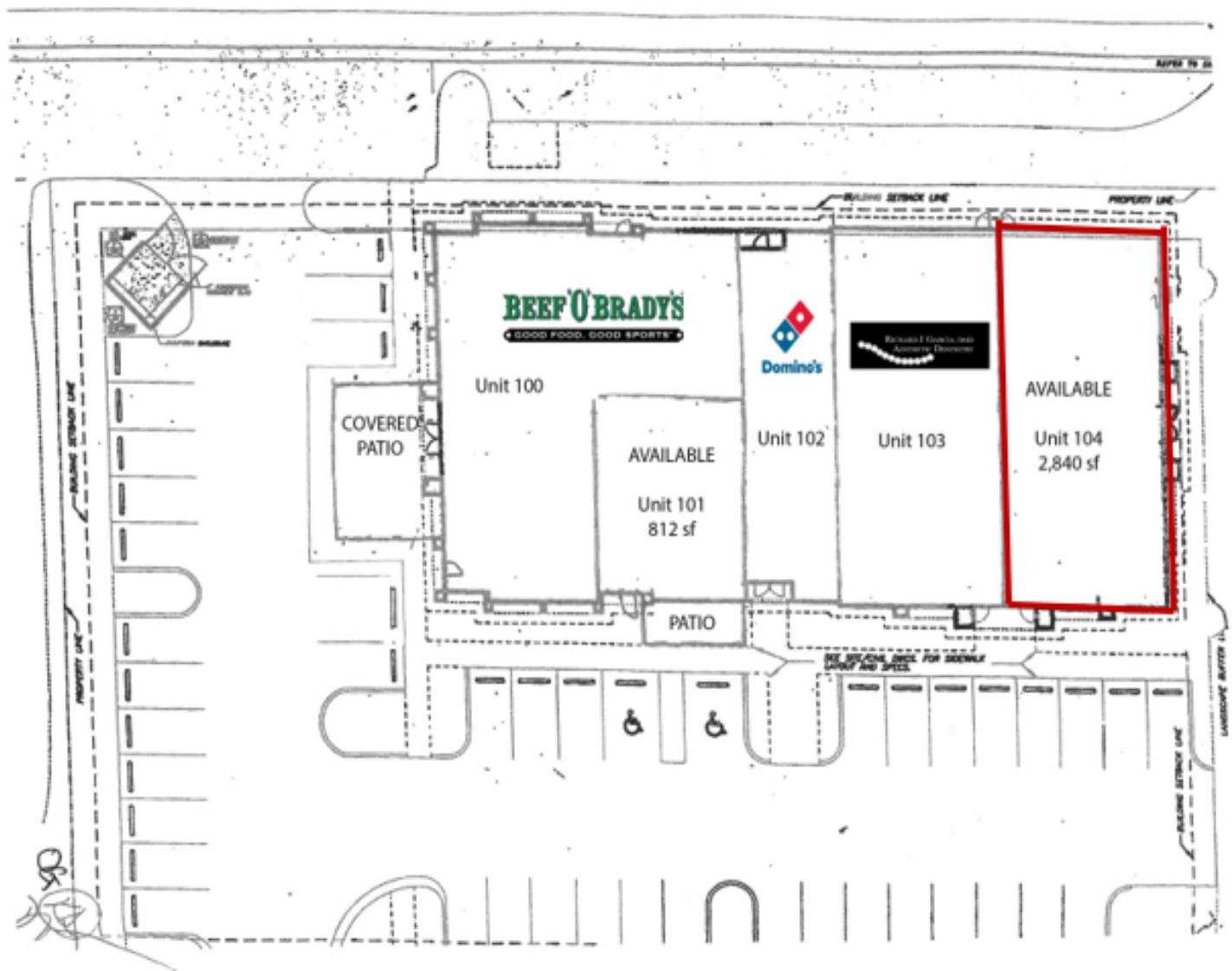
Todd Sabin
Managing Director
239.315.7015
todd.sabin@svn.com

Philip Josberger
Associate Advisor
239.261.2627
philip.josberger@svn.com



The information presented here is deemed to be accurate, but it has not been independently verified. We make no guarantee, warranty or representation. It is your responsibility to independently confirm accuracy and completeness. All SVN® offices are independently owned and operated.

FOR LEASE - Medical | Office Space



Todd Sabin
Managing Director
239.315.7015
todd.sabin@svn.com

Philip Josberger
Associate Advisor
239.261.2627
philip.josberger@svn.com



The information presented here is deemed to be accurate, but it has not been independently verified. We make no guarantee, warranty or representation. It is your responsibility to independently confirm accuracy and completeness. All SVN® offices are independently owned and operated.

FOR LEASE - Medical | Office Space

Berkshire Plaza - Medical | Office

7385 Radio Road, Naples, FL 34104



Todd Sabin
Managing Director
239.315.7015
todd.sabin@svn.com

Philip Josberger
Associate Advisor
239.261.2627
philip.josberger@svn.com



The information presented here is deemed to be accurate, but it has not been independently verified. We make no guarantee, warranty or representation. It is your responsibility to independently confirm accuracy and completeness. All SVN® offices are independently owned and operated.

FOR LEASE - Medical | Office Space



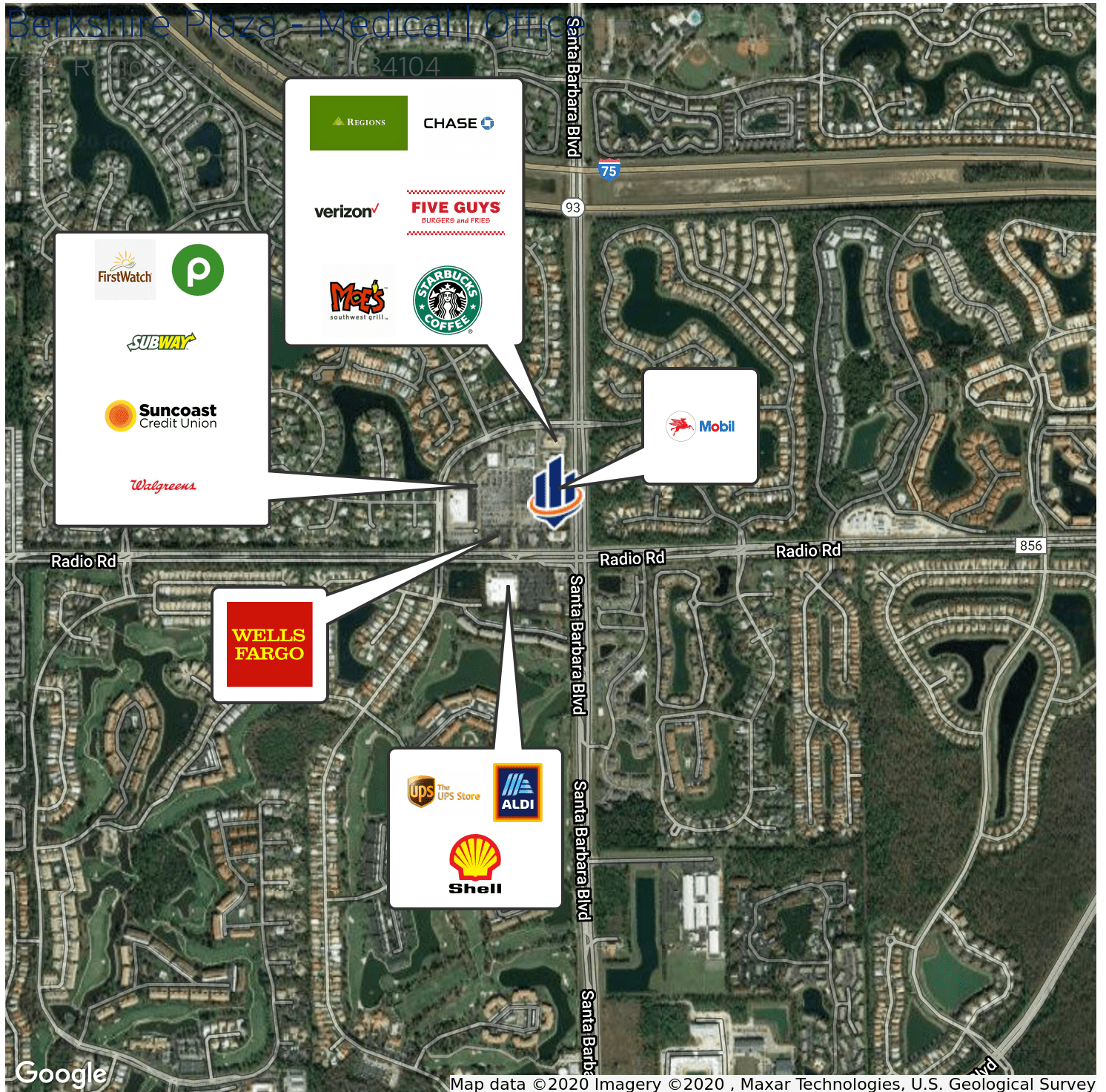
Todd Sabin
Managing Director
239.315.7015
todd.sabin@svn.com

Philip Josberger
Associate Advisor
239.261.2627
philip.josberger@svn.com



The information presented here is deemed to be accurate, but it has not been independently verified. We make no guarantee, warranty or representation. It is your responsibility to independently confirm accuracy and completeness. All SVN® offices are independently owned and operated.

FOR LEASE - Medical | Office Space



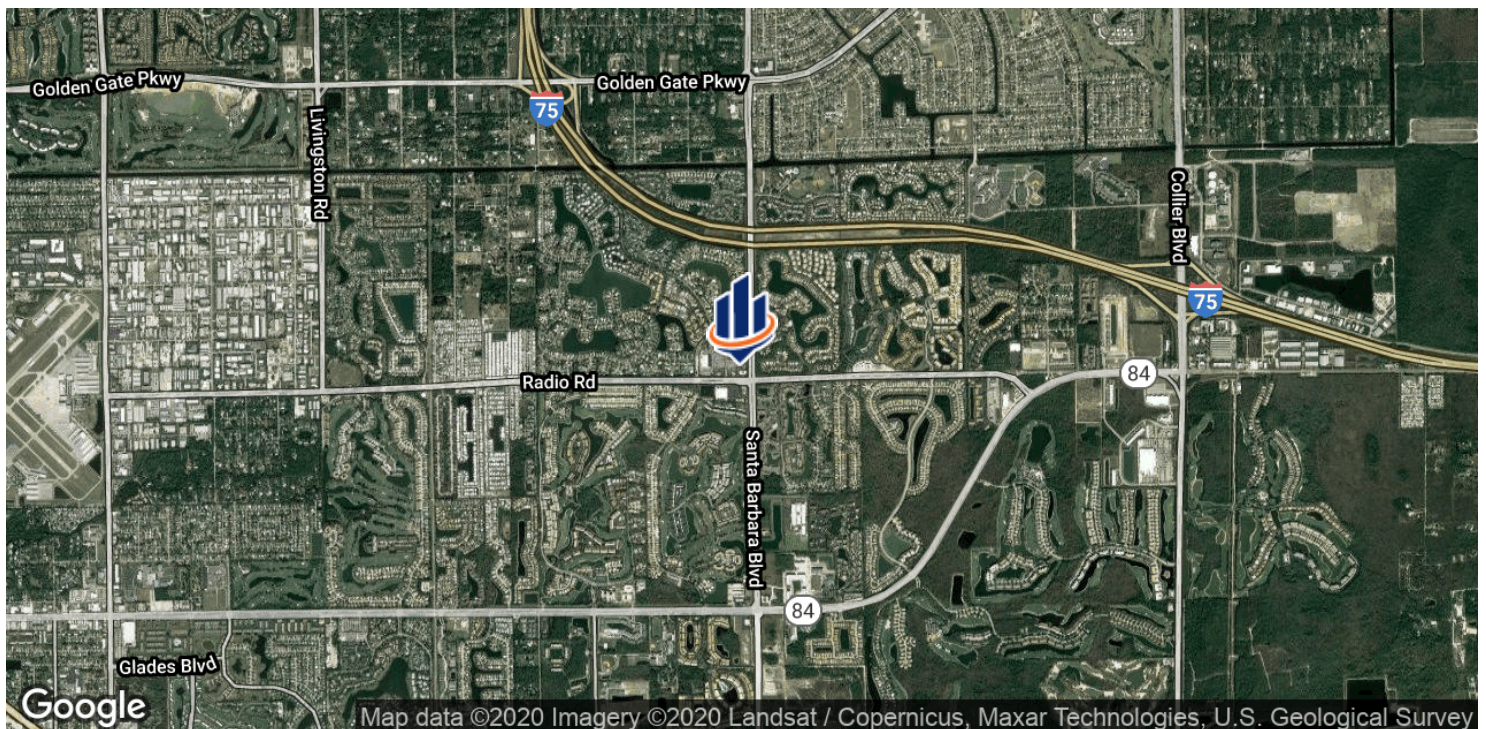
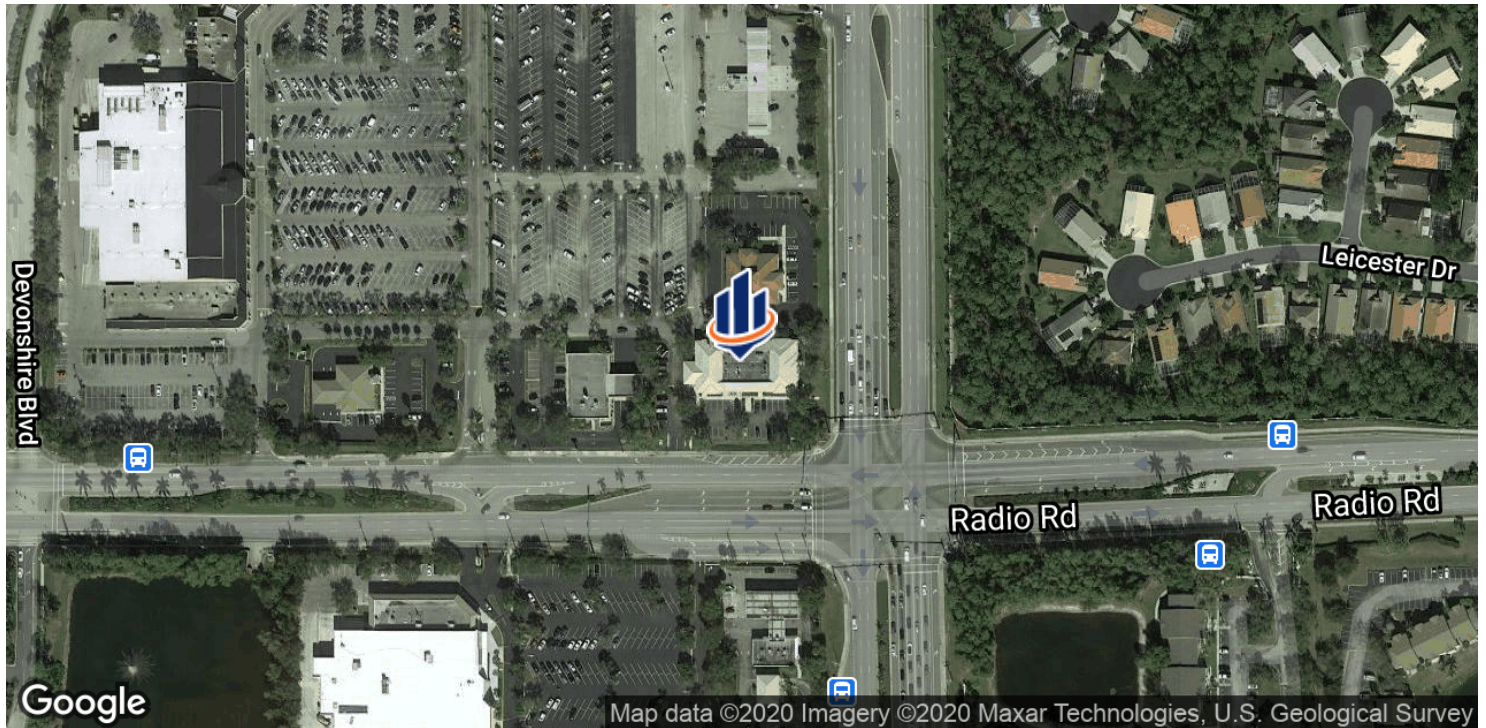
Todd Sabin
Managing Director
239.315.7015
todd.sabin@svn.com

Philip Josberger
Associate Advisor
239.261.2627
philip.josberger@svn.com



The information presented here is deemed to be accurate, but it has not been independently verified. We make no guarantee, warranty or representation. It is your responsibility to independently confirm accuracy and completeness. All SVN® offices are independently owned and operated.

FOR LEASE - Medical | Office Space



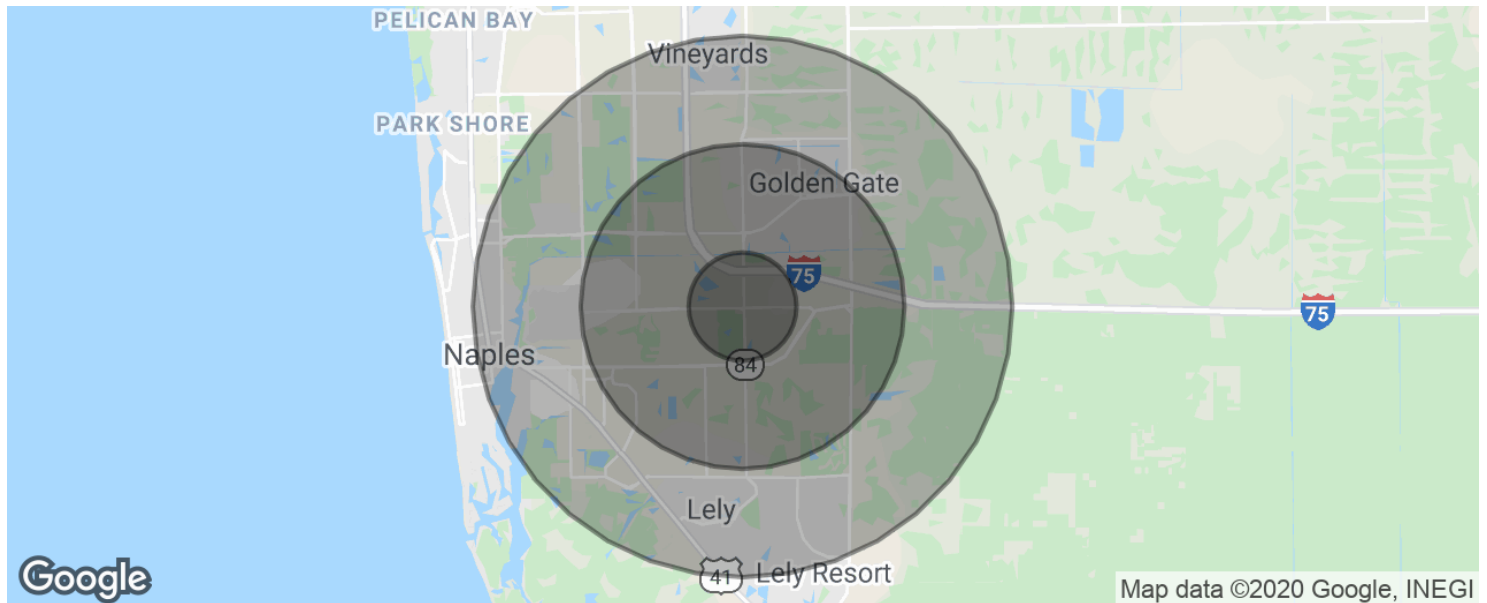
Todd Sabin
Managing Director
239.315.7015
todd.sabin@svn.com

Philip Josberger
Associate Advisor
239.261.2627
philip.josberger@svn.com



The information presented here is deemed to be accurate, but it has not been independently verified. We make no guarantee, warranty or representation. It is your responsibility to independently confirm accuracy and completeness. All SVN® offices are independently owned and operated.

FOR LEASE - Medical | Office Space



POPULATION

	1 MILE	3 MILES	5 MILES
Total population	8,561	60,772	121,023
Median age	42.3	42.8	42.8
Median age (Male)	42.0	41.7	41.3
Median age (Female)	44.4	44.7	44.7

HOUSEHOLDS & INCOME

	1 MILE	3 MILES	5 MILES
Total households	3,450	22,570	44,757
# of persons per HH	2.5	2.7	2.7
Average HH income	\$60,228	\$65,047	\$71,991
Average house value	\$306,885	\$264,962	\$280,400

* Demographic data derived from 2010 US Census

Todd Sabin
Managing Director
239.315.7015
todd.sabin@svn.com

Philip Josberger
Associate Advisor
239.261.2627
philip.josberger@svn.com



The information presented here is deemed to be accurate, but it has not been independently verified. We make no guarantee, warranty or representation. It is your responsibility to independently confirm accuracy and completeness. All SVN® offices are independently owned and operated.