

SHOP AT ATLAS ROAD

2751 Shop Road, Columbia, South Carolina 29209



Wilson Kibler
COMMERCIAL REAL ESTATE



154 ACRES FOR SALE

- Traffic Count on Shop Rd.: 15,401
Vehicles Per Day (2018)
- Norfolk Southern Rail Adjacent
- Zoning: M-1 Industrial & Commercial
- 8" Water Line & 30" Sewer Line
- TMS#: R16200-01-04
- **Sales Price: \$3,043,000**



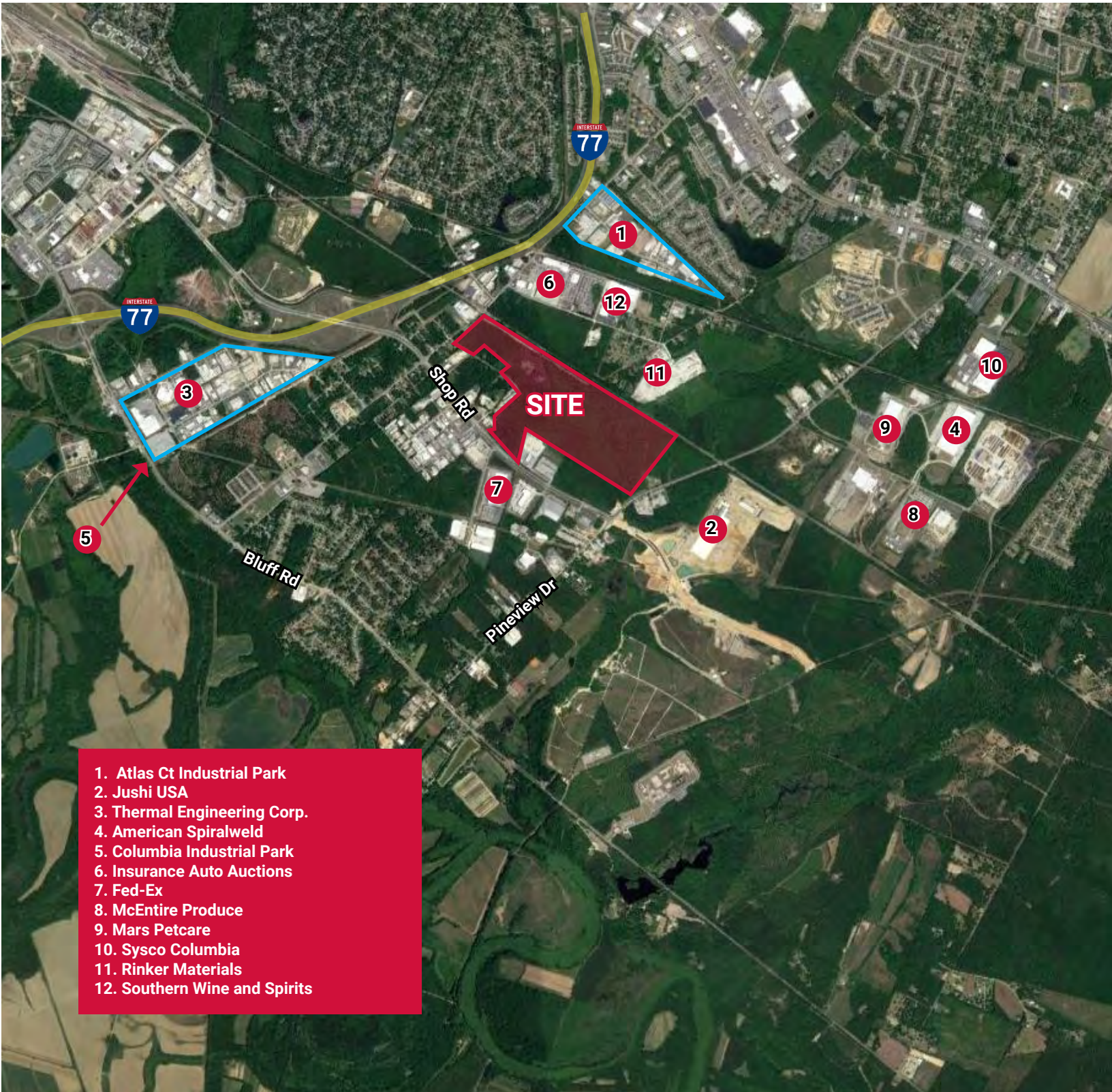
1111 Laurel Street, Columbia, SC 29201 T 803.779.8600 www.wilsonkibler.com

George McCutchen, CCIM, SIOR
803.255.8603 gmccutchen@wilsonkibler.com

The information contained herein has been obtained from sources we believe to be reliable; however, Wilson Kibler has not conducted any investigation regarding these matters and makes no warranty or representation whatsoever regarding the accuracy or completeness of the information provided. Independently owned and operated.

SHOP AT ATLAS ROAD

2751 Shop Road, Columbia, South Carolina 29209



- 1. Atlas Ct Industrial Park
- 2. Jushi USA
- 3. Thermal Engineering Corp.
- 4. American Spiralweld
- 5. Columbia Industrial Park
- 6. Insurance Auto Auctions
- 7. Fed-Ex
- 8. McEntire Produce
- 9. Mars Petcare
- 10. Sysco Columbia
- 11. Rinker Materials
- 12. Southern Wine and Spirits

1111 Laurel Street, Columbia, SC 29201 T 803.779.8600 www.wilsonkibler.com

George McCutchen, CCIM, SIOR

803.255.8603 gmccutchen@wilsonkibler.com

The information contained herein has been obtained from sources we believe to be reliable; however, Wilson Kibler has not conducted any investigation regarding these matters and makes no warranty or representation whatsoever regarding the accuracy or completeness of the information provided. Independently owned and operated.