



FOR LEASE

[Click to View Drone Footage](#)

2708 Shop Road

Columbia, SC 29209

Presented By:

George McCutchen, CCIM, SIOR
Senior Associate
803.255.8603
gmccutchen@wilsonkibler.com

111 Laurel Street, Columbia, SC 29201 |
www.wilsonkibler.com



THE INFORMATION CONTAINED HEREIN HAS BEEN GIVEN TO US BY THE OWNER OF THE PROPERTY OR OTHER SOURCES WE DEEM RELIABLE. WE HAVE NO REASON TO DOUBT ITS ACCURACY, BUT WE DO NOT GUARANTEE IT. ALL INFORMATION SHOULD BE VERIFIED PRIOR TO PURCHASE OR LEASE.

2708 SHOP ROAD

Columbia, South Carolina 29209



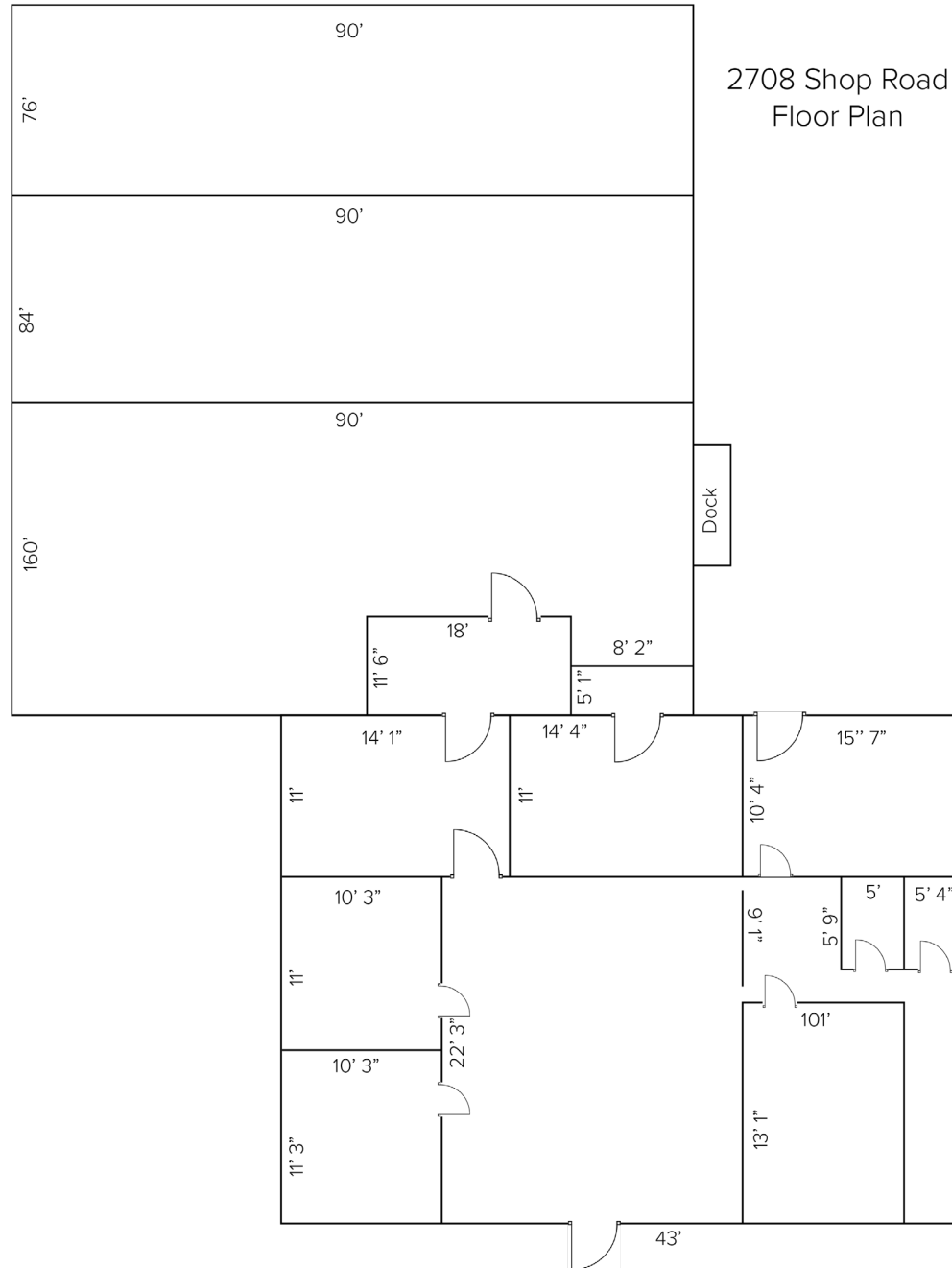
Property Features

- ◆ ±30,475 Total SF in Southeast Columbia
- ◆ Approximately 1,657 SF of Office space, consisting of:
 - Reception
 - Waiting room/Administrative space
 - Break room
 - 3 Offices
 - Conference room
- ◆ ±2.1 Acres
- ◆ ±.75 Acres Fenced
- ◆ 0.8 Miles to I-77
- ◆ 10 Parking Spaces for Office
- ◆ 6 Total Doors:
 - (6) Dock Well positions at (2) 12' x 12' covered doors
 - (2) 12' x 13' Roll Up
 - (2) 12' x 14' Roll Up
- ◆ 20' Clear Eave height, 22' Clear Center height
- ◆ Column Spacing: 45' from walls and 25' between beams in the center
- ◆ Taxes & Insurance: \$1.00 PSF
- ◆ ±2 additional acres may be added for \$1,500 more per month
- ◆ **LEASE RATE: \$4.45 PSF NNN**



2708 SHOP ROAD

Columbia, South Carolina 29209



2708 Shop Road
Floor Plan

*Note: Not to Scale

2708 SHOP ROAD

Columbia, South Carolina 29209



Property Aerial



2708 SHOP ROAD

Columbia, South Carolina 29209



Location Map

