

Fountains Medical Center, Condo E-5

5620 W THUNDERBIRD RD, GLENDALE, AZ 85306

FOR SALE

Fountains Medical Center, Condo E-5



FOR MORE INFORMATION

❏ **Perry Gabuzzi, CCIM**
Director | Brokerage Services
O 623.344.4516
C 602.373.7862
perry.gabuzzi@theplazaco.com

❏ **Margaret Lloyd**
Senior Vice President
O 623.344.4558
C 602.828.7214
margaret.lloyd@theplazaco.com

Executive Summary



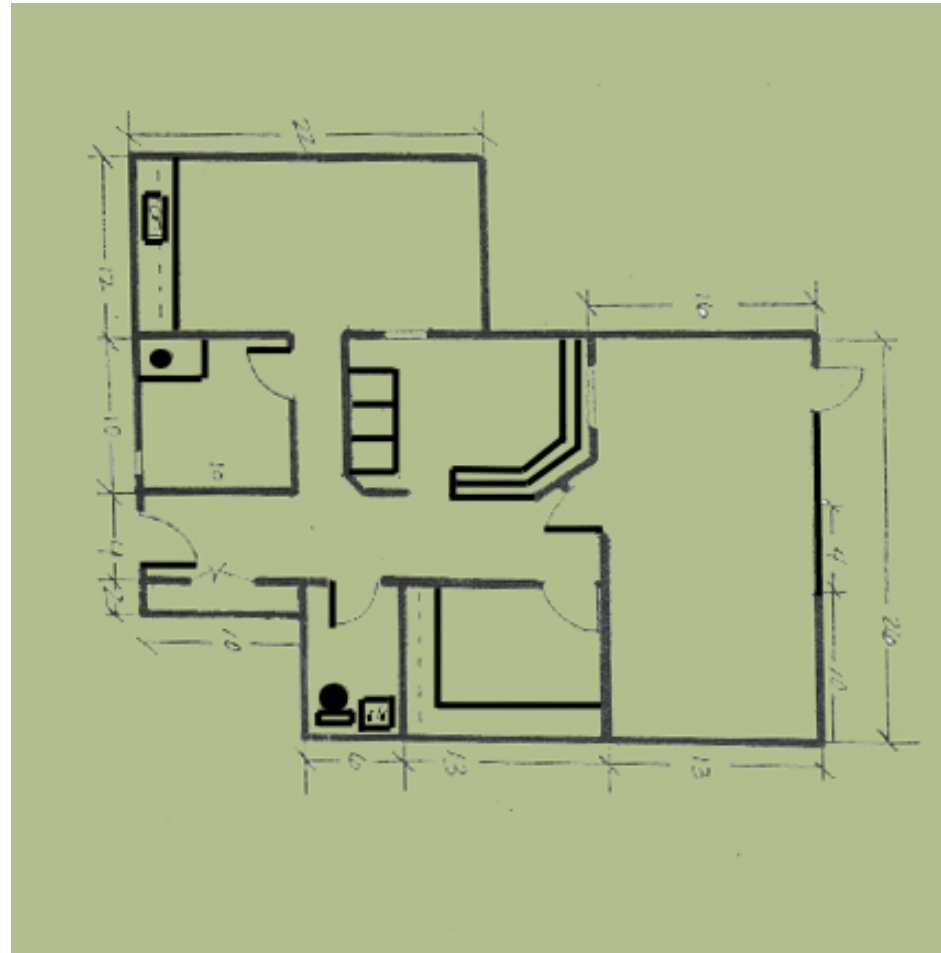
PROPERTY SUMMARY

Sale Price:	\$205,000
Condo Size:	1,311 RSF
Parking Ratio:	5/1,000 sf abundant open & covered parking
Building Class:	B
Year Built:	1984

PROPERTY HIGHLIGHTS

- Great mix of medical and dental tenants
- Unique opportunity to own in a tight medical office submarket
- 5/1000 parking ratio; abundant open & covered parking

Floor Plans



E-5 - 1,311 RSF

Floor Plan Information



Perry Gabuzzi, CCIM

Director | Brokerage Services

O 623.972.1184

C 602.373.7862

perry.gabuzzi@theplazaco.com



Margaret Lloyd

Senior Vice President

O 623.972.1184

C 602.828.7214

margaret.lloyd@theplazaco.com

Plaza Companies

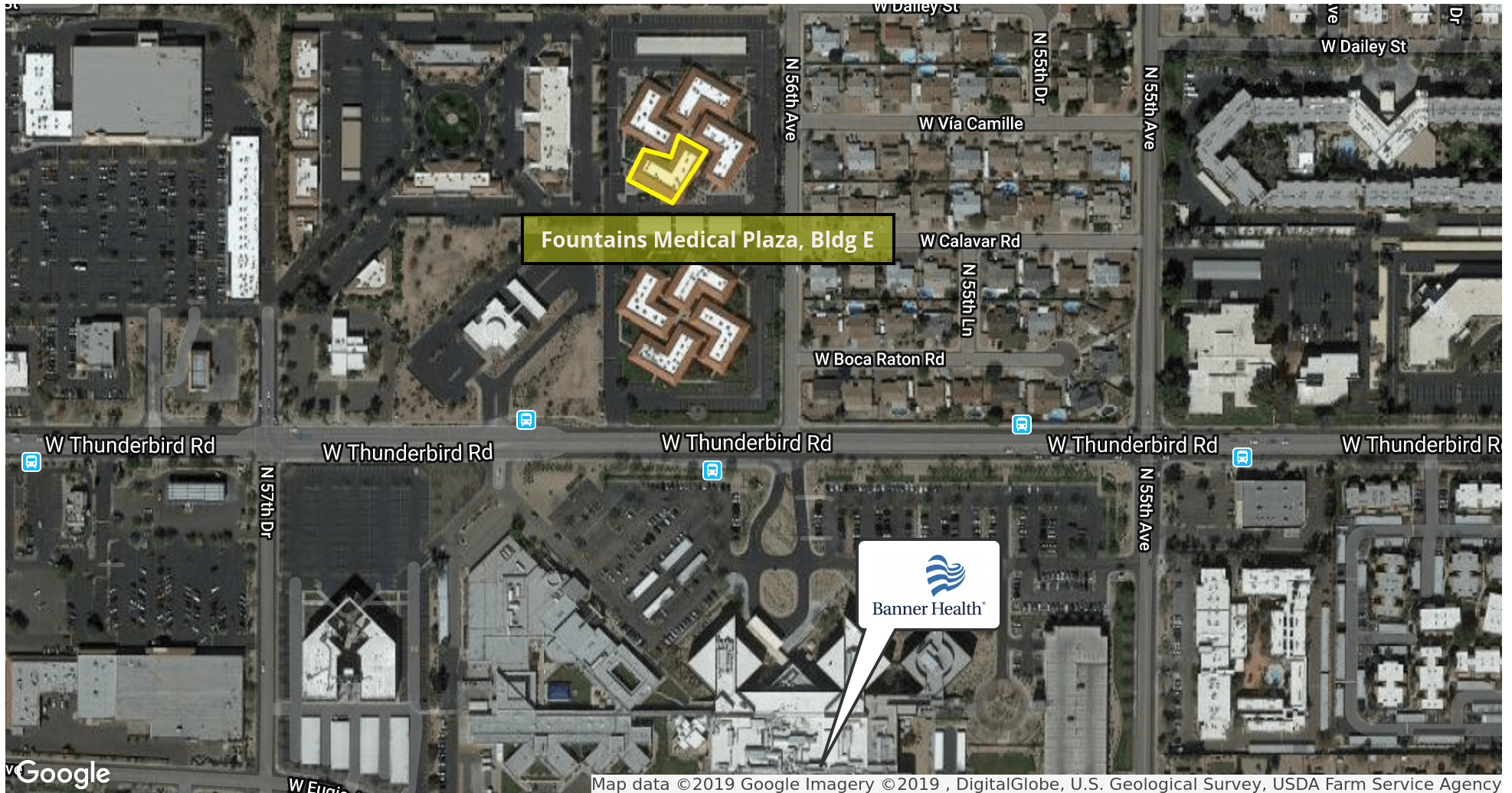
theplazaco.com

PEORIA | SCOTTSDALE | TUCSON

Fountains Medical Center, Condo E-5

5620 W THUNDERBIRD RD, GLENDALE, AZ 85306

Retailer Map



Map data ©2019 Google Imagery ©2019 , DigitalGlobe, U.S. Geological Survey, USDA Farm Service Agency