

EXECUTIVE SUMMARY

100 Saraland Loop | Saraland, AL 36571



PROPERTY WEBSITE

OFFERING SUMMARY

Available SF: 20,000 SF

Lease Rate: Negotiable

Building Size: 123,578 SF

PROPERTY OVERVIEW

Conveniently located neighborhood shopping center anchored by Rouses Grocery.

PROPERTY HIGHLIGHTS

- Currently being renovated
- Great anchors with Rouses Grocery and YMCA
- Other tenants include Burke's, Saraland Pharmacy, Godfathers Pizza, Family Dollar, and more



White-Spunner Realty | 251.471.1000 | 3201 Dauphin Street, Suite A | Mobile, AL 36606

CHRIS HARLE
251.234.7232
chris@white-spunnersrealty.com

RETAIL PROPERTY FOR LEASE

AVAILABLE SPACES

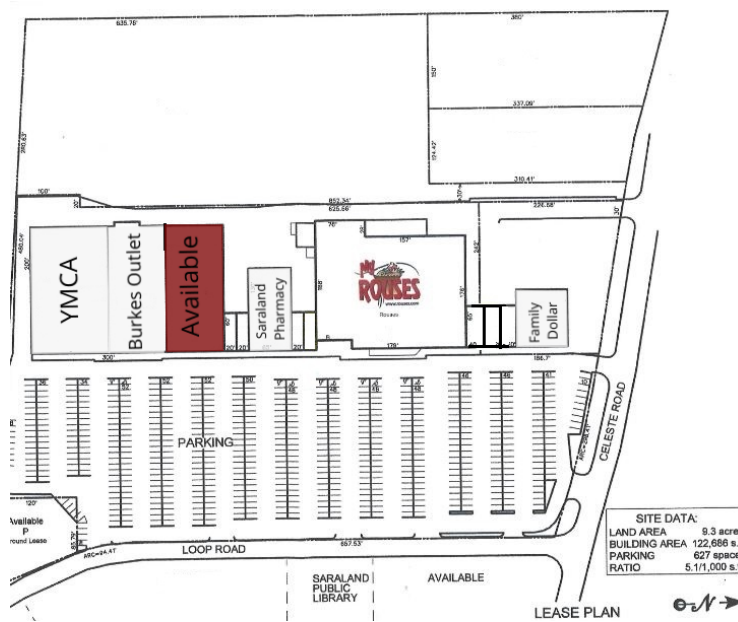
100 Saraland Loop | Saraland, AL 36571

LEASE TYPE | NNN

TOTAL SPACE | 20,000 SF

LEASE TERM | Negotiable

LEASE RATE | Negotiable



UNAVAILABLE AVAILABLE

SUITE	TENANT	SIZE	TYPE	RATE	DESCRIPTION
88	YMCA	20,000 SF	NNN	Negotiable	-
96	Burkes Outlet	25,650 SF	NNN	Negotiable	-
Suite 100	Available	20,000 SF	NNN	Negotiable	-
106	Saraland Pharmacy	4,225 SF	NNN	Negotiable	-
124	Family Dollar	8,000 SF	NNN	Negotiable	-

White-Spunner Realty | 251.471.1000 | 3201 Dauphin Street, Suite A | Mobile, AL 36606

CHRIS HARLE
251.234.7232
chris@white-spunnersrealty.com

LOCATION MAPS

100 Saraland Loop | Saraland, AL 36571

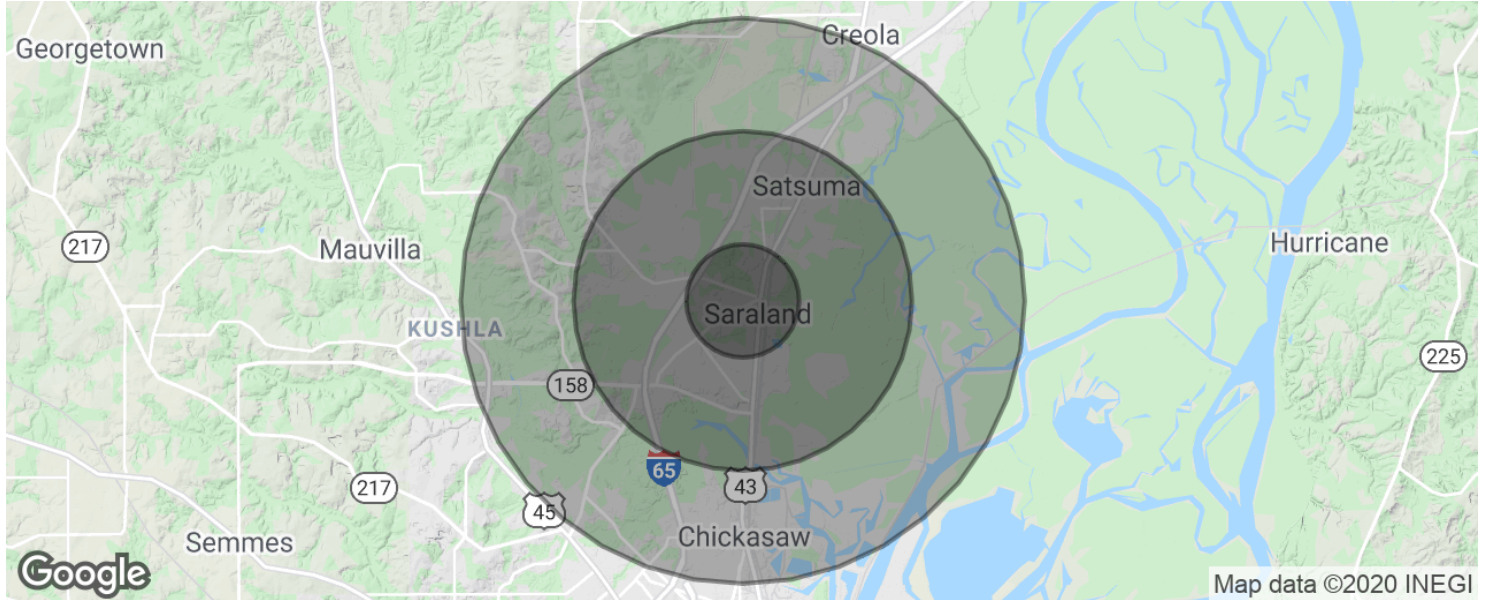


White-Spunner Realty | 251.471.1000 | 3201 Dauphin Street, Suite A | Mobile, AL 36606

CHRIS HARLE
251.234.7232
chris@white-spunnersrealty.com

DEMOGRAPHICS MAP & REPORT

100 Saraland Loop | Saraland, AL 36571



POPULATION	1 MILE	3 MILES	5 MILES
Total population	4,403	16,544	30,878
Median age	37.4	39.3	37.8
Median age (Male)	36.7	38.5	36.8
Median age (Female)	38.2	40.1	39.1
HOUSEHOLDS & INCOME	1 MILE	3 MILES	5 MILES
Total households	1,593	6,198	11,685
# of persons per HH	2.8	2.7	2.6
Average HH income	\$52,219	\$54,287	\$50,648
Average house value	\$99,661	\$111,237	\$117,225

* Demographic data derived from 2010 US Census

White-Spunner Realty | 251.471.1000 | 3201 Dauphin Street, Suite A | Mobile, AL 36606

CHRIS HARLE
251.234.7232
chris@white-spunnersrealty.com