



NEW PRICE: NEW OFFICE WAREHOUSE W/ FIRST CLASS FINISHES

7651 REALTORS AVE BATON ROUGE, LA 70806



OFFERED: FOR LEASE

LEASE RATE: \$11.00 SF/YR (MG) (\$1,946/MO)

2,123 SF | 1 SUITE AVAILABLE

- New construction + First-class finishes
- 15' grade-level powered roll-up doors
- All suites contain 356 SF office space
- 0.3 miles from Florida Blvd / Lobdell Blvd intersection

CONTACT:

GEORGE BONVILLAIN, J.D.
225.659.8654

800.895.9329 | elifinrealty.com | February 2021
640 Main St, Suite A, Baton Rouge, LA 70801
Broker of Record, Mathew Laborde; Licensed by the Louisiana Real Estate Commission and the Mississippi Real Estate Commission. This information has been secured from sources we believe to be reliable, but we make no representations or warranties, expressed or implied, as to the accuracy of the information. References to square footage or age are approximate. Buyer must verify the information and bears all risk for any inaccuracies.

OFFERING SUMMARY



PROPERTY SUMMARY

- This brand-new construction located just off Lobdell Blvd combines versatile warehouse space with a first-class office suite.
- The building is subdivided into 5 suites.
- Suites feature 15' grade-level powered roll-up doors.
- Each suite contains 356 SF of office space comprised of an office, kitchenette, and restroom.
- Built with the highest level of quality by Bernhard Normand Construction, this office/warehouse property allows tenants to impress clients while maintaining operations.
- Gross lease. Landlord covers taxes, insurance, and exterior maintenance.
- Tenant covers pro-rata share of grounds maintenance and trash removal (billed quarterly), Electricity/Water (all separately metered)

LOCATION SUMMARY

- Realtors Ave and Kornmeyer Plaza Dr connect to create a small office/industrial sector near the corner of Lobdell Blvd and Florida Blvd near Bon Carre Technology Center
- The property sits at the end of Realtors Ave and has multiple access points.

CONTACT:

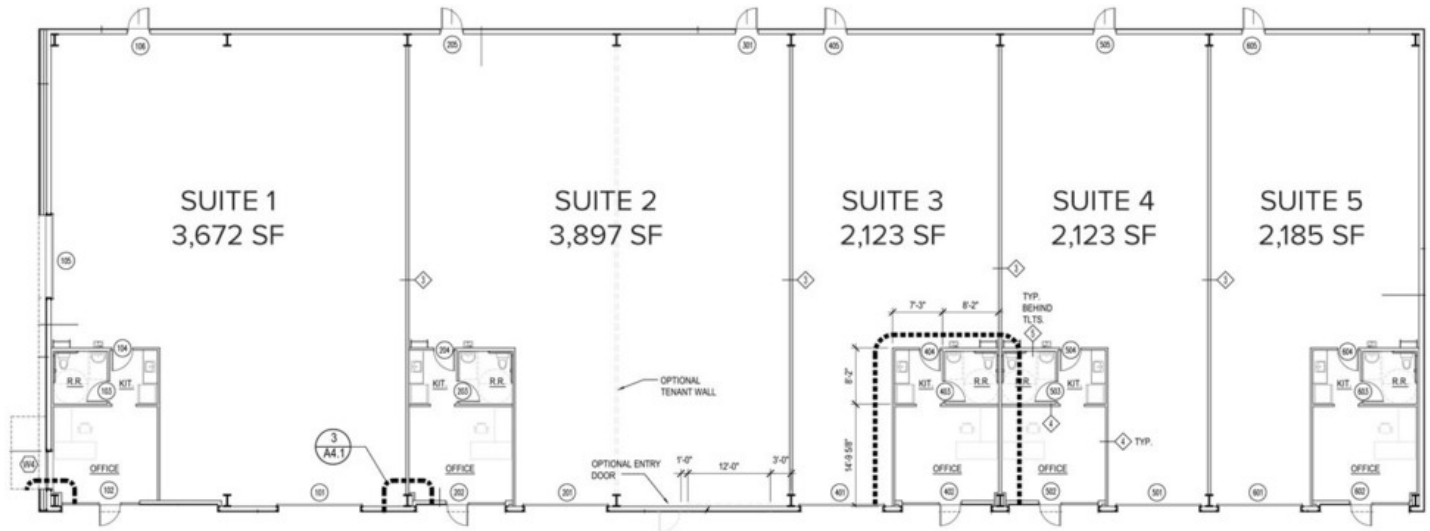
GEORGE BONVILLAIN, J.D.
225.659.8654

800.895.9329 | elifinrealty.com | February 2021
640 Main St, Suite A, Baton Rouge, LA 70801

Broker of Record, Mathew Laborde; Licensed by the Louisiana Real Estate Commission and the Mississippi Real Estate Commission. This information has been secured from sources we believe to be reliable, but we make no representations or warranties, expressed or implied, as to the accuracy of the information. References to square footage or age are approximate. Buyer must verify the information and bears all risk for any inaccuracies.

AVAILABLE SPACES + FLOORPLANS

7651 REALTORS AVE 14,000 SF TOTAL



LEASE INFORMATION

Lease Type:	Gross Lease	Lease Term:	Negotiable
Total Space:	2,123 SF	Lease Rate:	\$11.00 SF/yr

AVAILABLE SPACES

SUITE	TENANT	SIZE (SF)	LEASE TYPE	LEASE RATE	DESCRIPTION
Suite 3	Available	2,123 SF	Modified Gross	\$11.00 SF/yr	\$1,946 / month

CONTACT:

GEORGE BONVILLAIN, J.D.
225.659.8654

800.895.9329 | elifinrealty.com | February 2021
640 Main St, Suite A, Baton Rouge, LA 70801
Broker of Record, Mathew Laborde; Licensed by the Louisiana Real Estate Commission and the Mississippi Real Estate Commission. This information has been secured from sources we believe to be reliable, but we make no representations or warranties, expressed or implied, as to the accuracy of the information. References to square footage or age are approximate. Buyer must verify the information and bears all risk for any inaccuracies.

ADDITIONAL PHOTOS - SUITE 1

**CONTACT:**

GEORGE BONVILLAIN, J.D.
225.659.8654

800.895.9329 | elifinrealty.com | February 2021

640 Main St, Suite A, Baton Rouge, LA 70801

Broker of Record, Mathew Laborde; Licensed by the Louisiana Real Estate Commission and the Mississippi Real Estate Commission. This information has been secured from sources we believe to be reliable, but we make no representations or warranties, expressed or implied, as to the accuracy of the information. References to square footage or age are approximate. Buyer must verify the information and bears all risk for any inaccuracies.

ADDITIONAL PHOTOS - SUITE 1

**CONTACT:**

GEORGE BONVILLAIN, J.D.
225.659.8654

800.895.9329 | elifinrealty.com | February 2021
640 Main St, Suite A, Baton Rouge, LA 70801

Broker of Record, Mathew Laborde; Licensed by the Louisiana Real Estate Commission and the Mississippi Real Estate Commission. This information has been secured from sources we believe to be reliable, but we make no representations or warranties, expressed or implied, as to the accuracy of the information. References to square footage or age are approximate. Buyer must verify the information and bears all risk for any inaccuracies.

AERIAL PHOTOS

**CONTACT:**

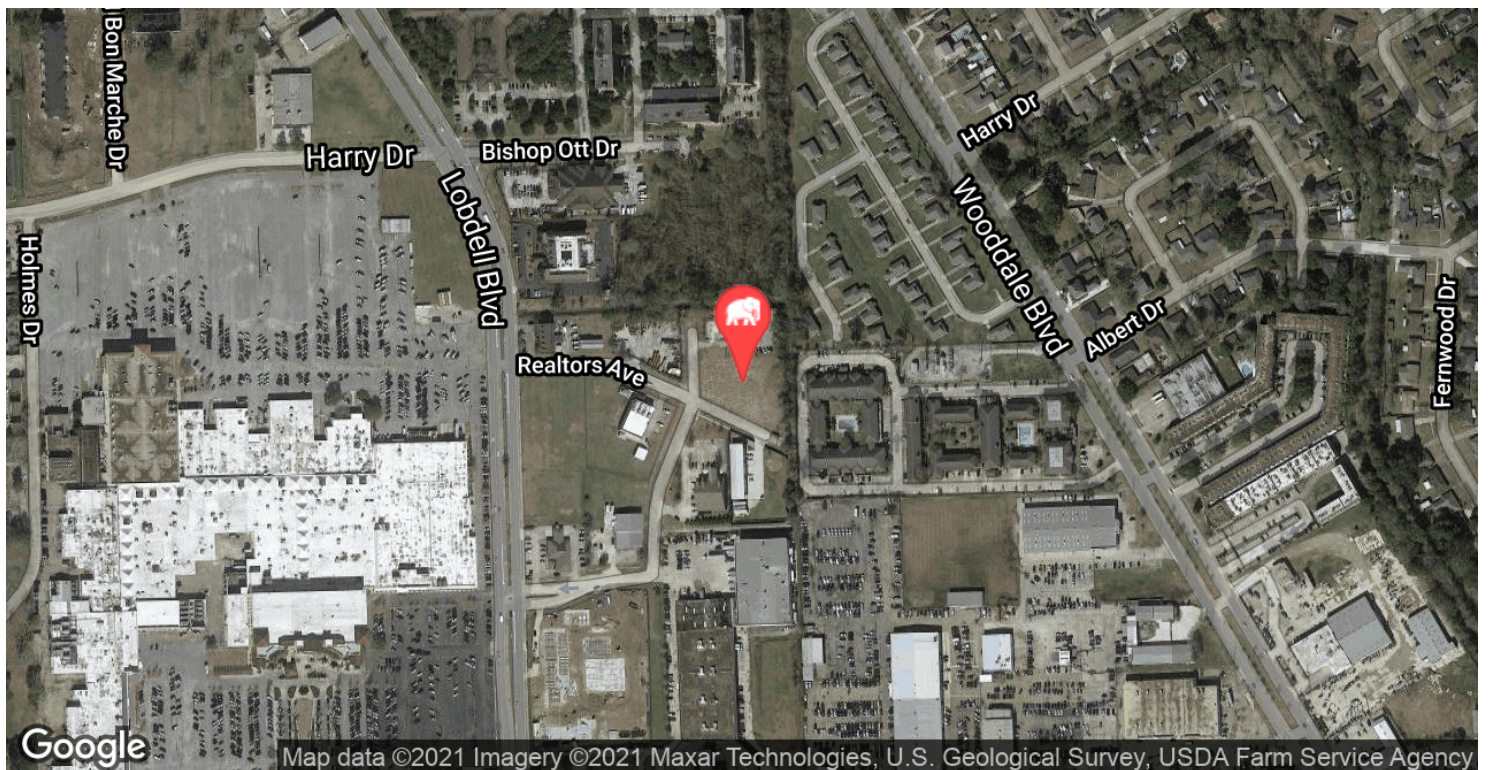
GEORGE BONVILLAIN, J.D.
225.659.8654

800.895.9329 | elifinrealty.com | February 2021

640 Main St, Suite A, Baton Rouge, LA 70801

Broker of Record, Mathew Laborde; Licensed by the Louisiana Real Estate Commission and the Mississippi Real Estate Commission. This information has been secured from sources we believe to be reliable, but we make no representations or warranties, expressed or implied, as to the accuracy of the information. References to square footage or age are approximate. Buyer must verify the information and bears all risk for any inaccuracies.

LOCATION MAPS



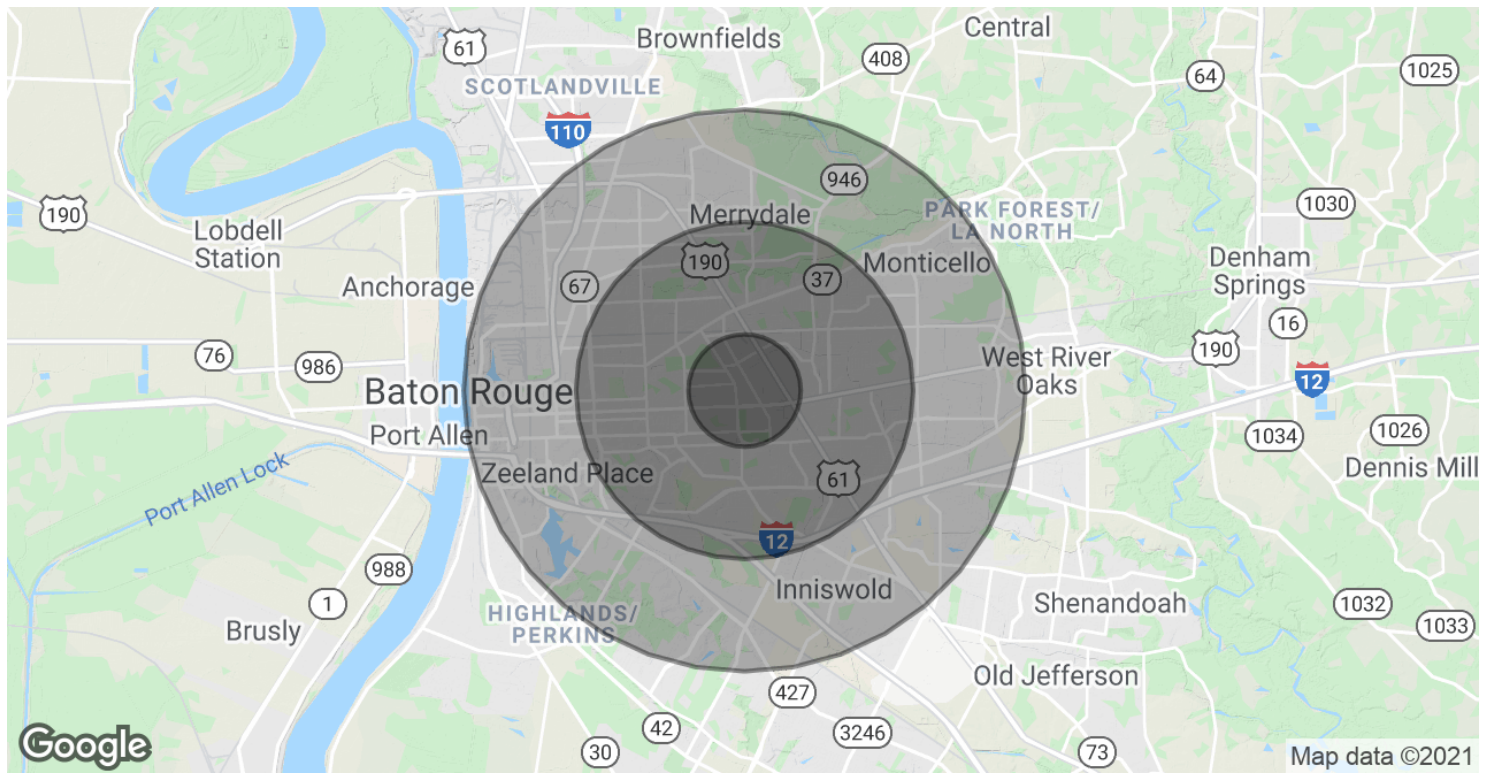
CONTACT:

GEORGE BONVILLAIN, J.D.
225.659.8654

800.895.9329 | elifinrealty.com | February 2021

640 Main St, Suite A, Baton Rouge, LA 70801
Broker of Record, Mathew Laborde; Licensed by the Louisiana Real Estate Commission and the Mississippi Real Estate Commission. This information has been secured from sources we believe to be reliable, but we make no representations or warranties, expressed or implied, as to the accuracy of the information. References to square footage or age are approximate. Buyer must verify the information and bears all risk for any inaccuracies.

DEMOGRAPHICS MAP & REPORT



POPULATION

	1 MILE	3 MILES	5 MILES
Total Population	9,281	74,973	214,631
Average age	32.5	35.1	34.1
Average age (Male)	29.7	32.1	31.3
Average age (Female)	36.5	37.5	36.6

HOUSEHOLDS & INCOME

	1 MILE	3 MILES	5 MILES
Total households	3,984	30,404	84,572
# of persons per HH	2.3	2.5	2.5
Average HH income	\$45,010	\$60,192	\$59,428
Average house value	\$181,707	\$245,182	\$224,456

* Demographic data derived from 2010 US Census

CONTACT:

GEORGE BONVILLAIN, J.D.
225.659.8654

800.895.9329 | elifinrealty.com | February 2021
640 Main St, Suite A, Baton Rouge, LA 70801
Broker of Record, Mathew Laborde; Licensed by the Louisiana Real Estate Commission and the Mississippi Real Estate Commission. This information has been secured from sources we believe to be reliable, but we make no representations or warranties, expressed or implied, as to the accuracy of the information. References to square footage or age are approximate. Buyer must verify the information and bears all risk for any inaccuracies.