

# 10.19 ACRES FOR SALE NEAR SOUTHEASTERN CAMPUS



## OFFERING SUMMARY

Sale Price: \$90,000 | \$0.20/SF

Lot Size: 10.19 Acres

Price / SF: \$0.20

## PROPERTY OVERVIEW

10 acres of land for sale 5 minutes away from Southeastern University campus and near several major roadways.

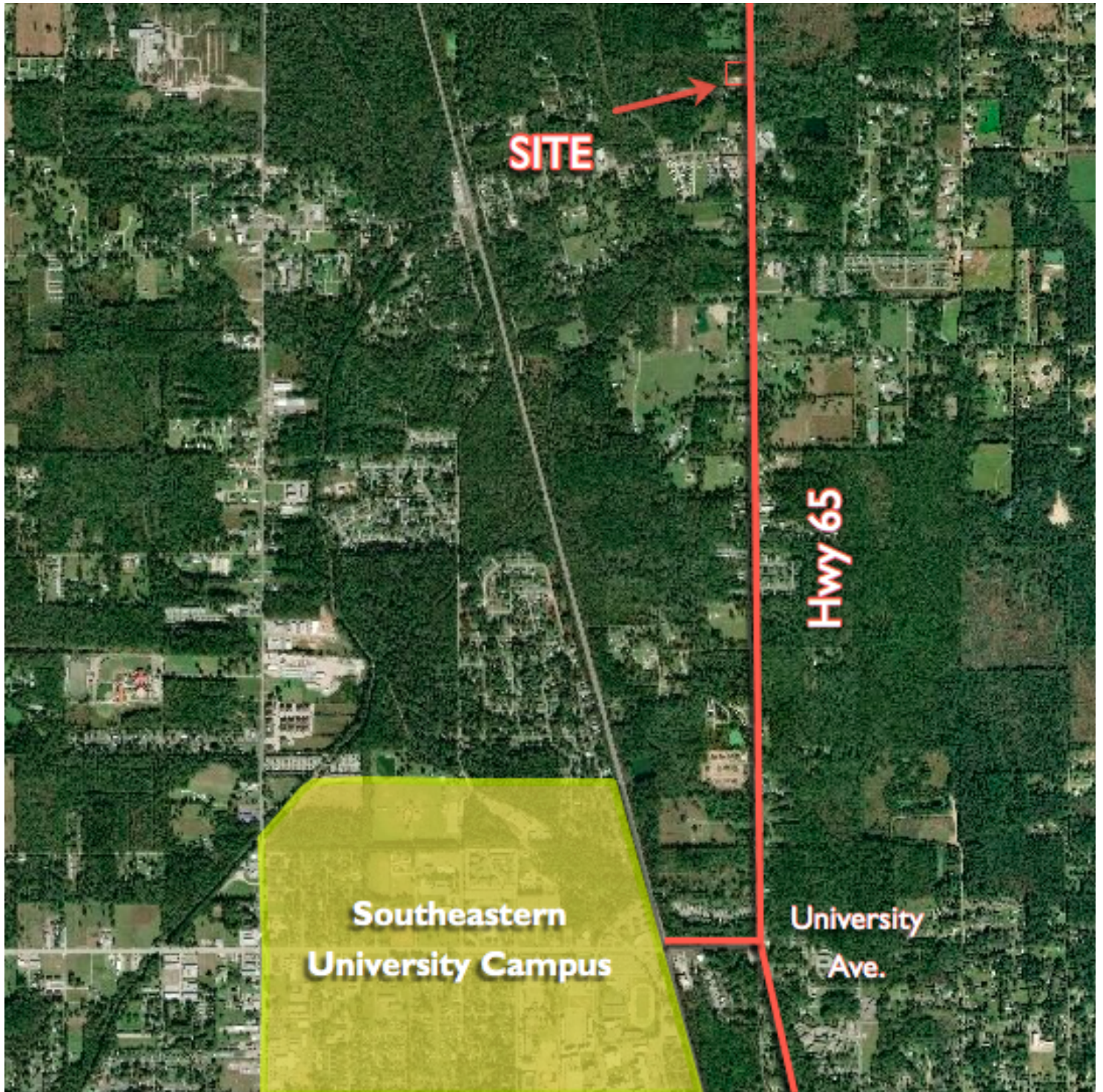
Property is partially cleared with +/- 7 acres of wooded area.

Seller is highly motivated and all offers are strongly encouraged.

## PROPERTY HIGHLIGHTS

- 300 feet of frontage on Hwy 65
- Property is partially cleared with +/- 7 acres of wooded area.
- Seller is highly motivated and all offers are strongly encouraged.

# 10.19 ACRES FOR SALE NEAR SOUTHEASTERN CAMPUS

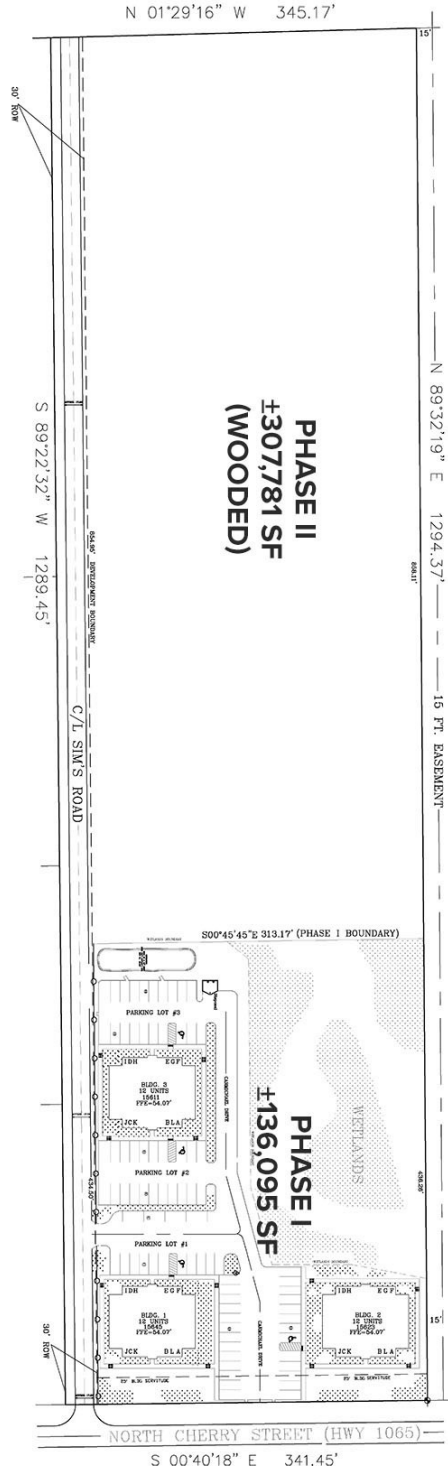


George Bonvillain, J.D. (C) 337.302.0091

 **ELIFIN** 225.659.8654 | elifinrealty.com  
640 Main St, Suite A, Baton Rouge, LA 70801

Broker of Record, Mathew Laborde; Licensed by the Louisiana Real Estate Commission and the Mississippi Real Estate Commission. This information has been secured from sources we believe to be reliable, but we make no representations or warranties, expressed or implied, as to the accuracy of the information. References to square footage or age are approximate. Buyer must verify the information and bears all risk for any inaccuracies.

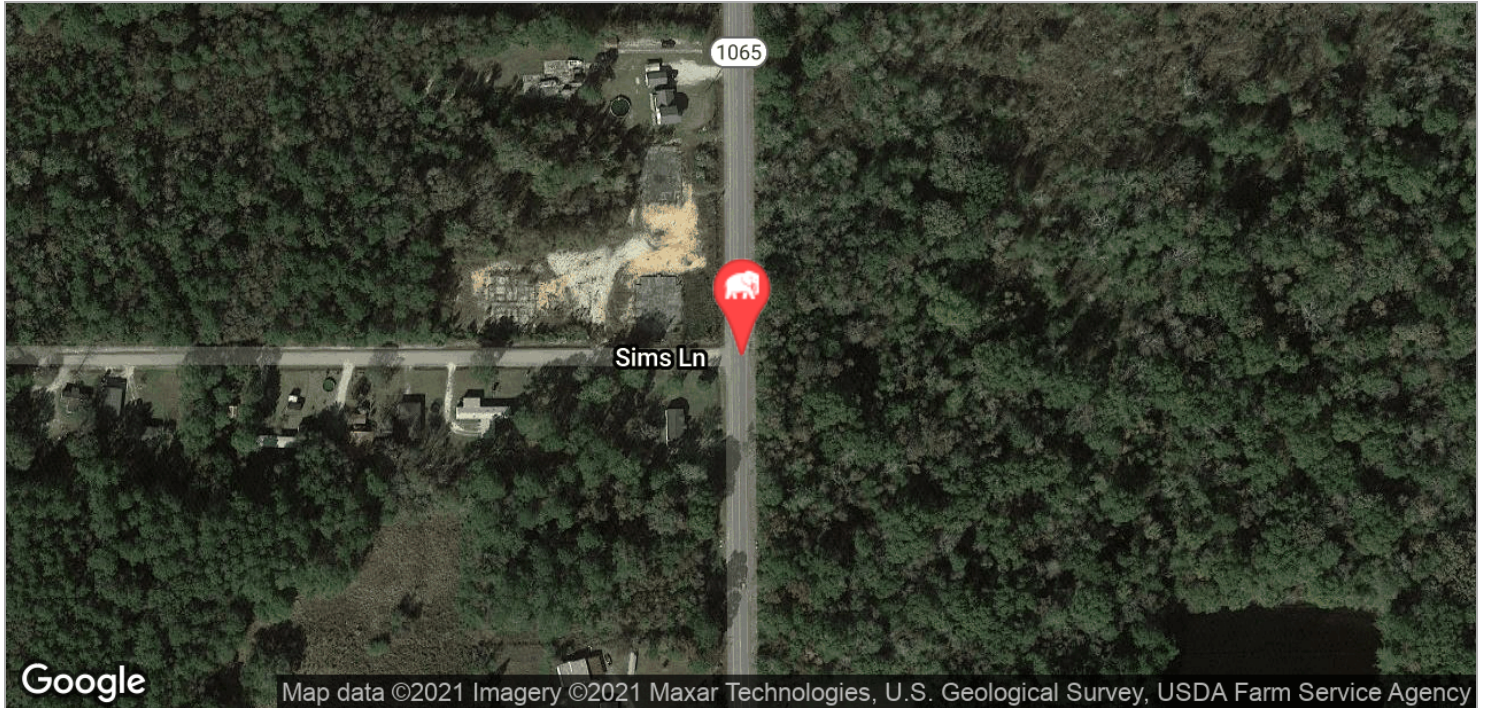
# 10.19 ACRES FOR SALE NEAR SOUTHEASTERN CAMPUS



George Bonvillain, J.D. (C) 337.302.0091

**ELIFIN** 225.659.8654 | elifinrealty.com  
 640 Main St, Suite A, Baton Rouge, LA 70801

# 10.19 ACRES FOR SALE NEAR SOUTHEASTERN CAMPUS

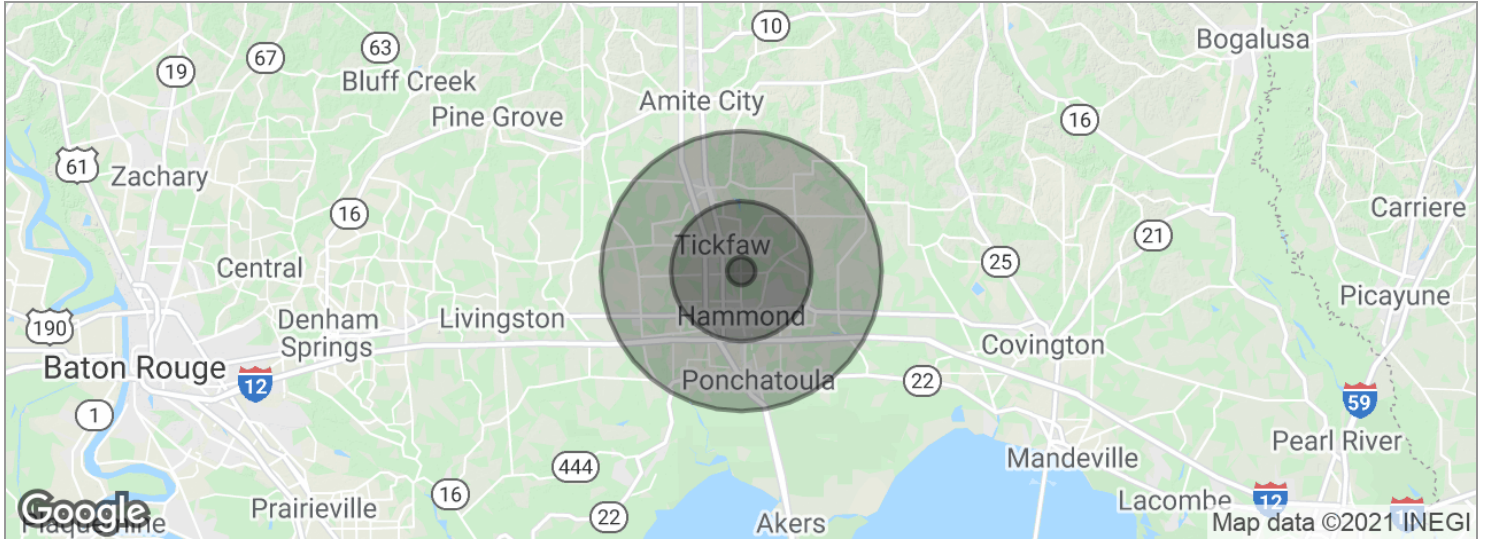


George Bonvillain, J.D. (C) 337.302.0091

 **ELIFIN** 225.659.8654 | elifinrealty.com  
640 Main St, Suite A, Baton Rouge, LA 70801

Broker of Record, Mathew Laborde; Licensed by the Louisiana Real Estate Commission and the Mississippi Real Estate Commission. This information has been secured from sources we believe to be reliable, but we make no representations or warranties, expressed or implied, as to the accuracy of the information. References to square footage or age are approximate. Buyer must verify the information and bears all risk for any inaccuracies.

# 10.19 ACRES FOR SALE NEAR SOUTHEASTERN CAMPUS



POPULATION	1 MILE	5 MILES	10 MILES
Total population	1,588	38,611	90,912
Median age	27.7	31.7	33.1
Median age (Male)	29.6	29.7	31.9
Median age (Female)	26.2	32.8	33.9
HOUSEHOLDS & INCOME	1 MILE	5 MILES	10 MILES
Total households	509	14,351	33,658
# of persons per HH	3.1	2.7	2.7
Average HH income	\$53,382	\$53,933	\$54,931
Average house value		\$155,896	\$165,974

\* Demographic data derived from 2010 US Census