



FIRST WESTERN PROPERTIES

Adding value to every transaction

1205 W. Adams, Chicago, IL 60607 • <http://1stwesternproperties.com>
Office 773.545.2000 Fax: 773.545.4067 E-mail: fwp@1stwesternproperties.com

For Sale:

Property Type:
Land

Price:
\$360,000

Site Highlights

Located on Rt-30

Current Zoning is B3

Surrounded by McDonald's,
Walgreens & Family Health
Center

Uses: Medical Offices, Sports
Facility, Auto Shop, Hotel,
Retail, etc

Strong Growth Area With
Excellent Neighborhoods

Demographics:

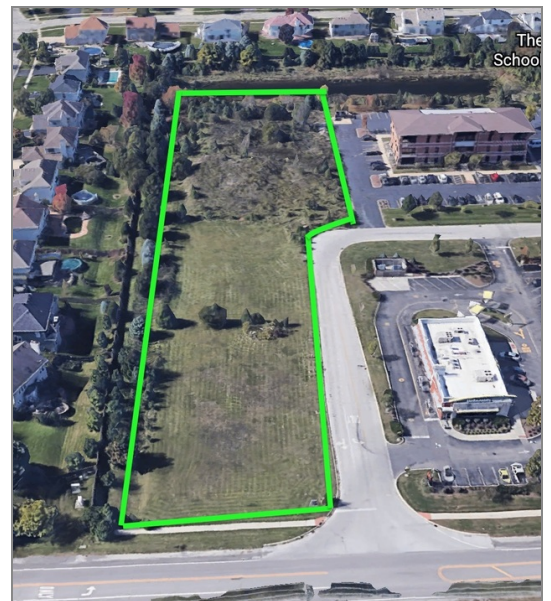
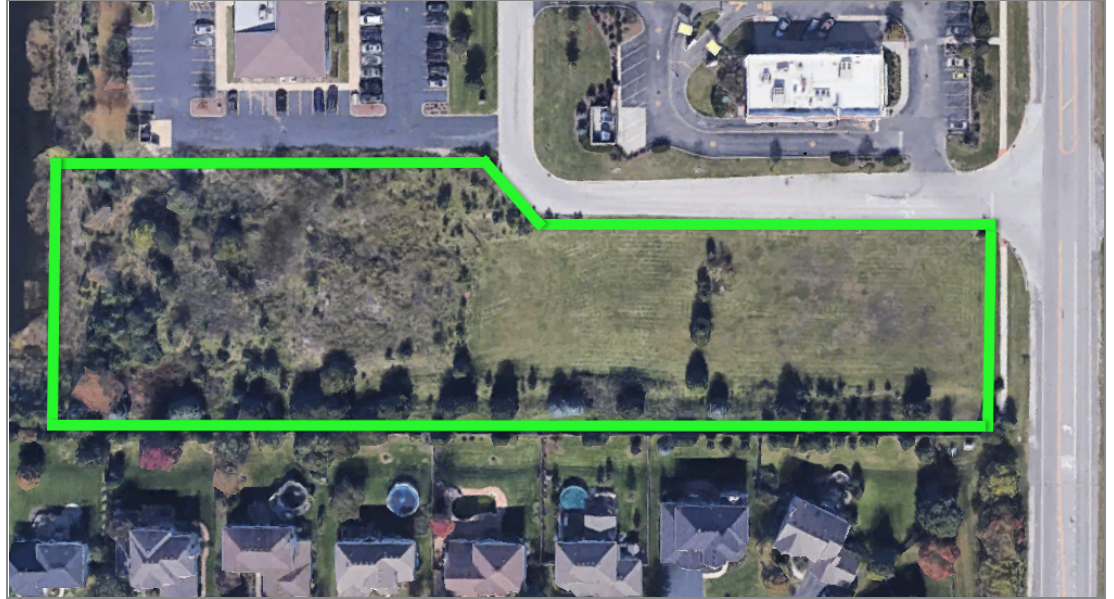
1 Mile
Population 4,258
Households 1,245
Avg. HH Inc. \$113,172

3 Miles
Population 34,293
Households 10,064
Avg. HH Inc. \$114,686

5 Miles
Population 99,920
Households 29,279
Avg. HH Inc. \$116,276

2.7 Acres Of Land In Plainfield IL

13600 US 30 Plainfield, IL 60544



MELSI BIFSHA // 773.355.4799 // mel@1stwesternproperties.com

PAUL TSAKIRIS // 773.355.4780 // paul@1stwesternproperties.com

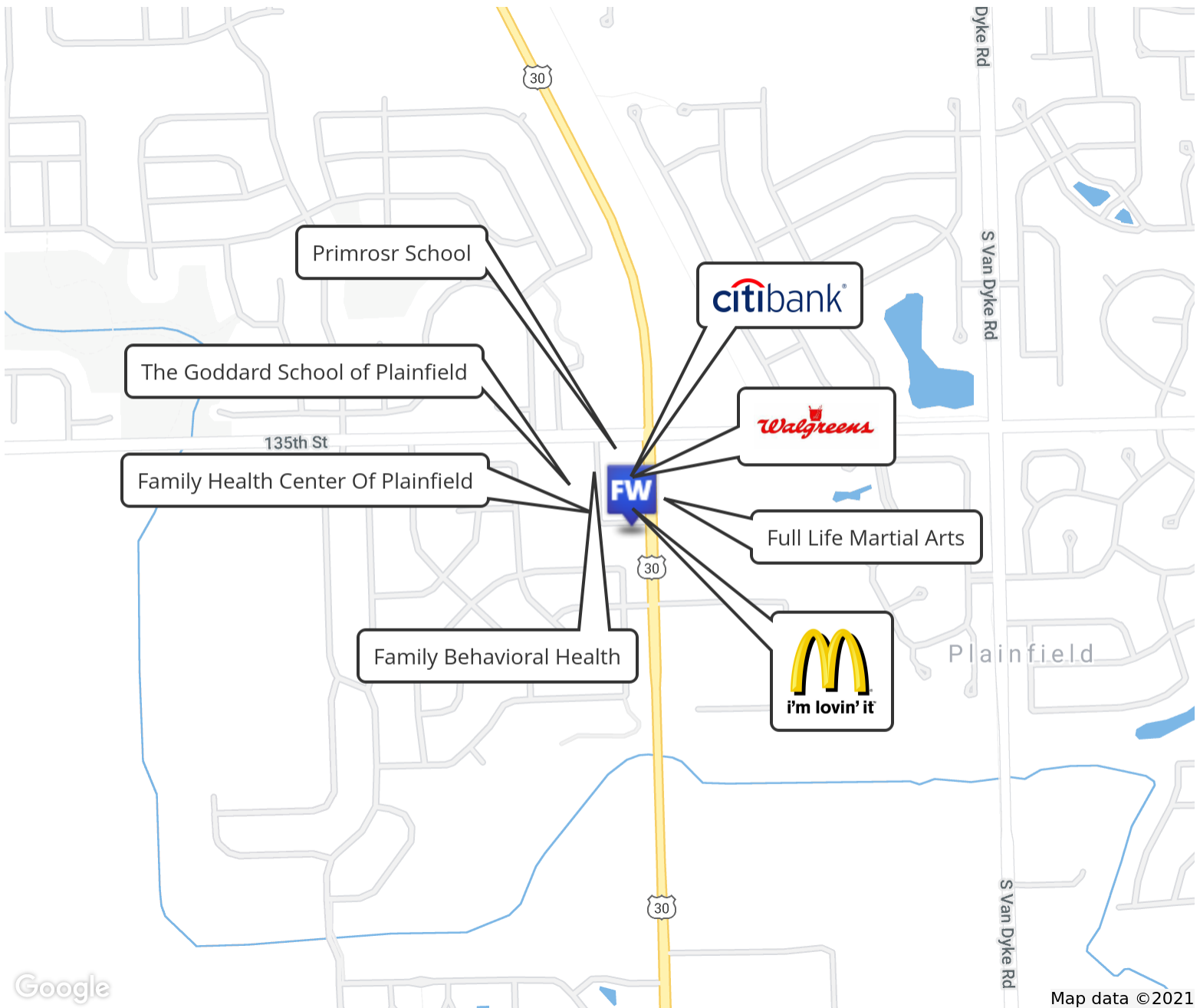


FIRST WESTERN PROPERTIES

Adding value to every transaction

1205 W. Adams, Chicago, IL 60607 • <http://1stwesternproperties.com>
Office 773.545.2000 Fax: 773.545.4067 E-mail: fwp@1stwesternproperties.com

» [Retailer Map](#)



Google

Map data ©2021

FIRST WESTERN
PROPERTIES
Adding value to every transaction

MELSI BIFSHA // 773.355.4799 // mel@1stwesternproperties.com

PAUL TSAKIRIS // 773.355.4780 // paul@1stwesternproperties.com

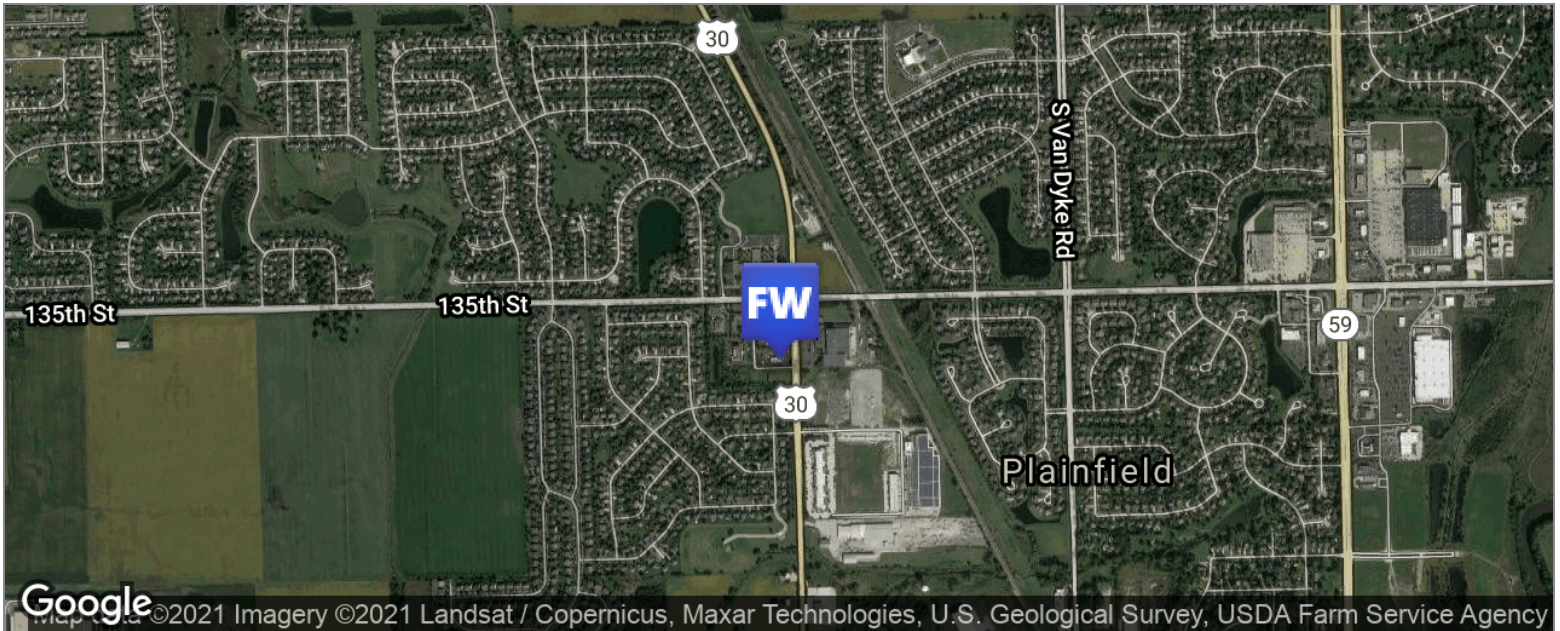


FIRST WESTERN PROPERTIES

Adding value to every transaction

1205 W. Adams, Chicago, IL 60607 • <http://1stwesternproperties.com>
Office 773.545.2000 Fax: 773.545.4067 E-mail: fwp@1stwesternproperties.com

» Aerial & Location Maps



**FIRST WESTERN
PROPERTIES**
Adding value to every transaction

MELSI BIFSHA // 773.355.4799 // mel@1stwesternproperties.com

PAUL TSAKIRIS // 773.355.4780 // paul@1stwesternproperties.com