



GOLD AND COMPANY, LLC



806 Race Rd. Baltimore, MD 21221

Gold And Company, LLC

**5601 Newbury St.
Baltimore, MD 21209**

**Jim Chivers
jim@goldcommercial.net
443.928.7522 cell**

Office: 410.578.1300

www.goldcommercial.net

- **Industrial Property FOR SALE with
Outside Contractors Storage**
- **+/- 13,000 sf Building**
- **2.14 Acres**
- **Baltimore County**
- **MH-IM Zoning**
- **Drive-In Warehouse**
- **Easy Access to Pulaski Hwy / I-695**
- **Nicely Appointed Office Buildout**

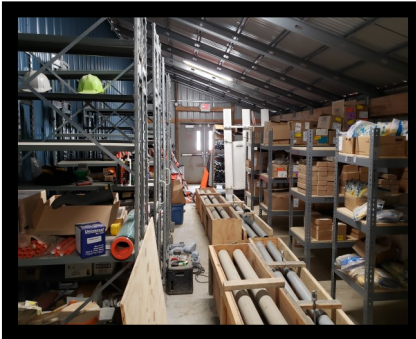


Gold And Company

Commercial Real Estate in the Baltimore Metropolitan Area

806 Race Rd. Baltimore, MD 21221

Property Pictures



Jim Chivers
Gold And Company, LLC
5601 Newbury St.
Baltimore, MD 21209

www.goldcommercial.net
410.578.1300

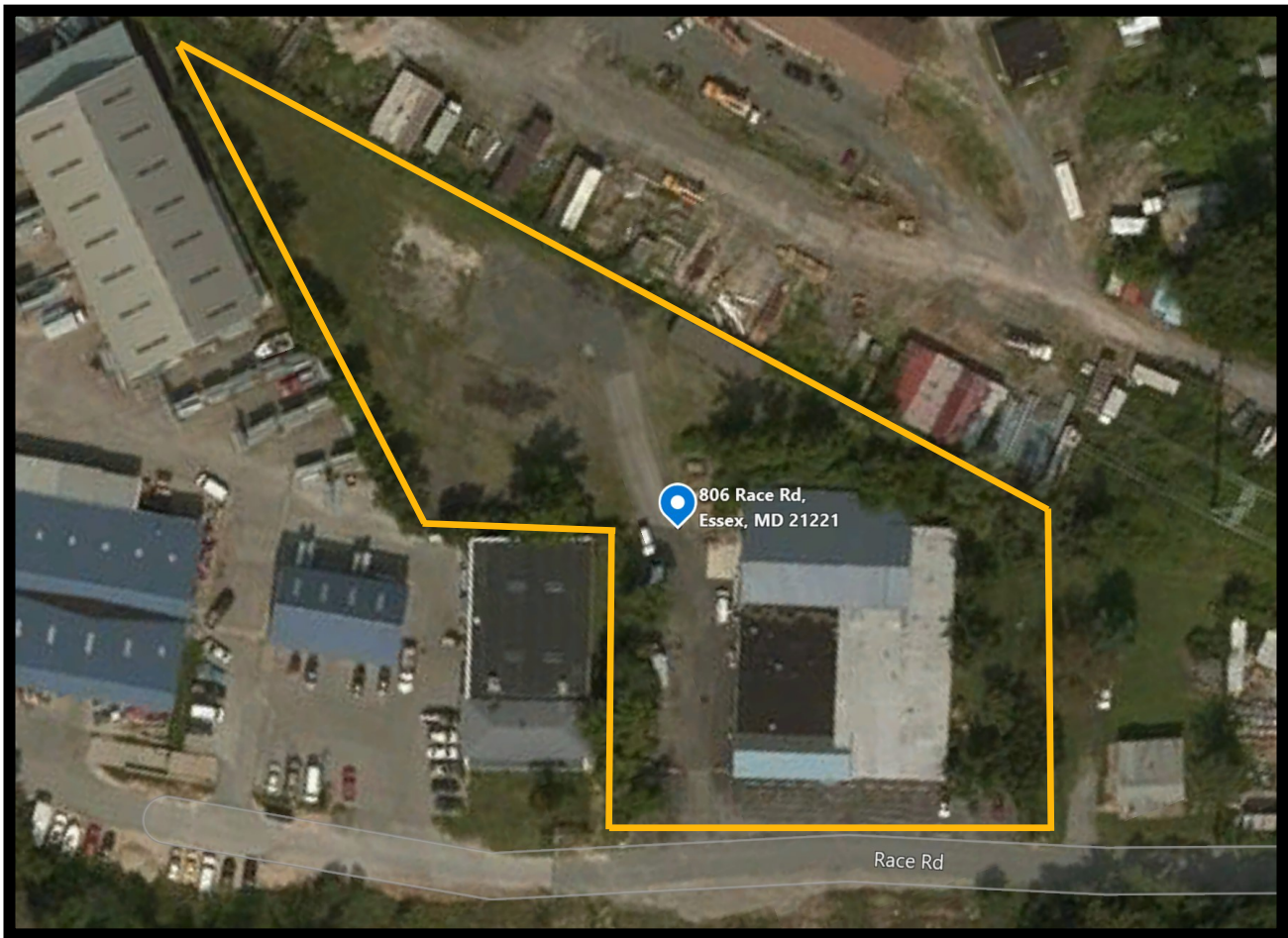


Gold And Company

Commercial Real Estate in the Baltimore Metropolitan Area

806 Race Rd. Baltimore, MD 21221

Aerial View



Jim Chivers
Gold And Company, LLC
5601 Newbury St.
Baltimore, MD 21209

410.578.1300 (Office)
410.578.0200 (Fax)
www.goldcommercial.net

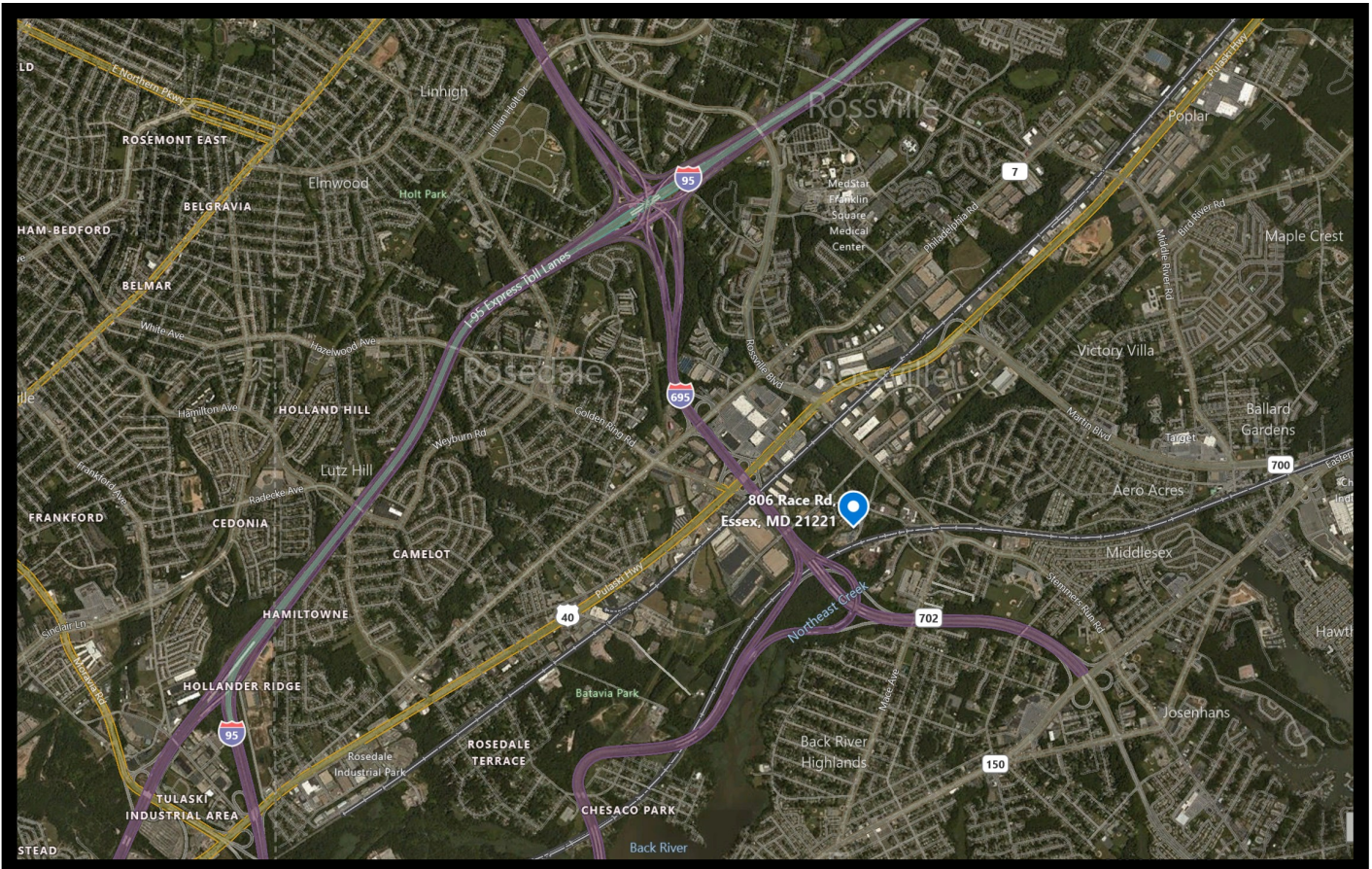


Gold And Company

Commercial Real Estate in the Baltimore Metropolitan Area

806 Race Rd. Baltimore, MD 21221

Map



Jim Chivers
Gold And Company, LLC
5601 Newbury St.
Baltimore, MD 21209

410.578.1300 (Office)
410.578.0200 (Fax)
www.goldcommercial.net