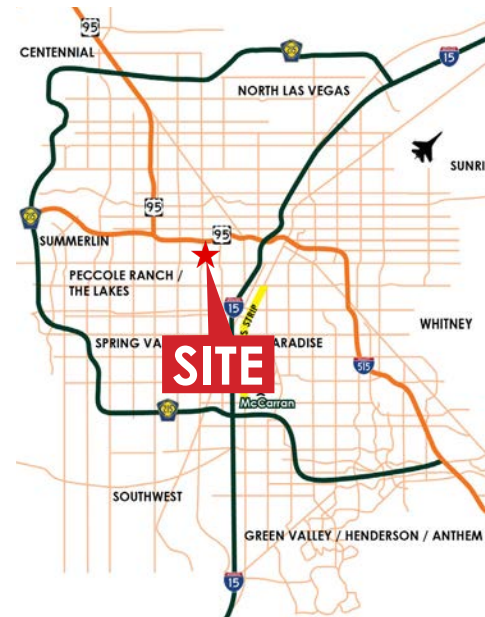




PROPERTY HIGHLIGHTS

The complex is situated in a very active business area featuring extensive services, many within walking distance. Some of the surrounding businesses are Wells Fargo, Denny's, U-Haul, Smith's, Capriotti's, Del Taco, Citibank, LVAC, and Kindred Hospital, as well as a number of automotive dealerships. Freeway access is via the Sahara Avenue on-ramp to Interstate 15 about 2 miles to the East, as well as direct access to the Las Vegas Strip directly down Sahara Avenue.

- Excellent single story medical office
- Direct exposure on Sahara Avenue
- Ample parking
- Active digital sign



DEMOGRAPHICS

	2020	1 MILE	3 MILE	5 MILE
POPULATION				
Estimated Population		23,233	170,666	472,314
Estimated Households		7,934	63,301	183,619
INCOME				
Est. Median HH Income	\$40,099	\$42,004	\$43,581	
Est. Average HH Income	\$57,430	\$61,105	\$64,375	

Source: STDB

Travis Laub
Associate
702-342-0660
travisl@suncommercialre.com
NV Lic # S.0076896

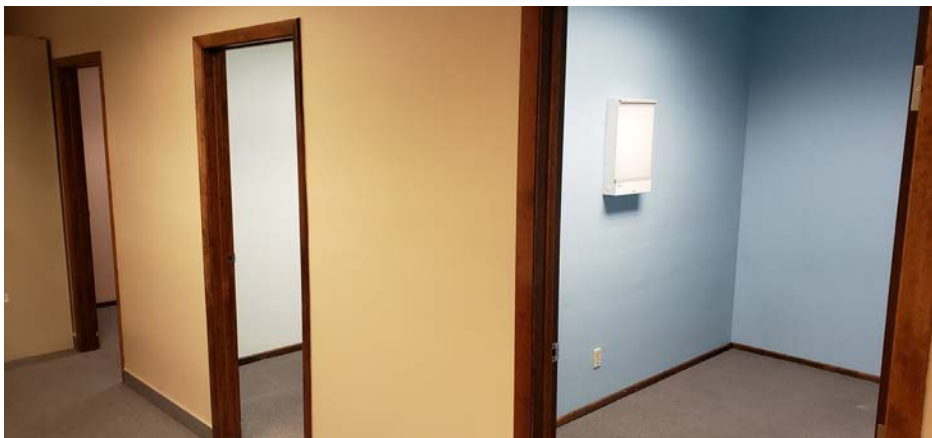
Pete Janemark, CCIM
Vice President
702-342-0660
petej@suncommercialre.com
NV Lic # S.0076731

6140 Brent Thurman Way, Suite 140
Las Vegas, NV 89148
Main 702-968-7300
Fax 702-968-7301
www.suncommercialre.com

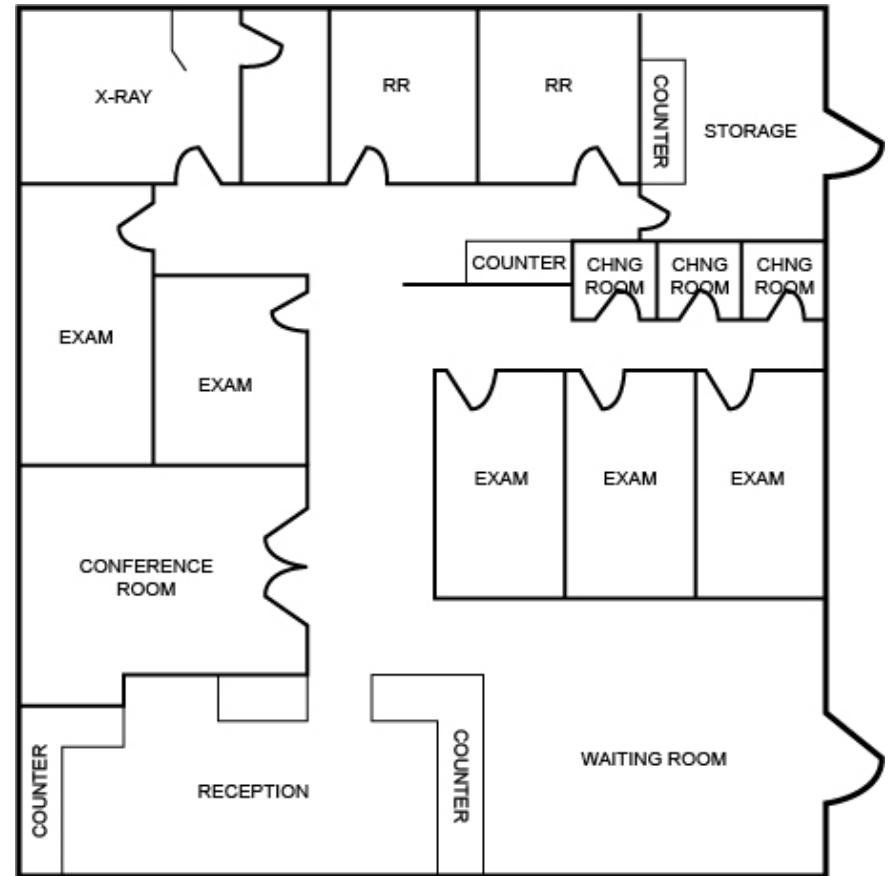
Exclusively listed by Sun Commercial Real Estate, Inc.

5320 W. Sahara Avenue | Suite 1

±2,000 Rentable Square Feet



This medical space features a large reception area and waiting room, 5 treatment rooms, 3 changing rooms, conference room, 3 changing rooms, private office, x-ray (including modern machine), and 2 restrooms. offices or exam rooms, a break room, two restrooms, and a large storage room.



*Not to Scale

5320 W. SAHARA AVENUE
LAS VEGAS, NEVADA 89145

Travis Laub
Associate
702-342-0660
travisl@suncommercialre.com
NV Lic # S.0076896

Pete Janemark, CCIM
Vice President
702-342-0660
petej@suncommercialre.com
NV Lic # S.0076731