

THE ATHLON

1118 Euclid Avenue, Cleveland, Ohio 44115

RETAIL & OFFICE SPACE FOR LEASE



THE ATHLON

1118 Euclid Avenue, Cleveland, Ohio 44115



AVAILABLE RETAIL SPACE

Unit 101 1,155 SF - 8,527 SF

COMMENTS

- Well positioned on the active Euclid corridor between E 9th Street and Playhouse Square
- Historic building with gorgeous window line
- Over 140 ft of frontage along Euclid Avenue
- 160 residential units above provide a built-in customer base in addition to the 100,000+ employees and nearly 20,000 residents in Downtown Cleveland



AVAILABLE OFFICE SPACE

Unit 701 9,829 SF on the 7th floor

COMMENTS

- Open white box condition
- Flexible layout options
- Strategically located between the Playhouse Square and Financial Districts
- Historic details with modern finishes and large window line



[Click Here to View our Virtual Tour](#)

THE ATHLON

1118 Euclid Avenue, Cleveland, Ohio 44115



PROPERTY PHOTOS: RETAIL SPACE

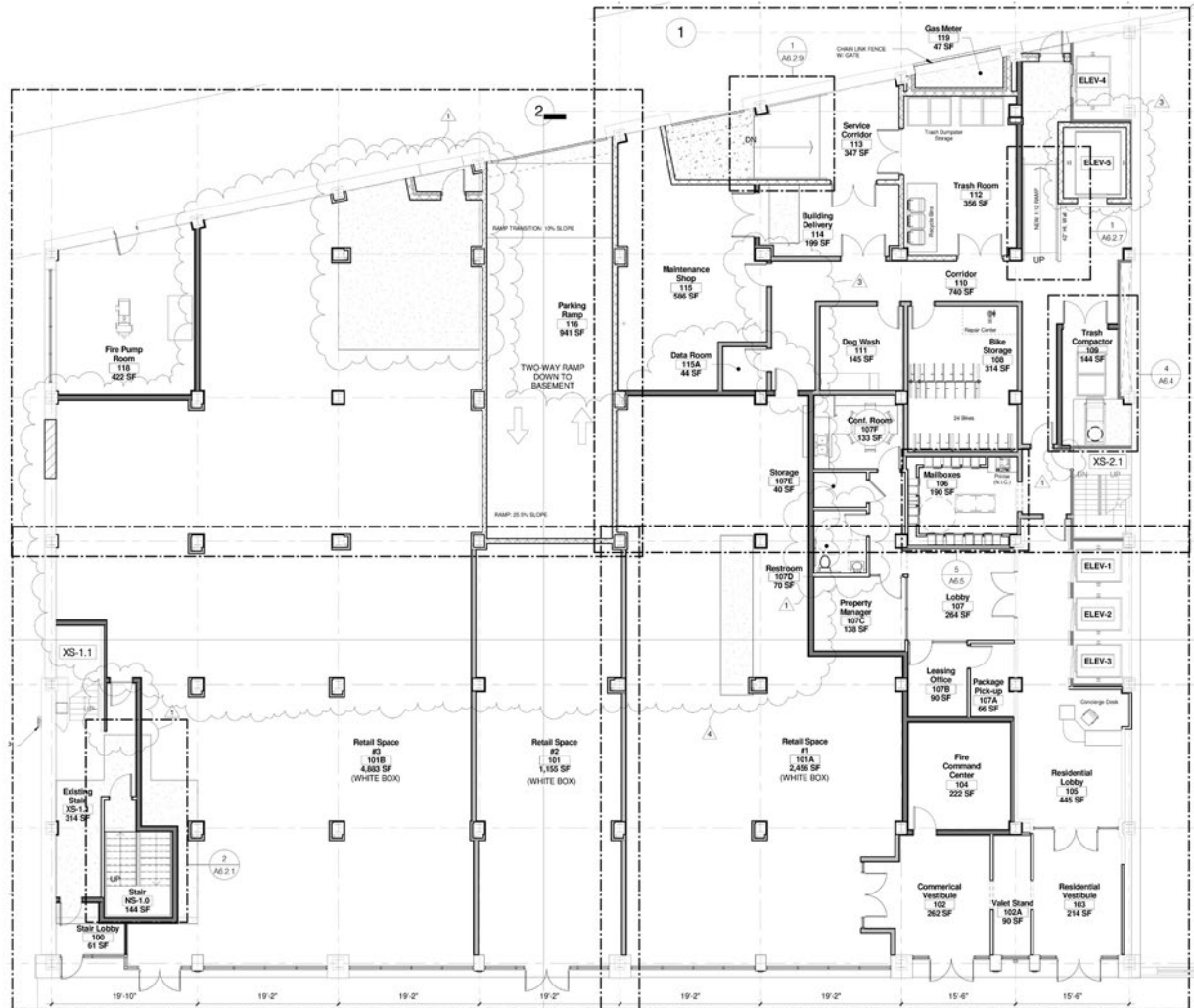


THE ATHLON

1118 Euclid Avenue, Cleveland, Ohio 44115



FIRST FLOOR RETAIL SPACE: 1,155 SF - 8,527 SF



Click Here to View our Virtual Tour

THE ATHLON

1118 Euclid Avenue, Cleveland, Ohio 44115



PROPERTY PHOTOS: OFFICE SPACE

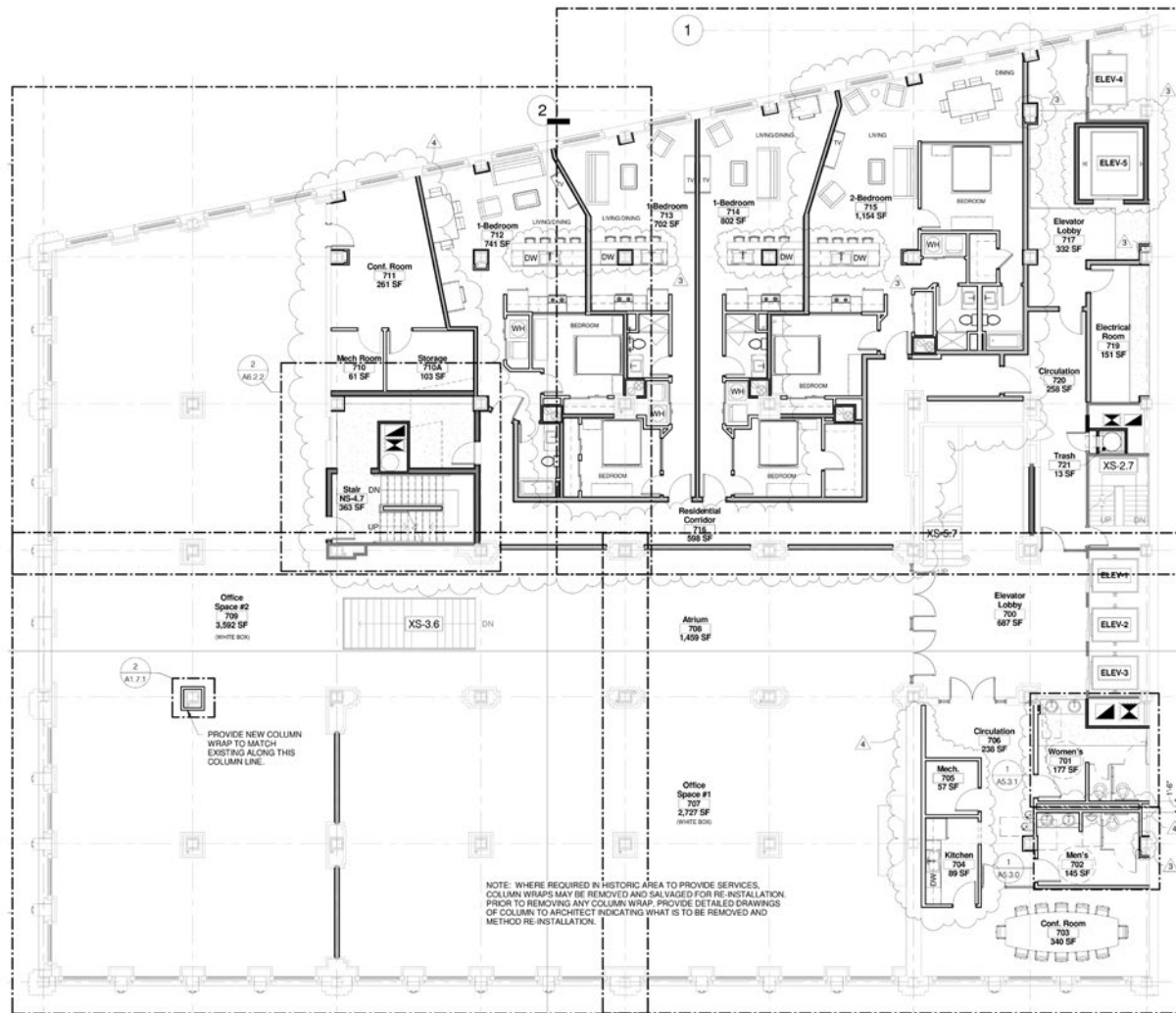


THE ATHLON

1118 Euclid Avenue, Cleveland, Ohio 44115



SEVENTH FLOOR OFFICE SPACE: 9,829 SF



[Click Here to View our Virtual Tour](#)

THE ATHLON

1118 Euclid Avenue, Cleveland, Ohio 44115



PROPERTY PHOTOS: MODERN FINISHES WITH HISTORIC DETAILS

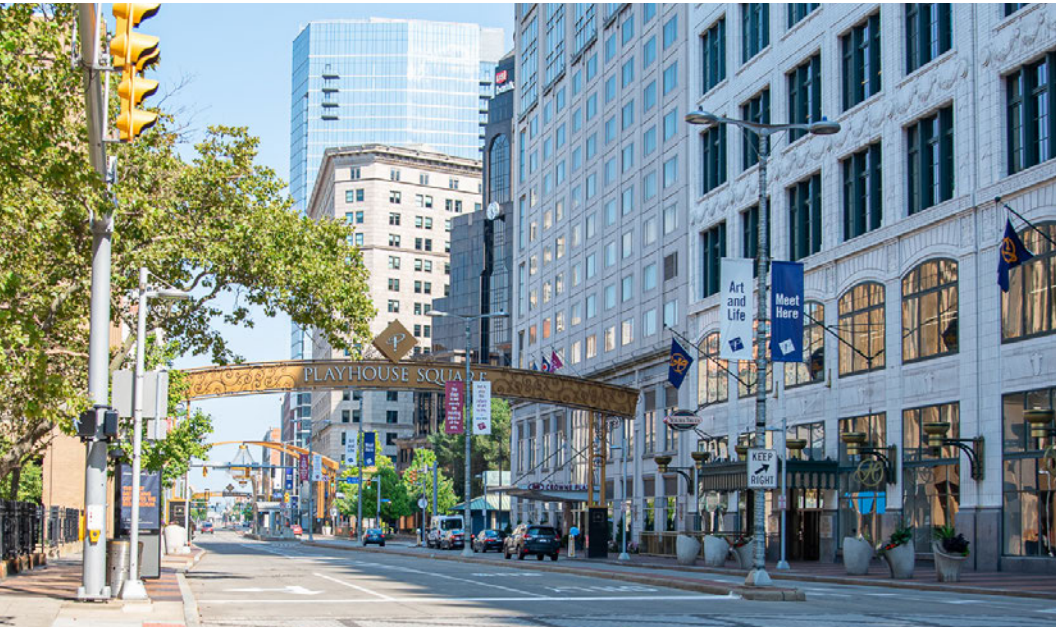


THE ATHLON

1118 Euclid Avenue, Cleveland, Ohio 44115



PROPERTY PHOTOS: EUCLID AVENUE

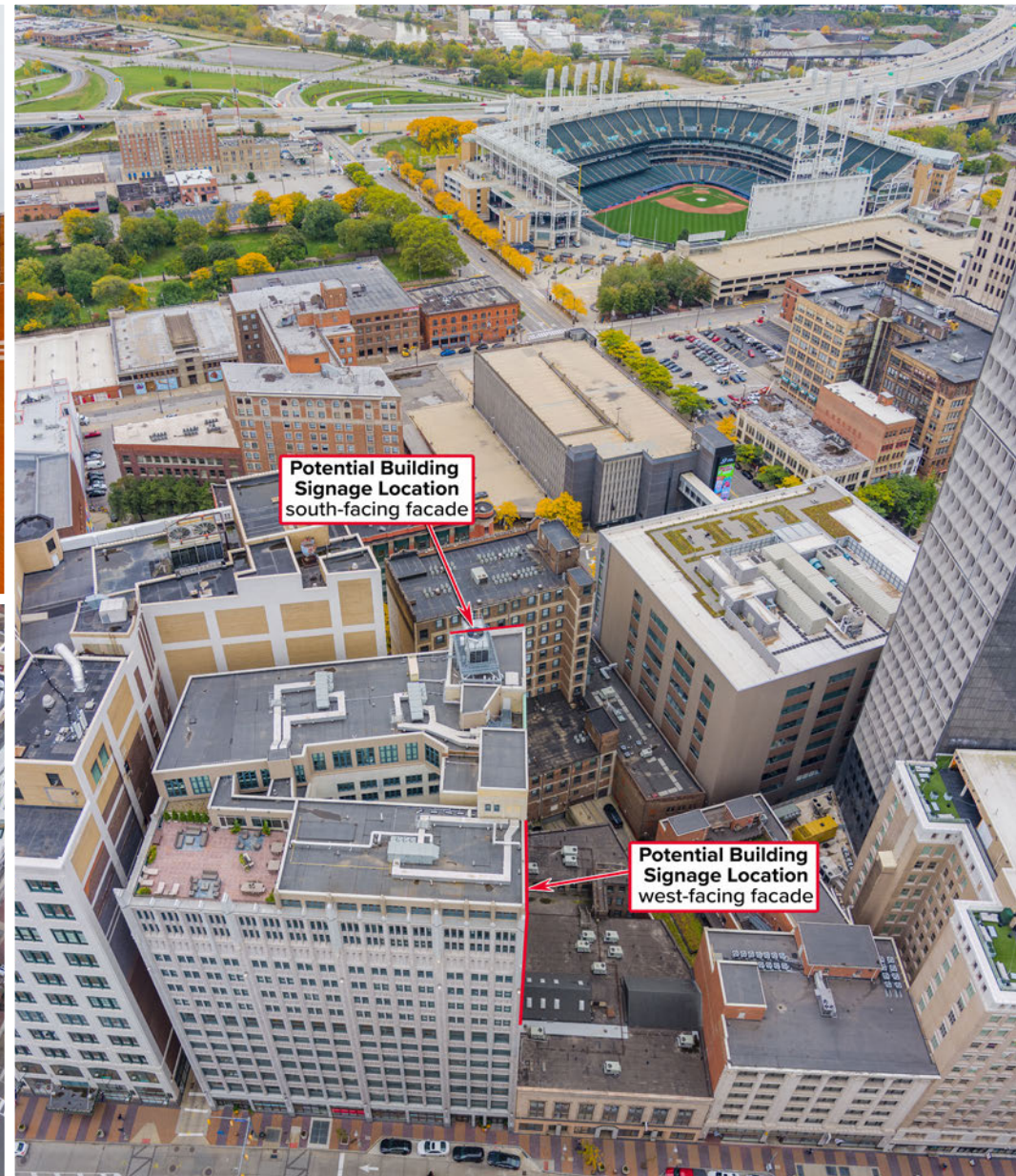
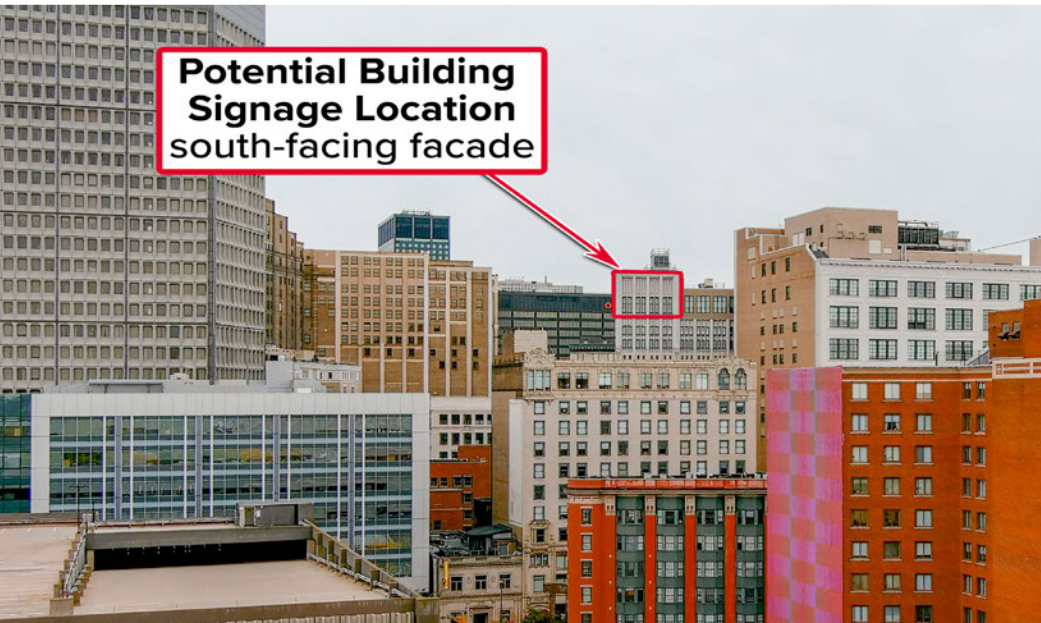


THE ATHLON

1118 Euclid Avenue, Cleveland, Ohio 44115

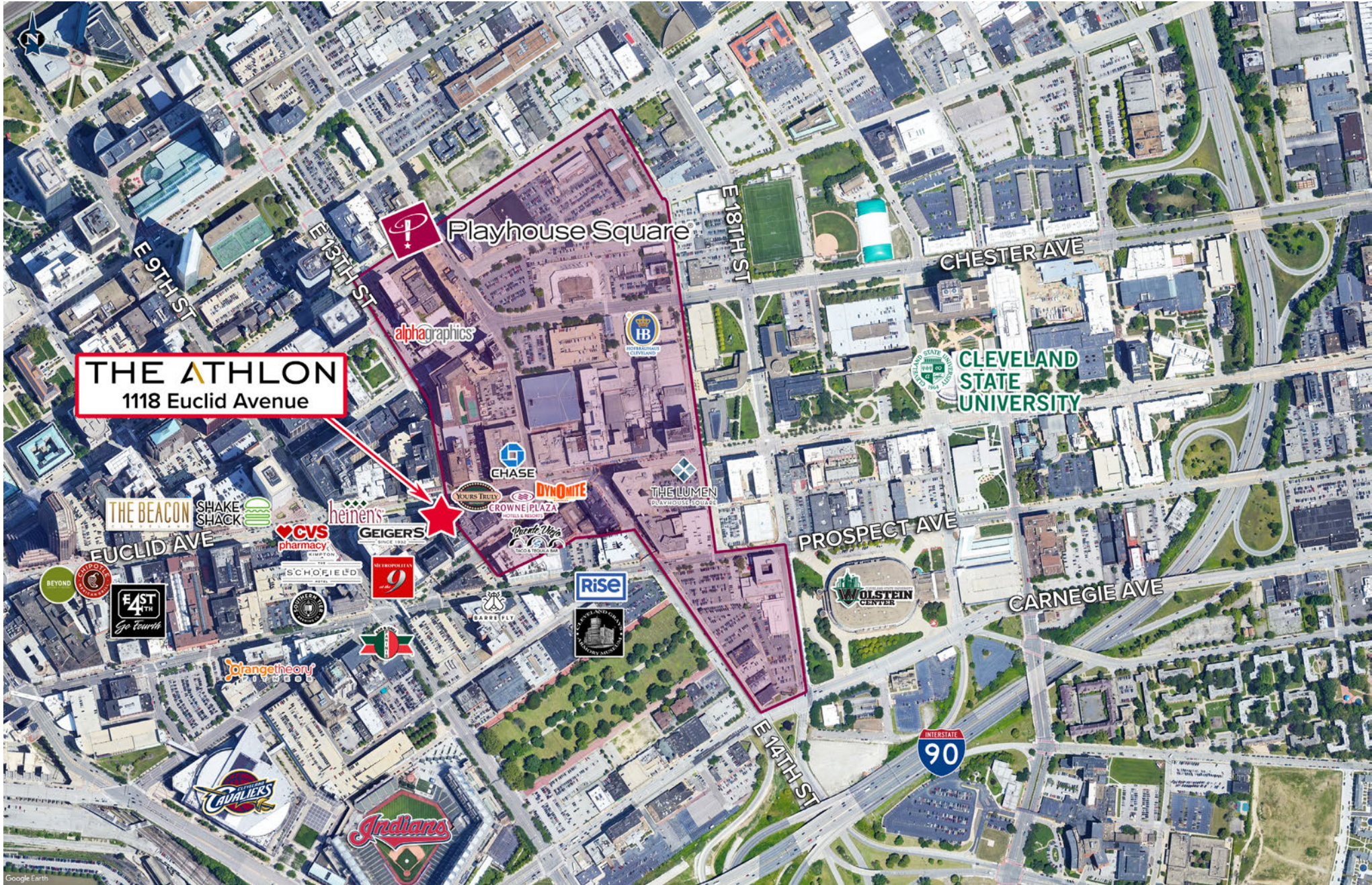


PROPERTY PHOTOS: POTENTIAL BUILDING SIGNAGE LOCATION



THE ATHLON

1118 Euclid Avenue, Cleveland, Ohio 44115



THE ATHLON

1118 Euclid Avenue, Cleveland, Ohio 44115



Logos: NorthCoast Harbor, NUEVO, RTA, AMTRAK, Rock & Dock at North Coast Harbor Water, BKL

Logos: Warehouse Downtown, Johnny's Little Bar, MALLORCA, IVY, STAR, DINO PALMIERI, surroundings home décor, CLEVELAND CHOP, drop bar

Logos: Galleria at Erieview, the

Logos: ideastream, WVL, WCLV, CROWNE PLAZA, Cowell & Hubbard, CIBRÈ, DYNOMITE DISTRICT, UNGS HOUSE, AUEL, Allen Theatre, Hanna Theatre, Mimi Ohio Theatre, KeyBank State Theatre, Conor Palace Theatre, Kennedy's Cabaret Theatre, Outcall Theatre, Westfield Studio Theatre, The Helen

Logos: aloft, BOLD, FLATS, PUNCH BOWL SOCIAL, MARGARITAVILLE, FWD, LINDEY'S LAKE HOUSE

THE ATHLON
1118 Euclid Avenue

SHERWIN WILLIAMS New Global HQ 2024 occupancy

Logos: Shoppers, Music Box Supper Club, JEMERLY, NAUTICA, QUIREN

Logos: RENAISSANCE CLEVELAND, JACK CLEVELAND, TOWER CITY CENTER, MCELENS, Dutch Brothers, Starbucks

Logos: CVS pharmacy, heinens, ALEX THEATER, GEIGERS, TITANS, SHAKE SHACK, WILBERES, OTAM, MARKET, Chocolate Bar, bari, MARBLE ROOM, Harry's Buffalo, Clevelander, GATEWAY DISTRICT, TACO BELL

Logos: EAST 4th Go Fourth, GOMA, ZOCALO, MABEL'S BBQ, Butcher and Brewer, MARIAN'S, MARIAN'S, MARIAN'S

THE ATHLON

1118 Euclid Avenue, Cleveland, Ohio 44115



DEVELOPMENT MAP Historic Euclid Avenue

Recently Completed

In-Progress

Planned



THE ATHLON

1118 Euclid Avenue, Cleveland, Ohio 44115



SHAWN DARLING

Sales Associate
sdarling@crescorealestate.com
+1 216 525 1497

JASON LAVER, SIOR

Senior Vice President
jlaver@crescorealestate.com
+1 216 525 1489

RICO A. PIETRO, SIOR

Principal
rpietro@crescorealestate.com
+1 216 525 1473

3 Summit Park Drive, Suite 200
Cleveland, Ohio 44131
Main +1 216 520 1200
Fax +1 216 520 1828
crescorealestate.com



[Click Here to View our Virtual Tour](#)



Independently Owned and Operated / A Member of the Cushman & Wakefield Alliance

Cushman & Wakefield Copyright 2021. No warranty or representation, express or implied, is made to the accuracy or completeness of the information contained herein, and same is submitted subject to errors, omissions, change of price, rental or other conditions, withdrawal without notice, and to any special listing conditions imposed by the property owner(s). As applicable, we make no representation as to the condition of the property (or properties) in question.