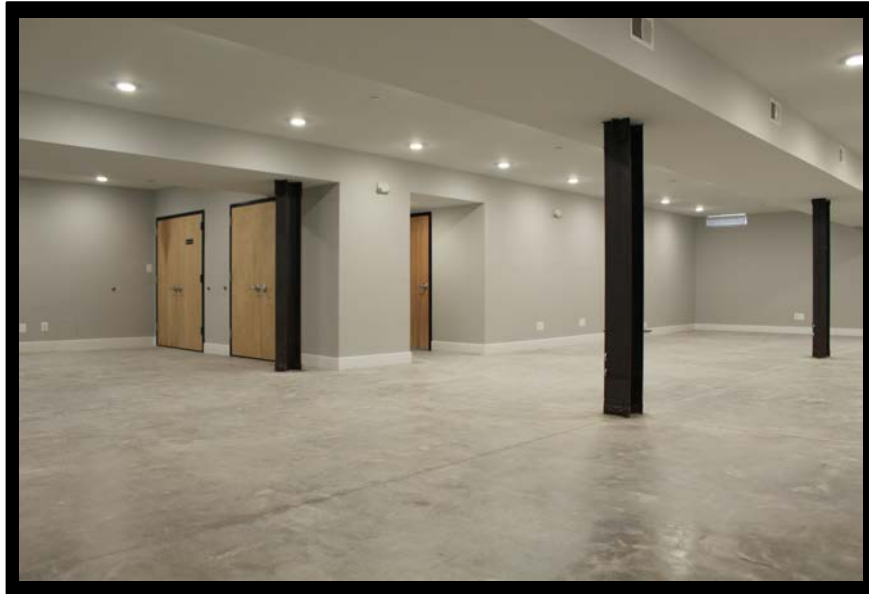




GOLD AND COMPANY, LLC



3233 O'Donnell St, Baltimore, MD 21224

Gold and Company, LLC

**5601 Newbury St.
Baltimore, MD 21209**

Jim Chivers
443.928.7522
[**jim@goldcommercial.net**](mailto:jim@goldcommercial.net)

Alex Simone
443.845.4413
[**alex@goldcommercial.net**](mailto:alex@goldcommercial.net)
Office: 410.578.1300
[**www.goldcommercial.net**](http://www.goldcommercial.net)

- **Canton Office Space for LEASE**
- **1,850 +/- sf**
- **Ideal for salon, law firms, finance/tech companies**
- **Landlord to complete renovations to your liking**
 - **Seeking 5 year tenant**
- **Private and secure entrances**
- **Complete range of business services/restaurants close by**
- **Exterior Signage Opportunity**

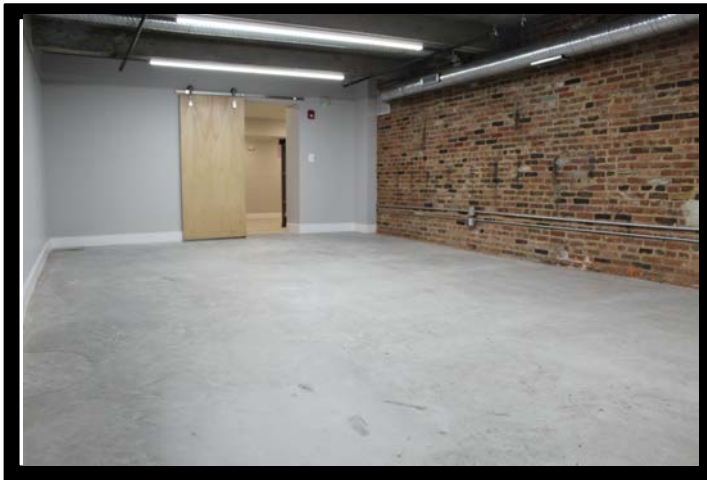


Gold and Company

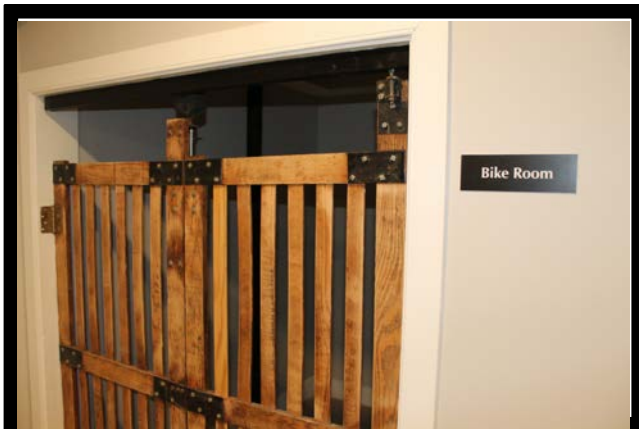
Commercial Real Estate in the Baltimore Metropolitan Area

3233 O'Donnell St, Baltimore, MD 21224

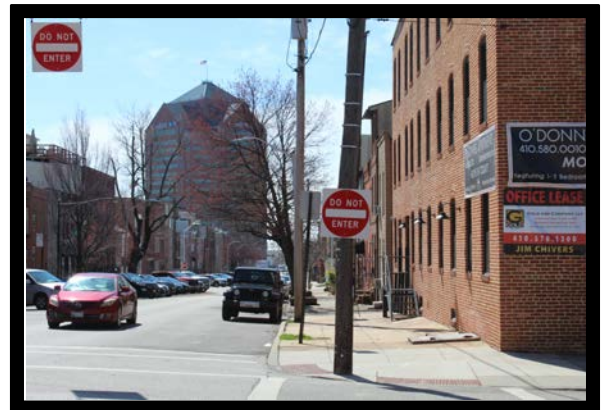
Conference Room



Floor Plans



Bike Room and Showers on-site



Walk to Canton Crossing

Jim Chivers / Alex Simone
Gold and Company, LLC
5601 Newbury St.
Baltimore, MD 21209

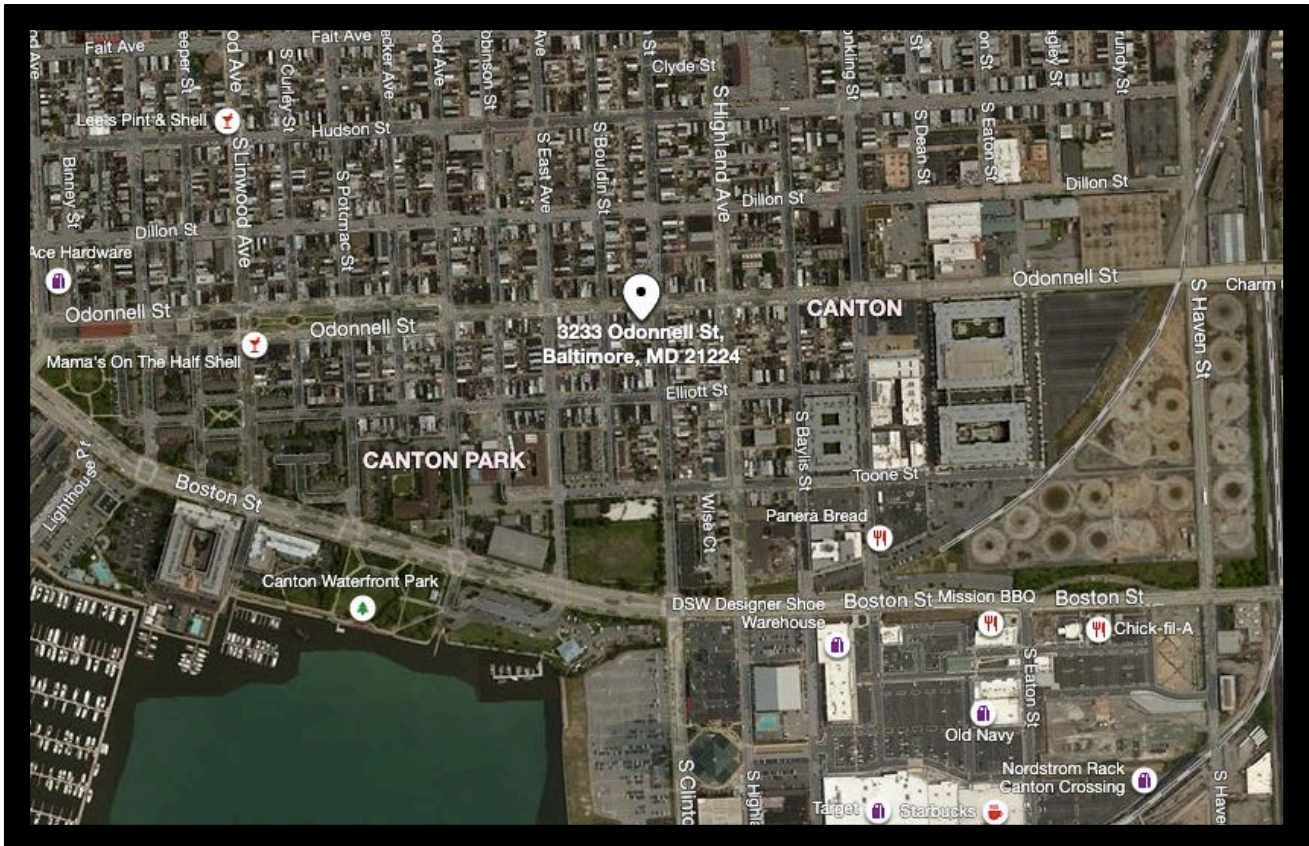
410.578.1300
www.goldcommercial.net



Gold and Company

Commercial Real Estate in the Baltimore Metropolitan Area

3233 O'Donnell St, Baltimore, MD 21224



Jim Chivers / Alex Simone
Gold and Company, LLC
5601 Newbury St.
Baltimore, MD 21209

410.578.1300
www.goldcommercial.net