



GOLD AND COMPANY, LLC



306 N. Colvin St. Baltimore, MD 21202

**Gold And
Company, LLC**

**5601 Newbury St.
Baltimore, MD 21209**

**Jim Chivers
443.928.7522 cell
jim@goldcommercial.net**

www.goldcommercial.net

- **Rare Downtown Warehouse Available**
- **FOR SALE**
- **+/- 5,000 SF Building**
- **2 Drive-In Doors**
- **I-MU Zoning—Baltimore City**
- **14+ Ceiling Height**
- **Rear Fenced Lot**
- **Gas Served**
- **3 Phase Power**
- **New Roof Installed**

This property offering is subject to change without notice. All information is deemed reliable but not guaranteed.

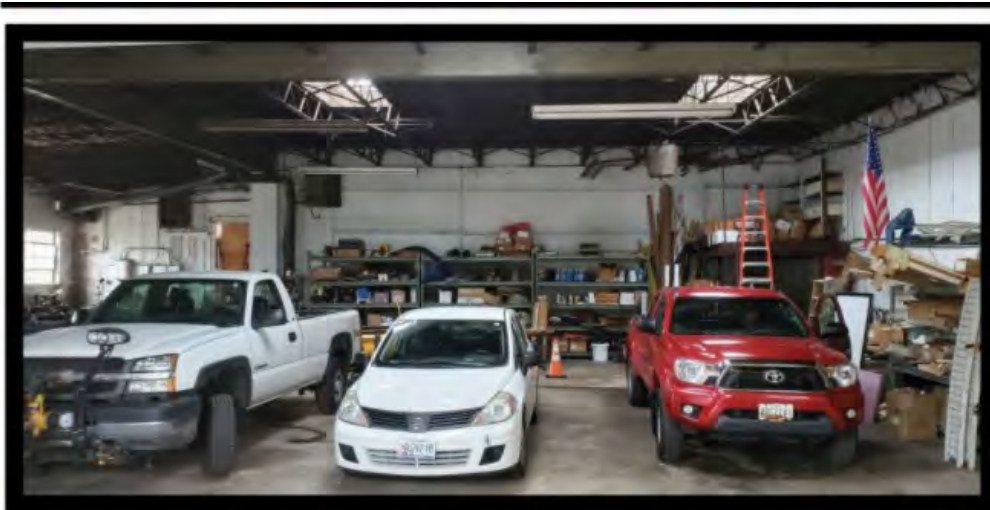
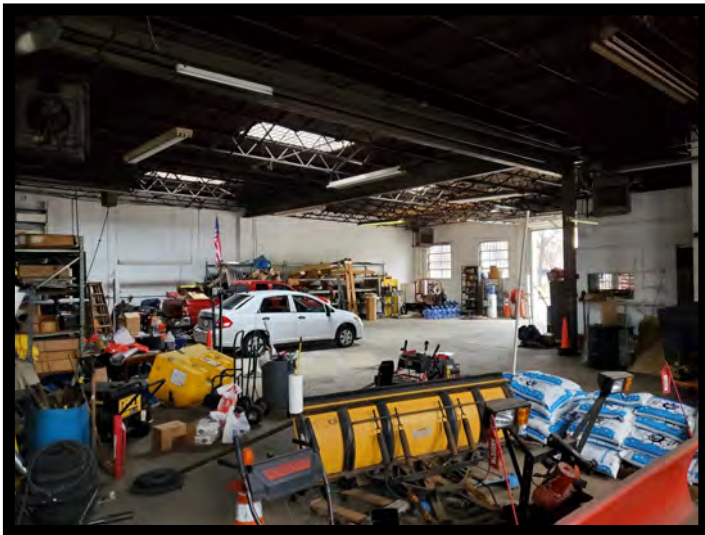


Gold And Company

Commercial Real Estate in the Baltimore Metropolitan Area

306 N. Colvin St. Baltimore, MD 21202

Pictures



Jim Chivers
Gold And Company, LLC
5601 Newbury St.
Baltimore, MD 21209

410.578.1300 (Office)

www.goldcommercial.net

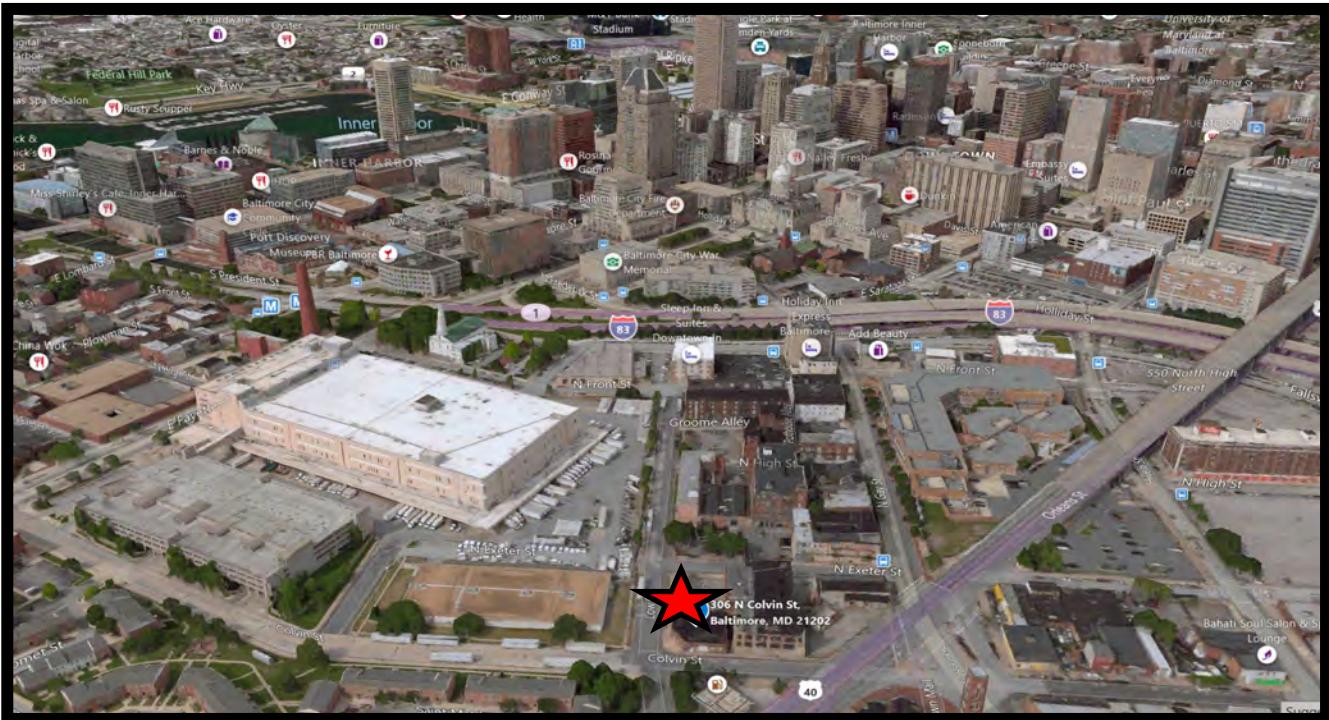
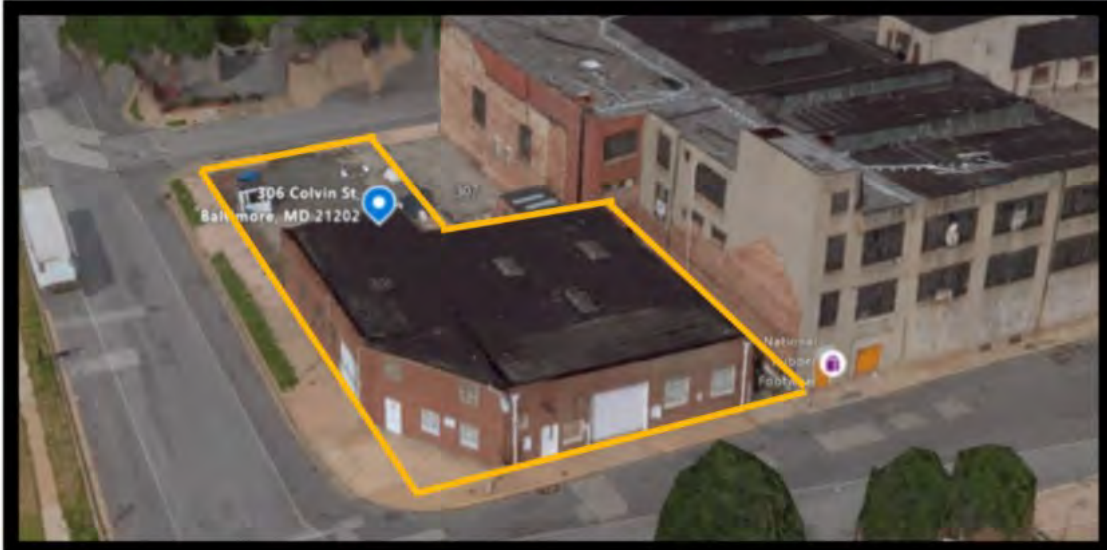


Gold And Company

Commercial Real Estate in the Baltimore Metropolitan Area

306 N. Colvin St. Baltimore, MD

Birds Eye View and Aerial



Jim Chivers
Gold And Company, LLC
5601 Newbury St.
Baltimore, MD 21209

410.578.1300 (Office)

www.goldcommercial.net