

# THE OWYHEE

RETAIL SPACE

ELEVENTH & MAIN | BOISE, ID



**TOK** COMMERCIAL  
REAL ESTATE

Holly Chetwood | Ph: 208.947.0827 | [holly@tokcommercial.com](mailto:holly@tokcommercial.com)

 **RETAIL** BROKERS  
NETWORK



RETAIL SPACE FOR LEASE  
**THE OWYHEE**  
11TH & MAIN STREETS BOISE, IDAHO 83702

COMMERCIAL

## RETAIL STREET VIEW

**THE PALLADIAN**  
2,928 SF

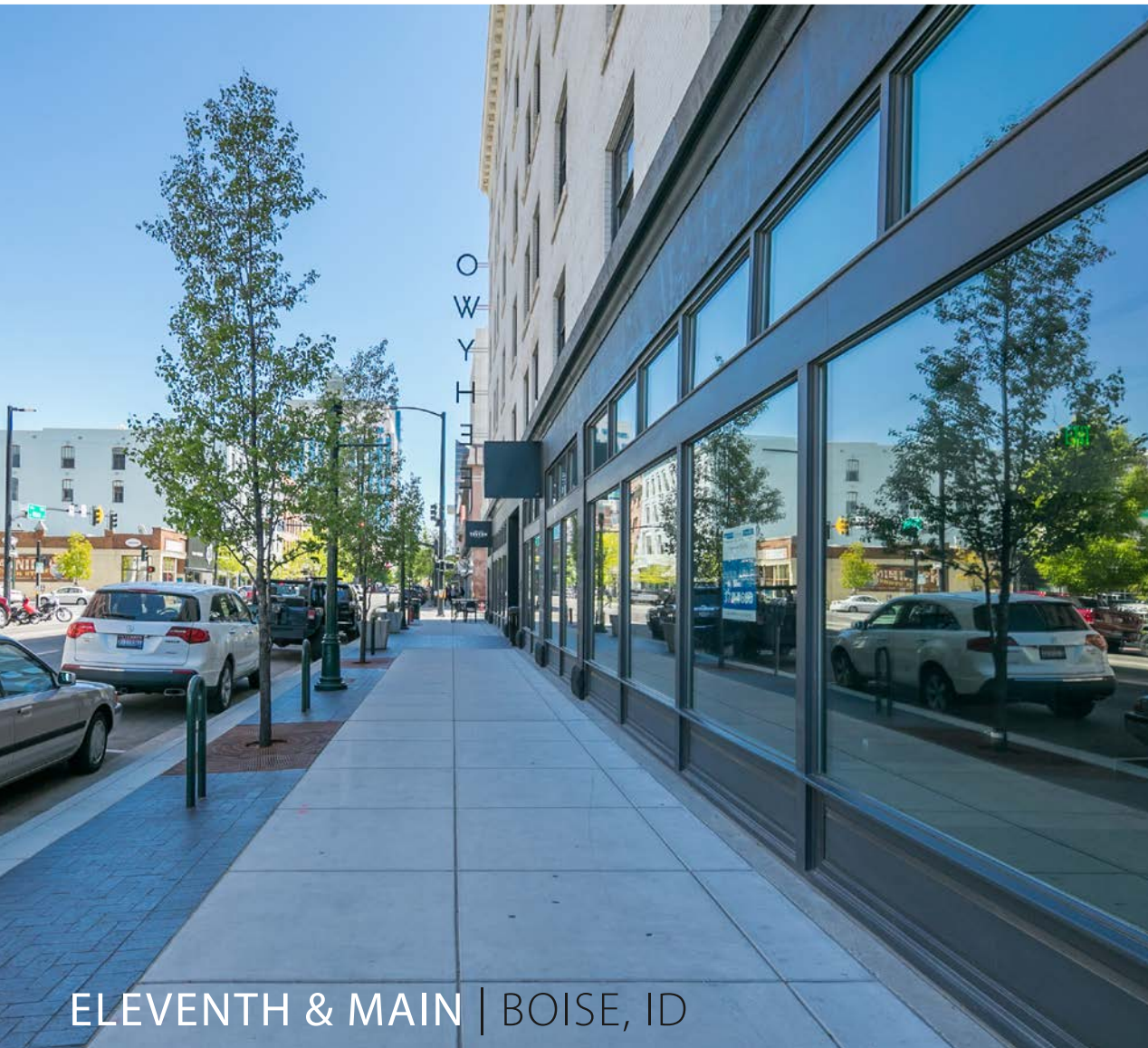




# RETAIL SPACE FOR LEASE **THE OWYHEE**

11TH & MAIN STREETS BOISE, IDAHO 83702

COMMERCIAL



ELEVENTH & MAIN | BOISE, ID

## PROPERTY INFORMATION

<b>Submarket:</b>	Downtown
<b>Bldg Type:</b>	Office / Retail
<b>Parking:</b>	Street & Private Lot
<b>Lease Terms:</b>	3+ Years
<b>Lease Type:</b>	NNN
<b>TI Allowance:</b>	Negotiable
<b>Available:</b>	Immediately

## LEASE SUMMARY

**THE PALLADIAN** | STE 150      2,928 SF      \$15.00/SF, NNN

## LISTING COMMENTS

Terrific opportunity in one of Boise's most iconic downtown buildings.

Suite 150 offers beautiful finishes and natural light with large palladian windows.

Walking distance to the Capitol Building, restaurants, shopping, and other professional services.

Building is perfectly situated between the downtown business center and Linen District.

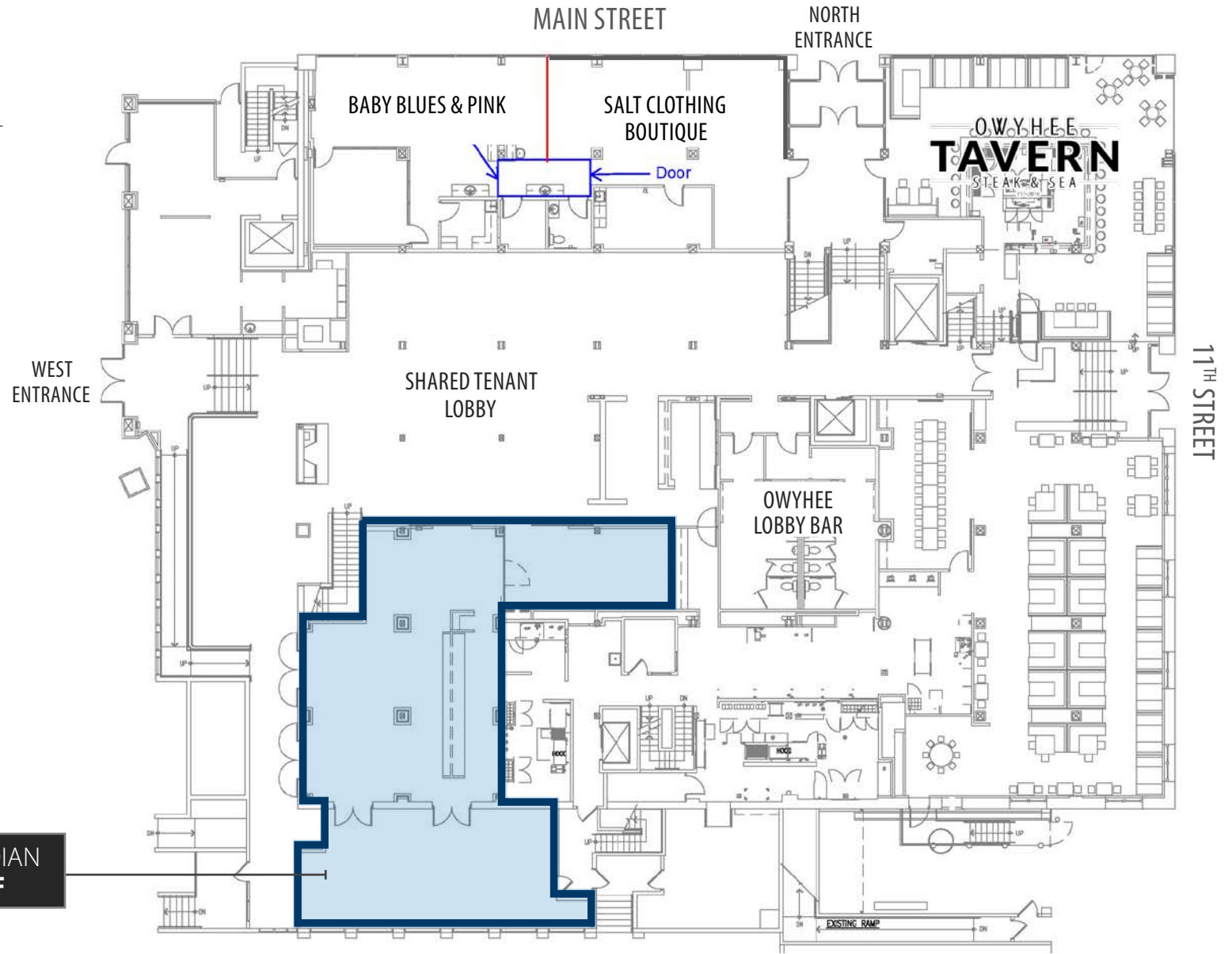
<b>Traffic Counts:</b>		
	11th & Main Streets	12,669 vpd
	11th & Grove Streets	7,534 vpd



RETAIL SPACE FOR LEASE  
**THE OWYHEE**  
 11TH & MAIN STREETS BOISE, IDAHO 83702

COMMERCIAL

FLOOR PLAN



**THE PALLADIAN**  
**2,928 SF**



RETAIL SPACE FOR LEASE  
**THE OWYHEE**  
11TH & MAIN STREETS BOISE, IDAHO 83702

# THE PALLADIAN

