

2331 SUPERIOR AVENUE

Cleveland, Ohio 44114

Commercial Space Available



JIM KRIVANEK / Vice President / jkrivanek@crescorealestate.com / +1 216 525 1498

RICO A. PIETRO, SIOR / Principal / rpietro@crescorealestate.com / +1 216 525 1473

ANTONIO SIBBIO / Associate / asibbio@crescorealestate.com / +1 216 525 1479

3 Summit Park Drive, Suite 200
Cleveland, Ohio 44131
Main +1 216 520 1200
Fax +1 216 520 1828
crescorealestate.com

Independently Owned and Operated / A Member of the Cushman & Wakefield Alliance

Cushman & Wakefield Copyright 2020. No warranty or representation, express or implied, is made to the accuracy or completeness of the information contained herein, and same is submitted subject to errors, omissions, change of price, rental or other conditions, withdrawal without notice, and to any special listing conditions imposed by the property owner(s). As applicable, we make no representation as to the condition of the property (or properties) in question.



**CUSHMAN &
WAKEFIELD**



2331 SUPERIOR AVENUE

Cleveland, Ohio 44114

Commercial Space Available

AVAILABLE SPACE

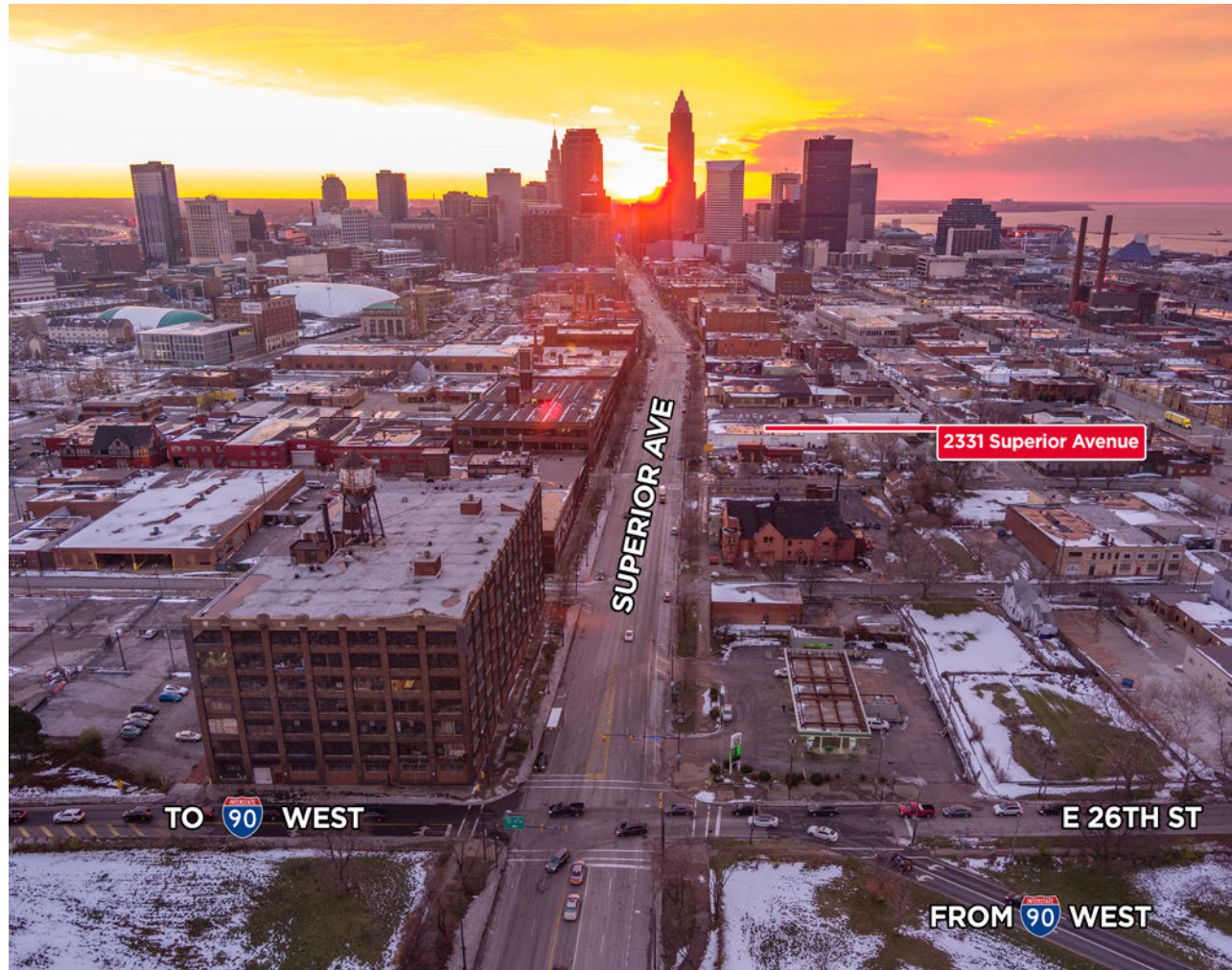
6,500 SF

COMMENTS

- 1,500 SF office and 5,000 SF warehouse
- One (1) drive-in door
- One (1) mile from Public Square with direct access from the highway
- Close proximity to I-90, SR 2, and I-77
- On-site parking with additional parking options from ownership

RENT

\$8.00/SF NNN



2331 SUPERIOR AVENUE

Cleveland, Ohio 44114

Commercial Space Available

AERIAL

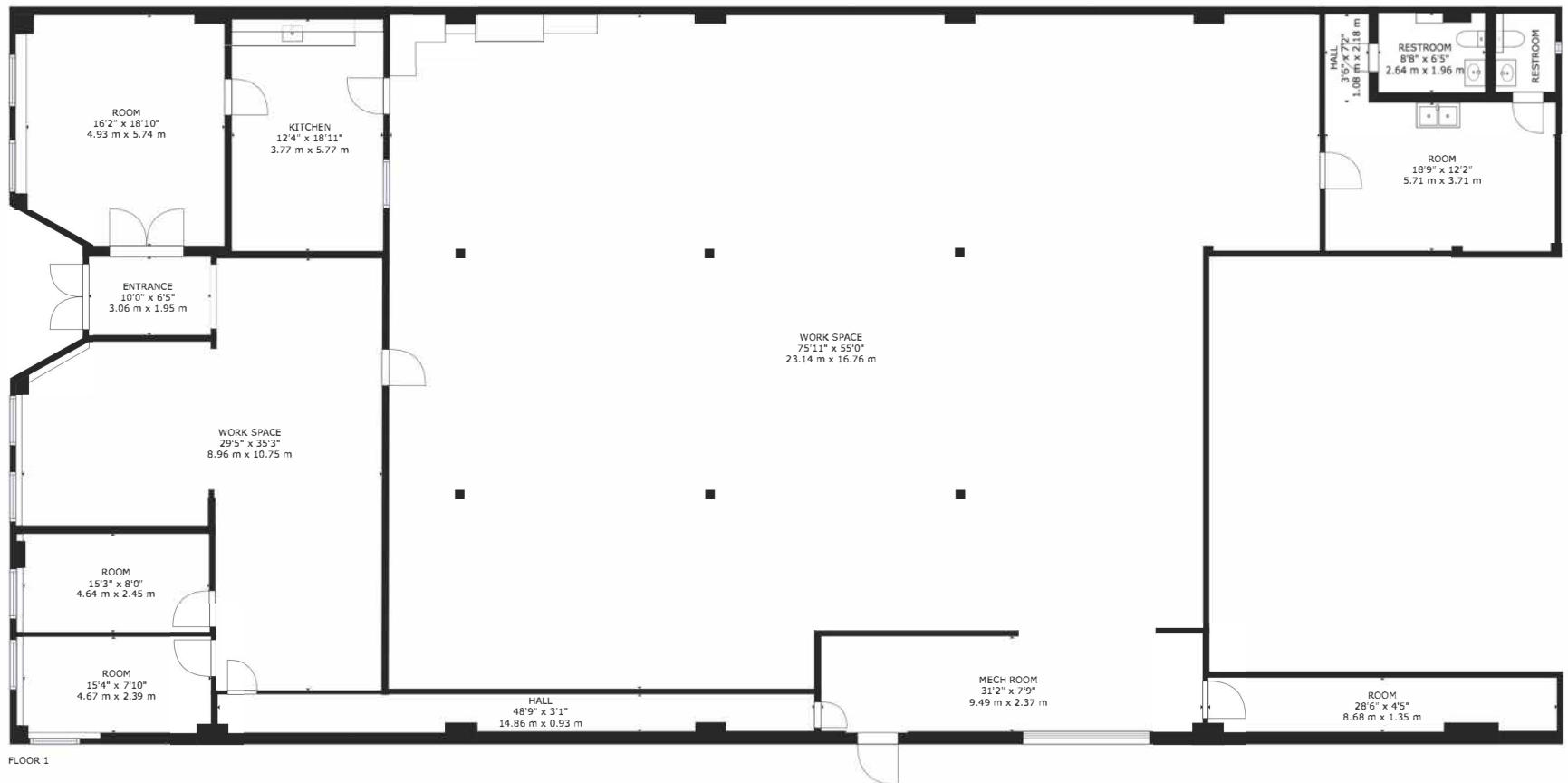


2331 SUPERIOR AVENUE

Cleveland, Ohio 44114

Commercial Space Available

FLOORPLAN



2331 SUPERIOR AVENUE

Cleveland, Ohio 44114

Commercial Space Available

TENANT AMENITIES & SERVICES

Special Improvement District (SID) that promotes safety, growth, and vitality in the neighborhood through the following programs:

Clean & Safe Program

* Clean Ambassadors: includes graffiti removal, litter removal, power washing of sidewalks, weed abatement, removal of dog waste

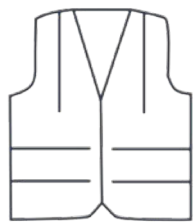
* Safety Ambassadors: regular patrols; ongoing communications with police; contact with pedestrians to provide information, directions; visitor assistance; safety escorts; help direct homeless people to needed services

* Business Development: business recruitment and retention; parking and transportation management; resident attraction and housing development support; technical assistance to economic development

Where Are We Wednesdays: task force that identifies the needs of the community by engaging its residents and businesses

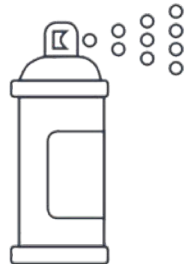
New Wheels: A heavy-duty electric trike equipped with water tank and pressure washer for on-demand removal of spills and stains; available Monday through Friday, 9:00AM - 5:00PM

Fall and Spring Clean Ups



125

SECURITY CHECKS
& SAFETY ESCORTS



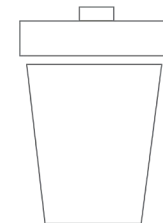
150

GRAFFITI TAGS
REMOVED



2,058

BUSINESS
CONTACTS



82,369

POUNDS OF
TRASH COLLECTED

SUPERIOR
Arts

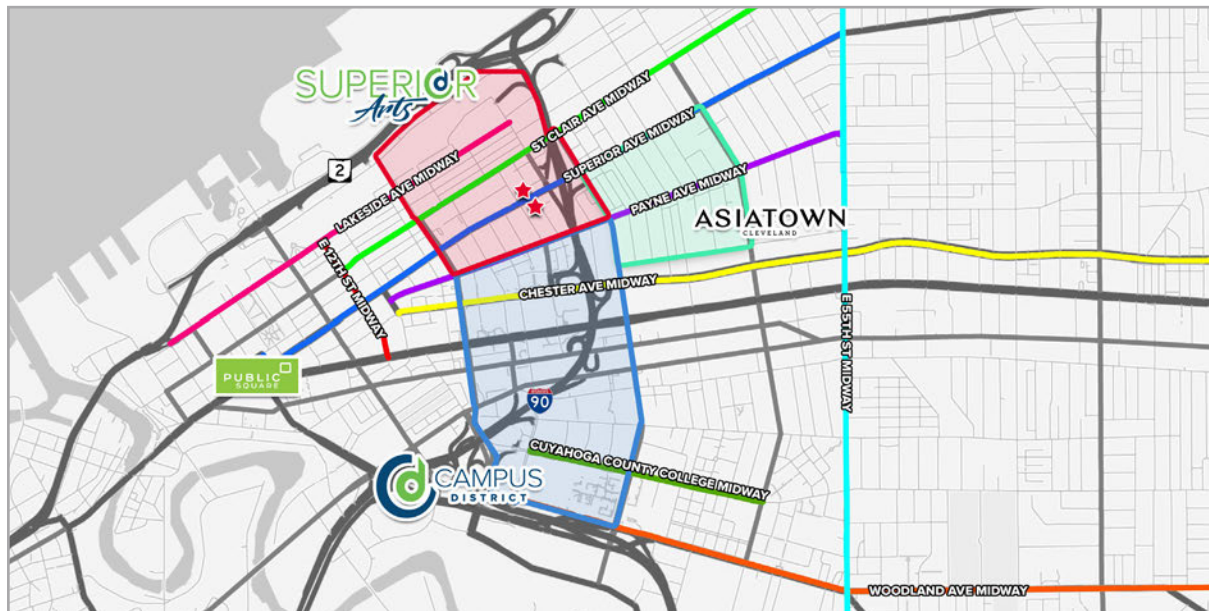
2331 SUPERIOR AVENUE

Cleveland, Ohio 44114

Commercial Space Available

The Midway - Cleveland's Protected Bikeway Network

- * When complete, will be the most extensive bike network of its kind anywhere
- * Will consist of 60 miles of landscape-buffered, two-directional center lane bike lanes, with separate bike signal system
- * A total of seven (7) Midway routes will run through the Superior Arts and Campus Districts.
- * One of the project's pilot corridors is Superior Avenue, and the route runs directly in front of 2435 Superior Avenue East.



2331 SUPERIOR AVENUE

Cleveland, Ohio 44114

Commercial Space Available

