



OFFICE FOR LEASE  
**MURPHY STORAGE**  
 2650 S. COLE ROAD | BOISE, IDAHO 83709

COMMERCIAL



EASY ACCESS TO I-84!

**FOR LEASE** | 448 SF

**CONTACT**

**Zack Stoddard**

208.947.5509

✉ zacks@tokcommercial.com

**Dan Minnaert, SIOR, CCIM**

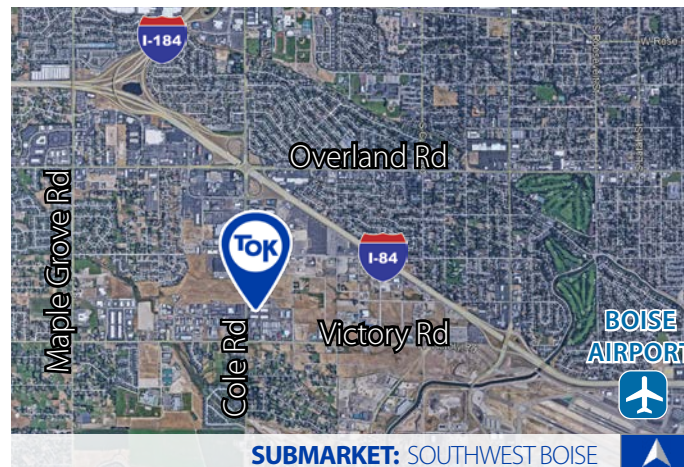
208.947.0845

✉ dan@tokcommercial.com

**Devin Pierce, SIOR**

208.947.0850

✉ devin@tokcommercial.com



SUBMARKET: SOUTHWEST BOISE

**PROPERTY INFORMATION**

**Submarket:** Southwest

**Available:** Immediately

**Bldg Type:** Office

**Zoning:** M-1D

**Lease Term:** Negotiable

**Lease Type:** Modified Gross

**AVAILABLE SPACE**

SPACE:	RSF:	RATE:
Suite C	448 SF	\$0.80/SF

**LISTING COMMENTS**

Great central location on South Cole Road.

Hard to find office space.

Easy access to I-84 and the Boise Airport.

Close to services.

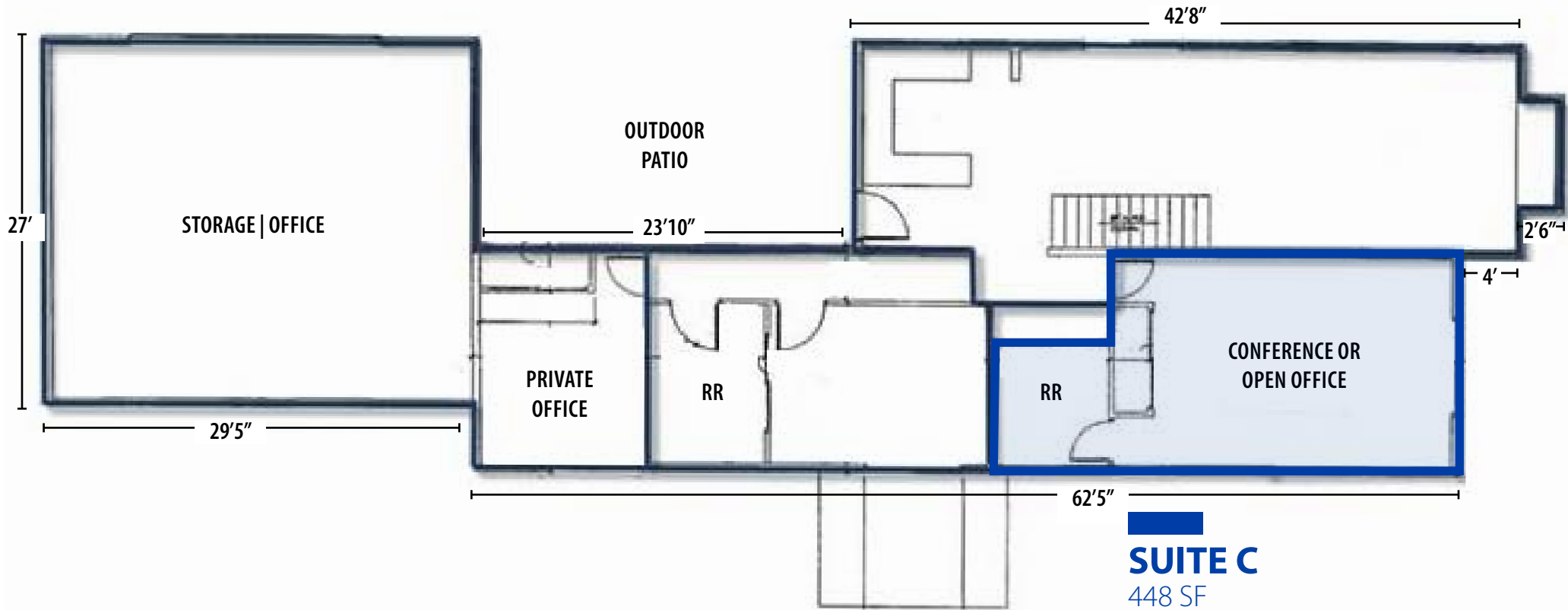
**CONTACT AGENT FOR ADDITIONAL STORAGE OPPORTUNITIES**



OFFICE FOR LEASE  
**MURPHY STORAGE**  
 2650 S. COLE ROAD | BOISE, IDAHO 83709

COMMERCIAL

**FLOOR PLAN**  
 FIRST FLOOR





OFFICE FOR LEASE  
**MURPHY STORAGE**  
 2650 S. COLE ROAD | BOISE, IDAHO 83709

COMMERCIAL

**SITE AERIAL**





OFFICE FOR LEASE  
**MURPHY STORAGE**  
 2650 S. COLE ROAD | BOISE, IDAHO 83709

COMMERCIAL

LOCATOR AERIAL

