



COMMERCIAL

OFFICE BUILDING FOR LEASE

300 MAIN

300 W. MAIN STREET, BOISE, ID 83702



PROPERTY INFORMATION

Submarket:	Downtown	Parking:	48 spaces
Bldg Type:	Multi-tenant Office	Lease Terms:	3-5 Years
Quality:	Class B	Lease Type:	FLSV
Building Size:	17,693 SF	TI Allowance:	As is
# of Floors:	2	Availability:	Immediate

AVAILABLE SPACE

SPACE	SIZE	RATE	PARKING
Suite 100	1,866 RSF	\$19.00/SF	5 stalls
Suite 107	856 RSF	\$19.00/SF	1 stall
Suite 150	1,268 RSF	\$19.00/SF	3 stalls
Suite 200	3,314 RSF	\$19.00/SF	6 stalls
Suite 208	446 SF	\$700/MO	1 stall
Suite 300	1,432 RSF	\$18.00/SF	2 stalls

LISTING COMMENTS

- Prime location in Downtown Boise.
- Office spaces built out with neutral finishes.
- Outdoor patio seating with large shade umbrellas.
- Parking included with lease.
- Lockers and showers available in the basement for tenant use.

CONTACT

Karena Gilbert, SIOR
 208.947.0853
 ✉ karena@tokcommercial.com

Al Marino, SIOR
 208.947.0811
 ✉ al@tokcommercial.com



SUBMARKET: DOWNTOWN BOISE



SUITE 107

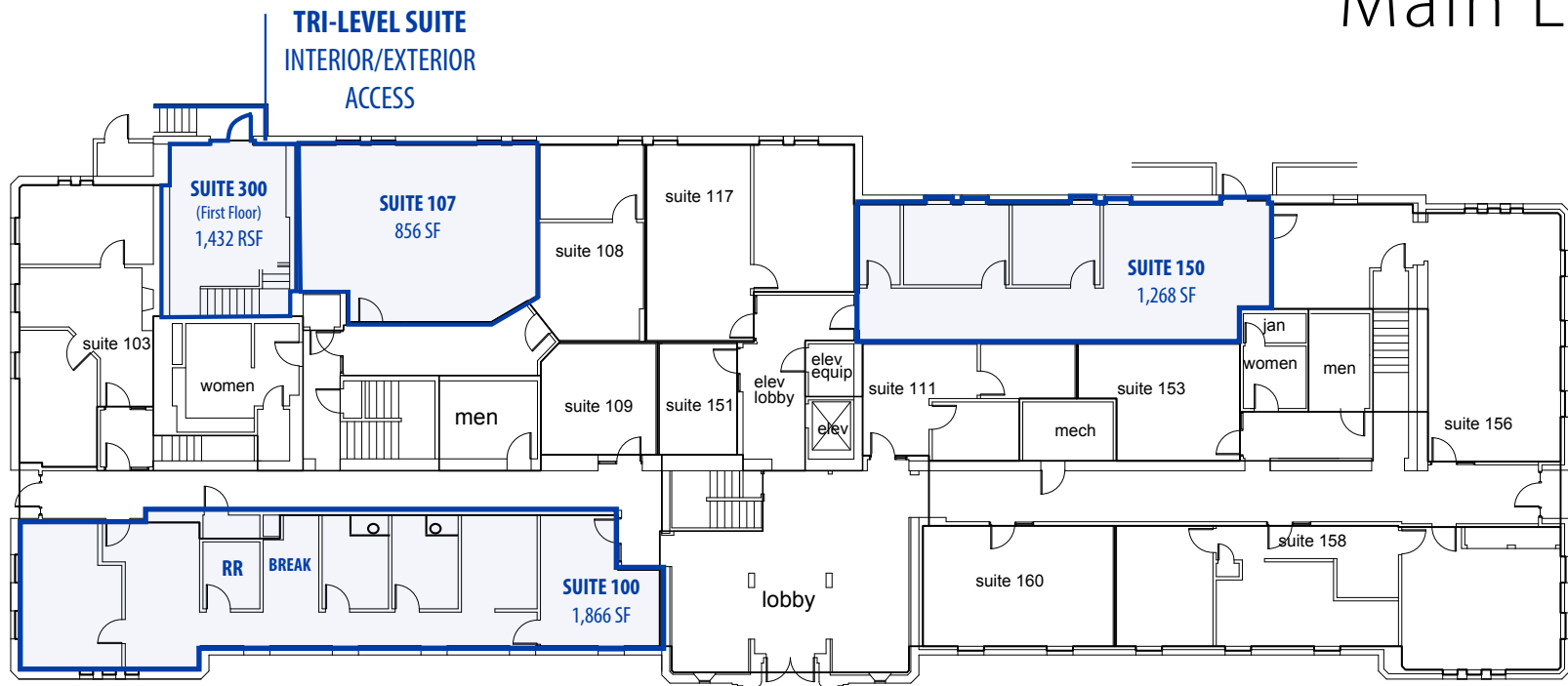


SUITE 100



SUITE 100

Main Level



Do not disturb tenant. Contact agent for showings.



SUITE 200



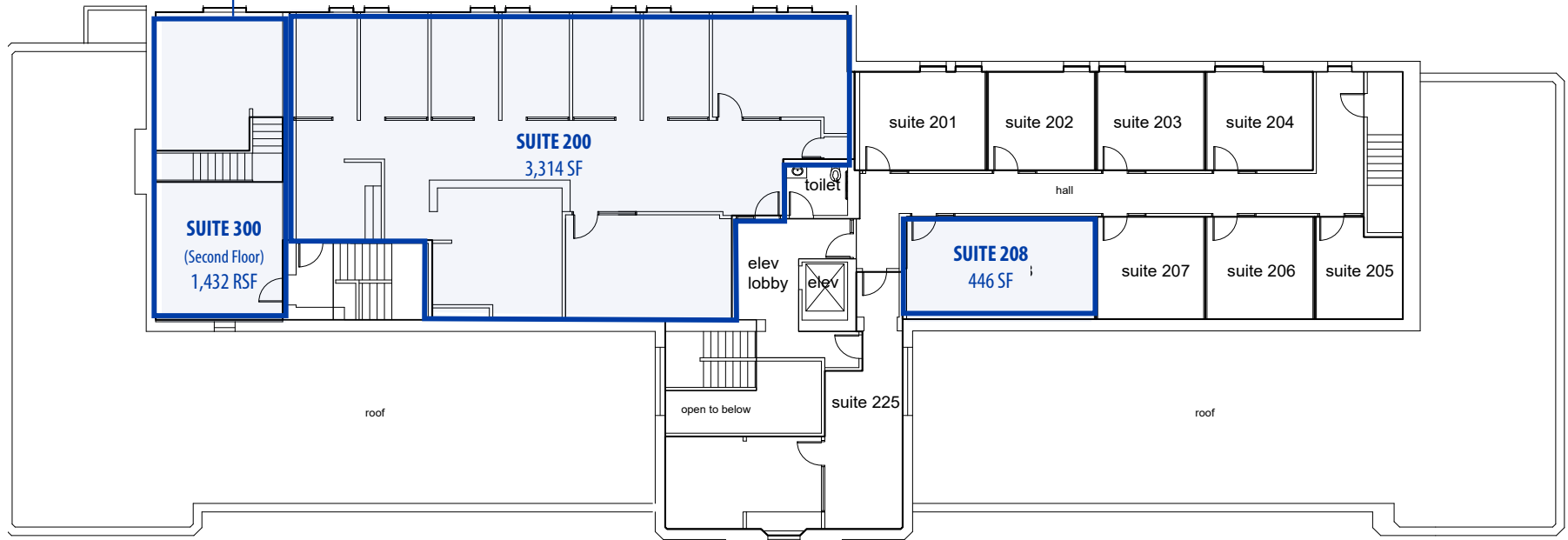
SUITE 208



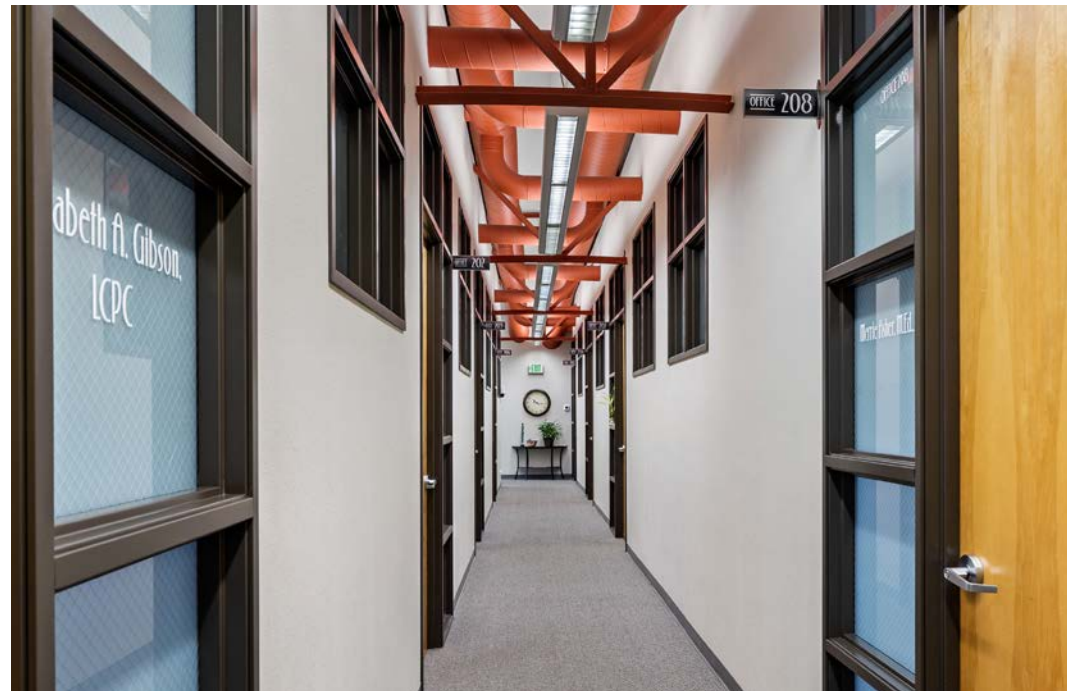
SUITE 200

Second Level

TRI-LEVEL SUITE
INTERIOR/EXTERIOR
ACCESS



**OPEN AREA
COMMONS**





COMMERCIAL

OFFICE BUILDING FOR LEASE

300 MAIN

300 W. MAIN STREET, BOISE, ID 83702



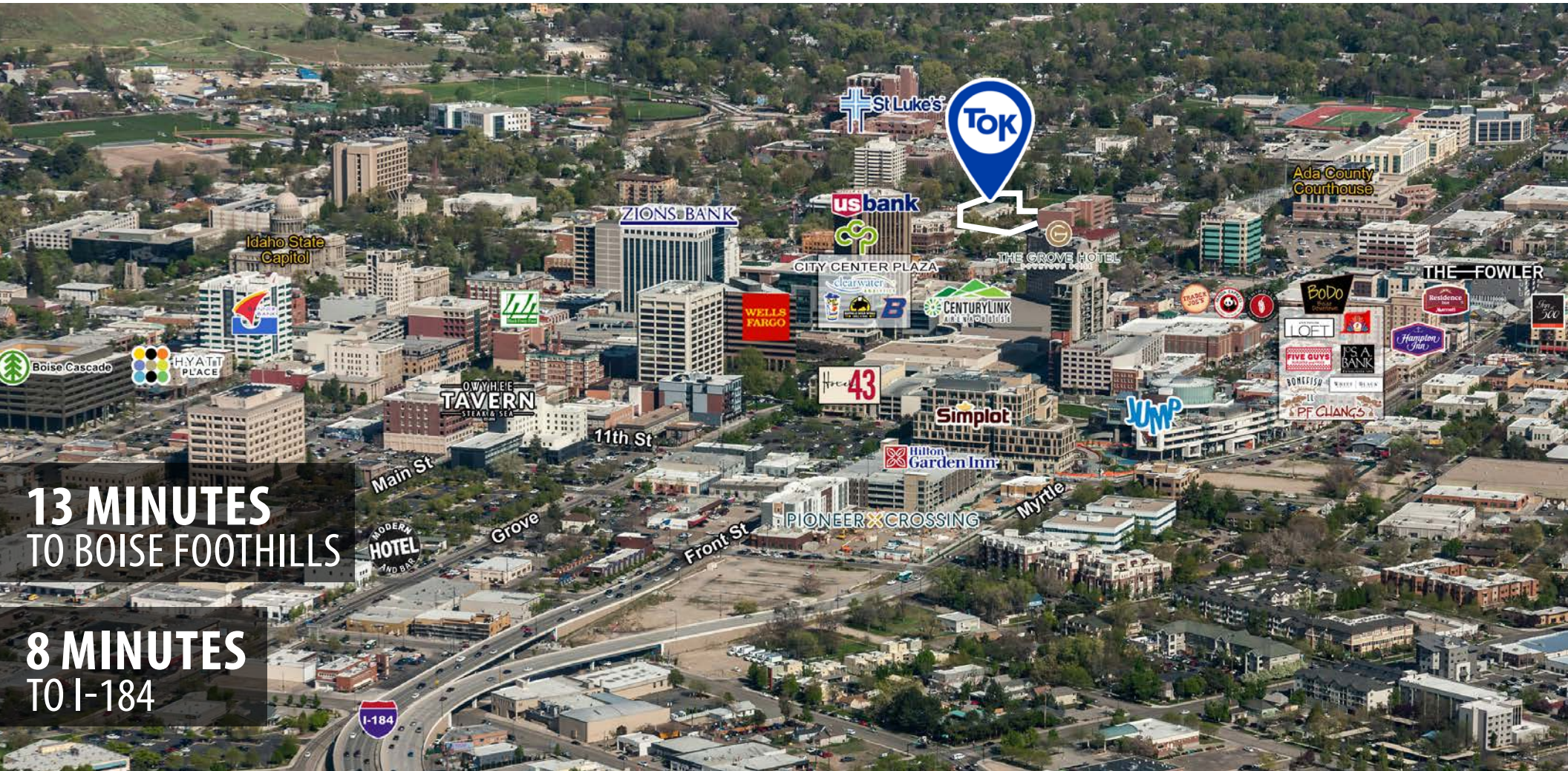


COMMERCIAL

OFFICE BUILDING FOR LEASE **300 MAIN**

300 W. MAIN STREET, BOISE, ID 83702

CONVENTIENT CENTRAL LOCATION



13 MINUTES
TO BOISE FOOTHILLS

8 MINUTES
TO I-184