



OFFICE SPACE FOR LEASE 10200 EMERALD

10200 W. EMERALD STREET, BOISE, ID 83704

COMMERCIAL



PROPERTY INFORMATION

Submarket:	Central Boise	Lease Type:	FLSVEJ
Property Type:	Office	Lease Term:	3-5 years
Building Size:	±15,498 SF	TI Allowance:	Negotiable
# of Floors:	1	Available:	Immediately
		Parking:	3.5 : 1,000

AVAILABLE SPACE

SPACE	SIZE	RATE
Suite 101/102	5,136 RSF	\$17.00/SF

Suite is currently combined, but can be demised to 2,586 SF each.

CONTACT

Karena Gilbert
 208.947.0853
 ✉ karena@tokcommercial.com



LISTING COMMENTS

- Fully built out space with private offices, restrooms, and conference room.
- Centrally located on the corner of Emerald and Armstrong.
- Easy access to I-184 connector and I-84 at Franklin Road.
- Close to restaurants, shopping, and lodging.

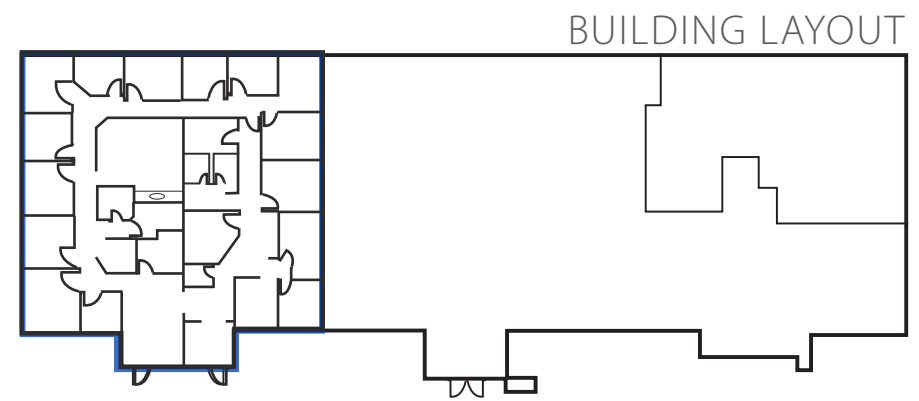
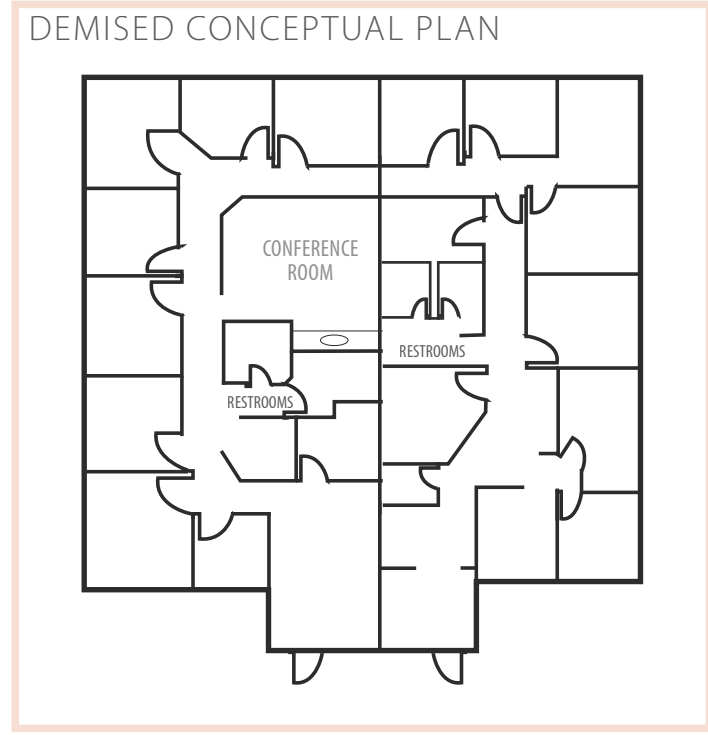
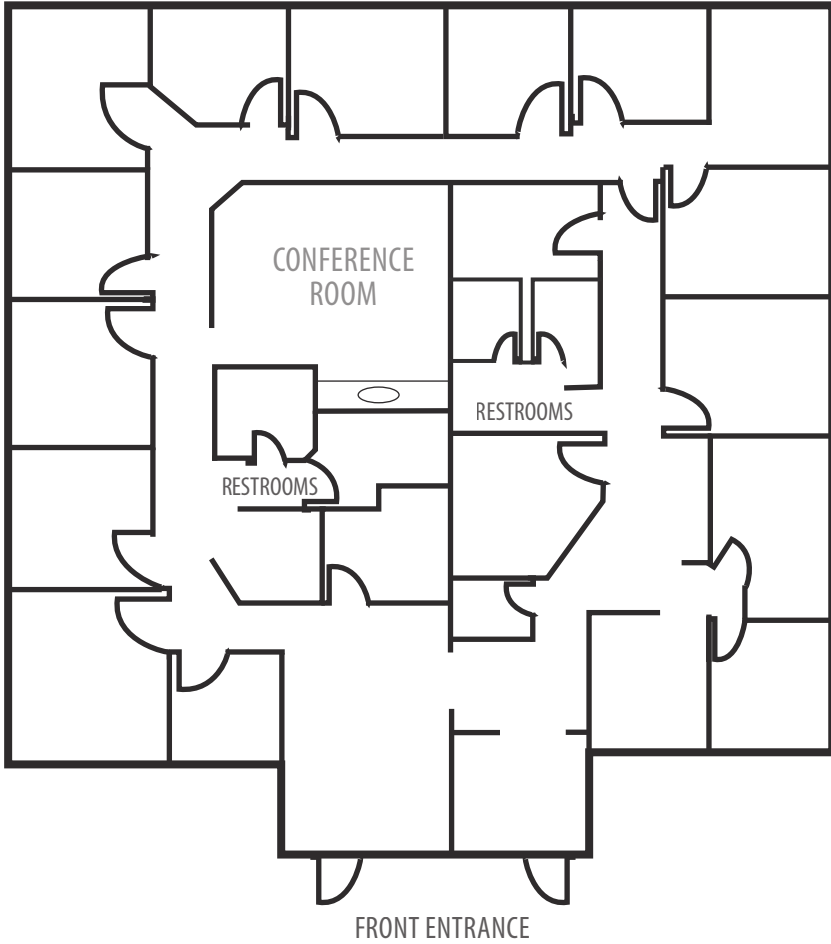


OFFICE SPACE FOR LEASE 10200 EMERALD

10200 W. EMERALD STREET, BOISE, ID 83704

COMMERCIAL

FLOOR PLAN





OFFICE SPACE FOR LEASE **10200 EMERALD**

10200 W. EMERALD STREET, BOISE, ID 83704

BUILDING EXTERIOR



December 28, 2020

This information was obtained from sources believed reliable but cannot be guaranteed. Any opinions or estimates are used for example only.

tokcommercial.com