



GOLD AND COMPANY, LLC



2112 Aliceanna St. Baltimore, MD 21224

Gold And Company, LLC

**5601 Newbury St.
Baltimore, MD 21209**

**Jim Chivers /
Gary Glover
443.928.7522 cell
jim@goldcommercial.net**

www.goldcommercial.net

- **Rare Building Available with Visibility and Waterfront Views FOR SALE / LEASE**
- **Office / Light Manufacturing**
- **+/- 5,500 SF Building**
- **1 Drive-In Door with access on Boston St.**
- **C-1 Zoning—Baltimore City**
- **3 Stories**
- **Gas Served**
- **3 Phase Power**
- **Contact us for More Information**

This property offering is subject to change without notice. All information is deemed reliable but not guaranteed.

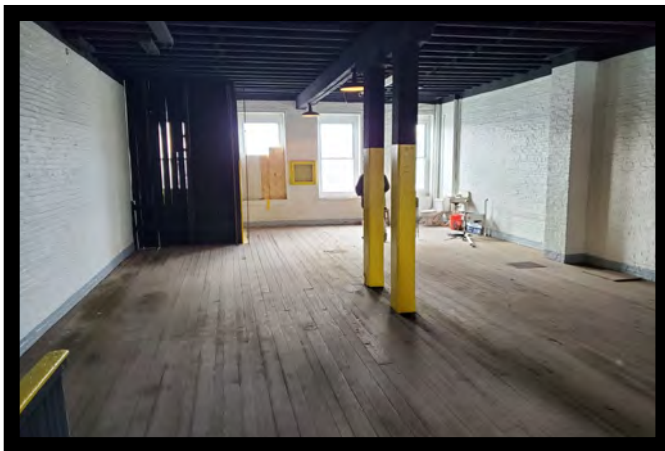
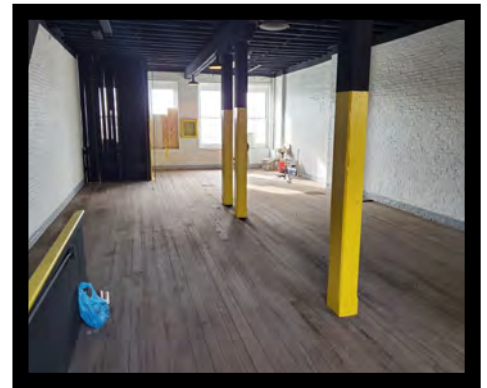
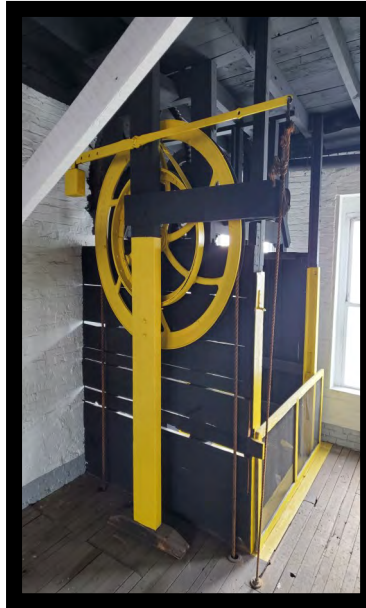
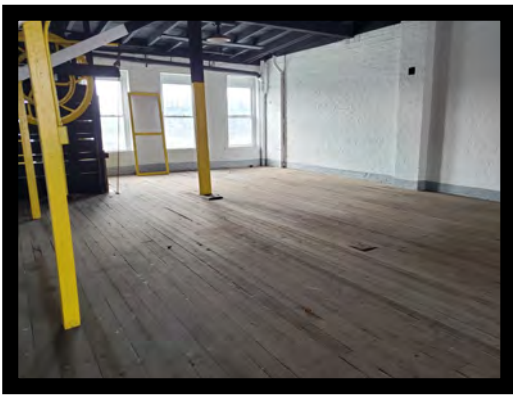


Gold And Company

Commercial Real Estate in the Baltimore Metropolitan Area

2112 Aliceanna St. Baltimore, MD 21224

Interior Pictures



Jim Chivers / Gary Glover
Gold And Company, LLC
5601 Newbury St.
Baltimore, MD 21209

410.578.1300 (Office)

www.goldcommercial.net

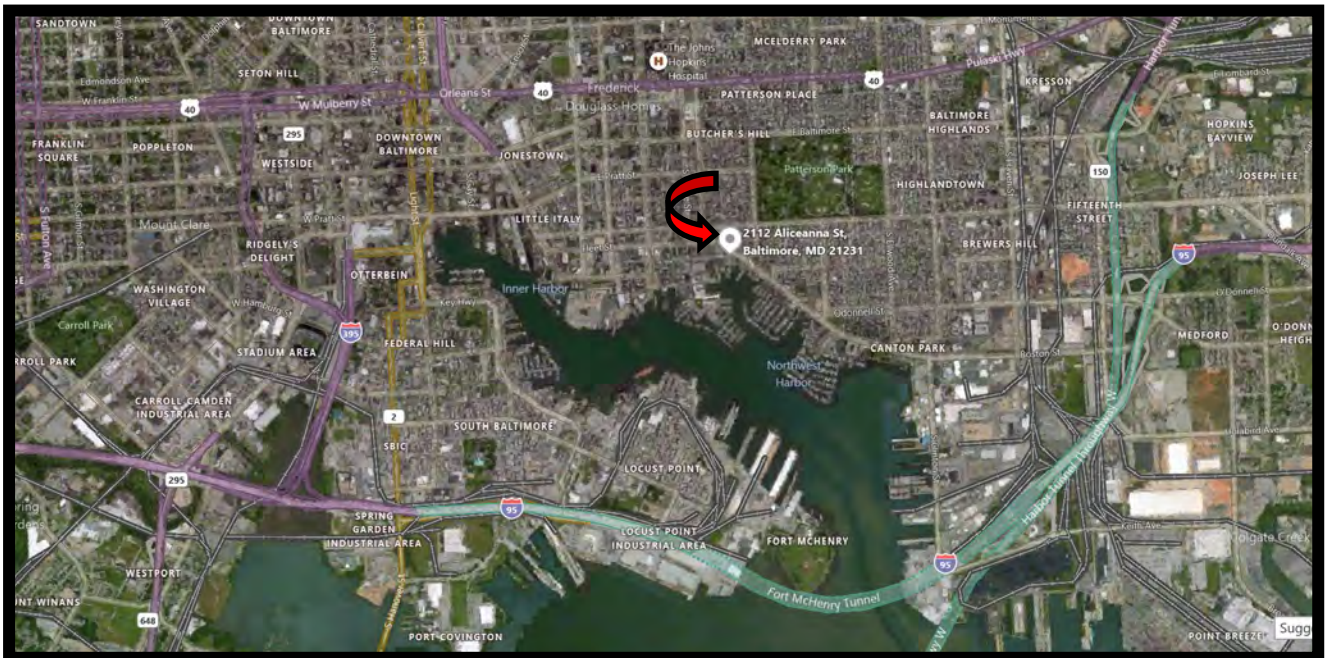
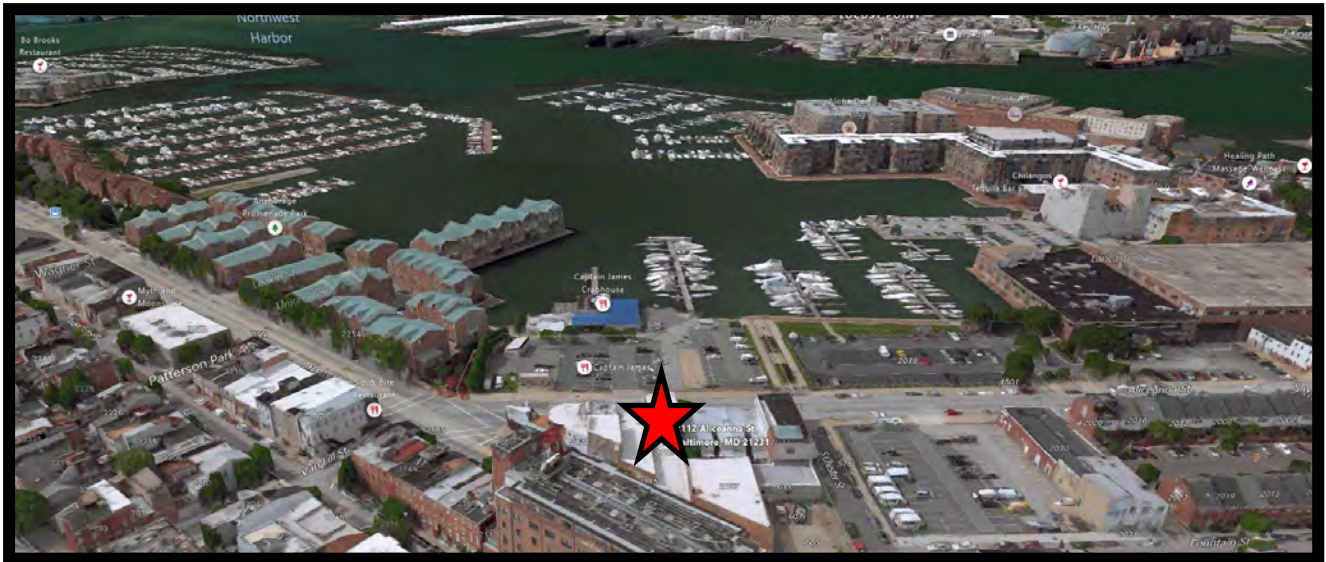


Gold And Company

Commercial Real Estate in the Baltimore Metropolitan Area

2112 Aliceanna St. Baltimore

Birds Eye View and Aerial



Jim Chivers / Gary Glover
Gold And Company, LLC
5601 Newbury St.
Baltimore, MD 21209

410.578.1300 (Office)

www.goldcommercial.net