



OFFICE SPACE FOR LEASE ALPINE BUILDING

12550 W EXPLORER DRIVE | BOISE, IDAHO 83713

COMMERCIAL



GREAT LOCATION
IN BOISE RESEARCH CENTER

3,261 RSF AVAILABLE

CONTACT

Al Marino, SIOR

208.947.0811

✉ al@tokcommercial.com

Karena Gilbert

208.947.0853

✉ karena@tokcommercial.com

CONTACT AGENT

FOR SHOWING



PROPERTY INFORMATION

Submarket:	West	Divisible:	Yes
Bldg Type:	Office	Lease Terms:	3-5 Years
Bldg Size:	22,941 SF	Lease Type:	Full Service
# of Floors:	2	TI Allowance:	Negotiable
Parking:	4:1000	Available:	Immediately

AVAILABLE SPACE

SPACE	RSF	RATE
Suite 160	3,261 SF	\$17.50/SF

PROPERTY HIGHLIGHTS

Professional business campus atmosphere in Boise Research Center.

Great access to Eagle, Meridian, Garden City & Downtown Boise.

Walking distance to coffee and fast casual dining.

Furniture included; 9 cubicles (9' x 7') and 1 cubicle (10' x 12') both with built-in furniture.

Fiber optics (Integra) available to the building.

Two blocks from the West YMCA.



OFFICE SPACE FOR LEASE **ALPINE BUILDING**

12550 W EXPLORER DRIVE | BOISE, IDAHO 83713

COMMERCIAL

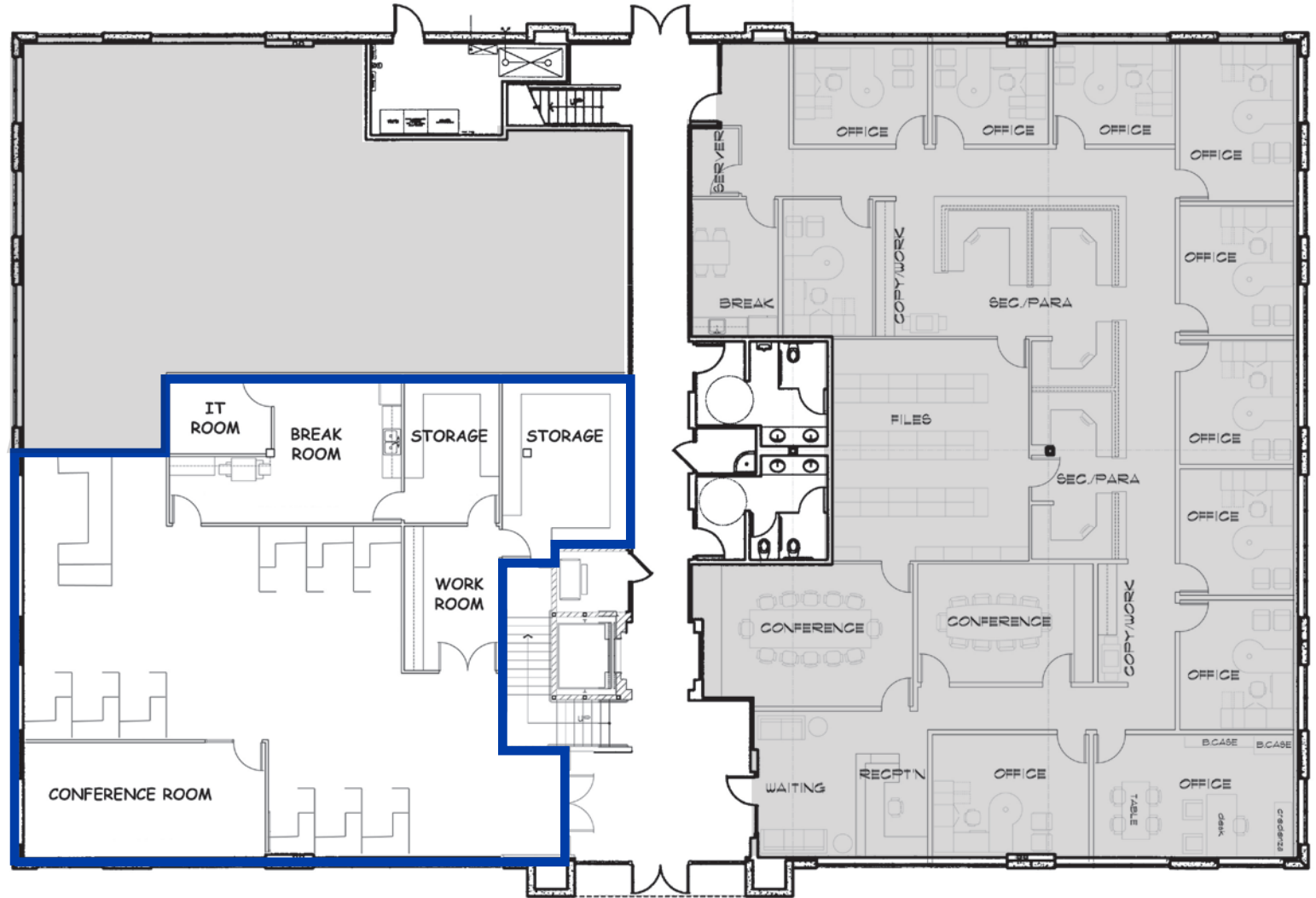
SUITE 160

3,261 SF

9 cubicles (9' x 7')

1 cubicle (10' x 12')

Built-in desks included





OFFICE SPACE FOR LEASE
ALPINE BUILDING

12550 W EXPLORER DRIVE | BOISE, IDAHO 83713





OFFICE SPACE FOR LEASE ALPINE BUILDING

12550 W EXPLORER DRIVE | BOISE, IDAHO 83713



Alpine Building

HOBBLE CREEK PARK

BOISE RESEARCH CENTER

- Peaceful walking paths throughout the park.
- Neighboring West YMCA and parks.
- Walking distance to restaurants.
- Great access to Chinden & Cloverdale.

