



OFFICE SPACE FOR SUBLEASE HOFF BUILDING

802 W. BANNOCK STREET, STE. 500 | BOISE, IDAHO 83702

COMMERCIAL



HIGHLY DESIRABLE
HISTORIC DOWNTOWN OFFICE

FOR LEASE | 4,339 SQUARE FEET

CONTACT ► Nick Schuitemaker 208.947.0802 ✉ nick@tokcommercial.com

PROPERTY INFORMATION

Submarket:	Downtown	Available:	30 Days Notice
Bldg Type:	Office	Sublease Term:	Ends 4/30/24
Bldg Size:	86,791 SF	Sublease Type:	Full Service
Parking:	Street	TI Allowance:	Negotiable

AVAILABLE SPACE

SPACE:	RSF:	SUBLEASE RATE:
Suite 500	4,339 SF	\$18.28/SF, FS

LISTING COMMENTS

Private outdoor patio spaces.

Highly desirable, downtown historic building.

Stunning fifth floor views of downtown and the Boise Foothills.

Prime location in the heart of downtown, near the State Capitol, State, Federal and City offices.

Walking distance to St. Luke's, restaurants, shopping, and other professional services.



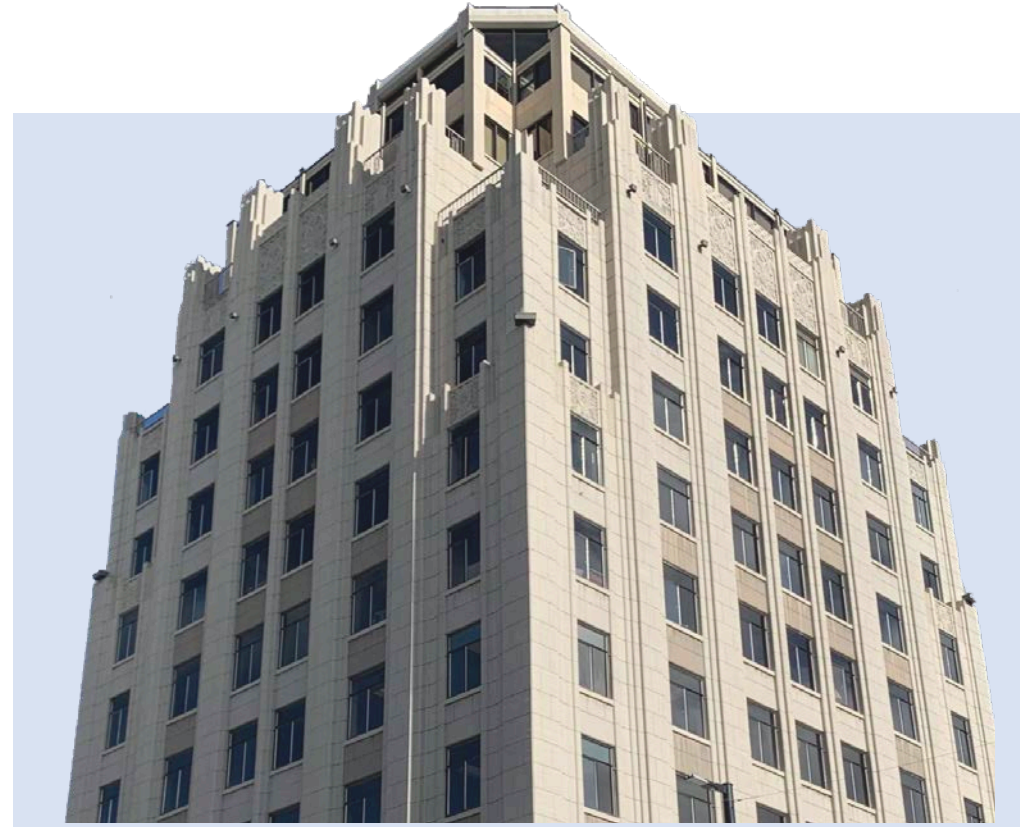
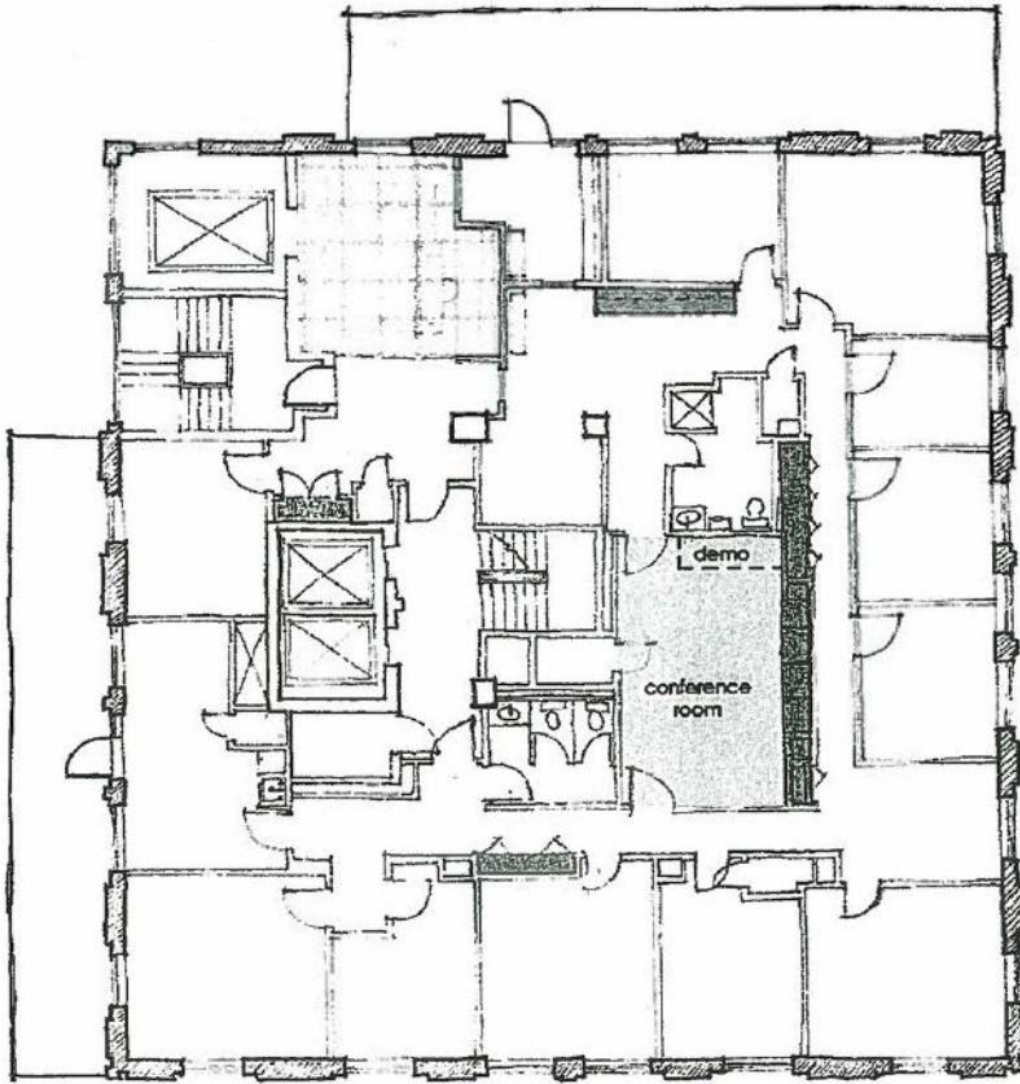
SUBMARKET: DOWNTOWN BOISE



OFFICE SPACE FOR SUBLEASE
HOFF BUILDING

802 W. BANNOCK STREET, STE. 500 | BOISE, IDAHO 83702

COMMERCIAL



FIFTH FLOOR

SUITE 500 | 4,339 RSF

\$18.28/SF | FULL SERVICE INCLUDING JANITORIAL



OFFICE SPACE FOR SUBLEASE HOFF BUILDING

802 W. BANNOCK STREET, STE. 500 | BOISE, IDAHO 83702

