



**TEAL PLACE**  
**24600 Detroit Road, Suite 100**  
Westlake, Ohio 44145



# OFFICE CONDO FOR SALE

Suite 100 - 6,207 SF

## SALE PRICE

\$549,000

## PROPERTY HIGHLIGHTS

- Located on the first floor next to Luca West, facing Detroit Road
- Prominent lobby exposure with double door entrance
- Dedicated exterior private entrance
- In-suite restrooms
- LED upgrades and fiber in place
- 5 per 1,000 parking ratio
- Zoned for office, medical or retail use
- Easy access to I-90

### CONNOR REDMAN

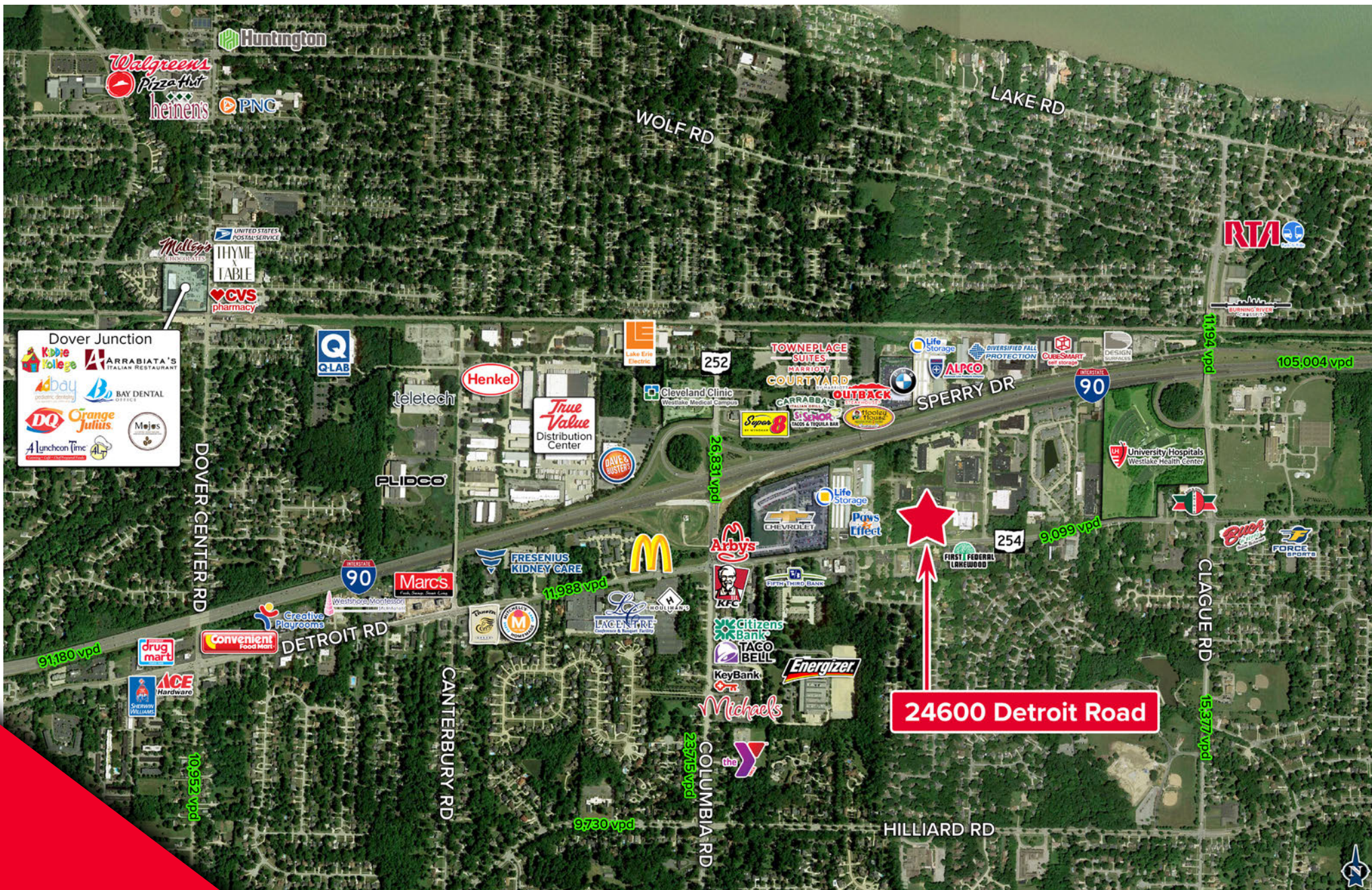
Sales Associate

+1 216 525 1493

credman@crescorealestate.com









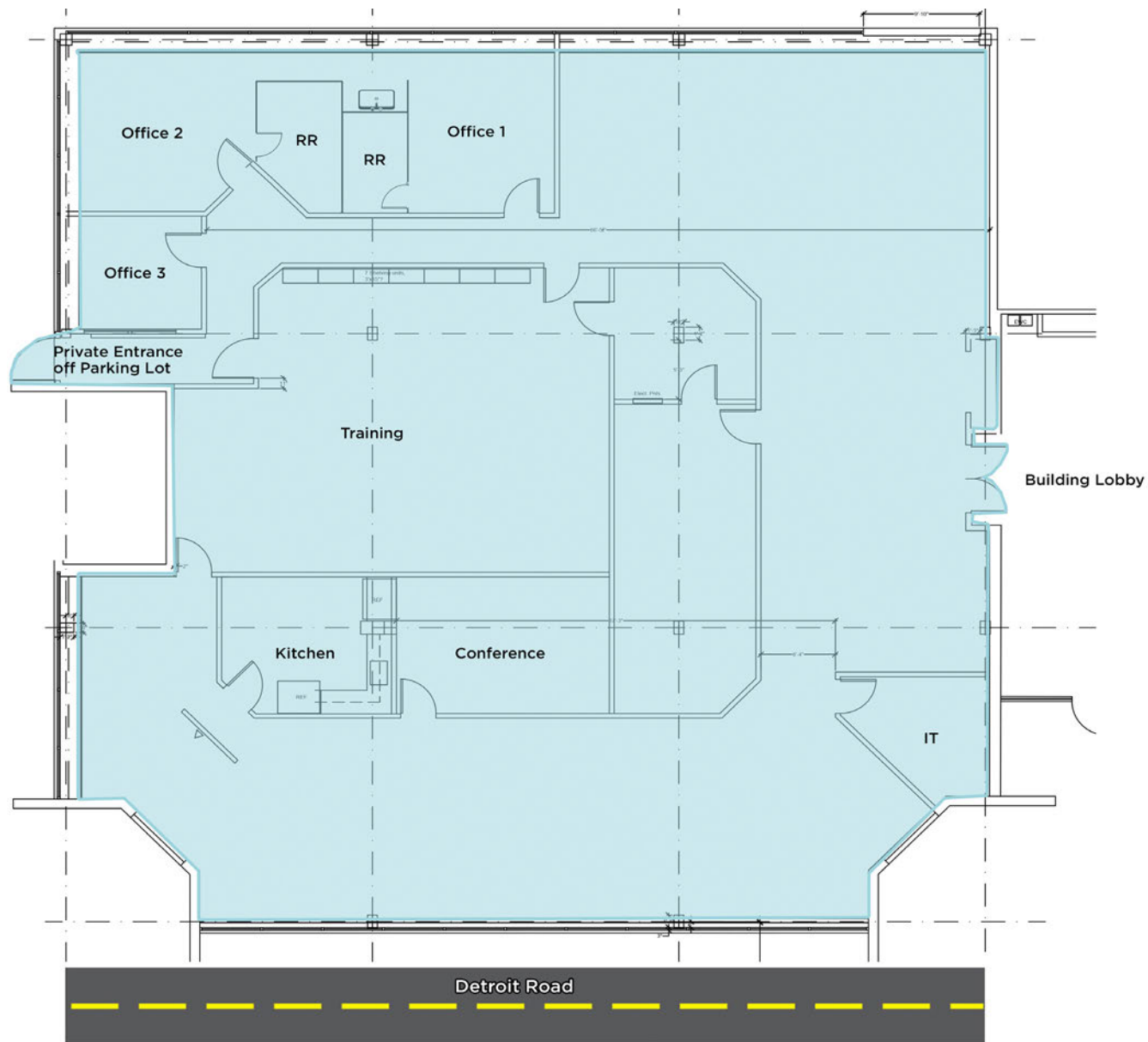








**FIRST FLOOR - SUITE 100**  
**6,207 SF OFFICE CONDO FOR SALE**



**CONNOR REDMAN**

Sales Associate

+1 216 525 1493

credman@crescorealestate.com





## CONNOR REDMAN

Sales Associate

[credman@crescorealestate.com](mailto:credman@crescorealestate.com)

+1 216 525 1493



3 Summit Park Drive, Suite 200  
Cleveland, Ohio 44131  
Main +1 216 520 1200  
Fax +1 216 520 1828  
**[crescorealestate.com](http://crescorealestate.com)**

*Independently Owned and Operated / A Member of the Cushman & Wakefield Alliance*

Cushman & Wakefield Copyright 2020. No warranty or representation, express or implied, is made to the accuracy or completeness of the information contained herein, and same is submitted subject to errors, omissions, change of price, rental or other conditions, withdrawal without notice, and to any special listing conditions imposed by the property owner(s). As applicable, we make no representation as to the condition of the property (or properties) in question.