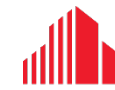


FOR LEASE



CUSHMAN &
WAKEFIELD

BOERKE

10345 N PORT WASHINGTON ROAD, MEQUON

OFFICE



Terence McMahon, SIOR

Principal
+1 414 203 3047

tmcMahon@boerke.com

J. Cody Ziegler

Real Estate Advisor
+1 414 269 2539

cziegler@boerke.com

PROPERTY OVERVIEW

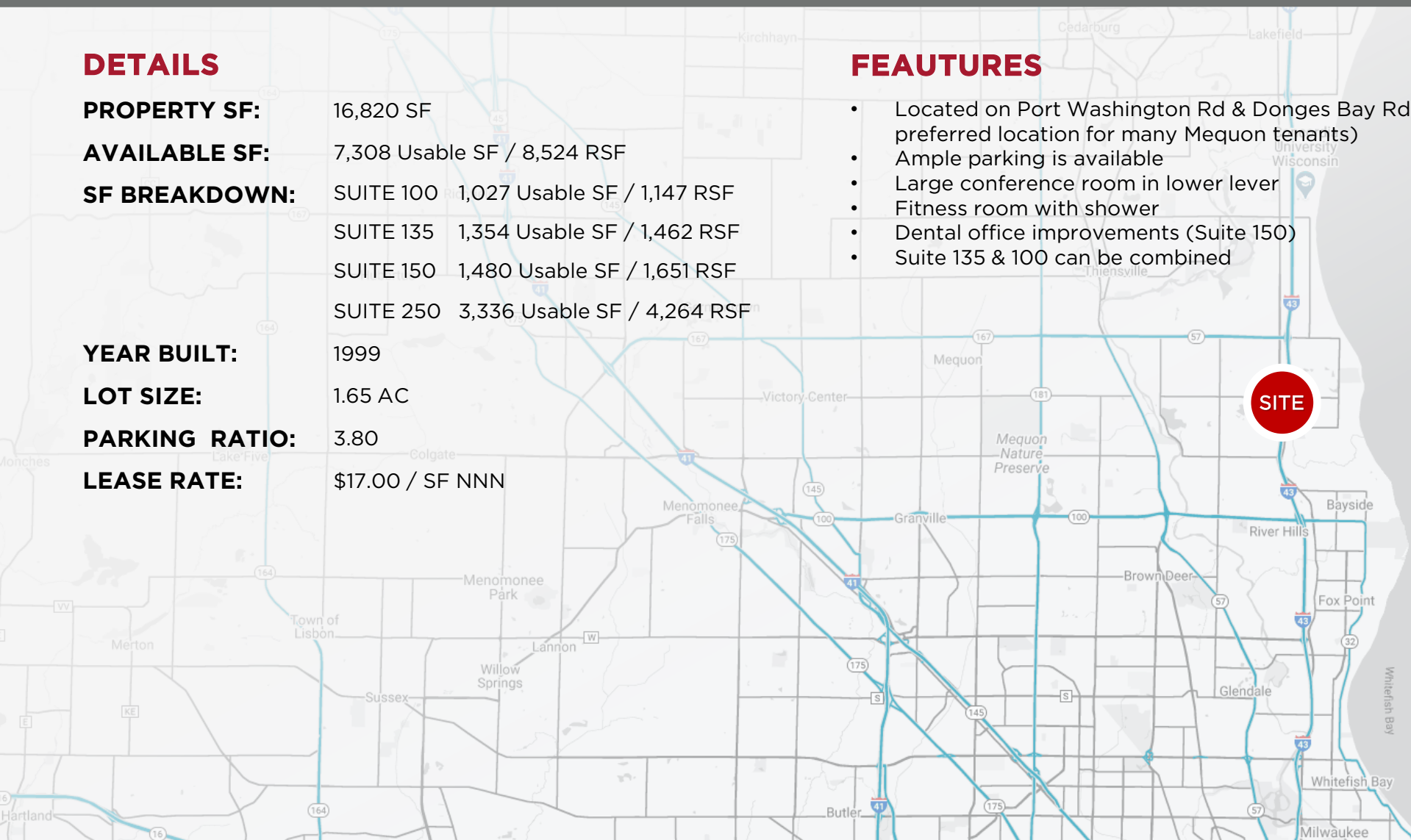
10345 N PORT WASHINGTON ROAD, MEQUON

DETAILS

PROPERTY SF:	16,820 SF								
AVAILABLE SF:	7,308 Usable SF / 8,524 RSF								
SF BREAKDOWN:	<table><tr><td>SUITE 100</td><td>1,027 Usable SF / 1,147 RSF</td></tr><tr><td>SUITE 135</td><td>1,354 Usable SF / 1,462 RSF</td></tr><tr><td>SUITE 150</td><td>1,480 Usable SF / 1,651 RSF</td></tr><tr><td>SUITE 250</td><td>3,336 Usable SF / 4,264 RSF</td></tr></table>	SUITE 100	1,027 Usable SF / 1,147 RSF	SUITE 135	1,354 Usable SF / 1,462 RSF	SUITE 150	1,480 Usable SF / 1,651 RSF	SUITE 250	3,336 Usable SF / 4,264 RSF
SUITE 100	1,027 Usable SF / 1,147 RSF								
SUITE 135	1,354 Usable SF / 1,462 RSF								
SUITE 150	1,480 Usable SF / 1,651 RSF								
SUITE 250	3,336 Usable SF / 4,264 RSF								
YEAR BUILT:	1999								
LOT SIZE:	1.65 AC								
PARKING RATIO:	3.80								
LEASE RATE:	\$17.00 / SF NNN								

FEATURES

- Located on Port Washington Rd & Donges Bay Rd (a preferred location for many Mequon tenants)
- Ample parking is available
- Large conference room in lower level
- Fitness room with shower
- Dental office improvements (Suite 150)
- Suite 135 & 100 can be combined



Terence McMahon, SIOR

Principal
+1 414 203 3047
tmcmahon@boerke.com

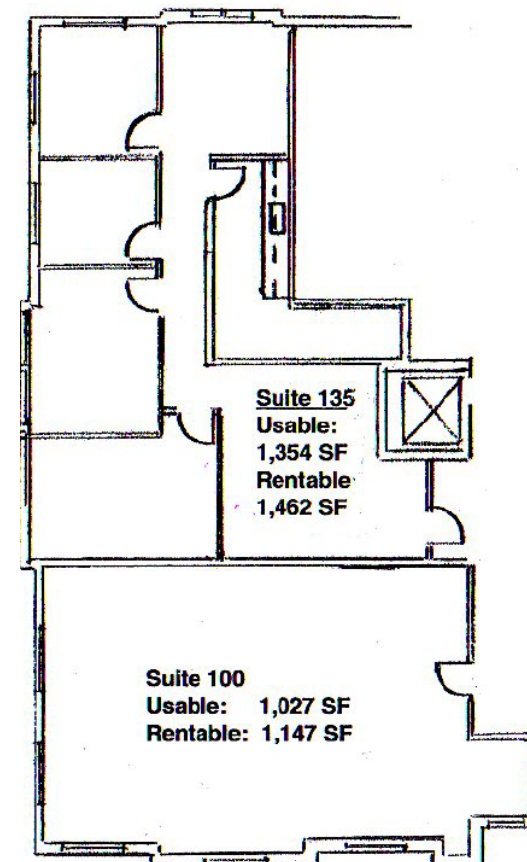
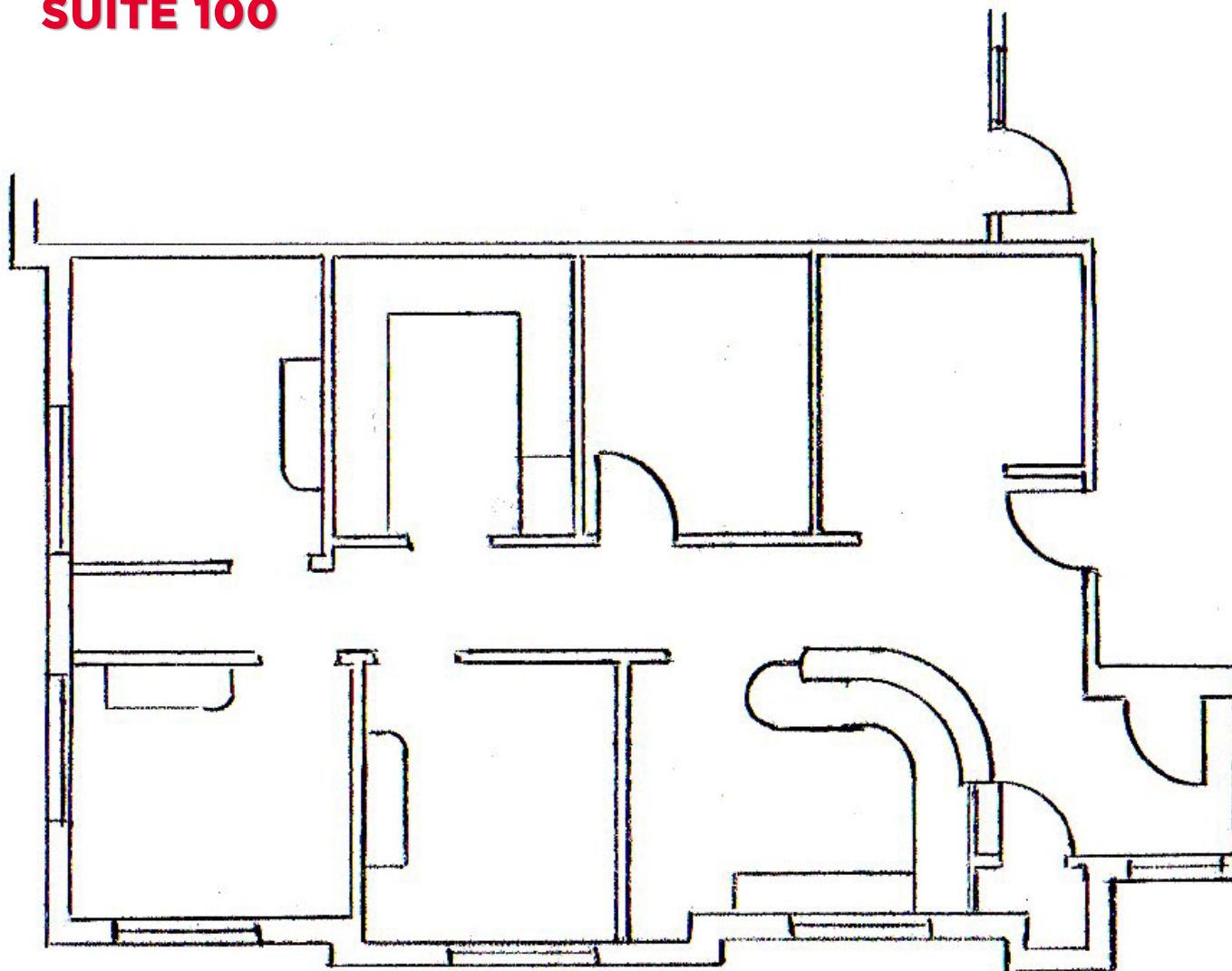
J. Cody Ziegler

Real Estate Advisor
+1 414 269 2539
cziegler@boerke.com

SITE PLAN

10345 N PORT WASHINGTON ROAD, MEQUON

SUITE 100



- Suites 100 & 135 can be combined for 1,381 Usable SF / 2,609 RSF

Terence McMahon, SIOR

Principal
+1 414 203 3047

tmcMahon@boerke.com

J. Cody Ziegler

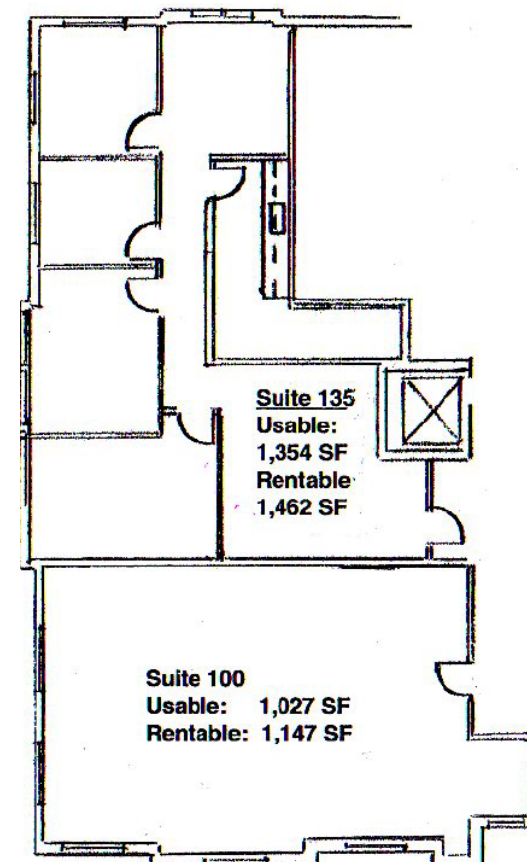
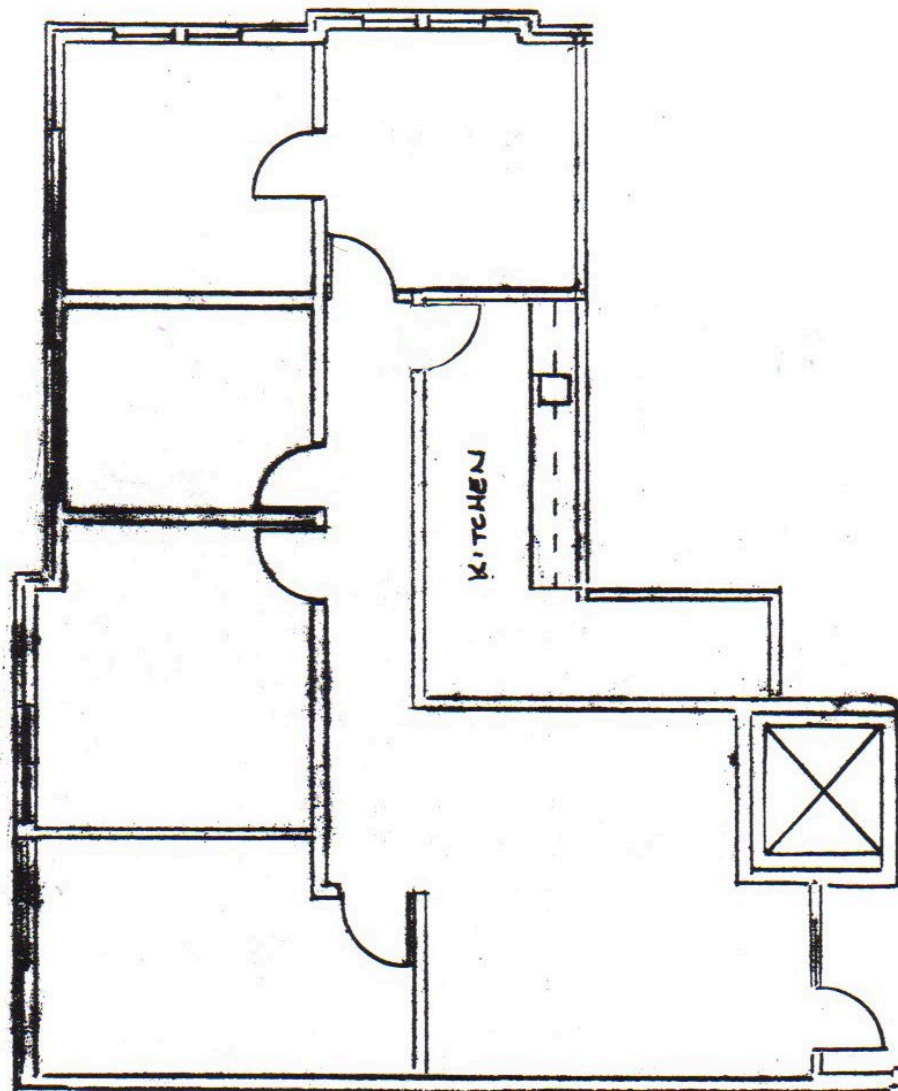
Real Estate Advisor
+1 414 269 2539

cziegler@boerke.com

SITE PLAN

10345 N PORT WASHINGTON ROAD, MEQUON

SUITE 135



- Suites 100 & 135 can be combined for
1,381 Usable SF / 2,609 RSF

Terence McMahon, SIOR

Principal
+1 414 203 3047
tcmahon@boerke.com

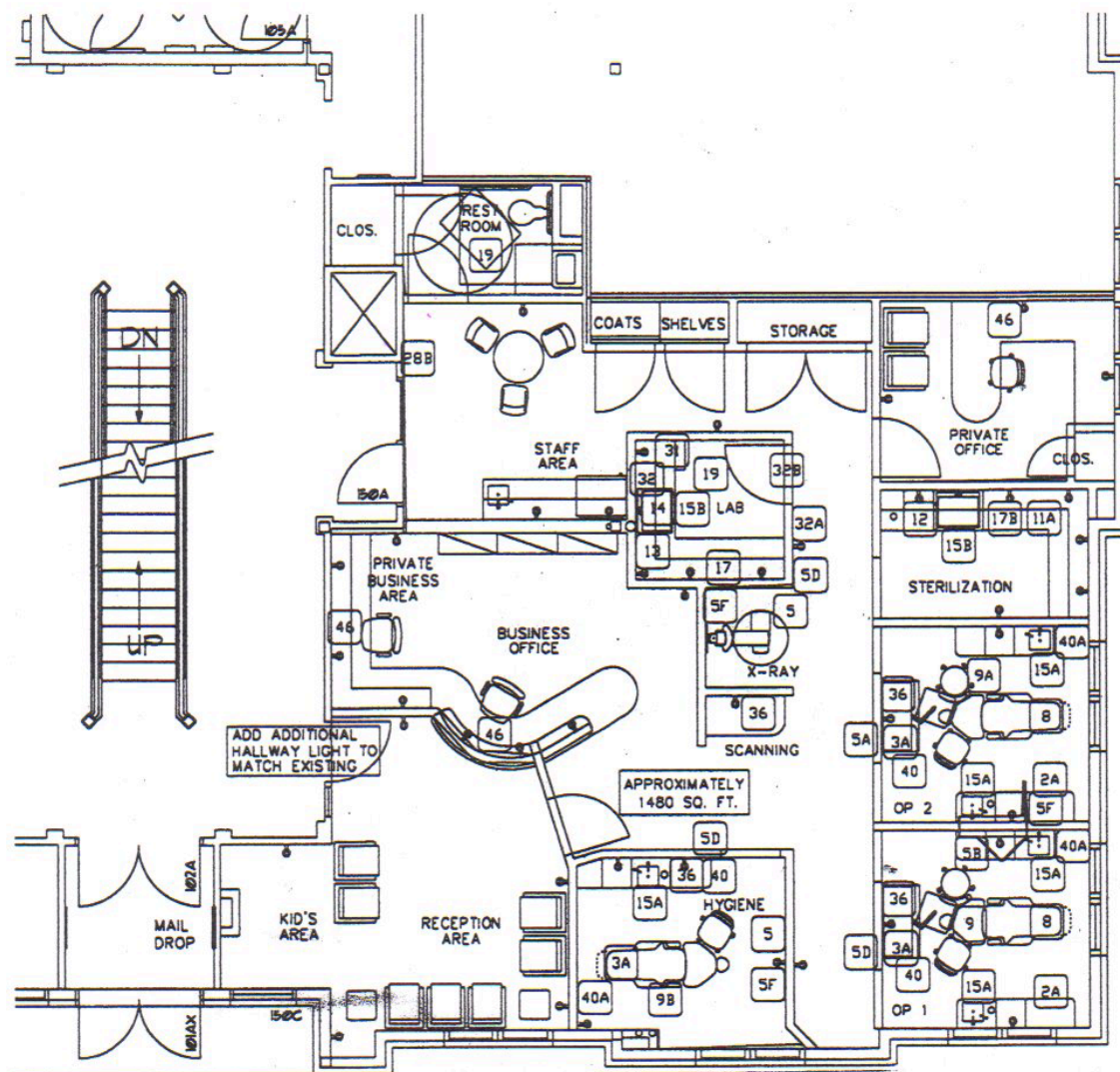
J. Cody Ziegler

Real Estate Advisor
+1 414 269 2539
cziegler@boerke.com

SITE PLAN

10345 N PORT WASHINGTON ROAD, MEQUON

SUITE 150



Terence McMahon, SIOR

Principal
+1 414 203 3047
tmcmahon@boerke.com

J. Cody Ziegler

Real Estate Advisor
+1 414 269 2539
cziegler@boerke.com

10345 N PORT WASHINGTON ROAD, MEQUON



The floor plan illustrates the layout of the 2nd floor, divided into three main sections. The left section (red) contains rooms 1A-92, 1B-92, 1C-22, 1C-25, 1C-38, 1B-99, 1B-63, 1B-43, 1B-3, 1A-63, 1A-33, 1A-27, 2A-21, and 2A-27. The central section (blue) includes rooms 2B-93, 2B-97, 2B-57, 2B-41, 2B-33, 2B-21, 2A-92, 2A-97, 2A-27, 2B-31, 2B-22, 2B-23, 2B-24, 2B-25, 2B-26, 2B-27, 2B-28, 2B-29, 2B-30, 2B-31, 2B-32, 2B-33, 2B-34, 2B-35, 2B-36, 2B-37, 2B-38, 2B-39, 2B-40, 2B-41, 2B-42, 2B-43, 2B-44, 2B-45, 2B-46, 2B-47, 2B-48, 2B-49, 2B-50, 2B-51, 2B-52, 2B-53, 2B-54, 2B-55, 2B-56, 2B-57, 2B-58, 2B-59, 2B-60, 2B-61, 2B-62, 2B-63, 2B-64, 2B-65, 2B-66, 2B-67, 2B-68, 2B-69, 2B-70, 2B-71, 2B-72, 2B-73, 2B-74, 2B-75, 2B-76, 2B-77, 2B-78, 2B-79, 2B-80, 2B-81, 2B-82, 2B-83, 2B-84, 2B-85, 2B-86, 2B-87, 2B-88, 2B-89, 2B-90, 2B-91, 2B-92, 2B-93, 2B-94, 2B-95, 2B-96, 2B-97, 2B-98, 2B-99, 2B-100. The right section (green) includes rooms 3A-23, 3A-27, 3A-30, 3B-5, 3B-26, 3B-33, 3B-36, 3B-37, 3B-38, 3B-39, 3B-40, 3B-41, 3B-42, 3B-43, 3B-44, 3B-45, 3B-46, 3B-47, 3B-48, 3B-49, 3B-50, 3B-51, 3B-52, 3B-53, 3B-54, 3B-55, 3B-56, 3B-57, 3B-58, 3B-59, 3B-60, 3B-61, 3B-62, 3B-63, 3B-64, 3B-65, 3B-66, 3B-67, 3B-68, 3B-69, 3B-70, 3B-71, 3B-72, 3B-73, 3B-74, 3B-75, 3B-76, 3B-77, 3B-78, 3B-79, 3B-80, 3B-81, 3B-82, 3B-83, 3B-84, 3B-85, 3B-86, 3B-87, 3B-88, 3B-89, 3B-90, 3B-91, 3B-92, 3B-93, 3B-94, 3B-95, 3B-96, 3B-97, 3B-98, 3B-99, 3B-100. The plan also shows various corridors, stairwells, and specialized rooms like the kitchen, restrooms, and a central reception area.

J. Cody Ziegler
Real Estate Advisor
+1 414 269 2539
chiegler@boerke.com

STATE OF WISCONSIN

Disclosure To Non-Residential Customers

Prior to negotiating on your behalf the brokerage firm, or an agent associated with the firm, must provide you the following disclosure statement:

DISCLOSURE TO CUSTOMERS

You are a customer of the brokerage firm (hereinafter Firm). The Firm is either an agent of another party in the transaction or a subagent of another firm that is the agent of another party in the transaction. A broker or a salesperson acting on behalf of the Firm may provide brokerage services to you. Whenever the Firm is providing brokerage services to you, the Firm and its brokers and salespersons (hereinafter Agents) owe you, the customer, the following duties:

- (a) The duty to provide brokerage services to you fairly and honestly.
- (b) The duty to exercise reasonable skill and care in providing brokerage services to you.
- (c) The duty to provide you with accurate information about market conditions within a reasonable time if you request it, unless disclosure of the information is prohibited by law.
- (d) The duty to disclose to you in writing certain Material Adverse Facts about a property, unless disclosure of the information is prohibited by law. (See Definition of Material Adverse Facts below).
- (e) The duty to protect your confidentiality. Unless the law requires it, the Firm and its Agents will not disclose your confidential information or the confidential information of other parties.
- (f) The duty to safeguard trust funds and proposals in an objective and unbiased manner and disclose the advantages and disadvantages of the proposals. other property held by the Firm or its Agents.
- (g) The duty, when negotiating, to present contract proposals in an objective and unbiased manner and disclose the advantages and disadvantages of the proposals.
- Please review this information carefully. An Agent of the Firm can answer your questions about brokerage services, but if you need legal advice, tax advice, or a professional home inspection, contact an attorney, tax advisor, or home inspector. This disclosure is required by section 452.135 of the Wisconsin statutes and is for information only. It is a plain-language summary of the duties owed to a customer under section 452.133(1) of the Wisconsin statutes.

CONFIDENTIALITY NOTICE TO CUSTOMERS

The Firm and its Agents will keep confidential any information given to the Firm or its Agents in confidence, or any information obtained by the Firm and its Agents that a reasonable person would want to be kept confidential, unless the information must be disclosed by law or you authorize the Firm to disclose particular information. The Firm and its Agents shall continue to keep the information confidential after the Firm is no longer providing brokerage services to you.

- The following information is required to be disclosed by law:
 1. Material Adverse Facts, as defined in Wis. Stat. § 452.01(5g) (see "Definition of Material Adverse Facts" below).
 2. Any facts known by the Firm or its Agents that contradict any information included in a written inspection report on the property or real estate that is the subject of the transaction.

To ensure that the Firm and its Agents are aware of what specific information you consider confidential, you may list that information below. At a later time, you may also provide the Firm or its Agents with other Information you consider to be confidential.

CONFIDENTIAL INFORMATION:

NON- CONFIDENTIAL INFORMATION *(the following information may be disclosed by the Firm and its Agents):*

(Insert information you authorize to be disclosed, such as financial qualification information.)

DEFINITION OF MATERIAL ADVERSE FACTS

A "Material Adverse Fact" is defined in Wis. Stat. § 452.01(5g) as an Adverse Fact that a party indicates is of such significance, or that is generally recognized by a competent licensee as being of such significance to a reasonable party, that it affects or would affect the party's decision to enter into a contract or agreement concerning a transaction or affects or would affect the party's decision about the terms of such a contract or agreement.

An "Adverse Fact" is defined in Wis. Stat. § 452.01(1e) as a condition or occurrence that a competent licensee generally recognizes will significantly and adversely affect the value of the property, significantly reduce the structural integrity of improvements to real estate, or present a significant health risk to occupants of the property; or information that indicates that a party to a transaction is not able to or does not intend to meet his or her obligations under a contract or agreement made concerning the transaction.

NOTICE ABOUT SEX OFFENDER REGISTRY

You may obtain information about the sex offender registry and persons registered with the registry by contacting the Wisconsin Department of Corrections on the Internet at <http://www.doc.wi.gov> or by telephone at 608-240-5830.