

OFFICE SPACE
FOR LEASE



Milwaukee
**Intermodal
Station**



433 W ST. PAUL AVENUE

Station Naming Rights / Branding Options Available

FEATURES

Available office space is located above Milwaukee's transportation hub, the Milwaukee Intermodal Station.

Transportation services include Amtrak, Greyhound and local/regional bus services.

Unique office opportunity for companies that benefit from quick access to regional travel options.

New HVAC system planned for 2019.

On-site food and convenience store. WISDOT on 3rd Floor.



PROMINENT
BUILDING &
MONUMENT
SIGNAGE
AVAILABLE

PROPERTY OVERVIEW

ADDRESS:

433 W St. Paul Avenue

AVAILABLE SPACE:

Entire 2nd Floor: 18,558 RSF

Minimum Divisible: 1,628 RSF

FLOORS:

3

LEASE RATE:

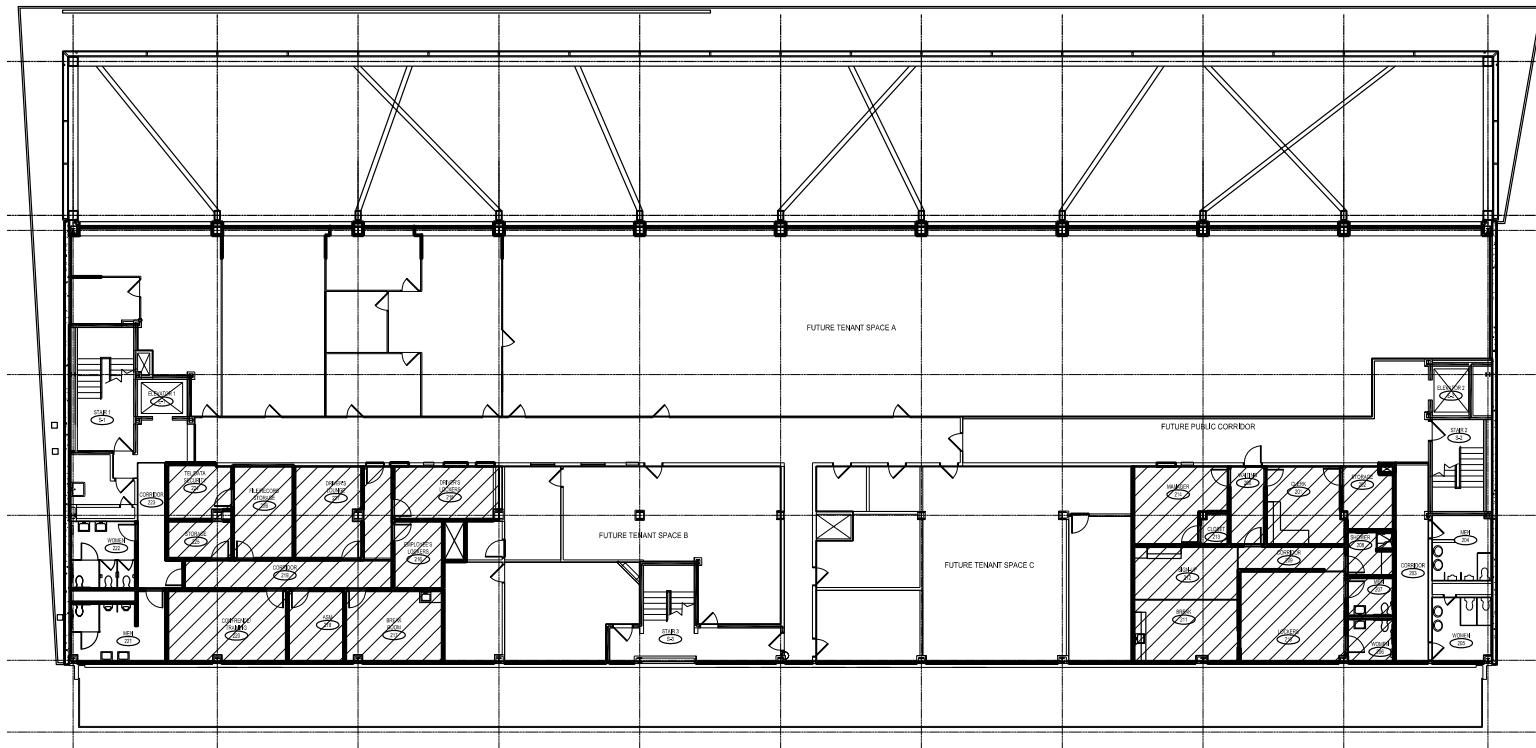
\$21.00 / SF (Modified Gross)

**Signage & branding not included in rate*

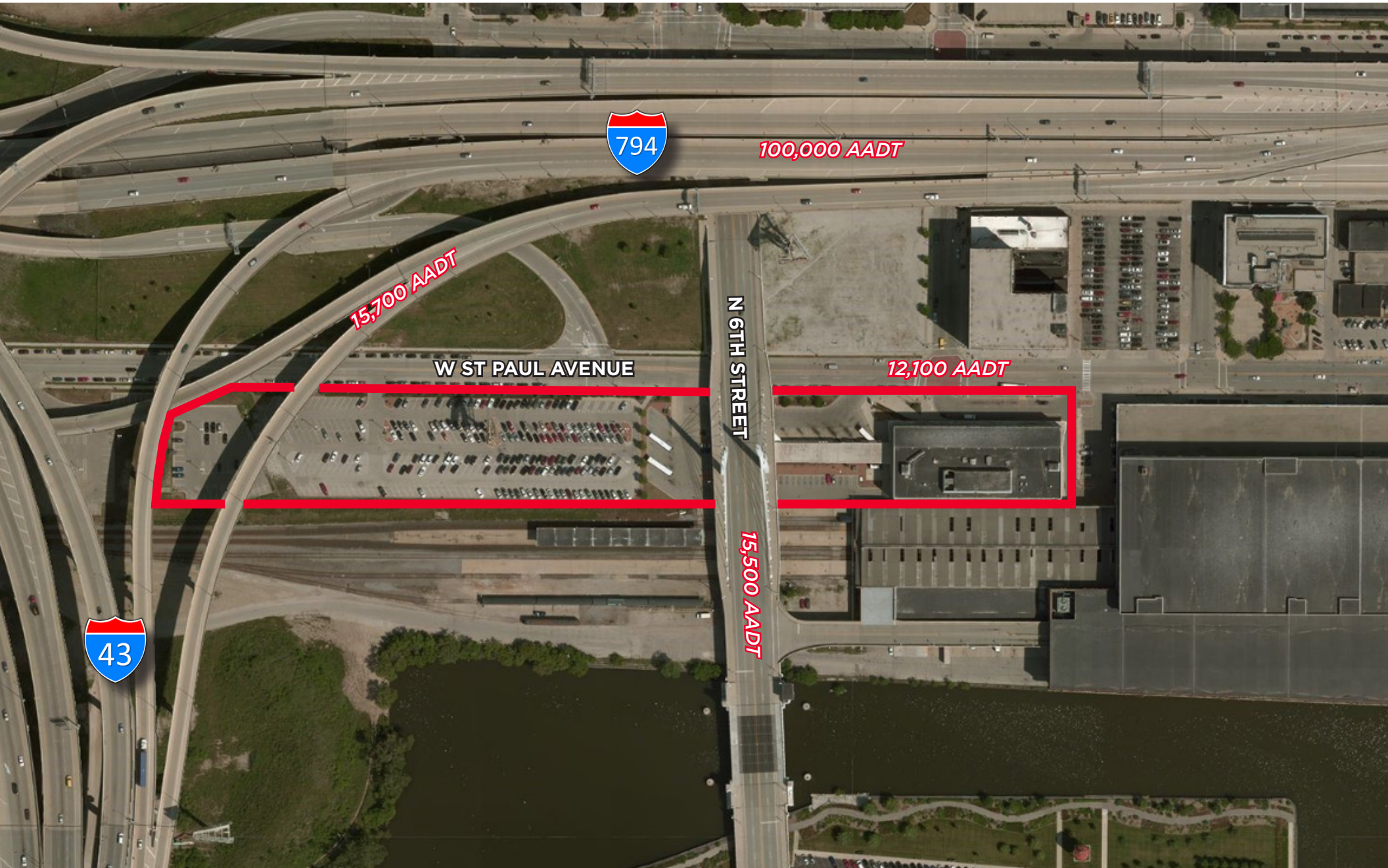
**Naming rights are subject to approval of WisDOT*

ST PAUL AVENUE | 12,100 AADT

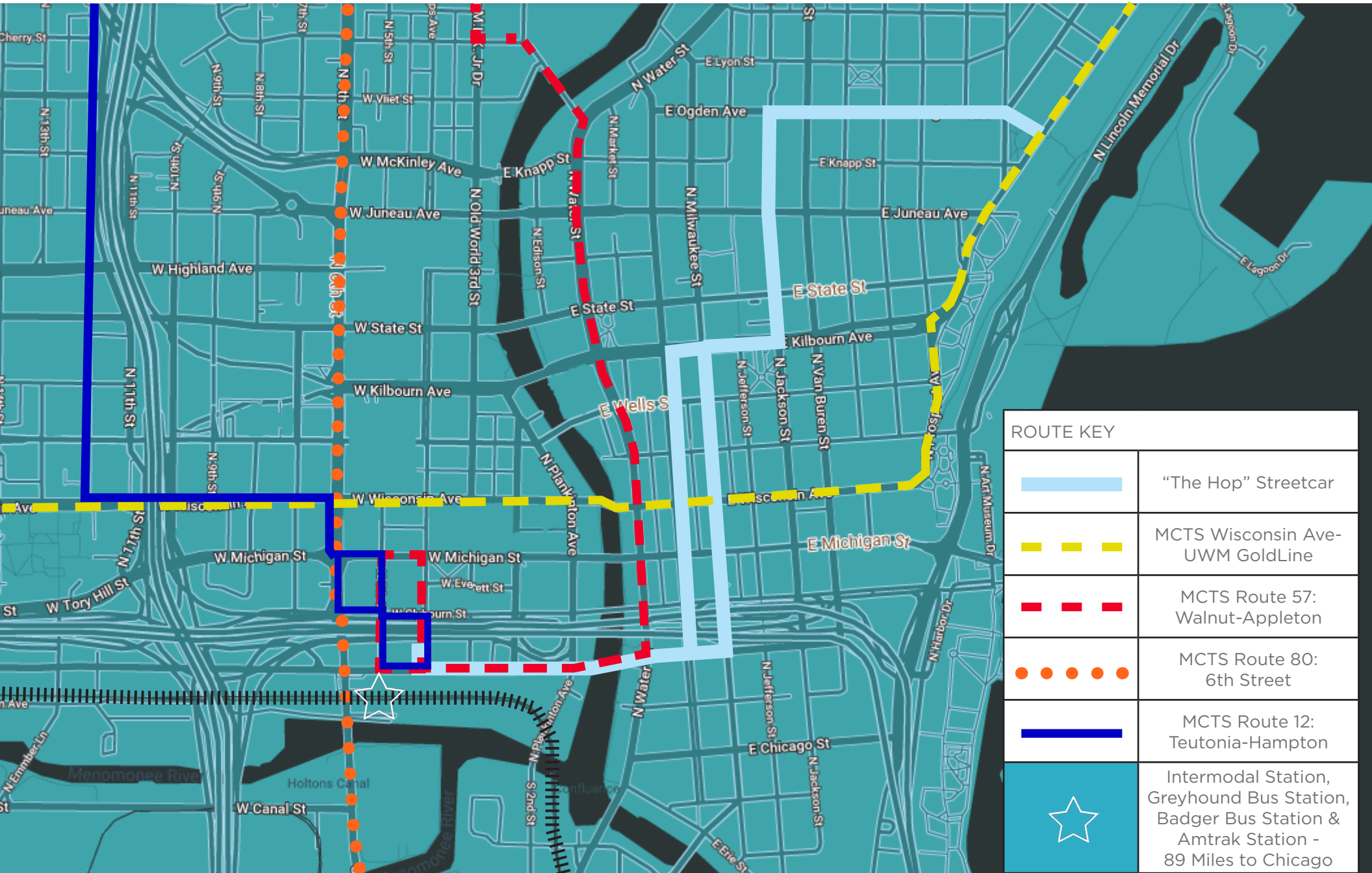
↑ S 6TH STREET | 15,500 AADT

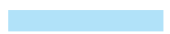







SITE MAP



TRANSPORTATION MAP



ROUTE KEY	
	"The Hop" Streetcar
	MCTS Wisconsin Ave-UWM GoldLine
	MCTS Route 57: Walnut-Appleton
	MCTS Route 80: 6th Street
	MCTS Route 12: Teutonia-Hampton
	Intermodal Station, Greyhound Bus Station, Badger Bus Station & Amtrak Station - 89 Miles to Chicago

JIM CAVANAUGH

Principal

414.253.3950

jcavanaugh@boerke.com

ANDREW JENSEN JR., SIOR

Principal

414.203.3011

ajensen@boerke.com



**CUSHMAN &
WAKEFIELD**

BOERKE