

# FOR SALE OR BUILD-TO-SUIT

Downtown Milwaukee Development Site



CUSHMAN &  
WAKEFIELD

BOERKE

Prime  
Development Site  
with over 300'  
of Milwaukee River  
Frontage



# 1330 & 1420

N. MARTIN LUTHER KING JR. DR.  
MILWAUKEE, WISCONSIN

Jim Cavanaugh  
Principal  
414.253.3950  
jcavanaugh@boerke.com

Andrew Jensen Jr., SIOR  
Principal  
414.203.3011  
ajensen@boerke.com

Katie Brueske  
Real Estate Advisor  
414.310.5723  
kbrueske@boerke.com



## PROPERTY OVERVIEW

	LOT A	LOT B
<b>ADDRESS:</b>	1330 N MLK JR. DR.	1420 N MLK JR. DR.
<b>LOT SIZE:</b>	1.10 Acre	2.04 Acre
<b>ZONING:</b>	RED	RED
<b>TAX KEY:</b>	361-1993-000	361-1991-100
<b>TAXES (2019):</b>	\$52,855.66	\$51,017.06
<b>CURRENT USE:</b>	Vacant Land	Parking Lot*
<b>PRICE:</b>	Contact Broker for Pricing	

\* Deeded parking obligations exist for Lot B only. Lot A is unencumbered.

## PROPERTY FEATURES

- Prime development site with many potential uses; office, hotel, multi-family
- Build-to-suit opportunities available
- Approximately 300 feet of Milwaukee River frontage
- Milwaukee Redevelopment Zoning
- On planned future expansion route for The Hop MKE Streetcar
- Great location, many new developments surrounding property
- Blocks away from the new Deer District
- Convenient freeway access via McKinley Ave

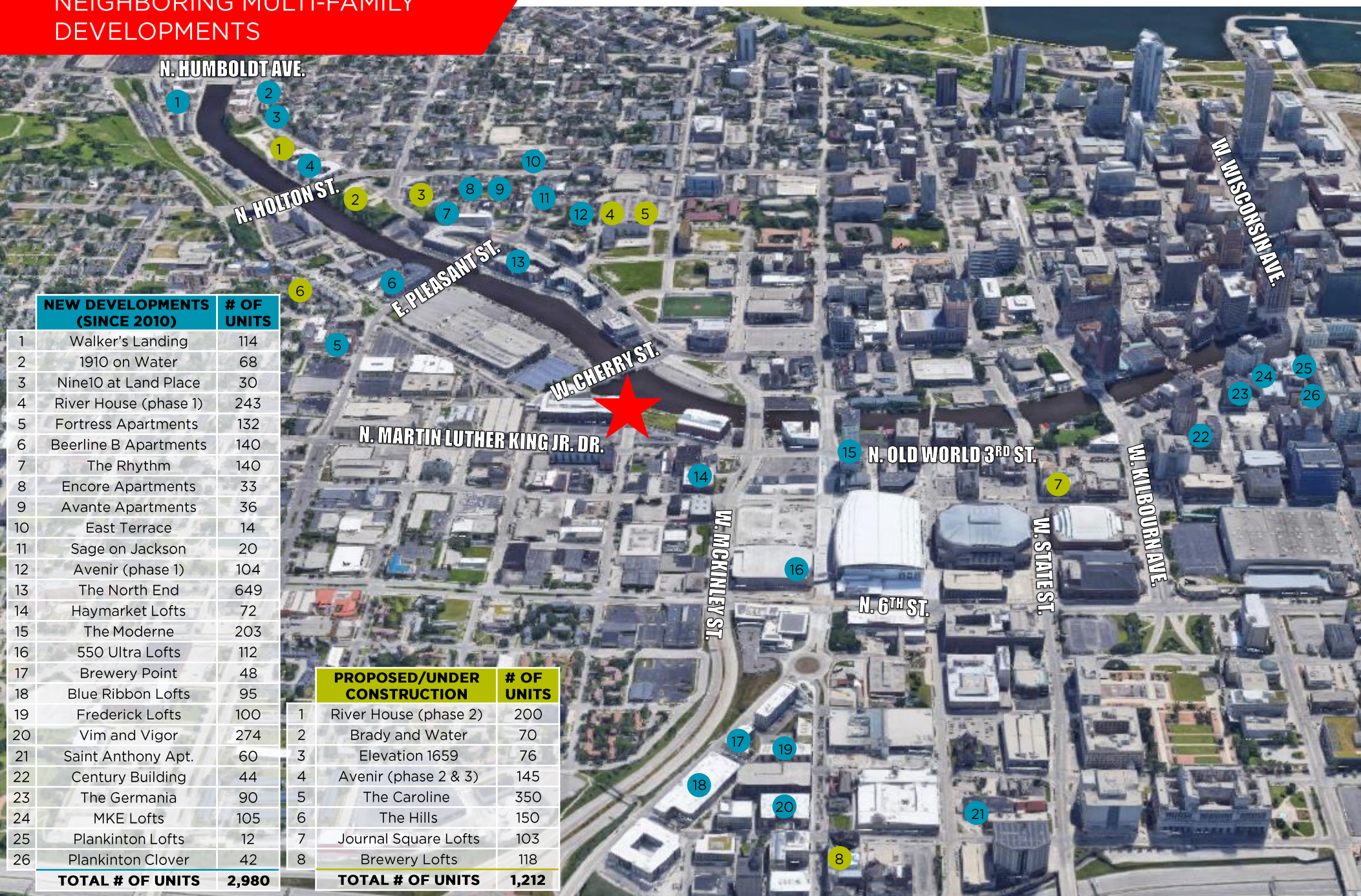


## NEIGHBORHOOD AMENITIES





## NEIGHBORING MULTI-FAMILY DEVELOPMENTS

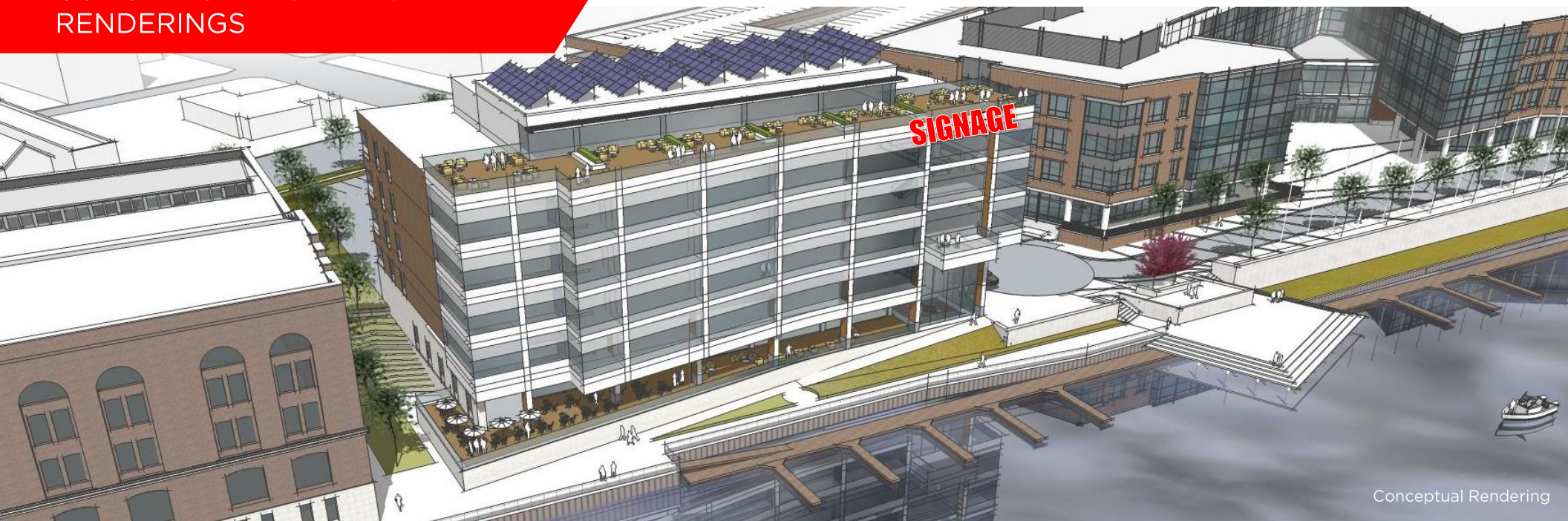


The Boerke Company, Inc. / Independently Owned and Operated / A Member of the Cushman & Wakefield Alliance

Cushman & Wakefield Copyright 2020. No warranty or representation, express or implied, is made to the accuracy or completeness of the information contained herein, and same is submitted subject to errors, omissions, change of price, rental or other conditions, withdrawal without notice, and to any special listing conditions imposed by the property owner(s). As applicable, we make no representation as to the condition of the property (or properties) in question.



CONCEPTUAL BUILDING  
RENDERINGS



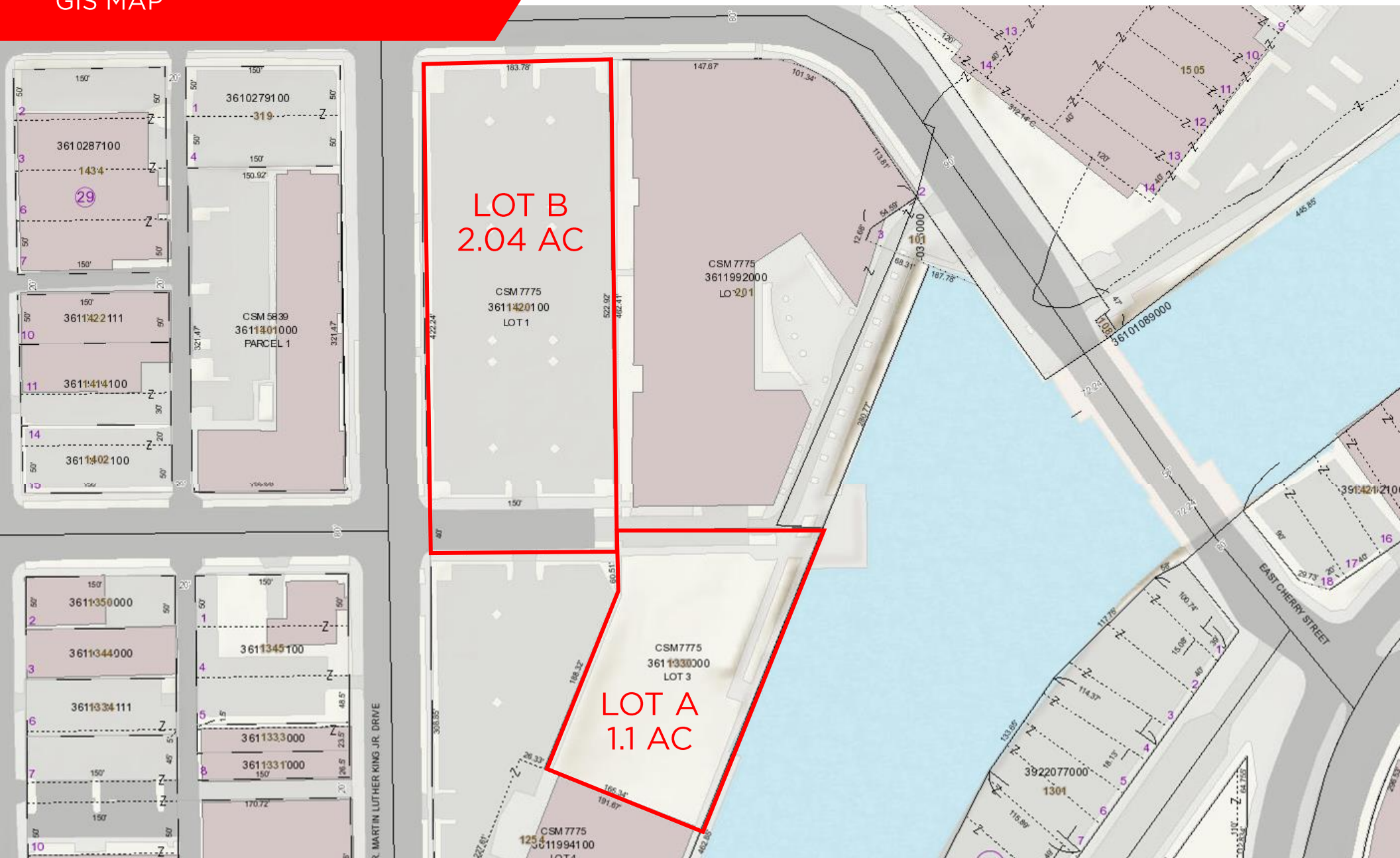


# CONCEPTUAL SITE PLAN

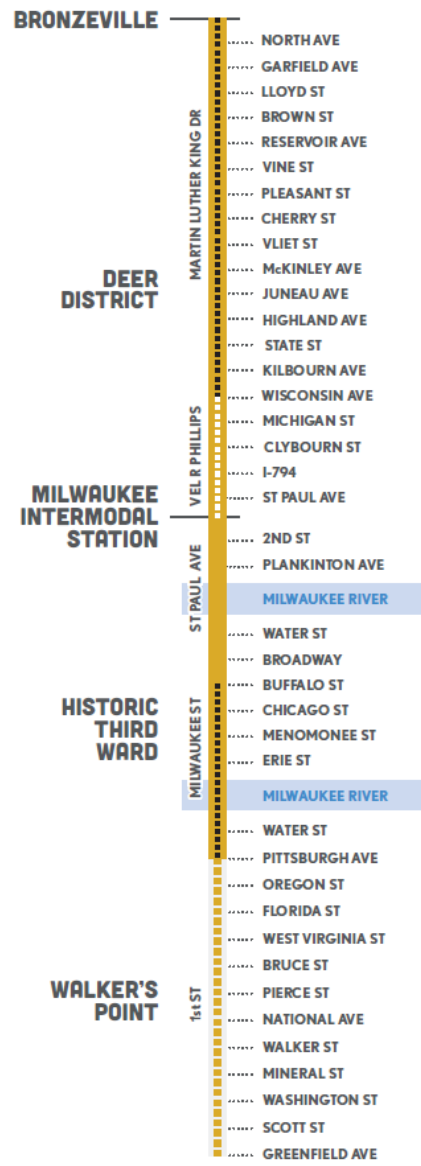




# GIS MAP



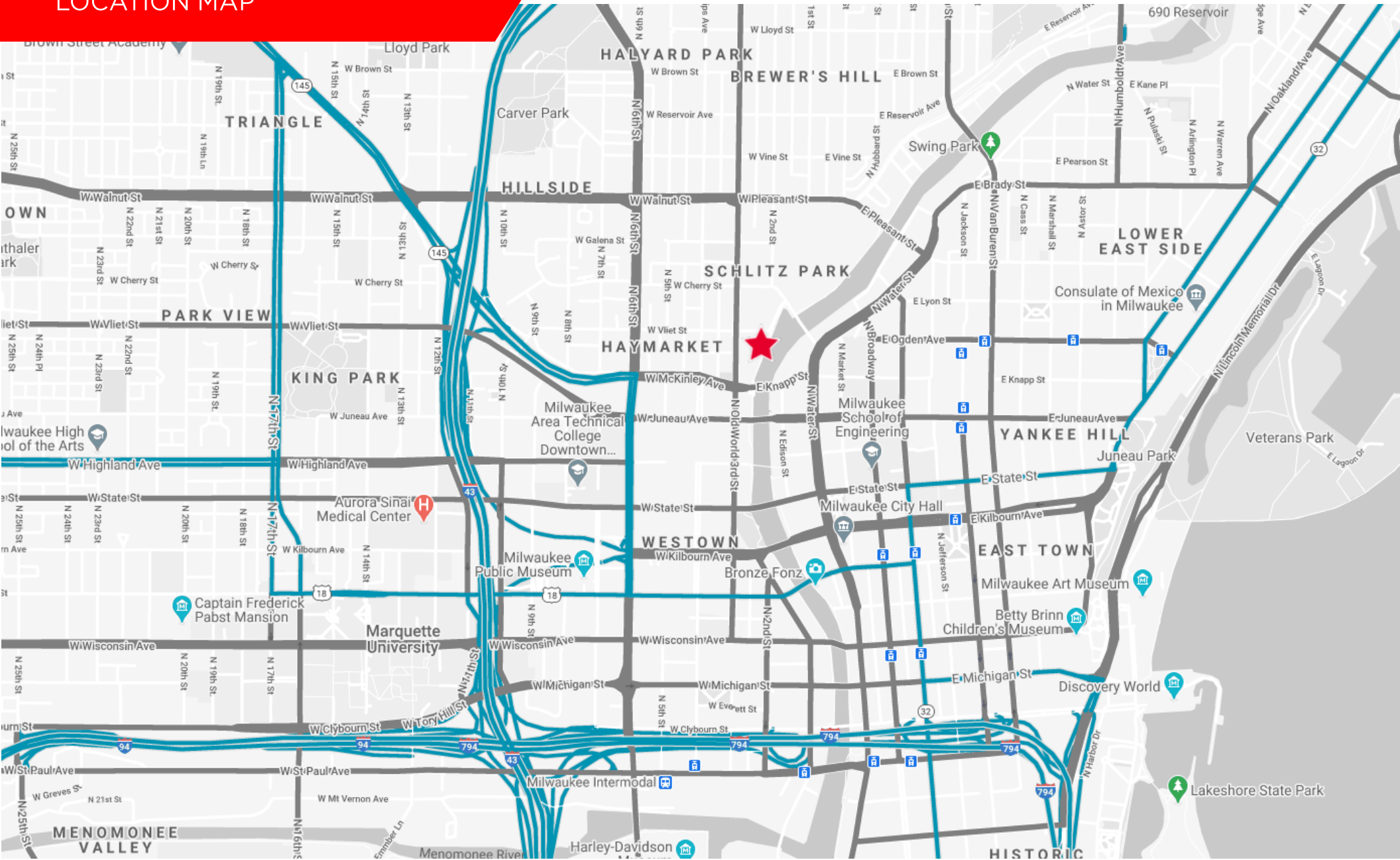
THE HOP MKE PLANNED  
EXPANSION MAP



The Boerke Company, Inc. / Independently Owned and Operated / A Member of the Cushman & Wakefield Alliance  
Cushman & Wakefield Copyright 2020. No warranty or representation, express or implied, is made to the accuracy or completeness of the information contained herein, and same is submitted subject to errors, omissions, change of price, rental or other conditions, withdrawal without notice, and to any special listing conditions imposed by the property owner(s). As applicable, we make no representation as to the condition of the property (or properties) in question.



## LOCATION MAP





# STATE OF WISCONSIN BROKER DISCLOSURE To Non-Residential Customers

## Wisconsin Law requires all real estate licensees to give the following information about brokerage services to prospective customer

Prior to negotiating on your behalf the Broker must provide you the following disclosure statement:

### BROKER DISCLOSURE TO CUSTOMERS

You are the customer of the broker. The broker is either an agent of another party in the transaction or a subagent of another broker who is the agent of another party in the transaction. The broker, or a salesperson acting on the behalf of the broker, may provide brokerage services to you. Whenever the broker is providing brokerage services to you, the broker owes you, the customer, the following duties:

- *The duty to provide brokerage services to you fairly and honestly.*
- *The duty to exercise reasonable skill and care in providing brokerage services to you.*
- *The duty to provide you with accurate information about market conditions within a reasonable time if you request it, unless disclosure of the information is prohibited by law.*
- *The duty to disclose to you in writing certain material adverse facts about a property, unless disclosure of the information is prohibited by law (see "Definition of Material Adverse Facts" below).*
- *The duty to protect your confidentiality. Unless the law requires it, the broker will not disclose your confidential information of other parties.*
- *The duty to safeguard trust funds and other property the broker holds.*
- *The duty, when negotiating, to present contract proposals in an objective and unbiased manner and disclose the advantages and disadvantages of the proposals.*

Please review this information carefully. A broker or salesperson can answer your questions about brokerage services, but if you need legal advice, tax advice, or a professional home inspection, contact an attorney, tax advisor, or home inspector.

This disclosure is required by section 452.135 of the Wisconsin Statutes and is for information only. It is a plain language summary of a broker's duties to a customer under section 452.133 (1) of the Wisconsin Statutes.

### CONFIDENTIALITY NOTICE TO CUSTOMERS

Broker will keep confidential any information given to broker in confidence, or any information obtained by broker that he or she knows a reasonable person would want to be kept confidential by law, or you authorize the broker to disclose particular information. A broker shall continue to keep the information confidential after broker is no longer providing brokerage services to you.

*No representation is made as to the legal validity of any provision or the adequacy of any provision on any specific transaction.*

The following information is required to be disclosed by law.

1. Material adverse facts, as defined in section 452.01 (5g) of the Wisconsin statutes (see "definition of material adverse facts" below).
2. Any facts known by the broker that contradict any information included in a written inspection report on the property or real estate that is the subject of the transaction. To ensure that the broker is aware of what specific information below. At a later time, you may also provide the broker with other information that you consider to be confidential.

### CONFIDENTIAL INFORMATION:

---

NON-CONFIDENTIAL INFORMATION (The following information may be disclosed by Broker):

---

*(INSERT INFORMATION YOU AUTHORIZE THE BROKER TO DISCLOSE SUCH AS FINANCIAL QUALIFICATION INFORMATION)*

### CONSENT TO TELEPHONE SOLICITATION

I/We agree that the Broker and any affiliated settlement service providers (for example, a mortgage company or title company) may call our/my home or cell phone numbers regarding issues, goods and services related to the real estate transaction until I/we withdraw this consent in writing. List Home/Cell Numbers:

### SEX OFFENDER REGISTRY

*Notice: You may obtain information about the sex offender registry and persons registered with the registry by contacting the Wisconsin Department of Corrections on the internet at [http:// offender.doc.state.wi.us/public/](http://offender.doc.state.wi.us/public/) or by phone at 608-240-5830.*

### DEFINITION OF MATERIAL ADVERSE FACTS

A "material adverse fact" is defined in Wis. Stat. 452.01 (5g) as an adverse fact that a party indicates is of such significance, or that is generally recognized by a competent licensee as being of such significance to a reasonable party that it affects or would affect the party's decision to enter into a contract or agreement concerning a transaction or affects or would affect the party's decision about the terms of such a contract or agreement. An "adverse fact" is defined in Wis. Stat. 452.01 (1e) as a condition or occurrence that a competent licensee generally recognizes will significantly adversely affect the value of the property, significantly reduce the structural integrity of improvements to real estate, or present a significant health risk to occupants of the property, or information that indicates that a party to a transaction is not able to or does not intend to meet his or her obligations under a contract or agreement made concerning the transaction.



Jim Cavanaugh  
Principal  
414.253.3950  
jcavanaugh@boerke.com

Andrew Jensen Jr., SIOR  
Principal  
414.203.3011  
ajensen@boerke.com

Katie Brueske  
Real Estate Advisor  
414.310.5723  
kbrueske@boerke.com

731 N Jackson Street  
Suite 700  
Milwaukee, WI 53202  
414.347.1000  
Boerke.com



CUSHMAN &  
WAKEFIELD

BOERKE