

262 Central Ave

262 Central Ave, Pawtucket, RI 02860



Listing ID: 30628520
 Status: Active
 Property Type: Retail-Commercial For Sale
 Retail-Commercial Type: Car Wash, Convenience Store
 Size: 1,518 SF
 Sale Price: \$309,000
 Unit Price: \$203.56 PSF
 Sale Terms: Cash to Seller



Overview/Comments

Busy Location with a over 1500 sf highly traffic count retail space, with a current use of auto repair and auto sales. Building has 3 car garages and office area , with 2 curb cuts and parking for approximately 20 cars.

More Information Online

<https://www.eastcoastcpn.com//listing/30628520>



QR Code

Scan this image with your mobile device:

General Information

Tax ID/APN:	PA 200437	Property Use Type:	Investment, Vacant/Owner-User
Retail-Commercial Type:	Car Wash, Convenience Store, Free-Standing Building, Street Retail, Vehicle Related, Other	Building/Unit Size (RSF):	1,518 SF
Zoning:	RM	Land Area:	5,234 SF
		Sale Terms:	Cash to Seller

Area & Location

Retail Clientele:	General, Business	Largest Nearby Street:	Central Ave
Property Located Between:	Cottage, Central and Sabin	Feet of Frontage:	140
Property Visibility:	Excellent	Highway Access:	One Minute to I-95

Building Related

Number of Stories:	1	Parking Type:	Surface
Typical SF / Floor:	1,518 SF	Passenger Elevators:	0
Property Condition:	Fair	Freight Elevators:	0
Year Built:	1930		

Location

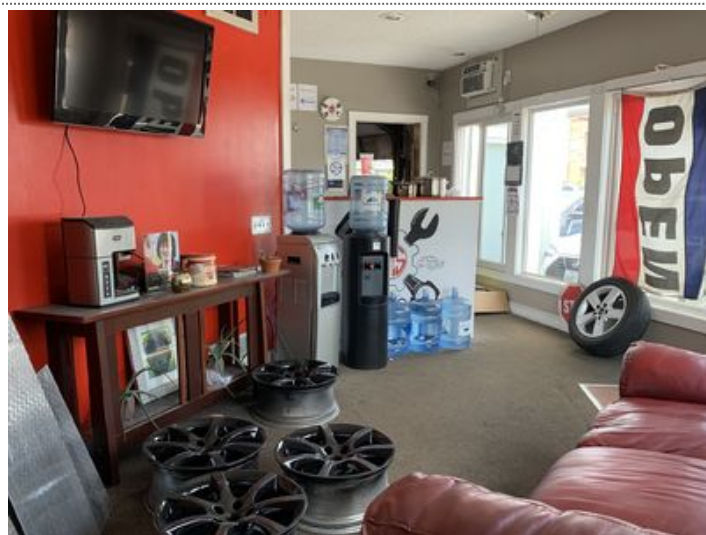
Address:	262 Central Ave, Pawtucket, RI 02860
County:	Providence
MSA:	Providence-Warwick



Property Images



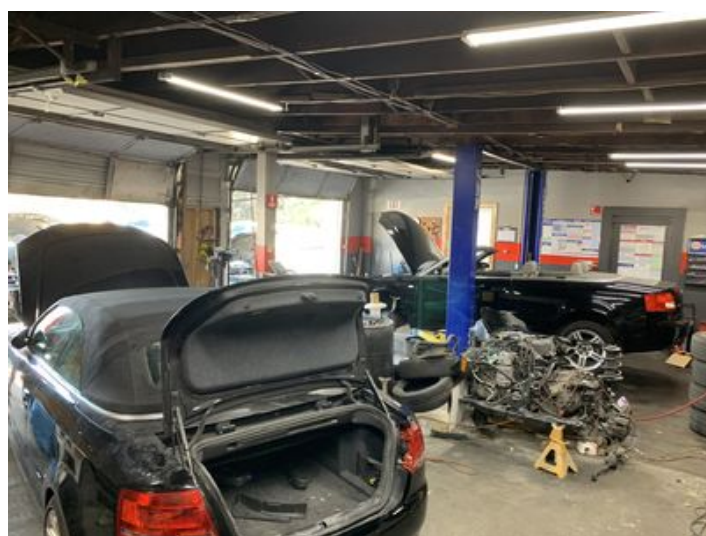
IMG_5099



IMG_5031



image



IMG_5080

Property Contacts



Michael A Alves

Keller Williams Realty Leading

401-523-9555 [M]

401-523-9555 [O]

imcommercial@yahoo.com