



SUBLEASE OPPORTUNITY

5950 S WILLOW DRIVE, SUITE 308

GREENWOOD VILLAGE , CO 80111

Aaron Chase

Vice President

O: 720.370.2835

aaron.chase@svn.com

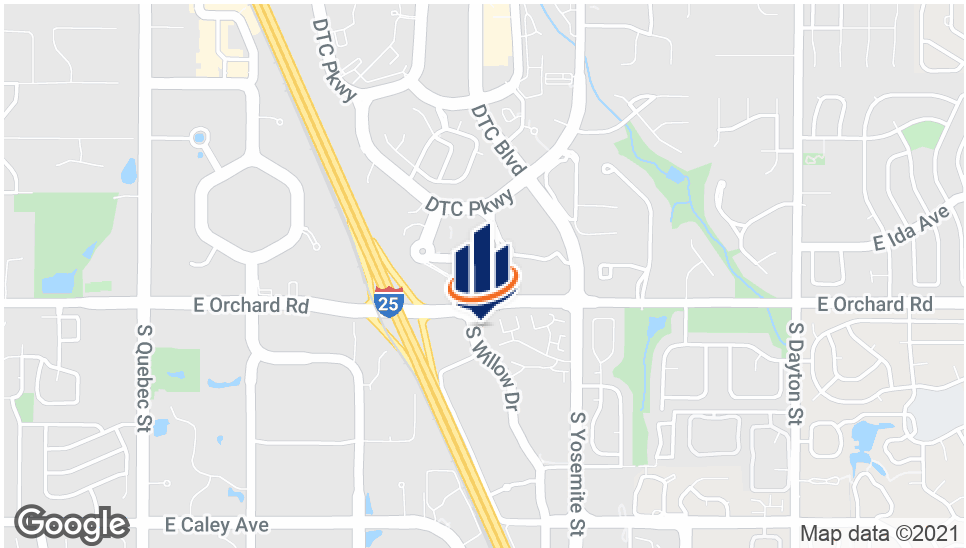
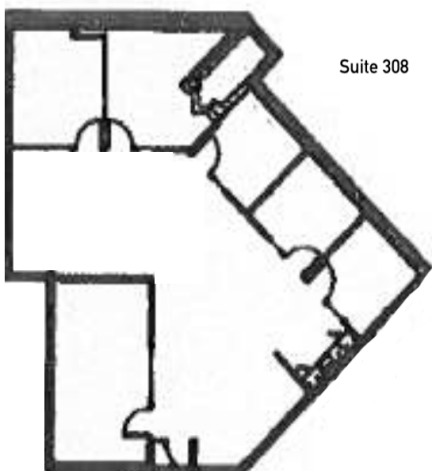
Brian McCrie

Managing Director

O: 720.893.2834

brian.mccrie@svn.com

Property Summary



OFFERING SUMMARY

Sublease Rate:	\$21.00 SF/yr (Full Service)
Building Size:	47,050 SF
Available SF:	2,173 SF
Sublease Expiration:	February 28th, 2022
Term:	Negotiable

PROPERTY OVERVIEW

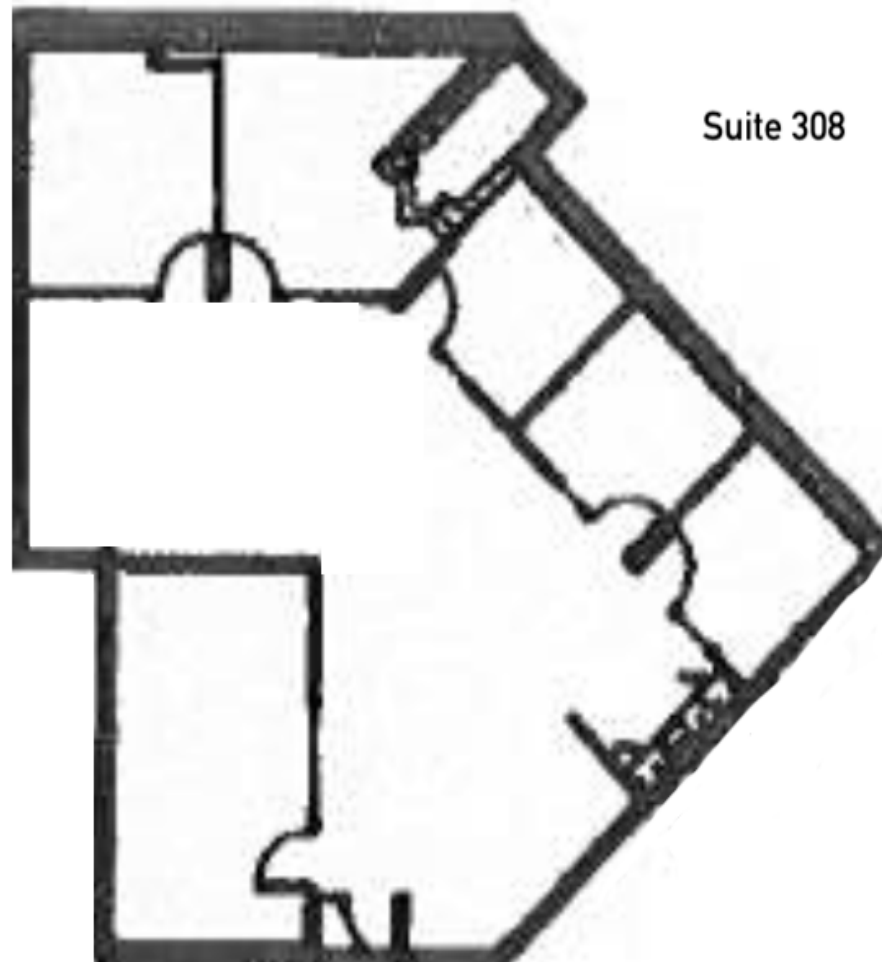
- Class B Office building located of E Orchard Rd & I-25
- Building common conference room available
- Plenty of parking and easy access to retail
- 5 exterior office, kitchenette, IT closet & open area for employee's
- Exceptional mountain views and great sunlight

5950 S WILLOW DRIVE, SUITE 308 GREENWOOD VILLAGE , CO 80111

SVN | Denver Commercial | Page 2

The information presented here is deemed to be accurate, but it has not been independently verified. We make no guarantee, warranty or representation. It is your responsibility to independently confirm accuracy and completeness. All SVN® offices are independently owned and operated.

Floor Plan



Location Maps

