



AVAILABLE

2774-2788 NW THURMAN

PORTLAND, OR 97210

Cliff Hockley CPM, CCIM
Executive Director
O: 503.222.3800
cliff.hockley@svn.com

Jim Wierson II
Senior Advisor
O: 503.459.4376
jim.wierson@svn.com

Olesya Prokhorova
Advisor
O: 503.459.4347
olesya.prokhorova@svn.com



Property Summary



OFFERING SUMMARY

Annual Base Rate:	Negotiable
Building Size:	7,212 SF
Available SF:	3,785 SF
Lot Size:	10,000 SF
Year Built:	1914
Zoning:	CM2

PROPERTY OVERVIEW

Suite 2788 is currently available for lease. Please call for pricing. Restaurant / Pub build-out located at the corner of NW Thurman St and NW 28th Street. The property features a 2,788 SF open-air patio. Numerous amenities available in close proximity.

It is zoned CM2 which provides flexible allowable uses such as retail sales and services, office space, household living, vehicle repair, institutional uses, and limited manufacturing. The zoning permits a 45' maximum height, which is generally four stories, increasing to 55' (5 stories) with bonus provisions in some areas.

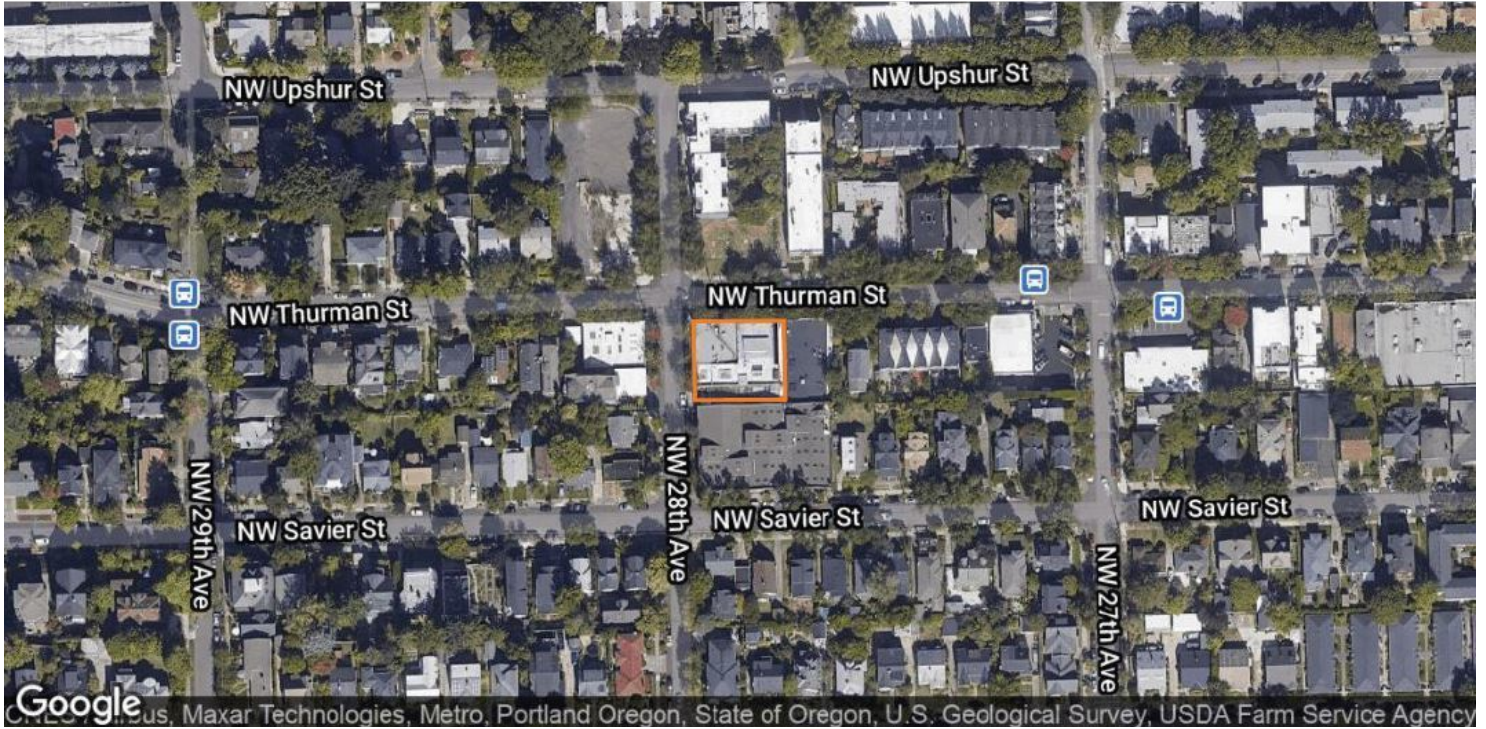
PROPERTY HIGHLIGHTS

- Fenced Yard for parking, loading and extra storage
- Flexible Use
- Commercial Mixed Used 2 Zoning [CM2]
- Walk Score : 92
- Median Household Income within 1 mile radius : \$93,270

Additional Photos



Location Maps



2774-2788 NW THURMAN, PORTLAND, OR 97210

SVN | Bluestone & Hockley | Page 4

The information presented here is deemed to be accurate, but it has not been independently verified. We make no guarantee, warranty or representation. It is your responsibility to independently confirm accuracy and completeness. All SVN® offices are independently owned and operated.

Location Map: Proximity To ESCO Development

