

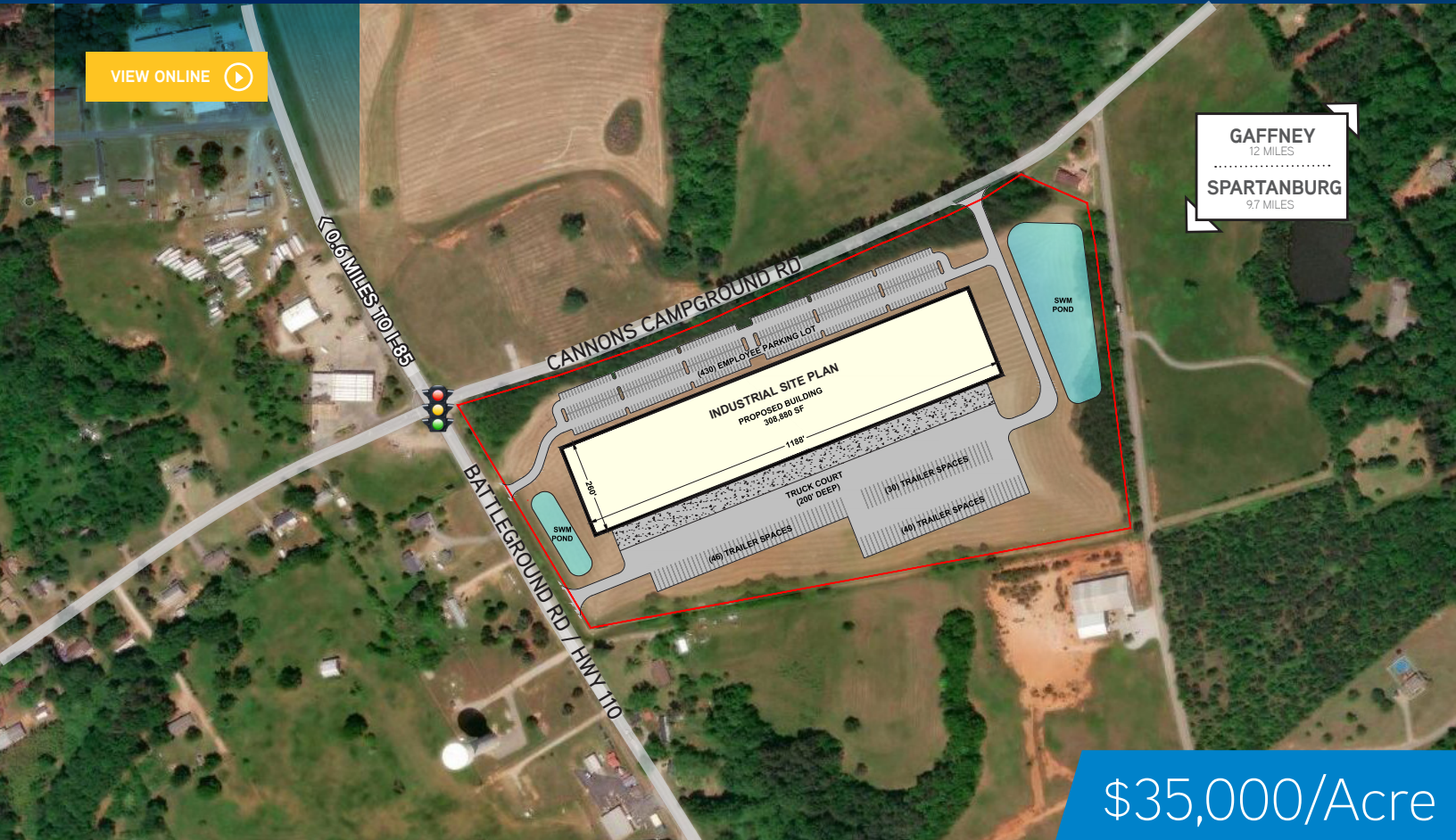
For Sale

Cannons Campground/Hwy 110 | Spartanburg County | SC

Colliers
INTERNATIONAL

VIEW ONLINE 

GAFFNEY
12 MILES
.....
SPARTANBURG
9.7 MILES



\$35,000/Acre

±32-Acre Industrial or Residential Site in Spartanburg County

- Frontage/visibility on Hwy 110 and Cannons Campground Rd
- Signalized intersection
- Cleared with good topography
- Nearby businesses include Dollar Tree DC, BeriCap, Timken, Nestle, Freightliner
- All utilities available
- Ideal for industrial development/distribution center or residential
- ±0.6 miles to I-85 / 16 miles to I-26
- ±11 miles to downtown Spartanburg
- Multiple ingress/egress
- Close proximity to newly improved I-85 (Exit 83)

Contact:

Dillon Swayngim
Brokerage Associate
+1 864 527 5456
dillon.swayngim@colliers.com

D. Ralph Settle, II
Brokerage Associate
+1 864 527 5452
ralph.settle@colliers.com

Colliers International
145 W Main St | Suite 300
Spartanburg, SC 29306

This document has been prepared by Colliers International for advertising and general information only. Colliers International makes no guarantees, representations or warranties of any kind, expressed or implied, regarding the information including, but not limited to, warranties of content, accuracy and reliability. Any interested party should undertake their own inquiries as to the accuracy of the information. Colliers International excludes unequivocally all inferred or implied terms, conditions and warranties arising out of this document and excludes all liability for loss and damages arising there from. This publication is the copyrighted property of Colliers International and/or its licensor(s). ©2020. All rights reserved.

For Sale

Cannons Campground/Hwy 110 | Spartanburg County | SC



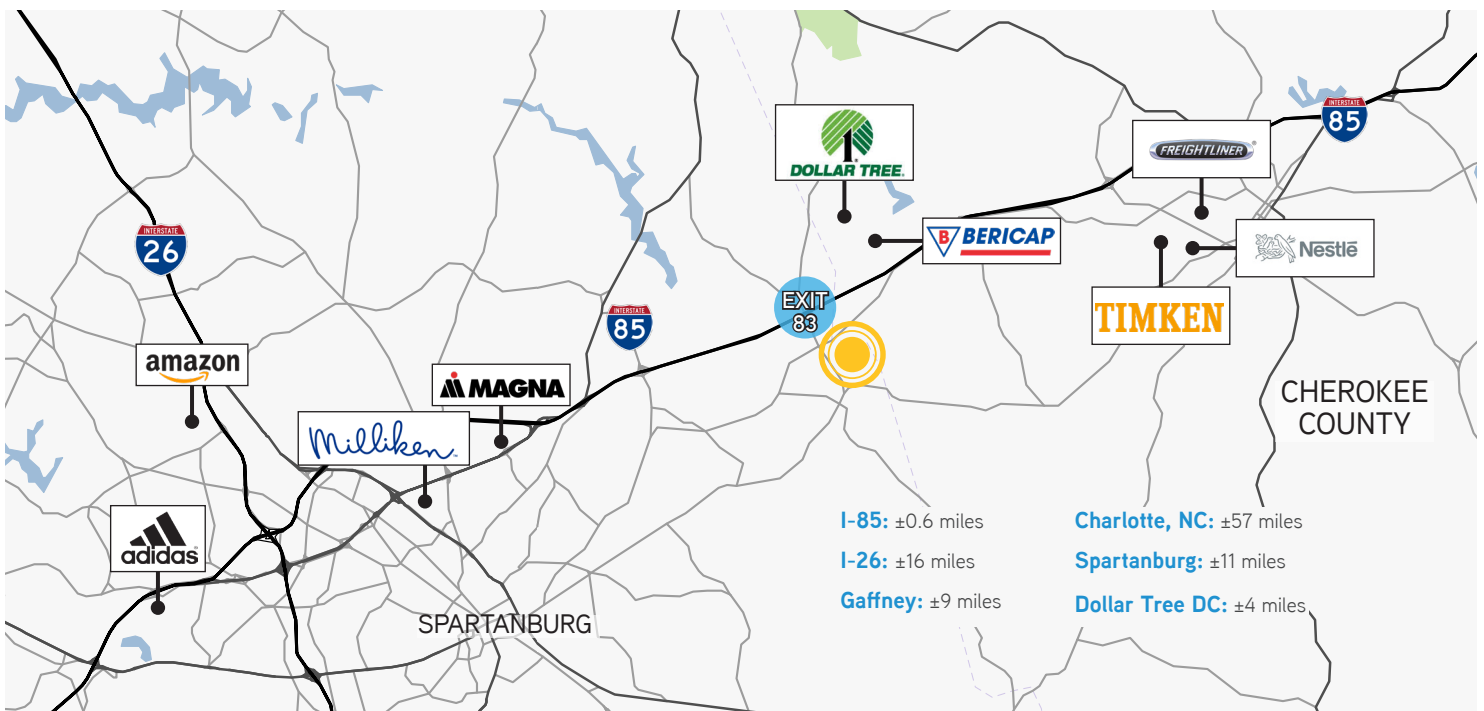
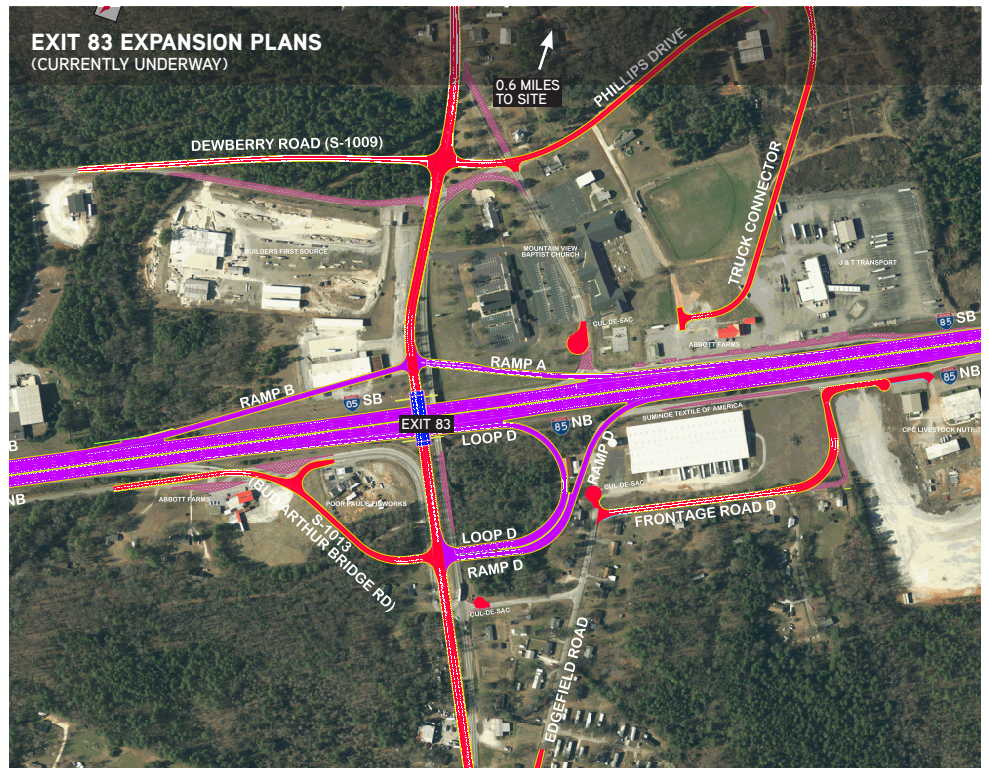
I-85 IMPROVEMENT PROJECT AT EXIT 83

Improvements to the I-85 interstate at Exit 83 are currently underway less than 1 mile from the Cannons Campground/Hwy 110 site, with an expected completion date in Q3 of 2021.

This project includes the widening and rehabilitation of the existing interstate infrastructure beginning at mile marker 77 and continues to the North Carolina state line.

When complete, the interstate will include an additional travel lane in both directions and interchange reconstruction for exits at mile markers 83, 87, 95, and 96. (SCDOT)

[VIEW PROPERTY ONLINE](#)



Contact: **Dillon Swayngim**
Brokerage Associate
+1 864 527 5456
dillon.swayngim@colliers.com

Contact: **D. Ralph Settle, II**
Brokerage Associate
+1 864 527 5452
ralph.settle@colliers.com