

FOR SALE > INDUSTRIAL SITE/RESIDENTIAL DEVELOPMENT



5200 Block of Edmund Hwy

WEST COLUMBIA, SOUTH CAROLINA 29170



Edmund Hwy > Industrial/Residential Development

This site sits on ± 78.68 acres and has $\pm 1,600$ feet of frontage on Edmund Hwy. Situated only 10 miles from all three major interstates (I-26, I-20, & I-77), this site makes for an easy commute in and out of the growing capital city of Columbia.

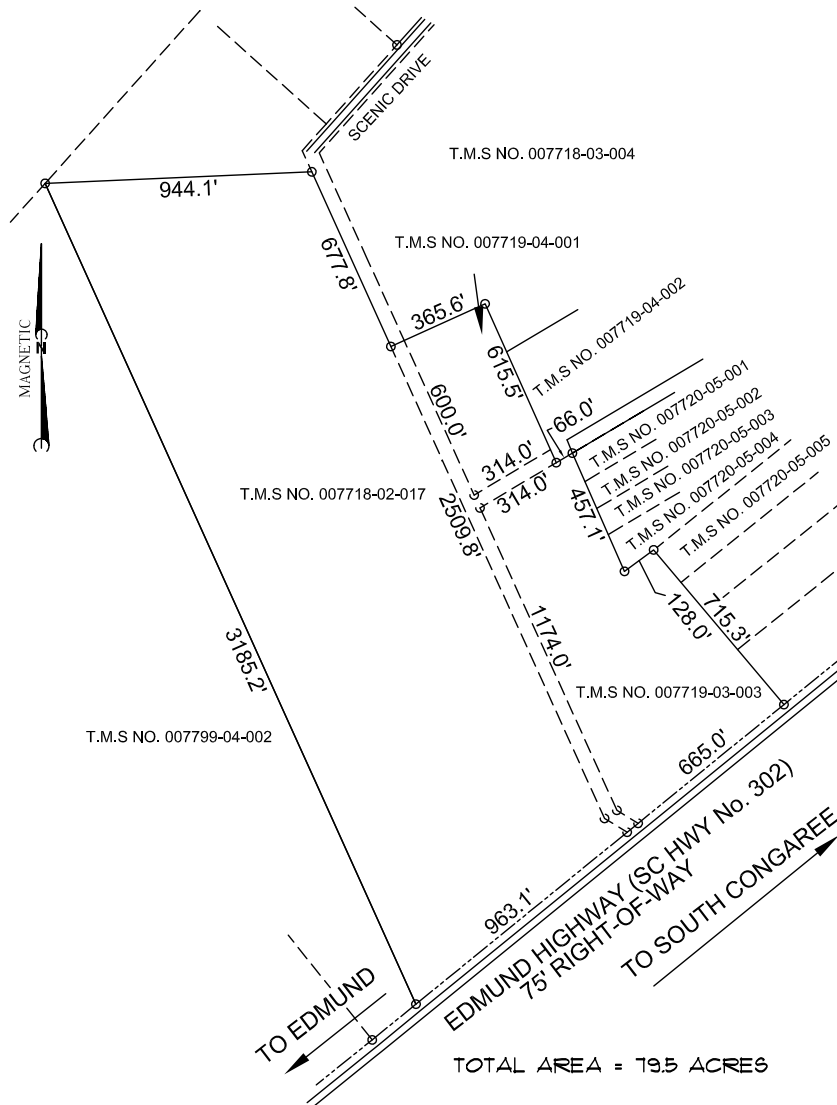
Property Features

- > ± 78.68 acres
- > $\pm 1,600$ feet of frontage on Edmund Highway
- > Lexington County zoning: ID (Intensive Development) and RD (Restrictive Development)
- > 6.6 miles from Columbia Metropolitan Airport
- > Under 10 miles from all three major interstates:
 - I-26 (7.1 miles)
 - I-20 (9.9 miles)
 - I-77 (8.8 miles)
- > **Sale price: \$944,000**
(\$12,000/acre)

MARSHALL HOEFER
803 401 4220
marshall.hoefer@colliers.com

COLLIERS INTERNATIONAL
1301 Gervais Street, Suite 600
Columbia, SC 29201
www.colliers.com/columbia

Edmund Hwy > Plat



SKETCH PLAN PREPARED FOR
CSS DEVELOPMENT, LLC

Steadman & Associates, Inc.

**SURVEYING
 PLANNING
 DESIGN**



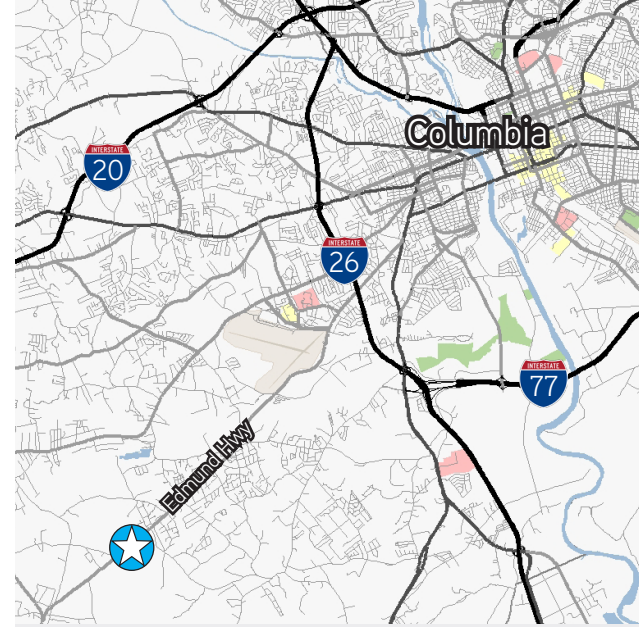
301 CARLISLE STREET - SUITE 103 COLUMBIA, SC 29205
 TEL. (803) 799-4500 E-MAIL: LAVERNE@STEADMAN SC.RR.COM

N.B. FILE
 TJP

Scale: 1" = 200' By: C. La Verne Steadman P.L.S. No. 1883 Date: NOVEMBER 11, 2017

Job No. 17-067B

Dwg. No. A-FILE



Contact Us

MARSHALL HOEFER
 803 401 4220
marshall.hoefer@colliers.com

COLLIERS INTERNATIONAL
 1301 Gervais Street, Suite 600
 Columbia, SC 29201

www.colliers.com/columbia

This document/email has been prepared by Colliers International for advertising and general information only. Colliers International makes no guarantees, representations or warranties of any kind, expressed or implied, regarding the information including, but not limited to, warranties of content, accuracy and reliability. Any interested party should undertake their own inquiries as to the accuracy of the information. Colliers International excludes unequivocally all inferred or implied terms, conditions and warranties arising out of this document and excludes all liability for loss and damages arising there from. This publication is the copyrighted property of Colliers International and /or its licensor(s). © 2016. All rights reserved. This communication is not intended to cause or induce breach of an existing listing agreement. Colliers International.

