

VIEW ONLINE 

CVS



WAFFLE  
HOUSE



# Former Fast Food Restaurant for Sale Across from Wofford College

## 98 Garner Road, Spartanburg | SC

The subject property is an approximately 3,200-square-foot free-standing former Hardee's with a drive-thru located at the signalized intersection of Garner Road and North Pine Street. The site features outstanding visibility and is located across from Wofford College and near Spartanburg Regional Medical Center.

### FEATURES

- ±3,200-square-foot building in excellent condition with drive-thru
- ±1.62-acre parcel
- Great location across from Wofford College
- Visible building signage from North Pine Street
- Frontage: 153'
- Parking: 74 surface spaces
- Zoning: B-3 (General Business District)
- Tax map #: 7-08-14-092.01
- Traffic count (2019): North Pine Street 34,400 VPD
- Built in 1974

Sale price:

# \$750,000

### Contact us:

Tripp Bradley, CCIM

Vice President

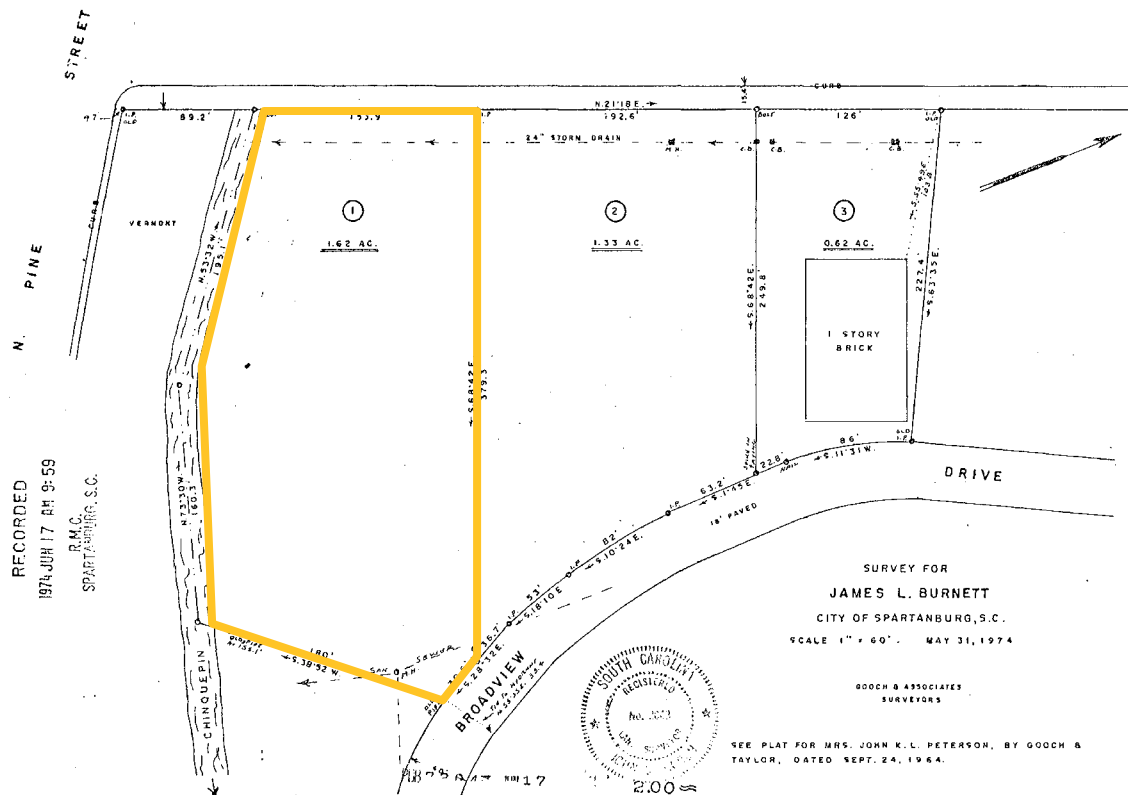
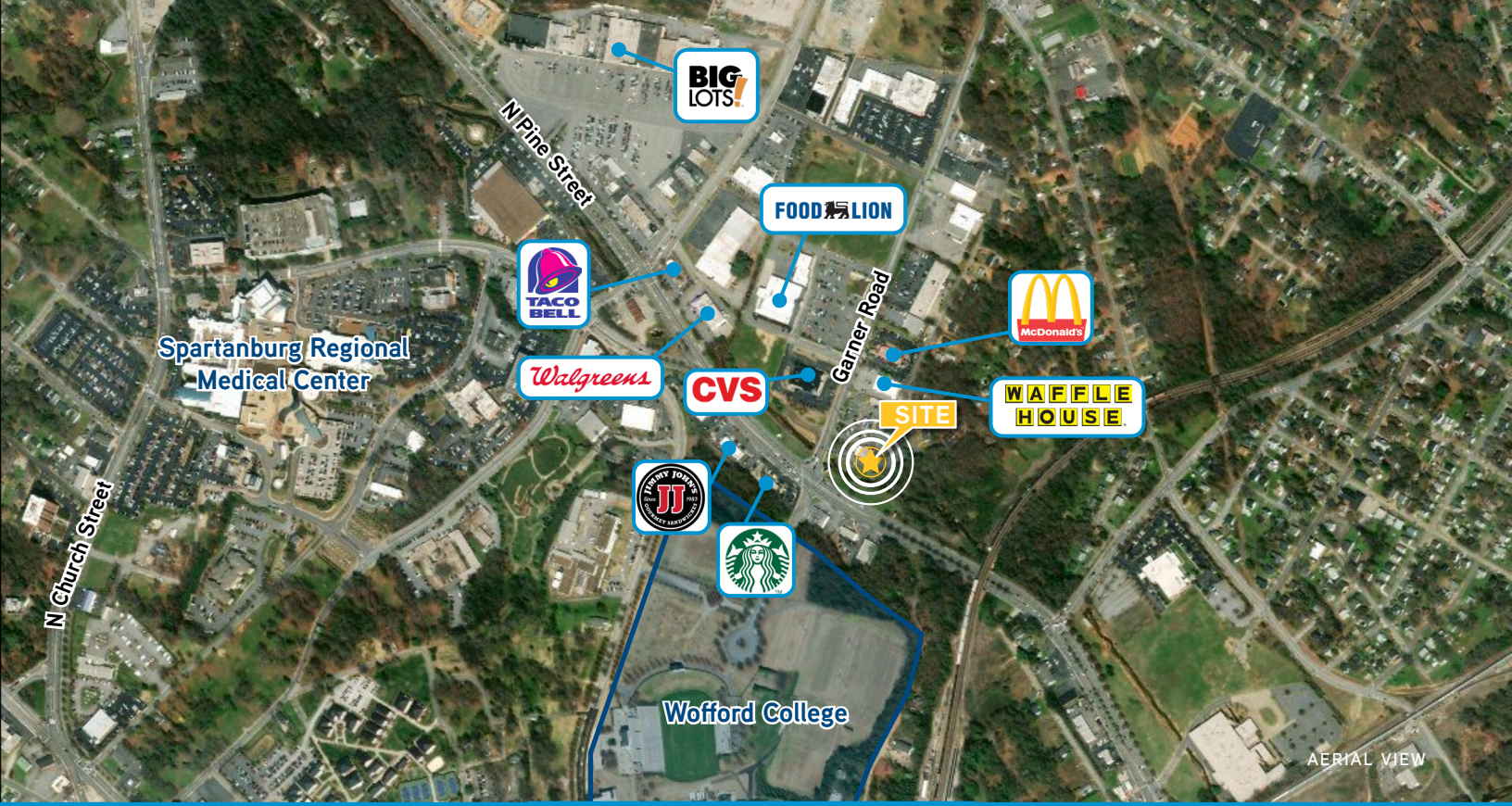
+1 803 401 4257

[tripp.bradley@colliers.com](mailto:tripp.bradley@colliers.com)



Colliers International  
1301 Gervais Street | Suite 600  
Columbia, SC 29201  
P: +1 803 254 2300  
[www.colliers.com](http://www.colliers.com)

This document has been prepared by Colliers International for advertising and general information only. Colliers International makes no guarantees, representations or warranties of any kind, expressed or implied, regarding the information including, but not limited to, warranties of content, accuracy and reliability. Any interested party should undertake their own inquiries as to the accuracy of the information. Colliers International excludes unequivocally all inferred or implied terms, conditions and warranties arising out of this document and excludes all liability for loss and damages arising there from. This publication is the copyrighted property of Colliers International and/or its licensor(s). ©2020. All rights reserved.



PLAT

Tripp Bradley, CCIM  
 Vice President  
 +1 803 401 4257  
 tripp.bradley@colliers.com



Accelerating success.