



23859 KZ Parkway | Greenwood, NE 68366

\$7.00 - 8.00 PSF

### Property Features

- Conveniently located between Lincoln and Omaha minutes off of I-80 Greenwood Exit
- Excellent visibility from Highway 63
- 14-foot tall overhead doors in each bay with clear span
- First-generation space built in 2019

12915 West Dodge Road  
Omaha, NE 68154  
402 255 6060  
[nainpdodge.com](http://nainpdodge.com)

**Maddie Graeve**  
Associate  
402 255 6527  
[mgraeve@npdodge.com](mailto:mgraeve@npdodge.com)



### Building Details

Building Size	19,800 SF
Tenancy	Multiple
No. Grade Level Doors	12
No. Drive-in Bays	12
Ceiling Height	20-22 ft
Minimum Ceiling Height	20 ft
No. of Floors	1
Year Built	2019
Power Description	Single phase power

### Property Details

Zoning	Commercial
Parking Spaces	30

### Location Details

Market	Greenwood
County	Cass
Nearest Interstate	I-80

### Demographics

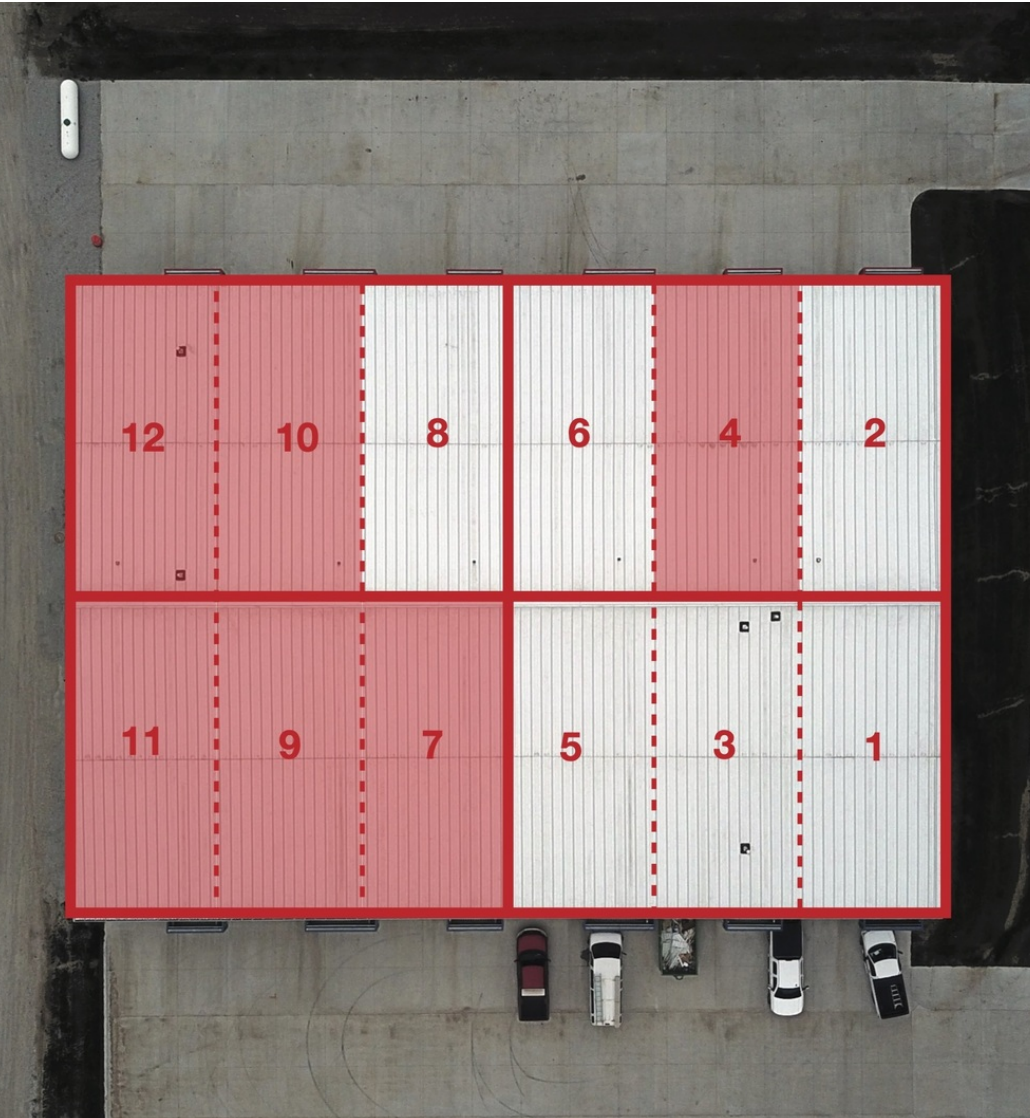
Demographics	1 Mile	10 Miles	30 Miles
Total Households	24	4,265	317,970
Total Population	63	10,925	813,589
Average HH Income	\$88,348	\$76,092	\$78,323

### Available Spaces

Space	Lease Rate	Lease Type	Size (SF)
Suite 4	\$7.00 SF/yr	NNN	1,500 SF
Suite 7	\$8.00 SF/yr	NNN	1,500 - 4,800 SF
Suite 9	\$8.00 SF/yr	NNN	1,800 - 4,800 SF
Suite 10	\$7.00 SF/yr	NNN	1,800 - 3,300 SF
Suite 11	\$8.00 SF/yr	NNN	1,500 - 4,800 SF
Suite 12	\$7.00 SF/yr	NNN	1,500 - 3,300 SF

23859 KZ Parkway





## AVAILABLE SUITES

	AVAILABLE SF	RENTAL RATE	DRIVE-IN DOOR
Suite 4	1,500 SF	\$7.00 (NNN)	12X14
Suite 7	1,500-4,800 SF	\$8.00 (NNN)	12X14
Suite 9	1,800-4,800 SF	\$8.00 (NNN)	14X14
Suite 10	1,800-3,300 SF	\$7.00 (NNN)	14X14
Suite 11	1,500-4,800 SF	\$8.00 (NNN)	12X14
Suite 12	1,500-3,300 SF	\$7.00 (NNN)	12X14

23859 KZ Parkway

