



Great Visibility from 84th Street

4223 S 84th Street | Omaha, NE 68127

\$10.00 PSF (NNN)

Property Features

- Two blocks south of 84th & I-80
- Parking ratio: 3.30/1,000 SF
- High traffic counts: 40,280 vehicles per day
- Minimum 3 year lease

12915 West Dodge Road
Omaha, NE 68154
402 255 6060
nainpdodge.com

Ed Petsche Associate 402 255 6072 epetsche@npdodge.com	Maddie Graeve Associate 402 255 6527 mgraeve@npdodge.com
--	---

For Lease

Retail Property

1,113 SF Available



Building Details

Tenancy	Multiple
Number of Floors	One
Year Built	1977
Gross Leaseable Area	12,146
Construction Status	Existing

Property Details

Lot Size	1.12 Acres
Zoning	Commercial
Parking Spaces	40 Surface
Parking Ratio	3.30/1,000

Location Details

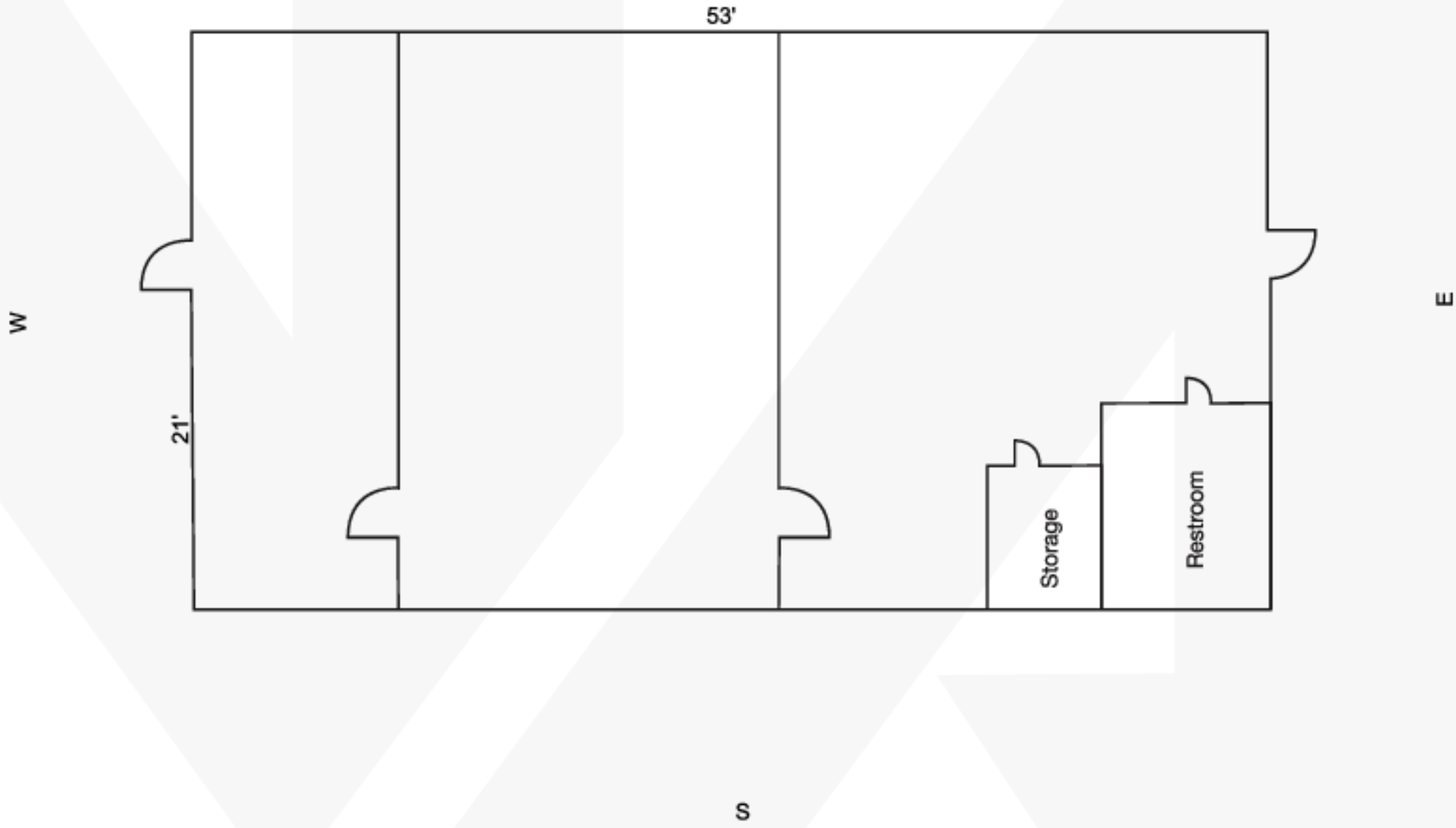
Market	Omaha/Council Bluffs
Submarket	South Central
County	Douglas
Cross Streets	84th & H Street

Demographics

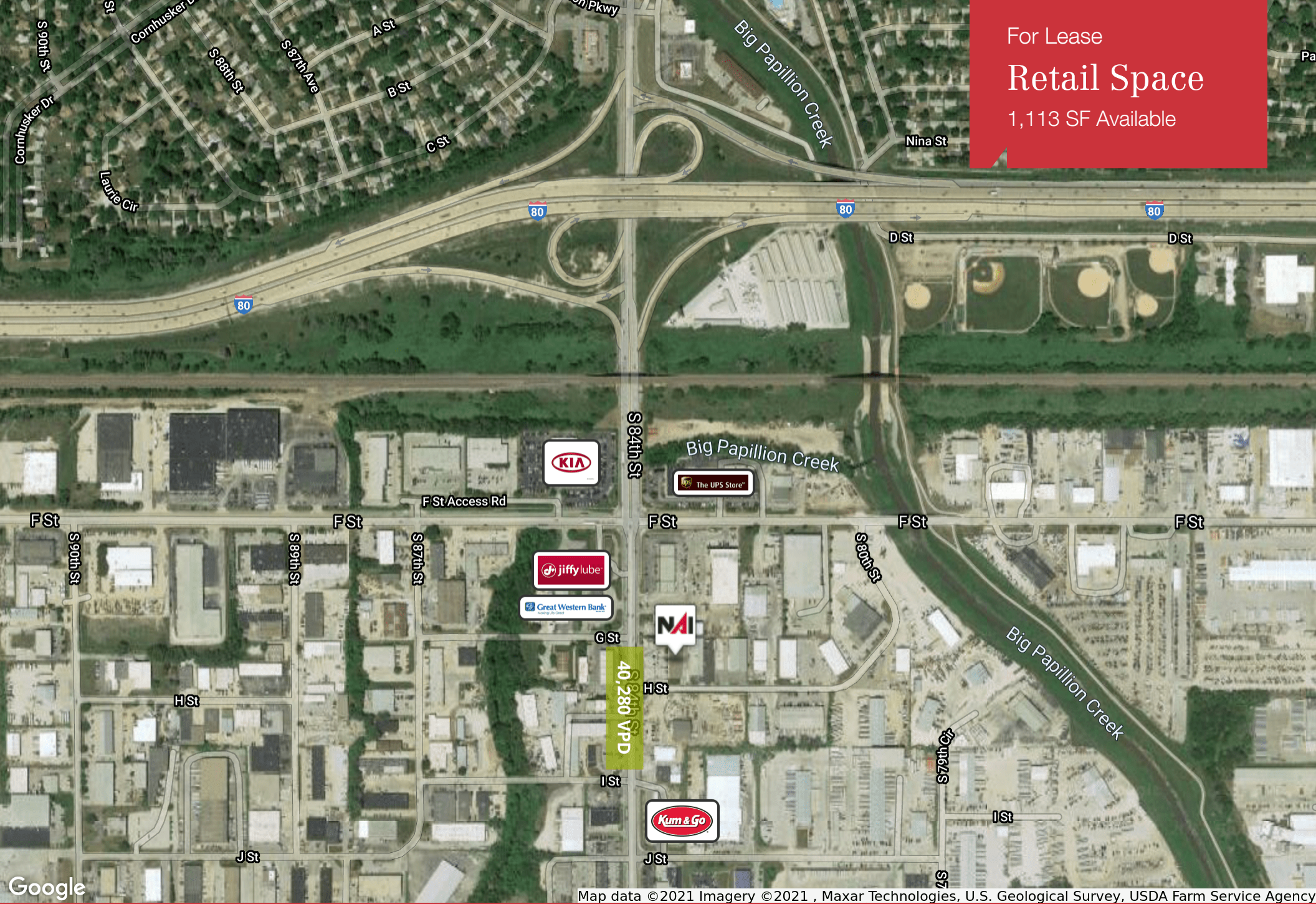
Demographics	1 Mile	5 Miles	10 Miles
Total Households	3,482	98,757	295,907
Total Population	7,573	233,925	751,554
Average HH Income	\$55,687	\$69,956	\$67,230

Available Spaces

Space	Lease Rate	Lease Type	Size (SF)	Term
4223 S 84th Street	\$10.00 SF/yr	NNN	1,113 SF	Negotiable



For Lease
Retail Space
1,113 SF Available



Google

Map data © 2021 Imagery © 2021, Maxar Technologies, U.S. Geological Survey, USDA Farm Service Agency



Ed Petsche
Associate
+1 402 255 6072
epetsche@npdodge.com

Maddie Graeve
Associate
+1 402 255 6527
mgraeve@npdodge.com

12915 West Dodge Road
Omaha, NE 68154
402 255 6060 tel
nainpdodge.com