



9720-9748 Park Drive | Omaha, NE 68127

Sale: \$660,300 | Lease: \$8.50 PSF (NNN)

Property Features

- First floor office building with parking at front door
- Ideal for general office user, counselor, daycare or massage therapist
- Existing buildout consists of private offices and restrooms
- 2019 estimated NNN's: \$4.50 PSF

12915 West Dodge Road
Omaha, NE 68154
402 255 6060
nainpdodge.com

Gabrielle Estivo

Associate

402 255 6085

gestivo@npdodge.com

Tracy Earnest

Senior Vice President

402 255 6096

tearnest@npdodge.com



Building Details

Building Size	9,984 SF
Tenancy	Multiple
Building Class	B
Number of Floors	1
Year Built	1994
Construction Status	Complete
Construction Type	Masonry
Sprinkler	No
Restrooms	Two
HVAC	Gas forced

Property Details

Lot Size	1.22 Acres
Zoning	CC
Parking Spaces	60 Surface Spaces
Parking Ratio	6.01/1,000 SF

Location Details

Market	Omaha/Council Bluffs
Submarket	South Central
County	Douglas
Cross Streets	96th & Park Drive
Park / Complex Name	Applewood Center

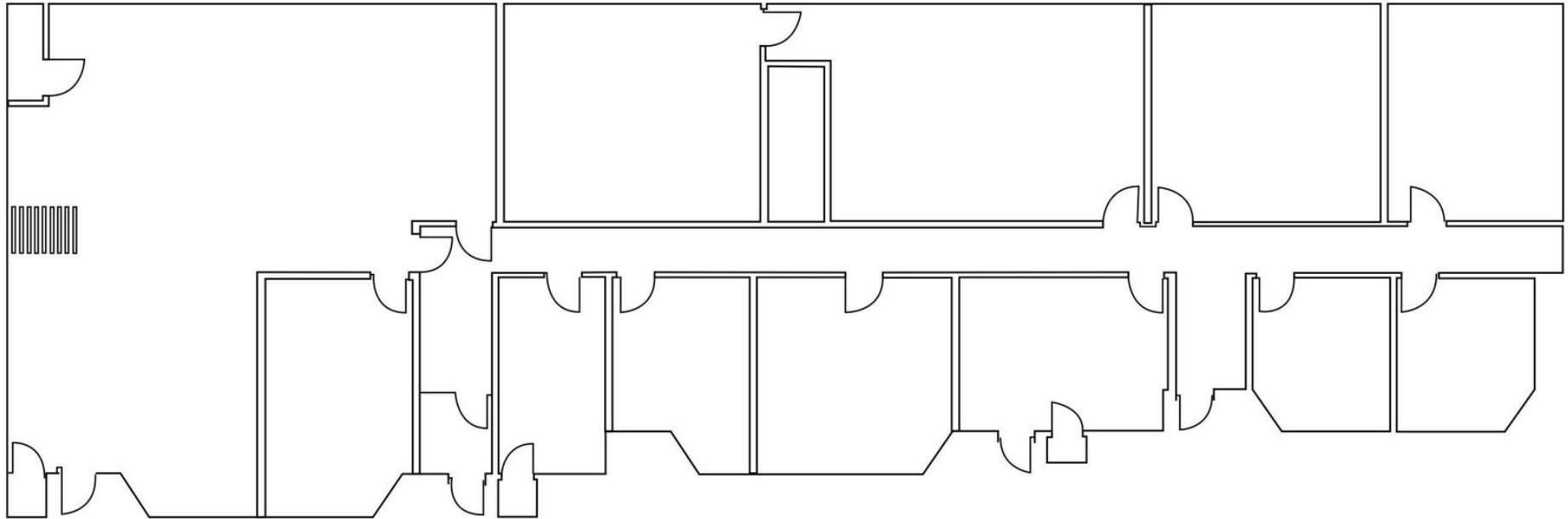
Demographics

Demographics	1 Mile	3 Miles	5 Miles
Total Households	7,291	35,319	94,078
Total Population	15,488	84,968	230,192
Average HH Income	\$54,397	\$66,543	\$67,699

Available Spaces

Space	Lease Rate	Lease Type	Size (SF)	Term
9720-9748 Park Drive	\$8.50 SF/yr	NNN	5,742 SF	Negotiable

9720 -9748 Park Drive
5,742 SF Available



Applewood Center



Google

Map data © 2020 Imagery © 2020 , Maxar Technologies, U.S. Geological Survey, USDA Farm Service Agency



Gabrielle Estivo

Associate

+1 402 255 6085

gestivo@npdodge.com

Tracy Earnest

Senior Vice President

+1 402 255 6096

tearrest@npdodge.com

12915 West Dodge Road

Omaha, NE 68154

402 255 6060 tel

nainpdodge.com