



Grant - Murray

REAL ESTATE, LLC

COMMERCIAL AND INVESTMENT BROKERAGE

150 N. McPherson Church Rd
Fayetteville, NC 28303

www.grantmurrayre.com



INDUSTRIAL PROPERTY FOR LEASE

INDUSTRIAL - FLEX SPACE OFF BUSY RAEFORD RD
1018 Arran Circle , Fayetteville, NC 28304

for more information

SUSAN EVANS

Broker

O: 910.829.1617 x208

C: 919.920.2140

susan@grantmurrayre.com



EXECUTIVE SUMMARY



OFFERING SUMMARY

Available SF: 3,700 SF

Lease Rate: \$2,600.00 per month (MG)

Lot Size: 3.06 Acres

Building Size: 16,804

Zoning: SF-6/Commercial

PROPERTY OVERVIEW

This property is located off busy Raeford Rd. Great site for several construction or warehouse uses. The property consists of a warehouse and office space. The warehouse space is approximately 2,700 SF and the office building is approximately 1,035 SF. The site is fenced and gated and has a large laydown yard. Well water is on site.

AVAILABLE SPACES

SPACE	LEASE RATE	SIZE (SF)
1018 Arran Circle	\$2,600 per month	3,700 SF

for more information

SUSAN EVANS
Broker
O: 910.829.1617 x208
C: 919.920.2140
susan@grantmurrayre.com



ADDITIONAL PHOTOS



for more information

SUSAN EVANS
 Broker
 O: 910.829.1617 x208
 C: 919.920.2140
 susan@grantmurrayre.com



LOCATION MAPS

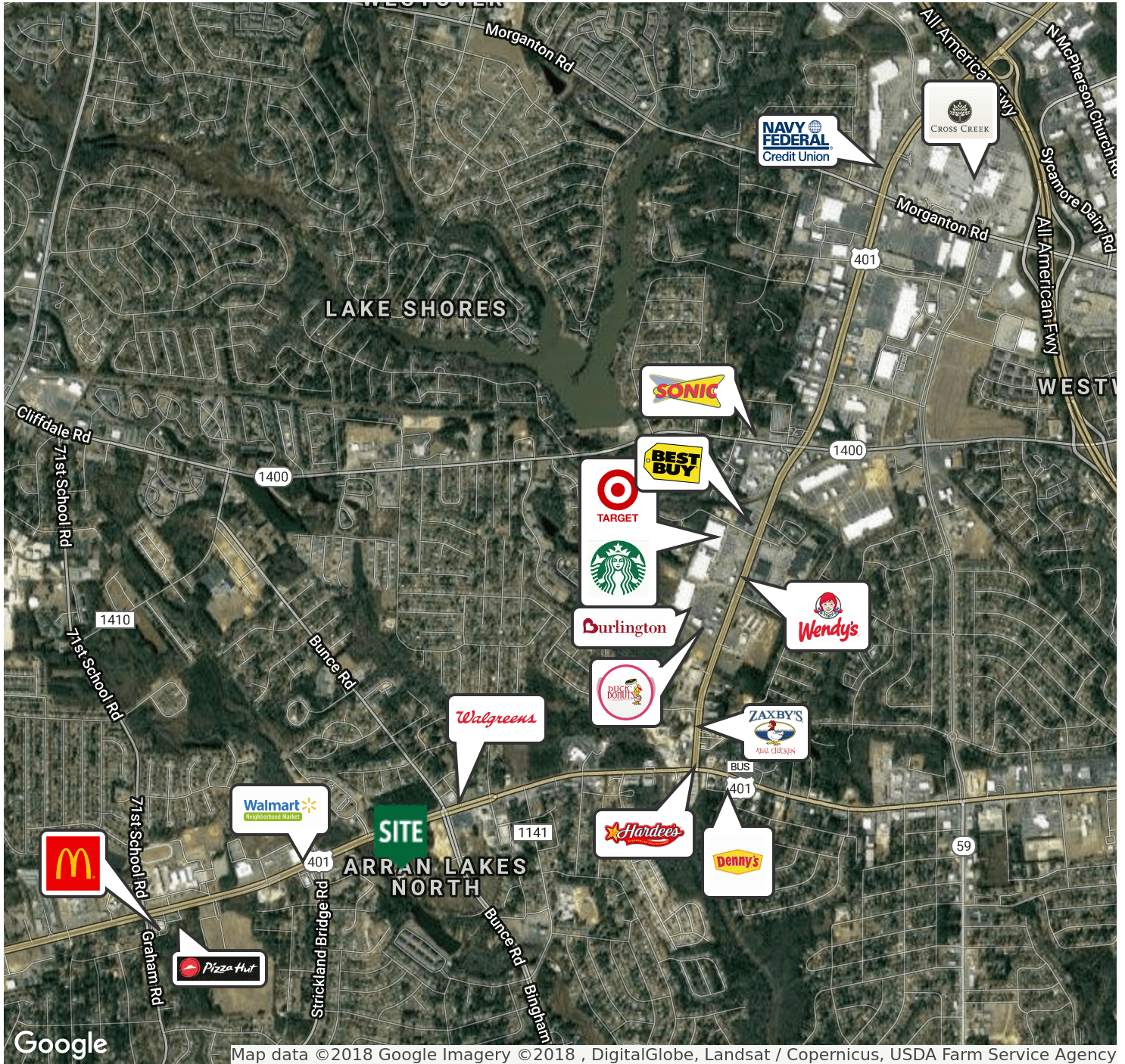


for more information

SUSAN EVANS
 Broker
 O: 910.829.1617 x208
 C: 919.920.2140
susan@grantmurrayre.com



RETAILER MAP



for more information

SUSAN EVANS
 Broker
 O: 910.829.1617 x208
 C: 919.920.2140
susan@grantmurrayre.com