



## Whitehall Sublease Opportunity

### Offering Summary

Existing Rental Rate:	Negotiable
Building Size:	31,697 SF
Available SF:	3,226 SF
Year Built:	1981
Sublease Expiration:	03/23/2023

### Get more information

**James Kelly**

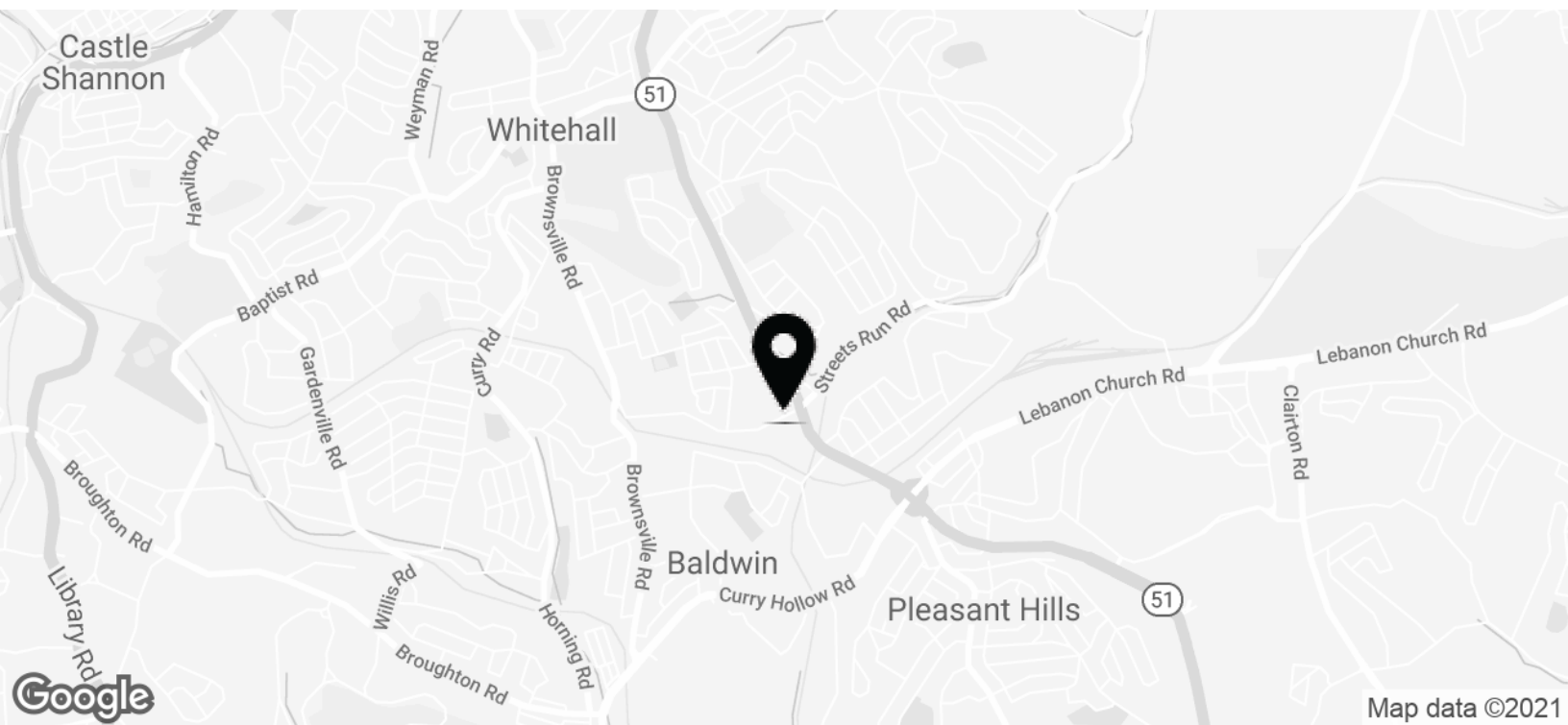
Principal & SVP  
D 412 720 4012  
james.kelly@avisonyoung.com

**Justin Weaver**

Associate  
D 412 944 2126  
justin.weaver@avisonyoung.com

**Greg Benckart**

Associate  
D 412 944 2137  
greg.benckart@avisonyoung.com



### Property Highlights:

- 3,226 SF Available on the 2nd Floor
- Sublet available immediately
- Existing term through 03/14/2023
- Two large conference/training rooms
- Two kitchens and one ADA restroom
- Great for a medical user

### Location Overview:

- Closely located by 51 directly behind the Eat N Park

**AVISON  
YOUNG**

**James Kelly**

Principal & SVP

D 412 720 4012

[james.kelly@avisonyoung.com](mailto:james.kelly@avisonyoung.com)

**Justin Weaver**

Associate

D 412 944 2126

[justin.weaver@avisonyoung.com](mailto:justin.weaver@avisonyoung.com)

**Greg Benckart**

Associate

D 412 944 2137

[greg.benckart@avisonyoung.com](mailto:greg.benckart@avisonyoung.com)

# Office Space for Sublease

470 Streets Run Road , Pittsburgh, PA 15236



**James Kelly**  
Principal & SVP  
D 412 720 4012  
james.kelly@avisonyoung.com

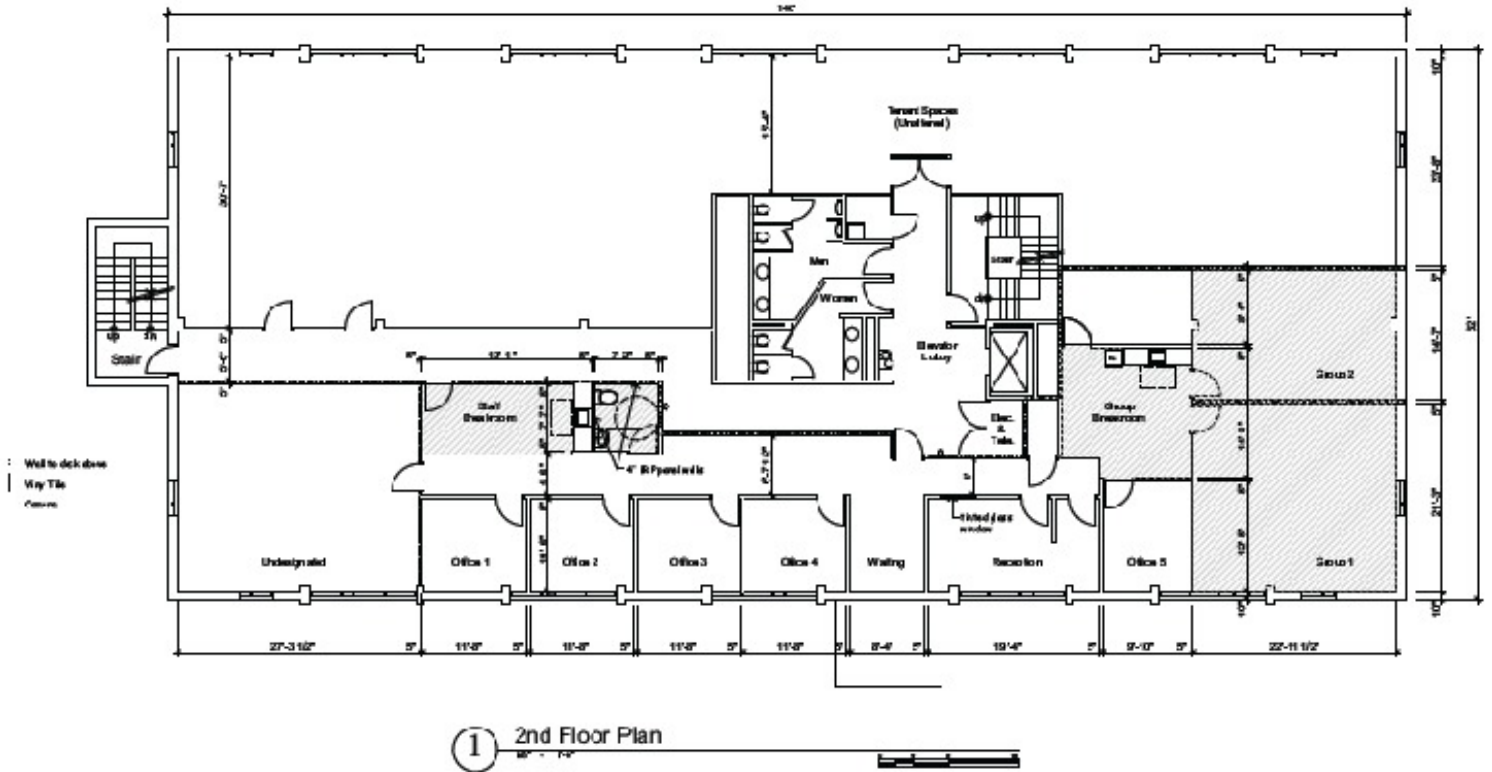
**Justin Weaver**  
Associate  
D 412 944 2126  
justin.weaver@avisonyoung.com

**Greg Benckart**  
Associate  
D 412 944 2137  
greg.benckart@avisonyoung.com

Avison Young - Pittsburgh | Four PPG Place, Suite 300 | Pittsburgh, PA 15222

We obtained the information above from sources we believe to be reliable. However, we have not verified its accuracy and make no guarantee, warranty or representation about it. It is submitted subject to the possibility of errors, omissions, change of price, rental or other conditions, prior sale, lease or financing, or withdrawal without notice. We include projections, opinions, assumptions or estimates for example only, and they may not represent current or future performance of the property. You and your tax and legal advisors should conduct your own investigation of the property and transaction.

2nd Floor Plan - 3,226 SF



1 2nd Floor Plan

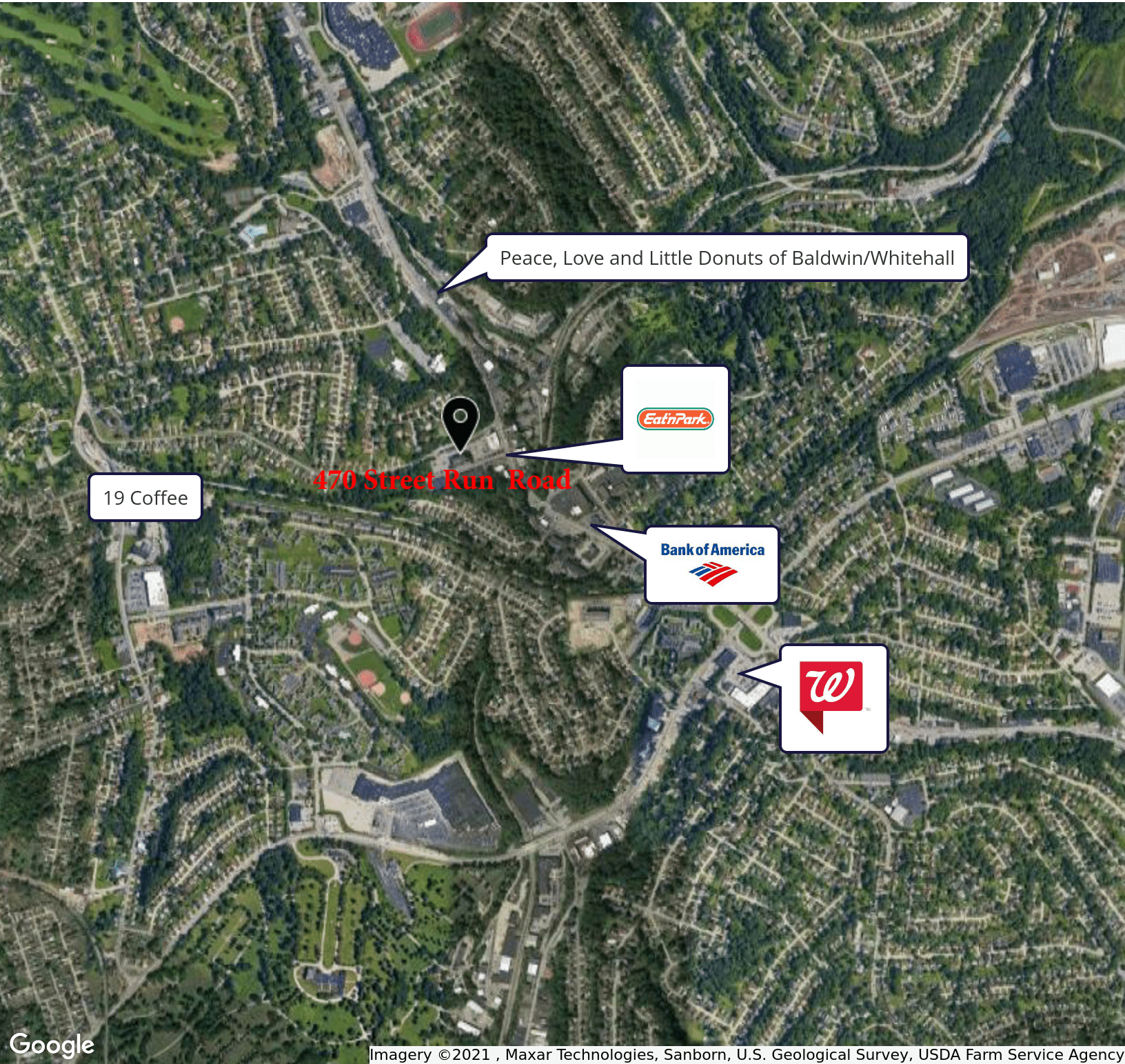


**James Kelly**  
Principal & SVP  
D 412 720 4012  
james.kelly@avisonyoung.com

**Justin Weaver**  
Associate  
D 412 944 2126  
justin.weaver@avisonyoung.com

**Greg Benckart**  
Associate  
D 412 944 2137  
greg.benckart@avisonyoung.com





**James Kelly**  
Principal & SVP  
D 412 720 4012  
james.kelly@avisonyoung.com

**Justin Weaver**  
Associate  
D 412 944 2126  
justin.weaver@avisonyoung.com

**Greg Benckart**  
Associate  
D 412 944 2137  
greg.benckart@avisonyoung.com

Avison Young - Pittsburgh | Four PPG Place, Suite 300 | Pittsburgh, PA 15222

We obtained the information above from sources we believe to be reliable. However, we have not verified its accuracy and make no guarantee, warranty or representation about it. It is submitted subject to the possibility of errors, omissions, change of price, rental or other conditions, prior sale, lease or financing, or withdrawal without notice. We include projections, opinions, assumptions or estimates for example only, and they may not represent current or future performance of the property. You and your tax and legal advisors should conduct your own investigation of the property and transaction.