



Grant - Murray
REAL ESTATE, LLC
COMMERCIAL AND INVESTMENT BROKERAGE

150 N. McPherson Church Rd
Fayetteville, NC 28303
www.grantmurrayre.com



OFFICE SPACE FOR LEASE NEAR HOSPITAL

2850 VILLAGE DR

2850 Village Dr, Fayetteville, NC 28304

for more information

PATRICK MURRAY, CCIM, CLS

Principal / Broker in Charge

O: 910.829.1617 x202

C: 910.988.5284

patrick@grantmurrayre.com



EXECUTIVE SUMMARY



OFFERING SUMMARY

Available SF: Suite 100 - 4,924 SF
 Suite 201 - 2,621 SF

Lease Rate: \$20.00/SF (Full Svc)

Lot Size: 1.86 Acres

Year Built: 1985

Building Size: 22,794 SF

Zoning: OI (HSPOD overlay)

Market: NC-Fayetteville

PROPERTY OVERVIEW

Two suites are available for lease in the office building located at 2850 Village Dr. Suite 100 is 4,924 SF with a secured reception/waiting area as you enter the suite, a large open bullpen-style office area, a large conference room, private offices, and a break room. The 2,621 square foot space is on the second floor which is serviced by an elevator. The space has a reception/waiting area, multiple private offices, a conference room, a copy room, and a break room. The \$20.00/SF rental rate is a full service rate that includes utilities, janitorial service, and maintenance.

LOCATION OVERVIEW

The office building is located along Village Dr at the intersection of Boone Trail Extension. It is easily accessible from the traffic light at this intersection. Cape Fear Valley Medical Center is nearby as well as many banks, restaurants, and other amenities.

for more information

PATRICK MURRAY, CCIM, CLS
 Principal / Broker in Charge
 O: 910.829.1617 x202
 C: 910.988.5284
 patrick@grantmurrayre.com



Grant - Murray
REAL ESTATE, LLC
COMMERCIAL AND INVESTMENT BROKERAGE

2850 Village Dr
2850 VILLAGE DR, FAYETTEVILLE, NC 28304

ADDITIONAL PHOTOS



for more information

PATRICK MURRAY, CCIM, CLS

Principal / Broker in Charge

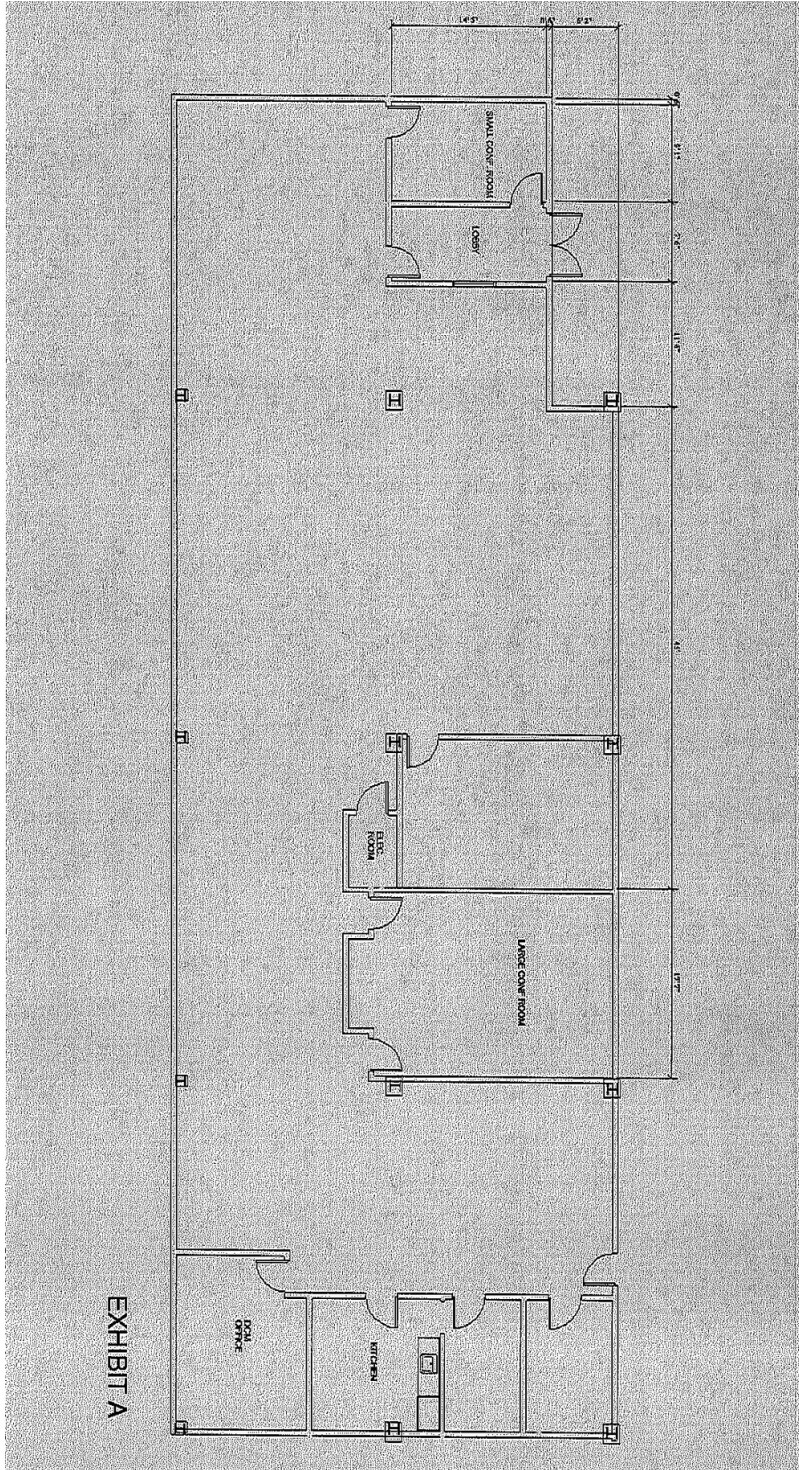
O: 910.829.1617 x202

C: 910.988.5284

patrick@grantmurrayre.com



FLOOR PLANS-SUITE 100



for more information

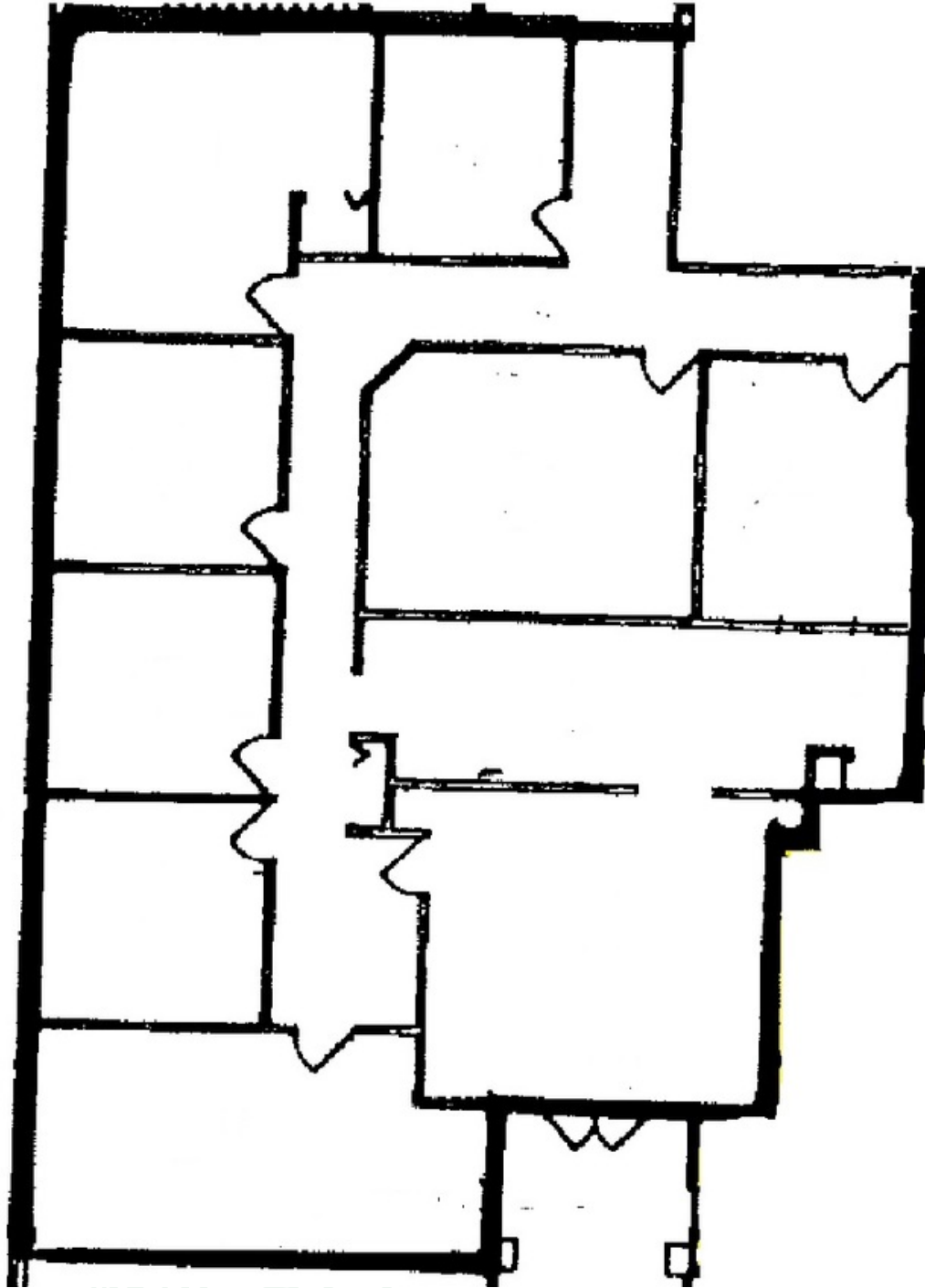
PATRICK MURRAY, CCIM, CLS

Principal / Broker in Charge

O: 910.829.1617 x202

C: 910.988.5284

patrick@grantmurrayre.com



for more information

PATRICK MURRAY, CCIM, CLS

Principal / Broker in Charge

O: 910.829.1617 x202

C: 910.988.5284

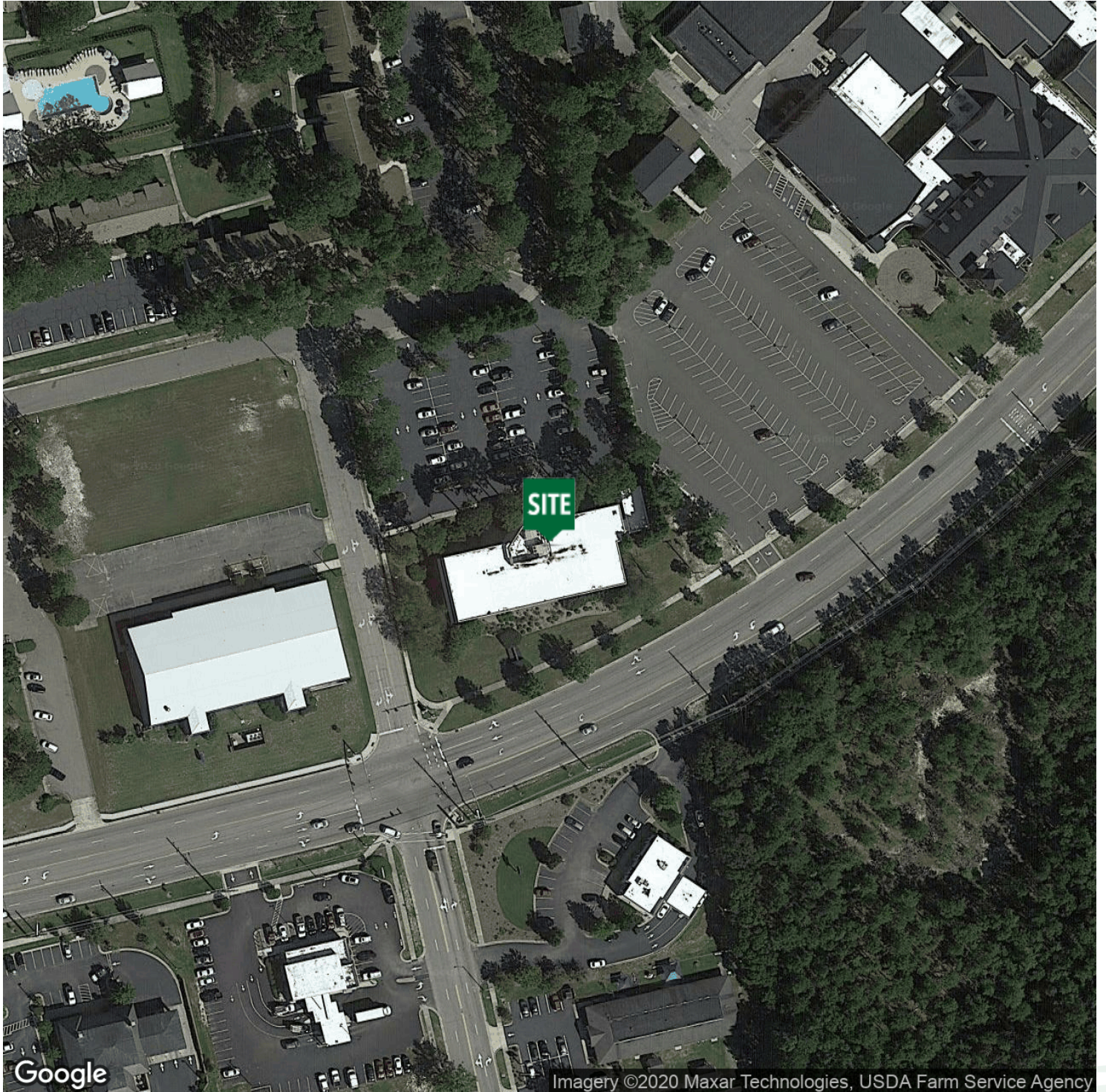
patrick@grantmurrayre.com



Grant - Murray
REAL ESTATE, LLC
COMMERCIAL AND INVESTMENT BROKERAGE

2850 Village Dr
2850 VILLAGE DR, FAYETTEVILLE, NC 28304

AERIAL MAPS



for more information

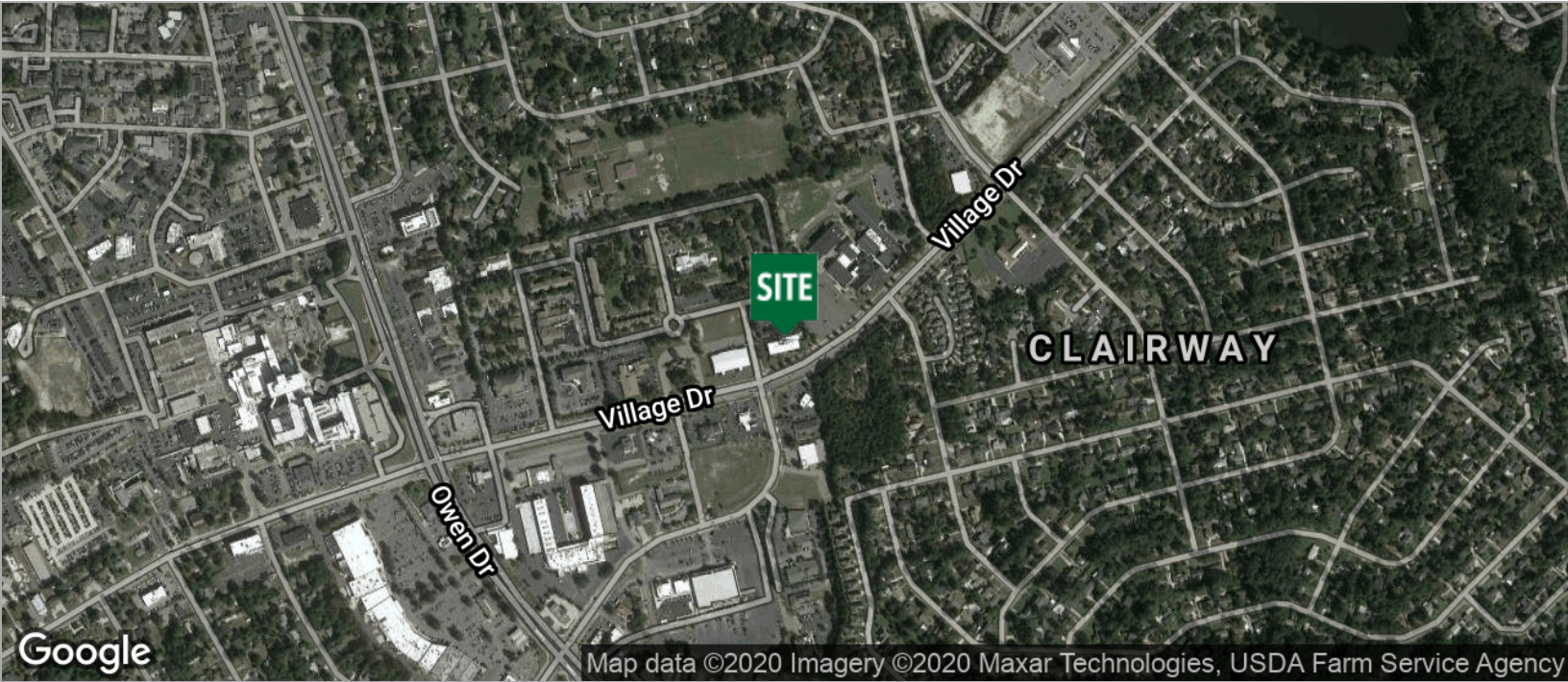
PATRICK MURRAY, CCIM, CLS

Principal / Broker in Charge

O: 910.829.1617 x202

C: 910.988.5284

patrick@grantmurrayre.com



for more information

PATRICK MURRAY, CCIM, CLS
Principal / Broker in Charge
O: 910.829.1617 x202
C: 910.988.5284
patrick@grantmurrayre.com