



## Dogwood View Parkway

Dogwood View Parkway, Jackson, Mississippi 39213

### Property Features

- 6.15 AC
- Located off of I-220 Corridor
- Professional Development Area



For more information:

**Micah McCullough, CCIM, SIOR**

601 981 6800 x301 • micah@ucrproperties.com

NO WARRANTY OR REPRESENTATION, EXPRESS OR IMPLIED, IS MADE AS TO THE ACCURACY OF THE INFORMATION CONTAINED HEREIN, AND THE SAME IS SUBMITTED SUBJECT TO ERRORS, OMISSIONS, CHANGE OF PRICE, RENTAL OR OTHER CONDITIONS, PRIOR SALE, LEASE OR FINANCING, OR WITHDRAWAL WITHOUT NOTICE, AND OF ANY SPECIAL LISTING CONDITIONS IMPOSED BY OUR PRINCIPALS NO WARRANTIES OR REPRESENTATIONS ARE MADE AS TO THE CONDITION OF THE PROPERTY OR ANY HAZARDS CONTAINED THEREIN ARE ANY TO BE IMPLIED.

NAI UCR Properties

660 Katherine Drive, Flowood, MS 39232

601 981 6800

[ucrproperties.com](http://ucrproperties.com)

# Executive Summary

For Sale

## Dogwood View Land



### Property Summary

Sale Price: \$300,000

Lot Size: 6.15 Acres

APN #:

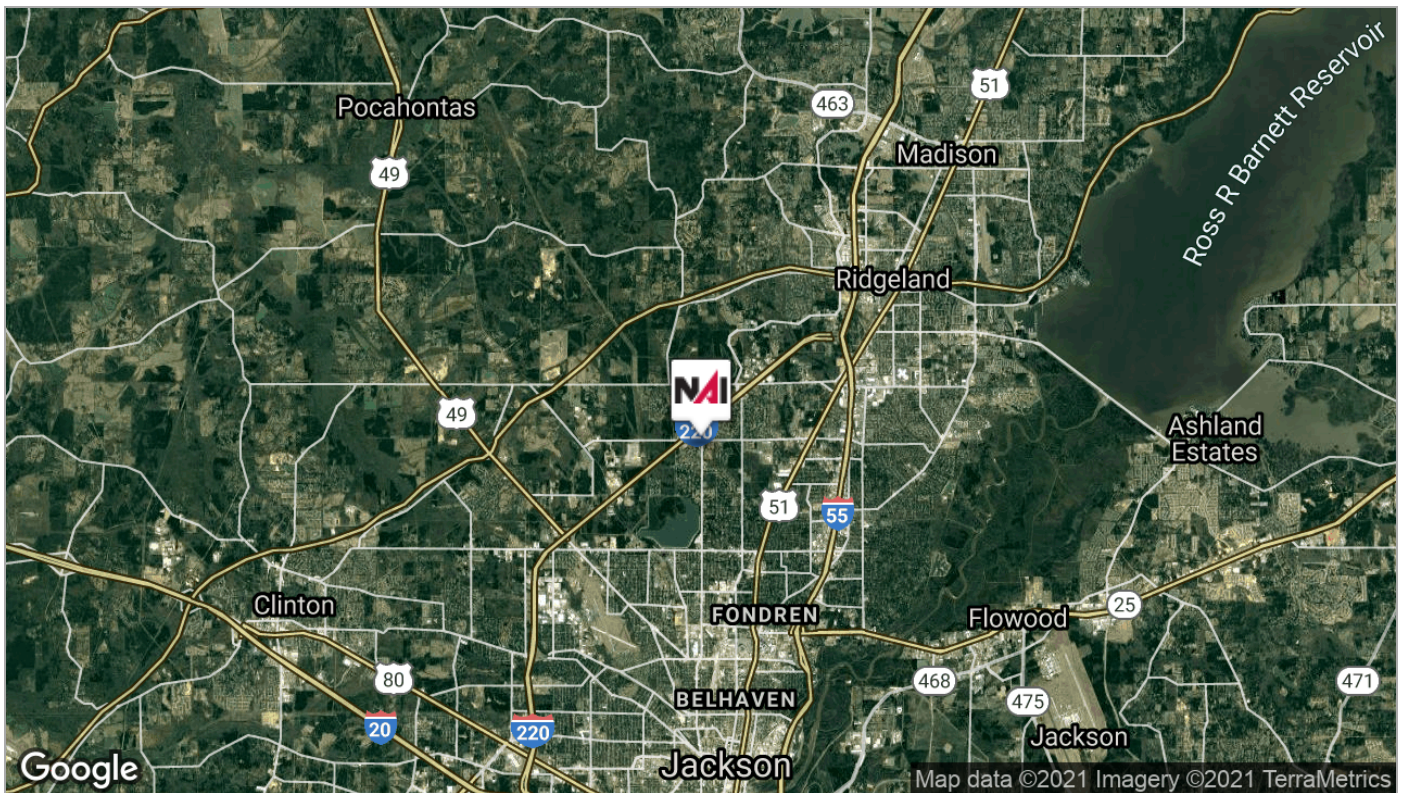
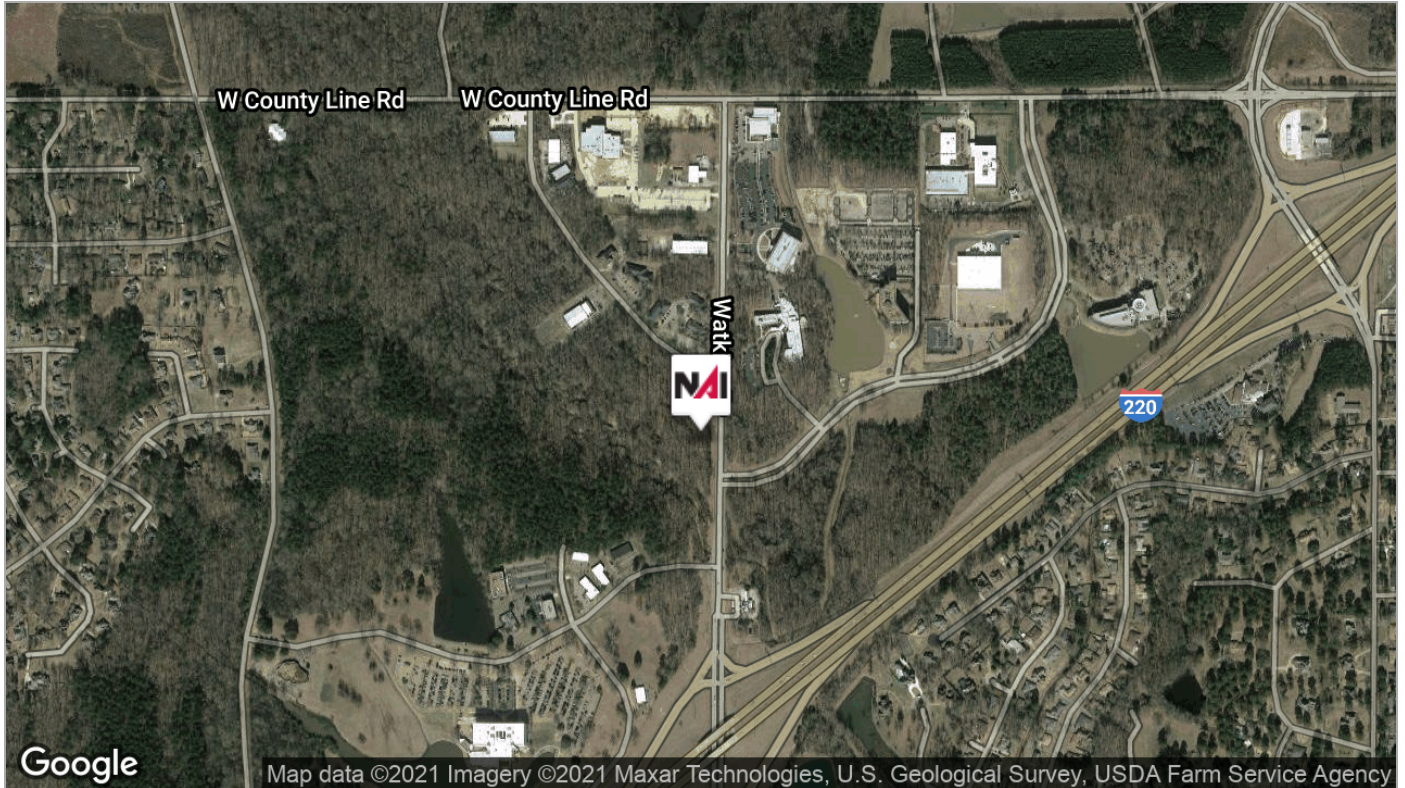
Zoning: C-2 LIMITED  
COMMERCIAL

### Property Overview

This property is 6.15 acres located immediately off of I-220 and surrounded by many professional office users.

### Location Overview

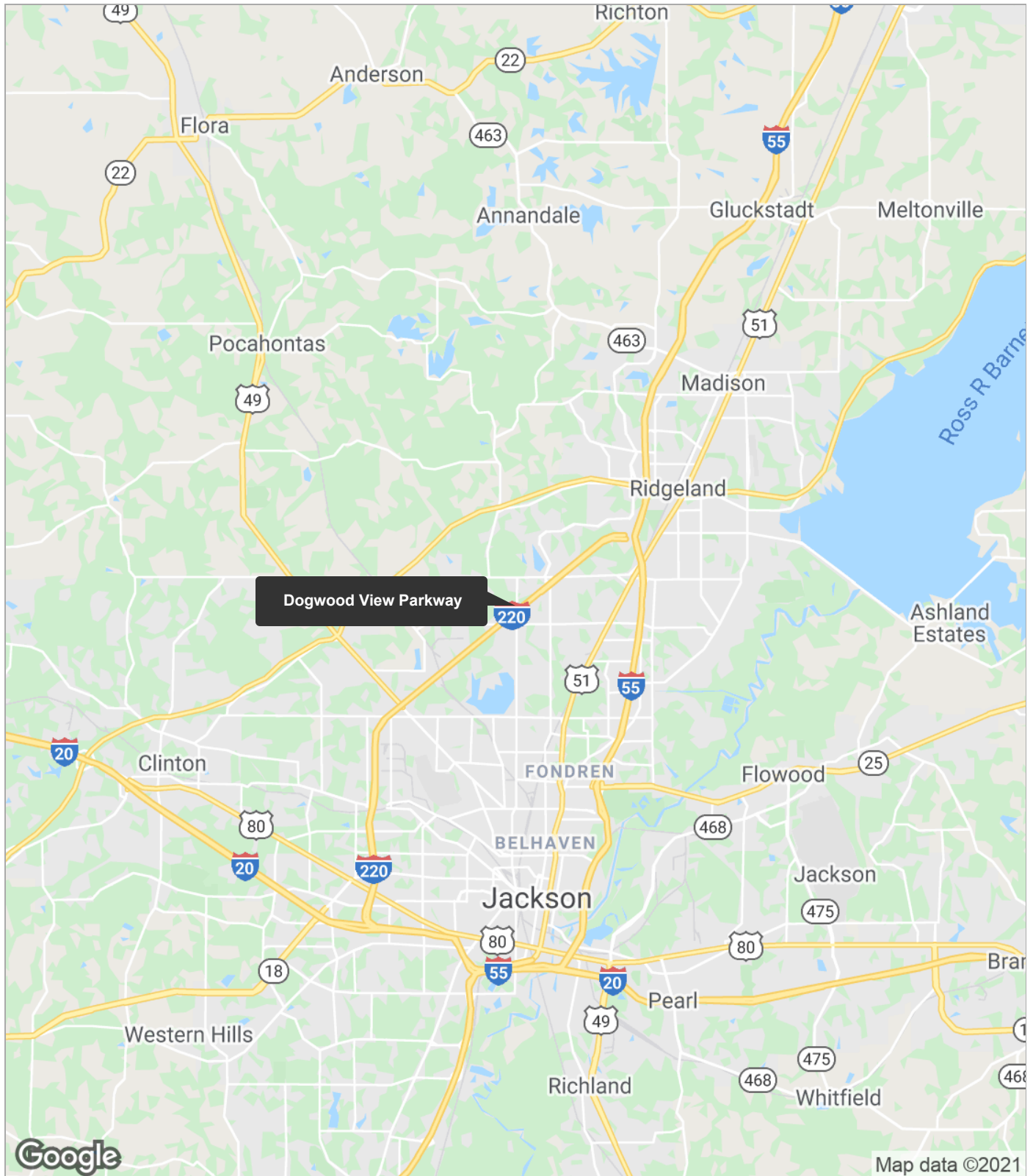
This property is conveniently located within the Lakeover Development at the southwest corner of Watkins Drive and Dogwood View Parkway, just off of I-220 corridor. Located directly across the street from the Garden Offices, a 3 building office complex with a professional tenant mix comprised of engineers, attorneys, financial services and more. Located near Southern Farm Bureau and Entergy.



# Regional Map

For Sale

# Dogwood View Land



# Aerial Map

For Sale

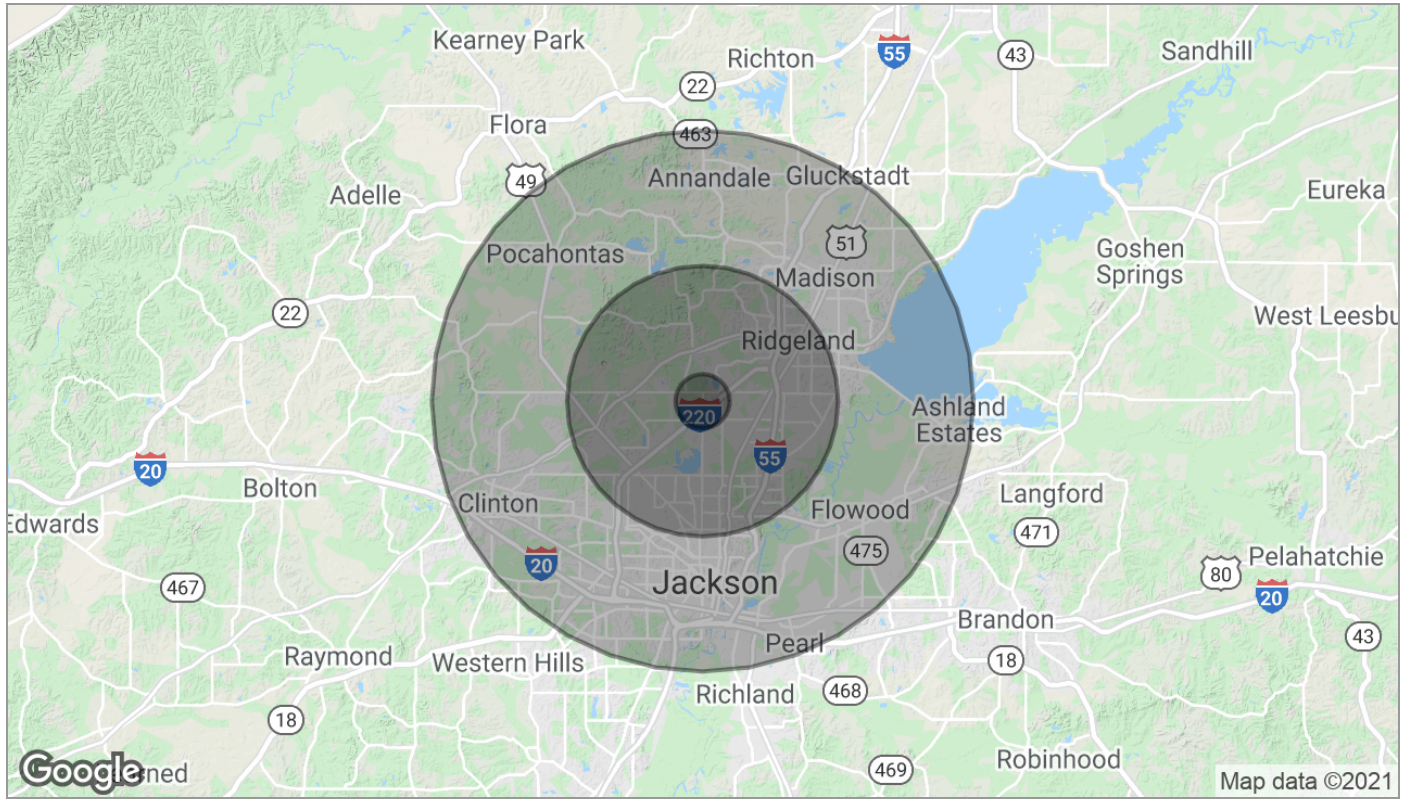
# Dogwood View Land



# Demographics Map

For Sale

# Dogwood View Land



<b>Population</b>	<b>1 Mile</b>	<b>5 Miles</b>	<b>10 Miles</b>
TOTAL POPULATION	2,588	86,447	271,107
MEDIAN AGE	42.8	35.6	33.5
MEDIAN AGE (MALE)	46.6	34.2	32.1
MEDIAN AGE (FEMALE)	39.7	36.8	34.6
<b>Households &amp; Income</b>	<b>1 Mile</b>	<b>5 Miles</b>	<b>10 Miles</b>
TOTAL HOUSEHOLDS	969	32,946	101,617
# OF PERSONS PER HH	2.7	2.6	2.7
AVERAGE HH INCOME	\$68,654	\$60,706	\$62,434
AVERAGE HOUSE VALUE	\$159,417	\$177,472	\$181,333
<b>Race</b>	<b>1 Mile</b>	<b>5 Miles</b>	<b>10 Miles</b>
% WHITE	10.2%	27.2%	38.5%
% BLACK	89.2%	70.5%	58.5%
% ASIAN	0.0%	0.7%	1.3%
% HAWAIIAN	0.0%	0.0%	0.0%
% INDIAN	0.0%	0.1%	0.1%
% OTHER	0.2%	1.2%	1.0%
<b>Ethnicity</b>	<b>1 Mile</b>	<b>5 Miles</b>	<b>10 Miles</b>
% HISPANIC	0.2%	2.5%	2.2%

\* Demographic data derived from 2010 US Census